

United States Department of Agriculture (USDA)
Agricultural Marketing Service (AMS)



**Market Analysis & Reporting Services (MARS)
API & Livestock Mandatory Price Reporting in
Microsoft Excel
User Guide, v1.1**

U.S. Department of Agriculture
Agricultural Marketing Service
1400 Independence Avenue SW
Washington DC 20250

April 2018

Table of Contents

1	MARS To Excel Overview	4
1.1	Purpose of MARS API to Excel Help Guide	4
1.2	Document Audience	4
2	Usage	4
2.1	Starting a new MARS API request	4
2.2	Pulling a specific report from the MARS API	12
3	Livestock Mandatory Price Reporting System Web Service to Excel	21
3.1	Overview	21
3.2	Implementation	21

Change History

Date	Change	Version
11 APR 18	Initial Draft	1.0
17 APR 18	Added Livestock Mandatory Price Reporting Web Service to Excel Section	1.1

1 MARS To Excel Overview

This overview provides instructions to basic Excel users on how to connect to the Market Analysis & Reporting Services (MARS) Application Programming Interface (API) and access the desired data. This document goes step by step.

1.1 Purpose of MARS API to Excel Help Guide

Both Microsoft Excel 2016, and 2013 (with the optional Power Query Tab installed) support data calls to web based API. The Microsoft 2013 Power Query Tab can be downloaded [here](https://www.microsoft.com/en-us/download/details.aspx?id=39379)¹. In Excel 2016, the Tab is called “Data”. These instructions show how to link data sources to the MARS API from Excel file and automatically refresh to pull the latest data.

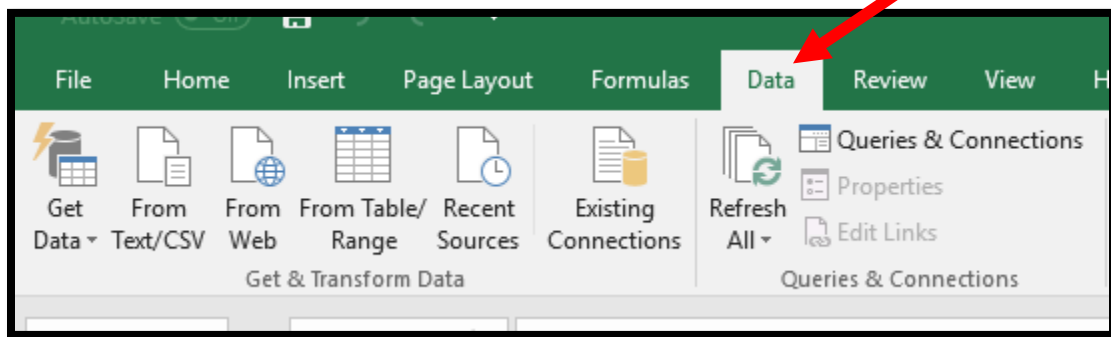


Figure 1 MS Excel Data Tab Toolbar

1.2 Document Audience

This overview was written to assist basic Excel users in configuring their Microsoft Excel 2013 or 2016 to pull MARS data automatically into their own environment or network.

2 Usage

In order to know specifically what reports are available, it is recommended that a Table of Contents be pulled from the MARS API before beginning your query.

2.1 Starting a new MARS API request

To start a new MARS API connection, click “From Web” on the Data Tab in Excel.

¹ <https://www.microsoft.com/en-us/download/details.aspx?id=39379>

Enter the following URL to retrieve the table of contents from the MARS API:
<https://marsapi.ams.usda.gov/services/v1/reports>. Click “OK”. The screen will pause for a few seconds while the request is made to the MARS API. The screen will refresh.

Figure 2 “From Web” Menu.

The first time a Data Source is configured to access the MAR API, a key is required.

Select the Data Tab >> Queries and Connections >> Right click on one of the queries displayed in the right pane and select >> Edit. Once in the Query Editor, select Data Source Settings >> Select Global permission. Select Edit Permission >> Select Basic >> Select Edit.

Figure 3 Access Web Content Form

Select the “Basic” Tab and enter the MARS API key that is associated with your E-Auth account into the User name field. Each registered user has a personal API key that can be found at [My Market News](https://mymarketnews.ams.usda.gov)² in the user profile. Click “Connect”. The API key specified should be entered in

² <https://mymarketnews.ams.usda.gov>

the username field of the Basic authorization with no password. Select “Connect” when finished.

The page will refresh and the Query Editor will launch.

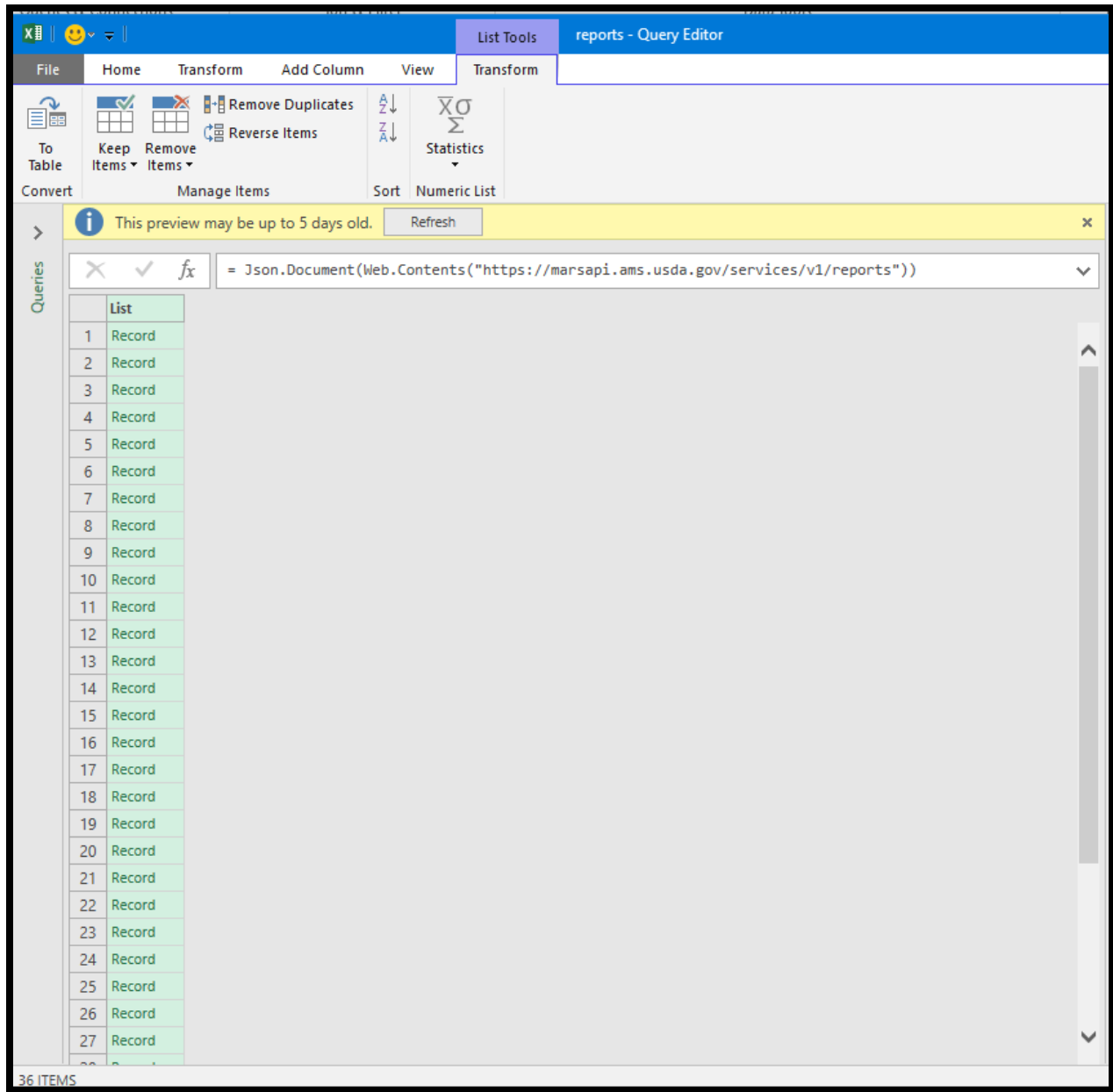


Figure 4 Microsoft Query Editor

Place your mouse on the column heading titled “List”. Right click your mouse and select “Copy Entire List”

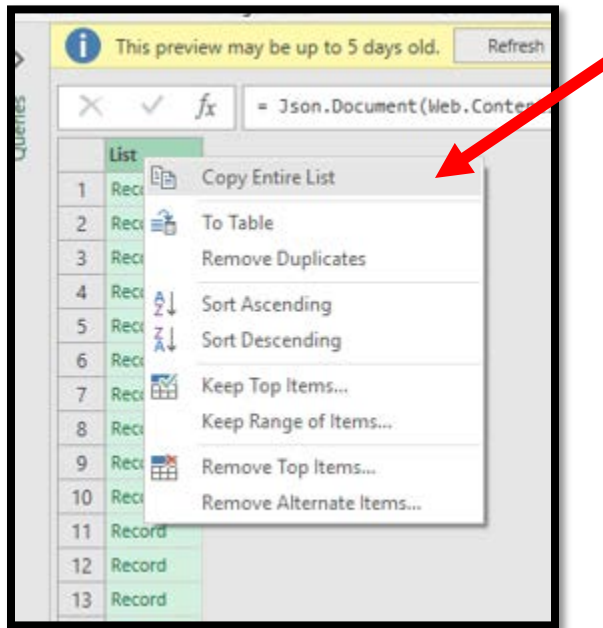


Figure 5 Click Copy Entire List

Click the “To Table” button

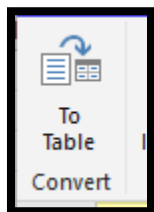


Figure 6 Click To Table Convert

A menu will appear. Click “OK”

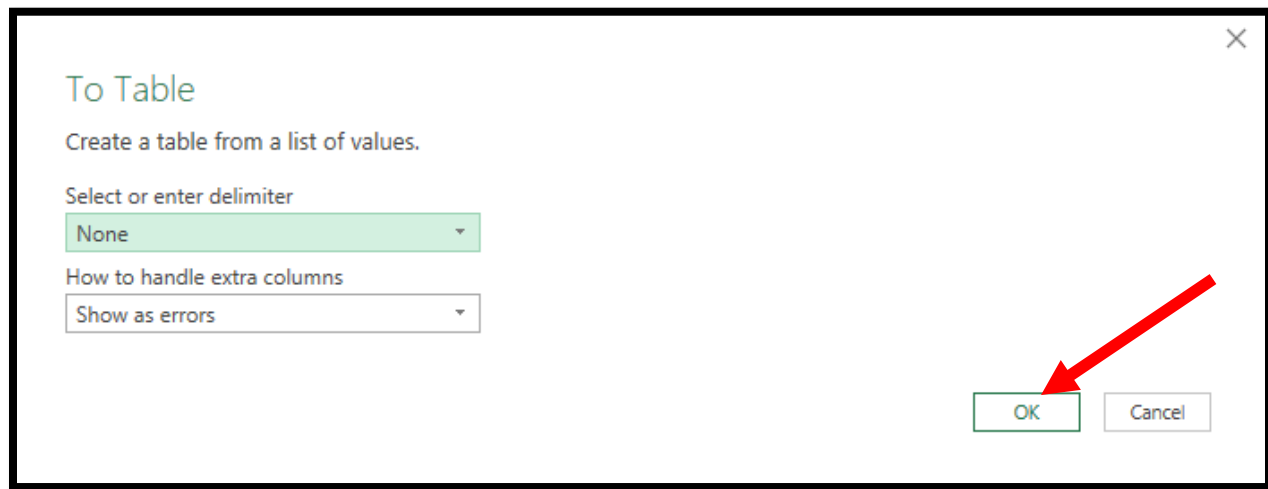


Figure 7 To Table Selection Menu

The screen will refresh. There will be an icon to the right of “Column1”.

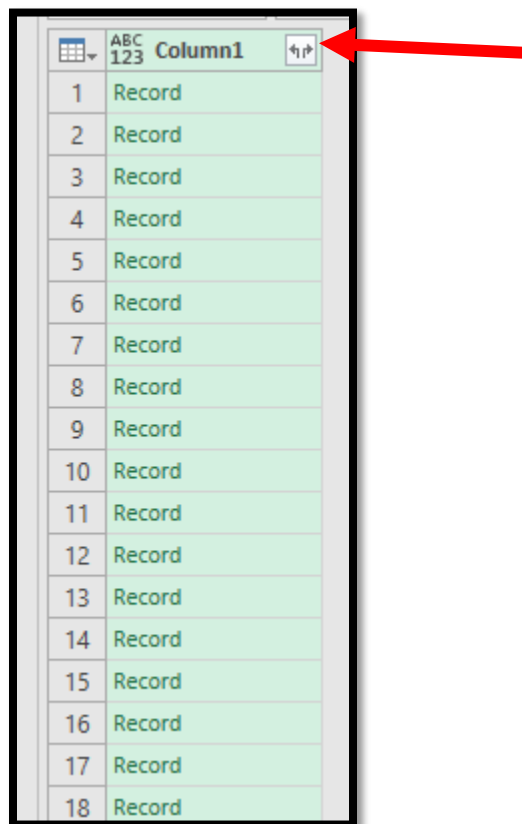


Figure 8 Column Selection

Click the “Double Arrow” icon. The screen will refresh. Click “OK”.

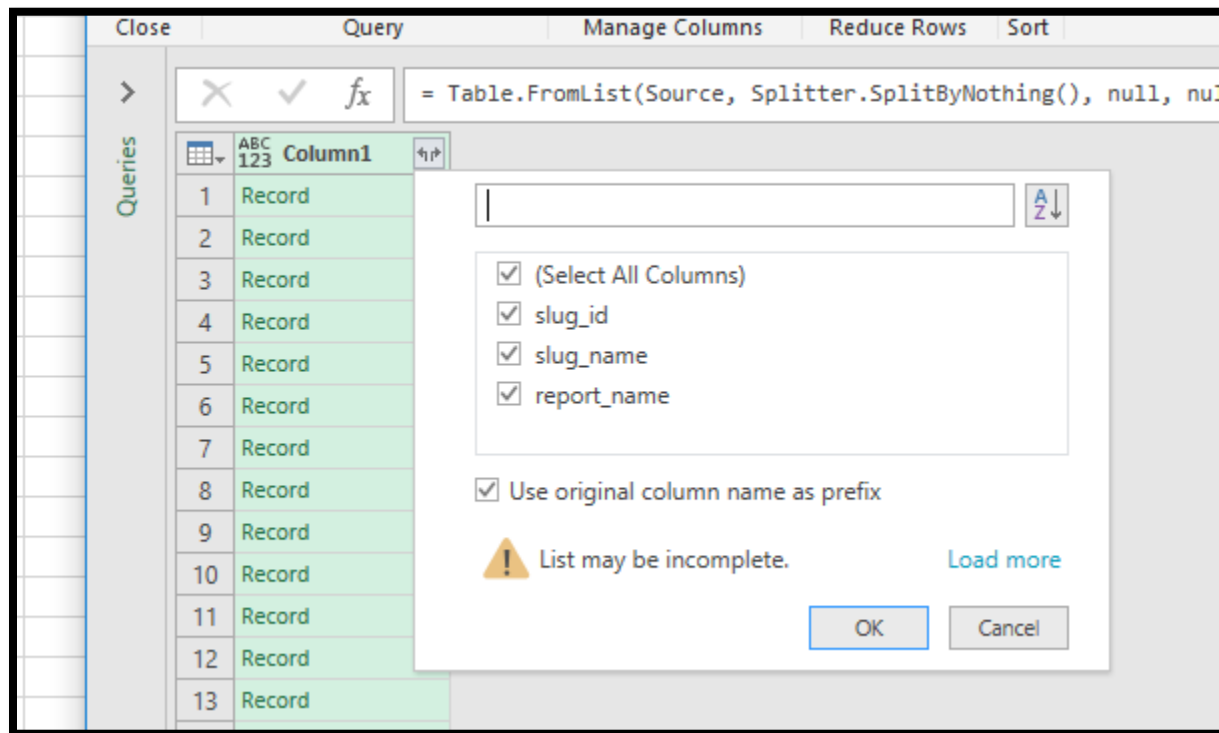
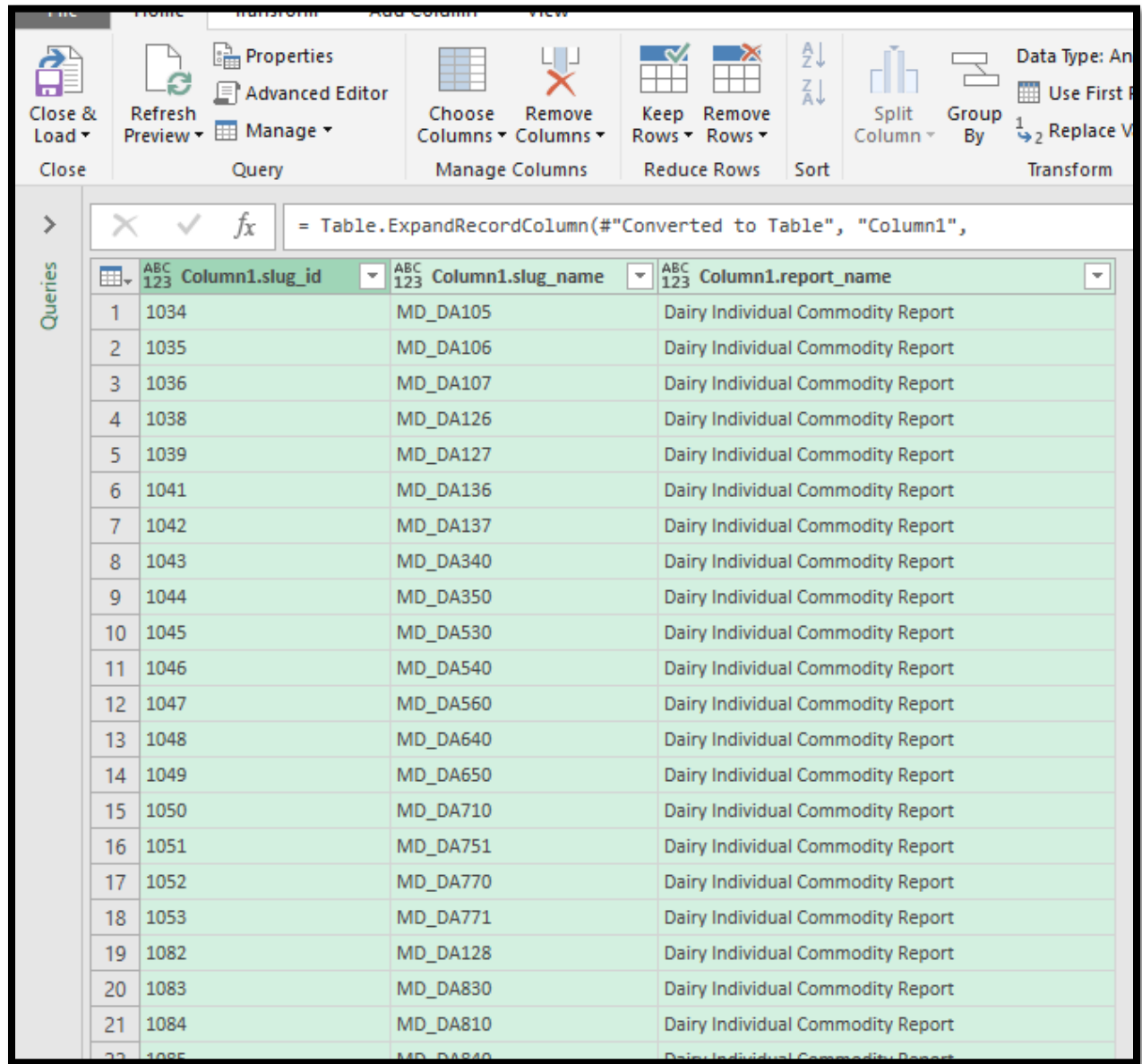


Figure 9 Column Selection Options

The screen will refresh again and show the following:



	Column1.slug_id	Column1.slug_name	Column1.report_name
1	1034	MD_DA105	Dairy Individual Commodity Report
2	1035	MD_DA106	Dairy Individual Commodity Report
3	1036	MD_DA107	Dairy Individual Commodity Report
4	1038	MD_DA126	Dairy Individual Commodity Report
5	1039	MD_DA127	Dairy Individual Commodity Report
6	1041	MD_DA136	Dairy Individual Commodity Report
7	1042	MD_DA137	Dairy Individual Commodity Report
8	1043	MD_DA340	Dairy Individual Commodity Report
9	1044	MD_DA350	Dairy Individual Commodity Report
10	1045	MD_DA530	Dairy Individual Commodity Report
11	1046	MD_DA540	Dairy Individual Commodity Report
12	1047	MD_DA560	Dairy Individual Commodity Report
13	1048	MD_DA640	Dairy Individual Commodity Report
14	1049	MD_DA650	Dairy Individual Commodity Report
15	1050	MD_DA710	Dairy Individual Commodity Report
16	1051	MD_DA751	Dairy Individual Commodity Report
17	1052	MD_DA770	Dairy Individual Commodity Report
18	1053	MD_DA771	Dairy Individual Commodity Report
19	1082	MD_DA128	Dairy Individual Commodity Report
20	1083	MD_DA830	Dairy Individual Commodity Report
21	1084	MD_DA810	Dairy Individual Commodity Report
22	1085	MD_DA810	Dairy Individual Commodity Report

Figure 10 All Columns Shown

Click the “Close and Load” button. This will load all data into a new Excel worksheet.

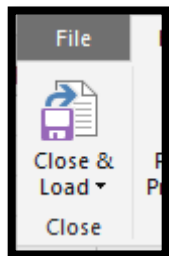
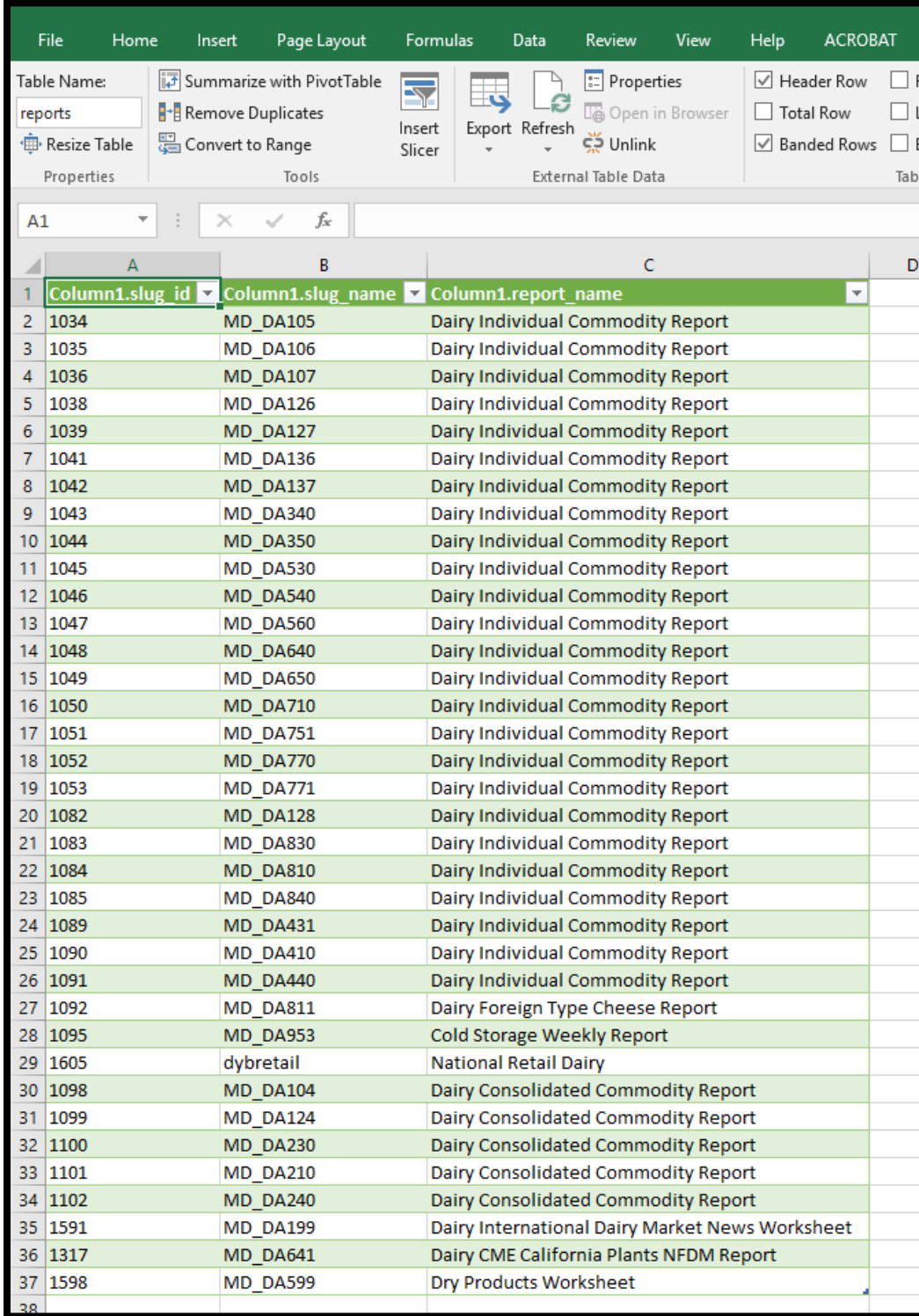


Figure 11 Close and Load Button

The worksheet will pause for a few second while the data is pulled from the MARS API. The screen will refresh and look like:



	A	B	C	D
1	Column1.slug_id	Column1.slug_name	Column1.report_name	
2	1034	MD_DA105	Dairy Individual Commodity Report	
3	1035	MD_DA106	Dairy Individual Commodity Report	
4	1036	MD_DA107	Dairy Individual Commodity Report	
5	1038	MD_DA126	Dairy Individual Commodity Report	
6	1039	MD_DA127	Dairy Individual Commodity Report	
7	1041	MD_DA136	Dairy Individual Commodity Report	
8	1042	MD_DA137	Dairy Individual Commodity Report	
9	1043	MD_DA340	Dairy Individual Commodity Report	
10	1044	MD_DA350	Dairy Individual Commodity Report	
11	1045	MD_DA530	Dairy Individual Commodity Report	
12	1046	MD_DA540	Dairy Individual Commodity Report	
13	1047	MD_DA560	Dairy Individual Commodity Report	
14	1048	MD_DA640	Dairy Individual Commodity Report	
15	1049	MD_DA650	Dairy Individual Commodity Report	
16	1050	MD_DA710	Dairy Individual Commodity Report	
17	1051	MD_DA751	Dairy Individual Commodity Report	
18	1052	MD_DA770	Dairy Individual Commodity Report	
19	1053	MD_DA771	Dairy Individual Commodity Report	
20	1082	MD_DA128	Dairy Individual Commodity Report	
21	1083	MD_DA830	Dairy Individual Commodity Report	
22	1084	MD_DA810	Dairy Individual Commodity Report	
23	1085	MD_DA840	Dairy Individual Commodity Report	
24	1089	MD_DA431	Dairy Individual Commodity Report	
25	1090	MD_DA410	Dairy Individual Commodity Report	
26	1091	MD_DA440	Dairy Individual Commodity Report	
27	1092	MD_DA811	Dairy Foreign Type Cheese Report	
28	1095	MD_DA953	Cold Storage Weekly Report	
29	1605	dybretail	National Retail Dairy	
30	1098	MD_DA104	Dairy Consolidated Commodity Report	
31	1099	MD_DA124	Dairy Consolidated Commodity Report	
32	1100	MD_DA230	Dairy Consolidated Commodity Report	
33	1101	MD_DA210	Dairy Consolidated Commodity Report	
34	1102	MD_DA240	Dairy Consolidated Commodity Report	
35	1591	MD_DA199	Dairy International Dairy Market News Worksheet	
36	1317	MD_DA641	Dairy CME California Plants NFDM Report	
37	1598	MD_DA599	Dry Products Worksheet	
38				

Figure 12 Columns of Data Shown In Excel Worksheet

Now that we have a complete list of all available reports, you can now pull a specific report. Let's go ahead and pull the "Cold Storage Weekly Report".

2.2 Pulling a specific report from the MARS API

Click on a new Worksheet in the Excel file. Click "From Web" on the Data Tab. Using the [example³](https://mymarketnews.ams.usda.gov/mars-api/reports) on the MyMarketNews website, we will use this string (<https://marsapi.ams.usda.gov/services/v1/reports/1095>). The 1095 is Slug ID for the Cold Storage Weekly Report. If you wish to pull a different report, replace the Slug ID with the desired report number. Click "OK".

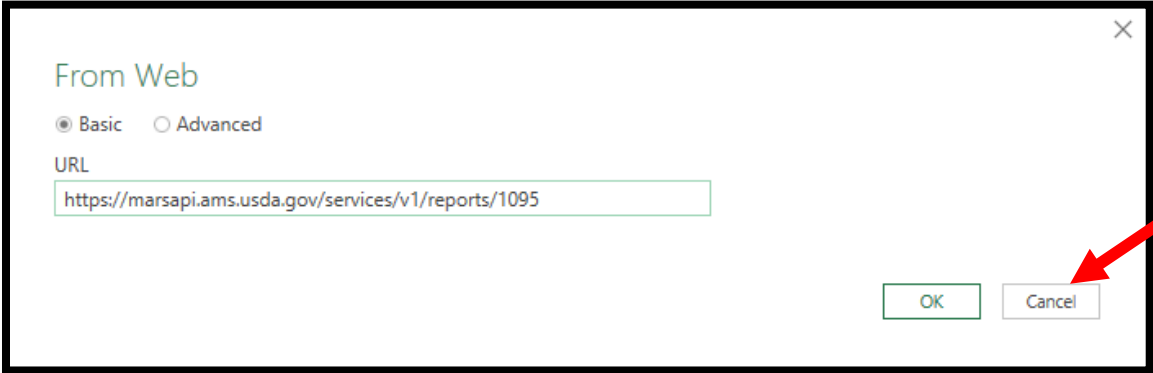
The image shows a screenshot of the 'From Web' dialog box in Microsoft Excel. The dialog has a title bar with a close button (X). Inside, the title 'From Web' is displayed. Below it are two radio buttons: 'Basic' (selected) and 'Advanced'. A text field labeled 'URL' contains the text 'https://marsapi.ams.usda.gov/services/v1/reports/1095'. At the bottom right, there are two buttons: 'OK' and 'Cancel'. A red arrow points to the 'Cancel' button.

Figure 13 From Web Input Form

This screen will show, while all the data is pulled:

The image shows a screenshot of the 'Connecting' status menu in Microsoft Excel. The dialog has a title bar with a close button (X). Inside, the title 'Connecting' is displayed. Below it is a loading spinner icon followed by the text 'Please wait while we establish a connection to https://marsapi.ams.usda.gov/services/v1/reports/1095.' At the bottom right, there is a 'Cancel' button.

Figure 14 Connecting Status Menu

³ <https://mymarketnews.ams.usda.gov/mars-api/reports>

The Query Editor menu will display:

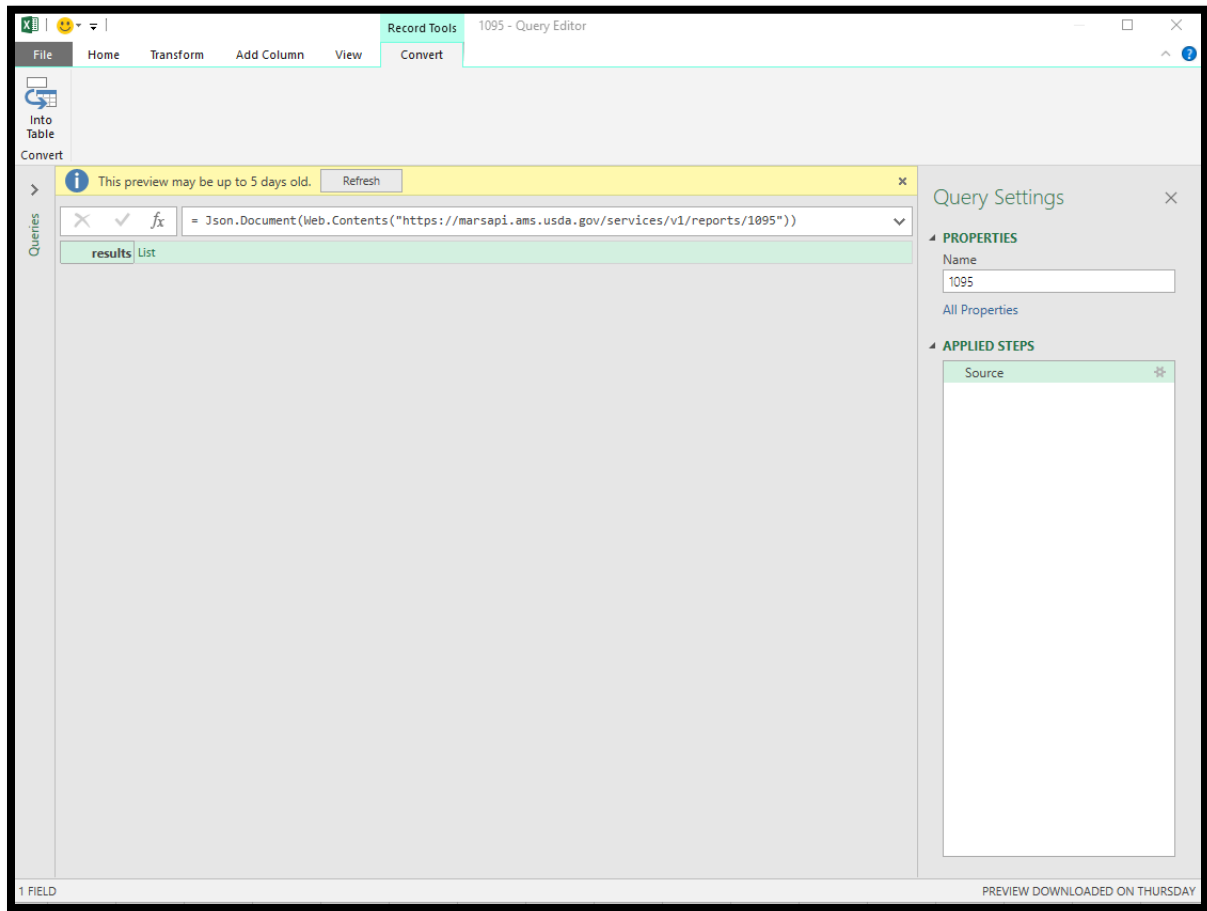


Figure 15 Microsoft Query Editor Displayed

Place your mouse on the column titled “List” in green and right click. Select “Drill Down”.

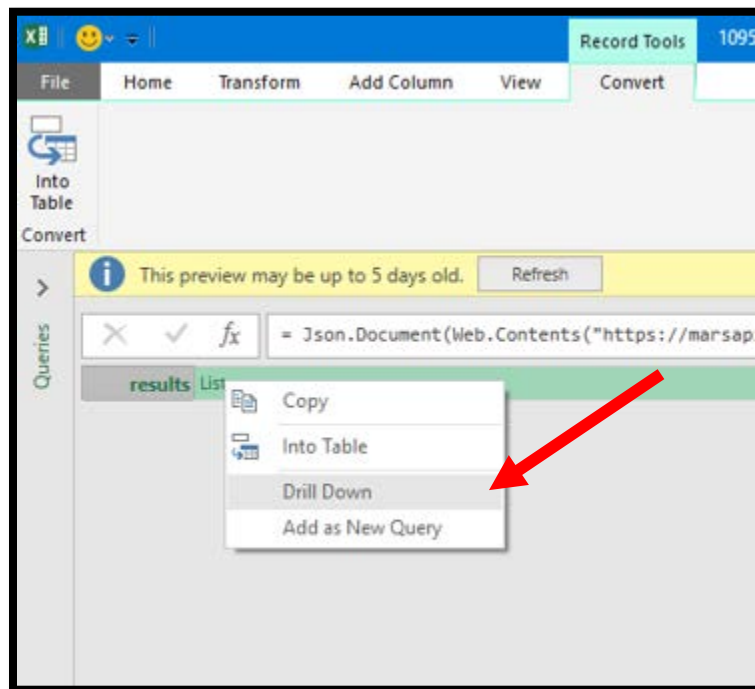


Figure 16 Selection of Drill Down

The screen will refresh and display as below.

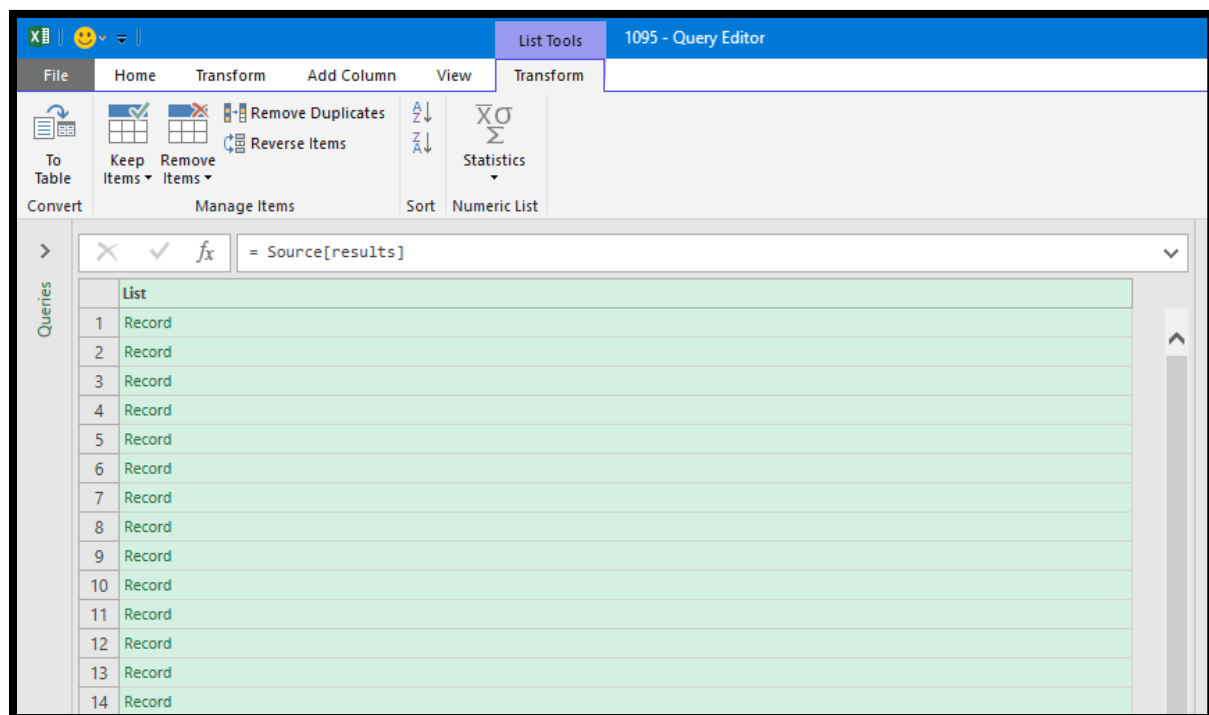


Figure 17 Transform Tab of Query Editor

Right click your mouse over the Column titled “List” and select “Copy Entire List”

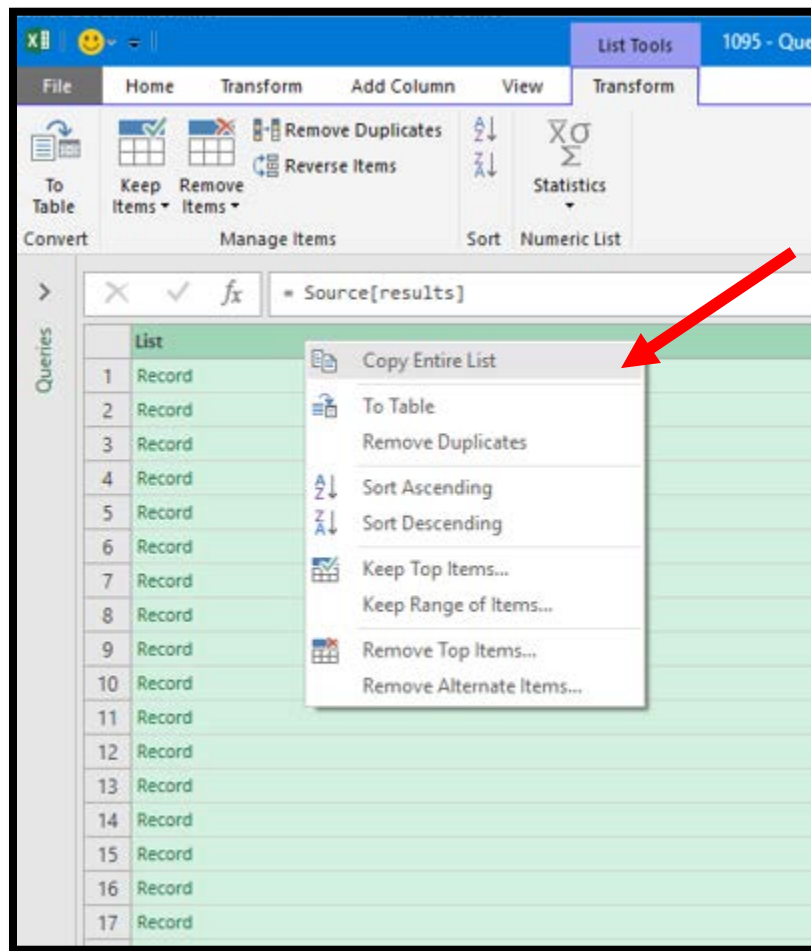


Figure 18 Transform Tab "Copy Entire List" Option

Click the “To Table” button

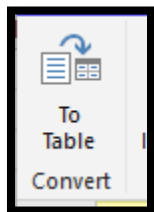


Figure 19 To Table Convert Button

A menu will appear. Click “OK”

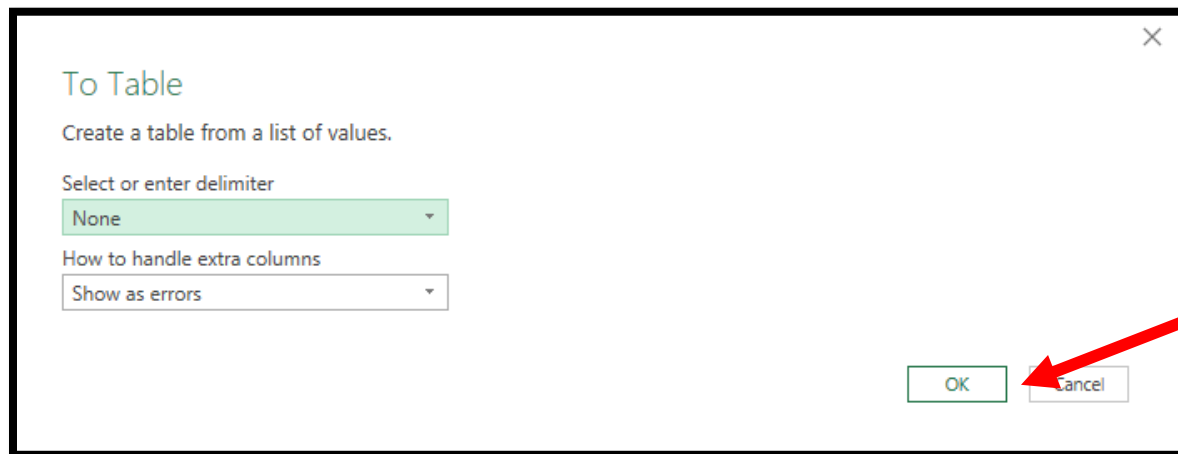


Figure 20 "To Table" Menu

The screen will refresh and display as below.

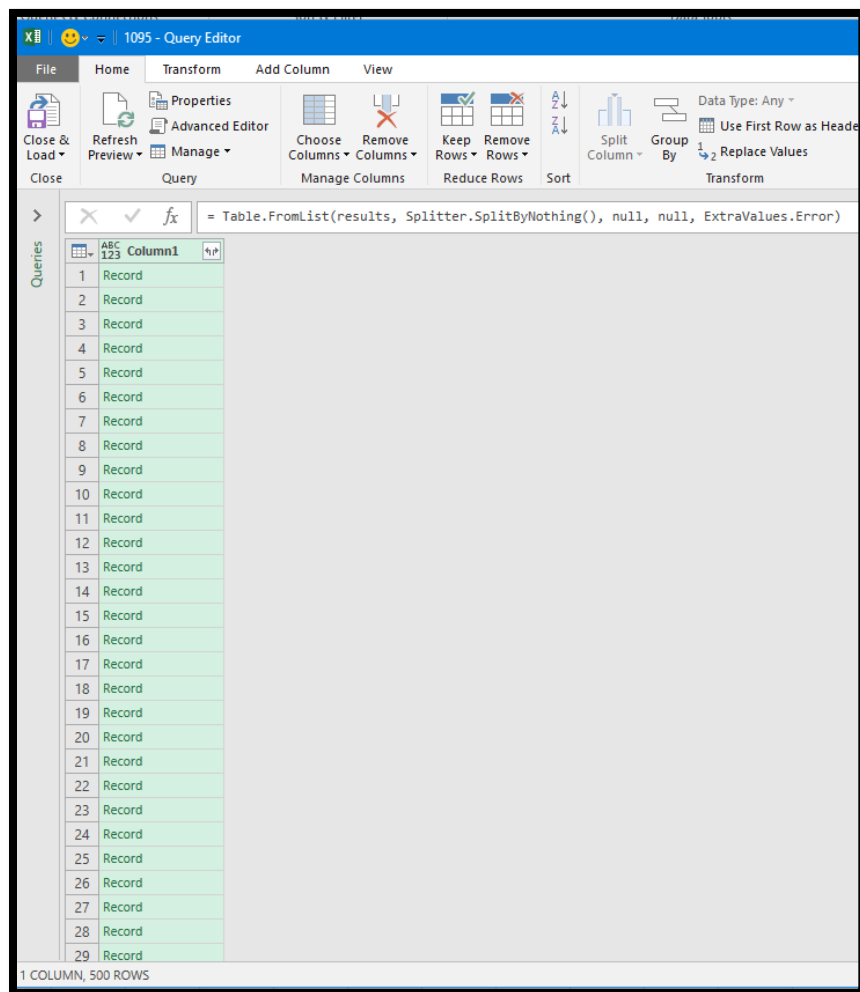
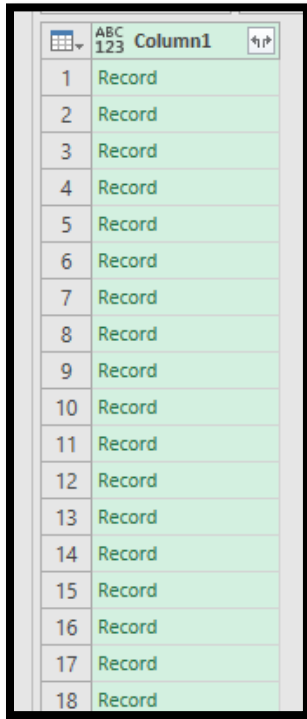


Figure 21 Query Editor with data shown

The screen will refresh. There will be an icon to the right of “Column1”. Click the “Double Arrow” icon. The screen will refresh. Click “OK”.



	Column1
1	Record
2	Record
3	Record
4	Record
5	Record
6	Record
7	Record
8	Record
9	Record
10	Record
11	Record
12	Record
13	Record
14	Record
15	Record
16	Record
17	Record
18	Record

Figure 22 Click Double Arrow to expand

The screen will refresh and show. Click “OK”. If you want to exclude columns from importing, de-select the columns here and click “OK”

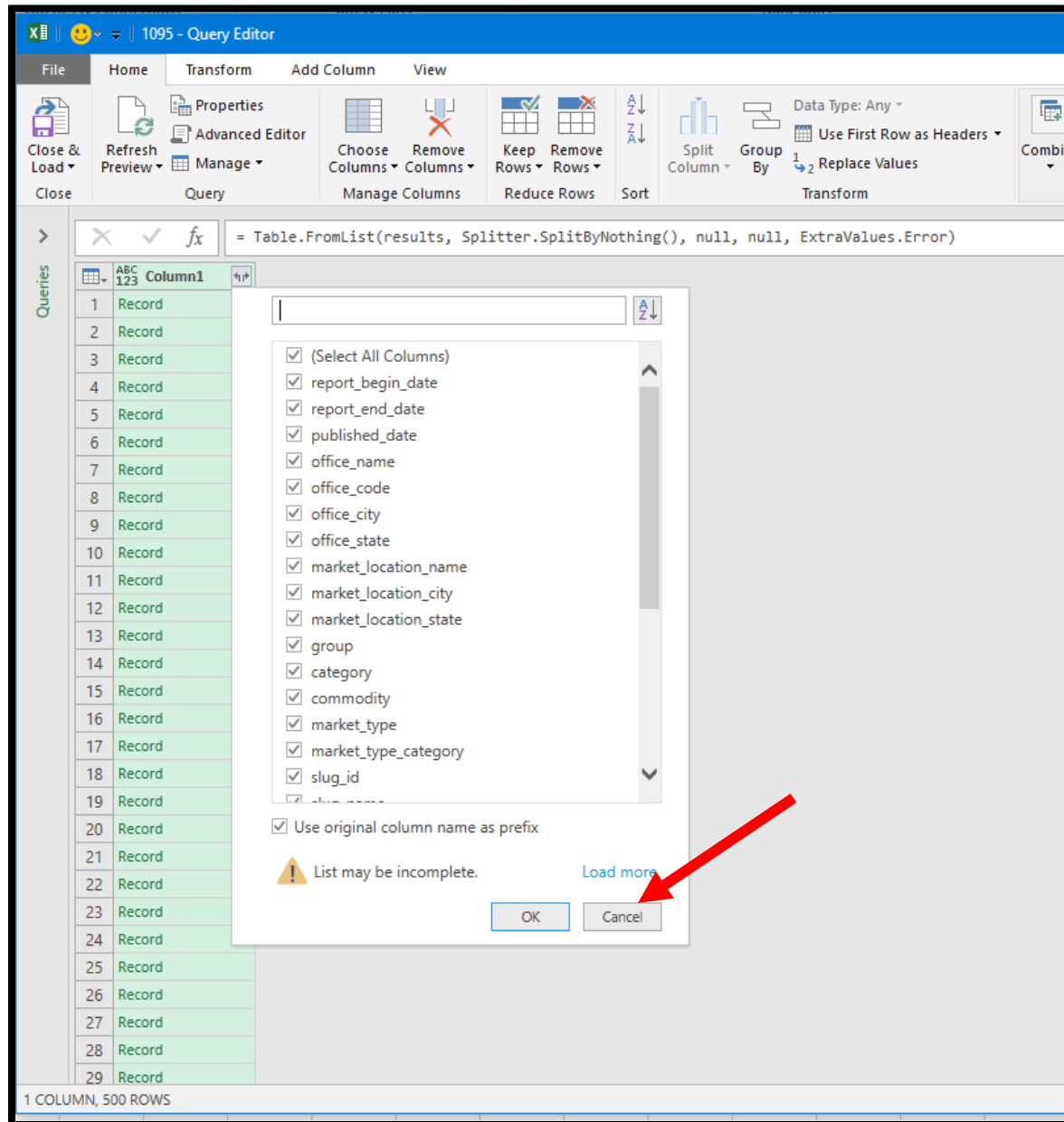


Figure 23 Column Selection Menu

The screen will refresh and appear like this.

1095 - Query Editor

File Home Transform Add Column View

Close & Load Close Refresh Preview Properties Advanced Editor Manage Query Choose Columns Remove Columns Keep Rows Remove Rows Sort Split Column Group By Data Type: Any Use First Row as Headers Replace Values Combine Manage Parameters

Queries

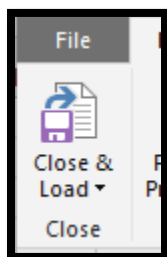
Column1.report_begin_date Column1.report_end_date Column1.published_date Column1.office_name

	Column1.report_begin_date	Column1.report_end_date	Column1.published_date	Column1.office_name
1	2018-04-02	2018-04-02	2018-04-04	Madison
2	2018-04-02	2018-04-02	2018-04-04	Madison
3	2018-03-26	2018-03-26	2018-03-28	Madison
4	2018-03-26	2018-03-26	2018-03-28	Madison
5	2018-03-19	2018-03-19	2018-03-21	Madison
6	2018-03-19	2018-03-19	2018-03-21	Madison
7	2018-03-12	2018-03-12	2018-03-14	Madison
8	2018-03-12	2018-03-12	2018-03-14	Madison
9	2018-03-05	2018-03-05	2018-03-07	Madison
10	2018-03-05	2018-03-05	2018-03-07	Madison
11	2018-02-26	2018-02-26	2018-02-28	Madison
12	2018-02-26	2018-02-26	2018-02-28	Madison
13	2018-02-19	2018-02-19	2018-02-21	Madison
14	2018-02-19	2018-02-19	2018-02-21	Madison
15	2018-01-29	2018-01-29	2018-02-07	Madison
16	2018-01-29	2018-01-29	2018-02-07	Madison
17	2018-01-29	2018-01-29	2018-02-07	Madison
18	2018-01-29	2018-01-29	2018-02-07	Madison
19	2018-01-22	2018-01-22	2018-02-07	Madison
20	2018-01-22	2018-01-22	2018-02-07	Madison
21	2018-01-22	2018-01-22	2018-02-07	Madison
22	2018-01-22	2018-01-22	2018-02-07	Madison
23	2018-01-15	2018-01-15	2018-02-07	Madison
24	2018-01-15	2018-01-15	2018-02-07	Madison
25	2018-01-08	2018-01-08	2018-01-31	Madison
26	2018-01-08	2018-01-08	2018-01-31	Madison
27	2018-01-08	2018-01-08	2018-02-06	Madison
28	2018-01-08	2018-01-08	2018-02-06	Madison

28 COLUMNS, 500 ROWS

Figure 24 Columns of Data Shown

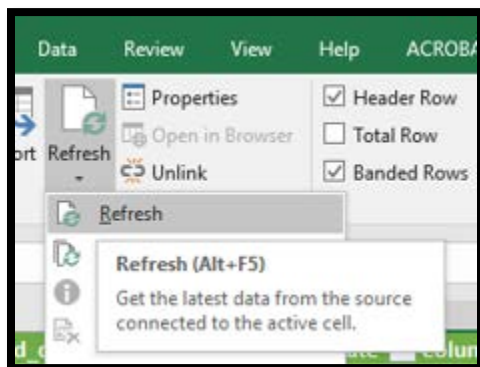
Select “Close and Load” button.



The screen will refresh and appear as below. You have successfully pulled data from the MARS API. You are free to manipulate, modify, or delete data here. This is your local copy of this data.

	Column1.report begin date	Column1.report end date	Column1.published date	Column1.office name	Column1.office code	Column1.office city	Column1.office state	Column1.market location name
1	2018-04-02	2018-04-02	2018-04-04	Madison	DA-MD	Madison	WI	National Cold Storage
2	2018-04-02	2018-04-02	2018-04-04	Madison	DA-MD	Madison	WI	National Cold Storage
3	2018-03-26	2018-03-26	2018-03-28	Madison	DA-MD	Madison	WI	National Cold Storage
4	2018-03-26	2018-03-26	2018-03-28	Madison	DA-MD	Madison	WI	National Cold Storage
5	2018-03-19	2018-03-19	2018-03-21	Madison	DA-MD	Madison	WI	National Cold Storage
6	2018-03-19	2018-03-19	2018-03-21	Madison	DA-MD	Madison	WI	National Cold Storage
7	2018-03-12	2018-03-12	2018-03-14	Madison	DA-MD	Madison	WI	National Cold Storage
8	2018-03-12	2018-03-12	2018-03-14	Madison	DA-MD	Madison	WI	National Cold Storage
9	2018-03-05	2018-03-05	2018-03-07	Madison	DA-MD	Madison	WI	National Cold Storage
10	2018-03-05	2018-03-05	2018-03-07	Madison	DA-MD	Madison	WI	National Cold Storage
11	2018-02-26	2018-02-26	2018-02-28	Madison	DA-MD	Madison	WI	National Cold Storage
12	2018-02-26	2018-02-26	2018-02-28	Madison	DA-MD	Madison	WI	National Cold Storage
13	2018-02-19	2018-02-19	2018-02-21	Madison	DA-MD	Madison	WI	National Cold Storage
14	2018-02-19	2018-02-19	2018-02-21	Madison	DA-MD	Madison	WI	National Cold Storage
15	2018-01-29	2018-01-29	2018-02-07	Madison	DA-MD	Madison	WI	National Cold Storage
16	2018-01-29	2018-01-29	2018-02-07	Madison	DA-MD	Madison	WI	National Cold Storage
17	2018-01-29	2018-01-29	2018-02-07	Madison	DA-MD	Madison	WI	National Cold Storage
18	2018-01-29	2018-01-29	2018-02-07	Madison	DA-MD	Madison	WI	National Cold Storage
19	2018-01-22	2018-01-22	2018-02-07	Madison	DA-MD	Madison	WI	National Cold Storage
20	2018-01-22	2018-01-22	2018-02-07	Madison	DA-MD	Madison	WI	National Cold Storage
21	2018-01-22	2018-01-22	2018-02-07	Madison	DA-MD	Madison	WI	National Cold Storage
22	2018-01-22	2018-01-22	2018-02-07	Madison	DA-MD	Madison	WI	National Cold Storage
23	2018-01-15	2018-01-15	2018-02-07	Madison	DA-MD	Madison	WI	National Cold Storage
24	2018-01-15	2018-01-15	2018-02-07	Madison	DA-MD	Madison	WI	National Cold Storage
25	2018-01-08	2018-01-08	2018-01-31	Madison	DA-MD	Madison	WI	National Cold Storage
26	2018-01-08	2018-01-08	2018-01-31	Madison	DA-MD	Madison	WI	National Cold Storage
27	2018-01-08	2018-01-08	2018-01-31	Madison	DA-MD	Madison	WI	National Cold Storage
28	2018-01-08	2018-01-08	2018-02-06	Madison	DA-MD	Madison	WI	National Cold Storage
29	2018-01-01	2018-01-01	2018-01-31	Madison	DA-MD	Madison	WI	National Cold Storage
30	2018-01-01	2018-01-01	2018-01-31	Madison	DA-MD	Madison	WI	National Cold Storage
31	2018-01-01	2018-01-01	2018-01-31	Madison	DA-MD	Madison	WI	National Cold Storage
32	2018-01-01	2018-01-01	2018-01-31	Madison	DA-MD	Madison	WI	National Cold Storage

At any time, if you want to refresh the data, click the “Refresh” button. The Excel file will automatically pull the data again from the MARS API.



3 Livestock Mandatory Price Reporting System Web Service to Excel

3.1 Overview

The Livestock Mandatory Price Reporting System (LMPRS) offers a public facing Web Service that allowd users to query for publicly released aggregated data reports. The Help Guide for this web service is available [online](#)⁴.

This web service is dated, has limited filtering capabilities, and only offers XML data extraction. It is expected that later in 2018, LMPRS data will be available in MARS via [My Market News](#)⁵. Once on MARS, our customers can pull this data through the API in a Json format.

This guide explains how to create query strings using the URL to request data and provides provides several examples on how to tailor the data to the desired results. The examples use the LM_CT100 5 Area Daily Weight Average Direct Slaughter Cattle – Negotiated report, but these instructions apply to any LMPRS report.

3.2 Implementation

By referencing the Help Guide, there are several working examples to pull from. Users are free to tweek the URL to the data query they desire.

The URL for pulling “LM_CT100, 5 Area Daily Weighted Average Direct Slaughter Cattle – Negotiated” for data between 01/08/2018 and 01/12/2018, below is:

[https://mpr.datamart.ams.usda.gov/ws/report/v1/cattle/LM_CT100?filter={\"filters\": \[{\"fieldName\": \"Report%20date\", \"operatorType\": \"BETWEEN\", \"values\": \[\"01/08/2018\", \"01/12/2018\"\]}\] }](https://mpr.datamart.ams.usda.gov/ws/report/v1/cattle/LM_CT100?filter={\)

You will enter this URL into your browser and all of the data associated with that report between those dates will appear. The figure below shows what you will see.

⁴ <https://mpr.ams.usda.gov/mpr/webServiceGuide.pdf>

⁵ <https://mymarketnews.ams.usda.gov/>

To save, click Select File, Save As

```
<?xml version="1.0" encoding="UTF-8" ?>
<results exportTime="2018-04-17 08:19:33 CDT">
  <report label="5 Area Daily Weighted Average Direct Slaughter Cattle - Negotiated" slug="LM_CT100">
    <record report_date="01/12/2018" previous_day_head_count="5,539" narrative="null">
      <report label="Detail">
        <record class_description="Steer" selling_basis_description="Dressed" grade_description="Over 80% Choice" head_count="1,012" weight_range_low="872" weight_range_high="961" weight_range_avg="916" price_range_high="193.00" weighted_avg_price="190.56" />
        <record class_description="Steer" selling_basis_description="Dressed" grade_description="65 - 80% Choice" head_count="215" weight_range_low="859" weight_range_high="899" weight_range_avg="879" price_range_high="191.00" weighted_avg_price="190.74" />
        <record class_description="Steer" selling_basis_description="Dressed" grade_description="35 - 65% Choice" head_count="null" weight_range_low="null" weight_range_high="null" weight_range_avg="null" weighted_avg_price="null" />
        <record class_description="Steer" selling_basis_description="Dressed" grade_description="0 - 35% Choice" head_count="null" weight_range_low="null" weight_range_high="null" weight_range_avg="null" weighted_avg_price="null" />
        <record class_description="Steer" selling_basis_description="Dressed" grade_description="Total all grades" head_count="1,227" weight_range_low="859" weight_range_high="961" weight_range_avg="916" price_range_high="193.00" weighted_avg_price="190.56" />
        <record class_description="Steer" selling_basis_description="Live" grade_description="Over 80% Choice" head_count="805" weight_range_low="1,400" weight_range_high="1,550" weight_range_avg="1,475" price_range_high="121.00" weighted_avg_price="120.19" />
        <record class_description="Steer" selling_basis_description="Live" grade_description="65 - 80% Choice" head_count="108" weight_range_low="1,450" weight_range_high="1,450" weight_range_avg="1,450" price_range_high="120.00" weighted_avg_price="120.00" />
        <record class_description="Steer" selling_basis_description="Live" grade_description="35 - 65% Choice" head_count="479" weight_range_low="1,500" weight_range_high="1,500" weight_range_avg="1,500" price_range_high="120.00" weighted_avg_price="120.00" />
        <record class_description="Steer" selling_basis_description="Live" grade_description="0 - 35% Choice" head_count="null" weight_range_low="null" weight_range_high="null" weight_range_avg="null" weighted_avg_price="null" />
        <record class_description="Steer" selling_basis_description="Live" grade_description="Total all grades" head_count="1,392" weight_range_low="1,400" weight_range_high="1,550" weight_range_avg="1,475" price_range_high="121.00" weighted_avg_price="120.11" />
        <record class_description="Heifer" selling_basis_description="Dressed" grade_description="Over 80% Choice" head_count="315" weight_range_low="788" weight_range_high="886" weight_range_avg="837" price_range_high="193.00" weighted_avg_price="192.57" />
        <record class_description="Heifer" selling_basis_description="Dressed" grade_description="65 - 80% Choice" head_count="155" weight_range_low="832" weight_range_high="832" weight_range_avg="832" price_range_high="191.00" weighted_avg_price="191.00" />
        <record class_description="Heifer" selling_basis_description="Dressed" grade_description="35 - 65% Choice" head_count="null" weight_range_low="null" weight_range_high="null" weight_range_avg="null" weighted_avg_price="null" />
        <record class_description="Heifer" selling_basis_description="Dressed" grade_description="0 - 35% Choice" head_count="null" weight_range_low="null" weight_range_high="null" weight_range_avg="null" weighted_avg_price="null" />
        <record class_description="Heifer" selling_basis_description="Dressed" grade_description="Total all grades" head_count="470" weight_range_low="788" weight_range_high="886" weight_range_avg="837" price_range_high="193.00" weighted_avg_price="192.05" />
        <record class_description="Heifer" selling_basis_description="Live" grade_description="Over 80% Choice" head_count="932" weight_range_low="1,275" weight_range_high="1,400" weight_range_avg="1,337" price_range_high="123.25" weighted_avg_price="121.30" />
        <record class_description="Heifer" selling_basis_description="Live" grade_description="65 - 80% Choice" head_count="114" weight_range_low="1,135" weight_range_high="1,135" weight_range_avg="1,135" price_range_high="119.00" weighted_avg_price="119.00" />
        <record class_description="Heifer" selling_basis_description="Live" grade_description="35 - 65% Choice" head_count="52" weight_range_low="1,285" weight_range_high="1,285" weight_range_avg="1,285" price_range_high="119.00" weighted_avg_price="119.00" />
        <record class_description="Heifer" selling_basis_description="Live" grade_description="0 - 35% Choice" head_count="null" weight_range_low="null" weight_range_high="null" weight_range_avg="null" weighted_avg_price="null" />
        <record class_description="Heifer" selling_basis_description="Live" grade_description="Total all grades" head_count="1,098" weight_range_low="1,135" weight_range_high="1,400" weight_range_avg="1,274" price_range_high="123.25" weighted_avg_price="120.95" />
      </report>
    </record>
  </report>
  <record report_date="01/11/2018" previous_day_head_count="11,871" narrative="null">
    <report label="Detail">
      <record class_description="Steer" selling_basis_description="Dressed" grade_description="Over 80% Choice" head_count="320" weight_range_low="940" weight_range_high="960" weight_range_avg="950" price_range_high="193.00" weighted_avg_price="192.90" />
    </report>
  </record>
</results>
```

Figure 25 LMPRS Data shown in XML format

The filename will populate with your selected data set. Save to a local location. Select “Save”.

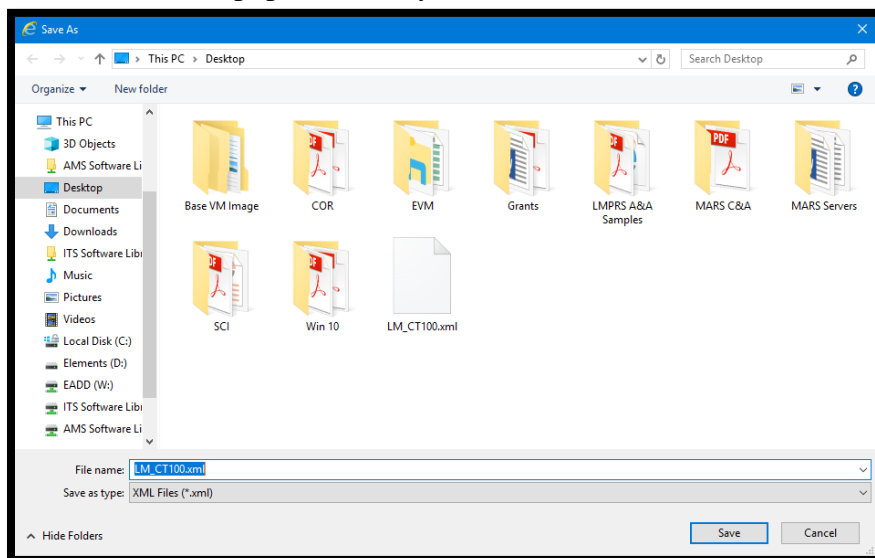


Figure 26 Save XML File down to your local machine

Open Microsoft Excel with a blank Worksheet.

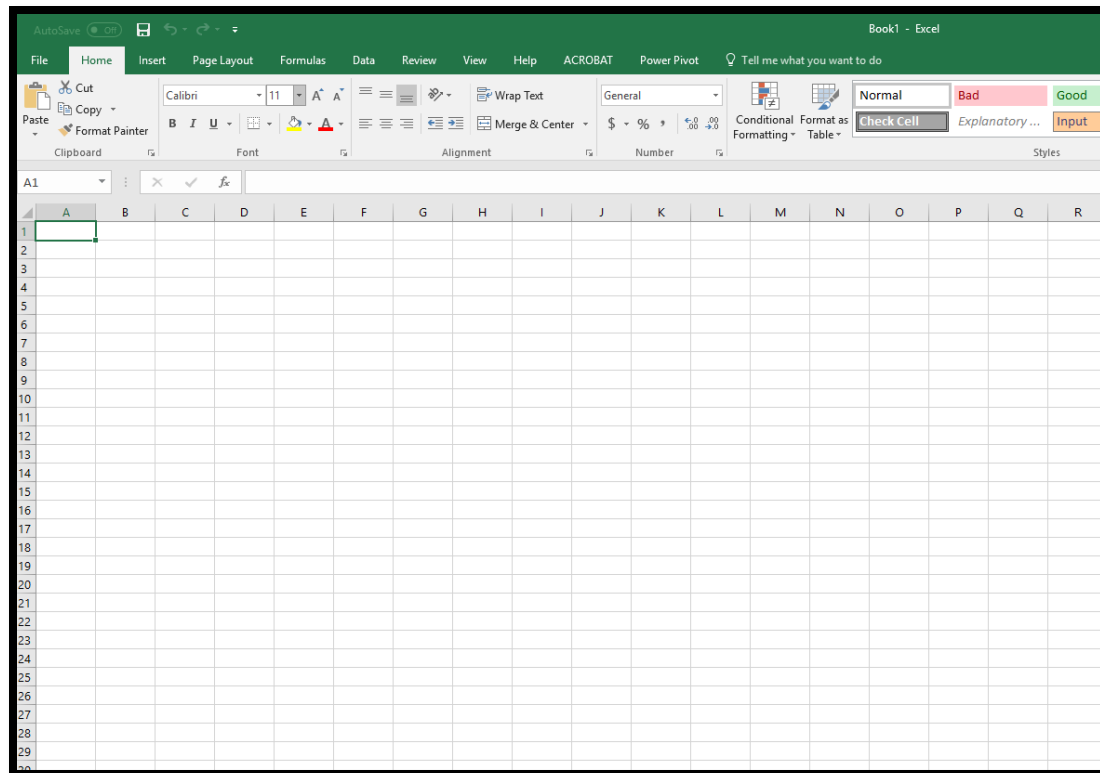


Figure 27 Excel with blank worksheet

Select File >> Open >> Browse >> Select XML file. Select Open.

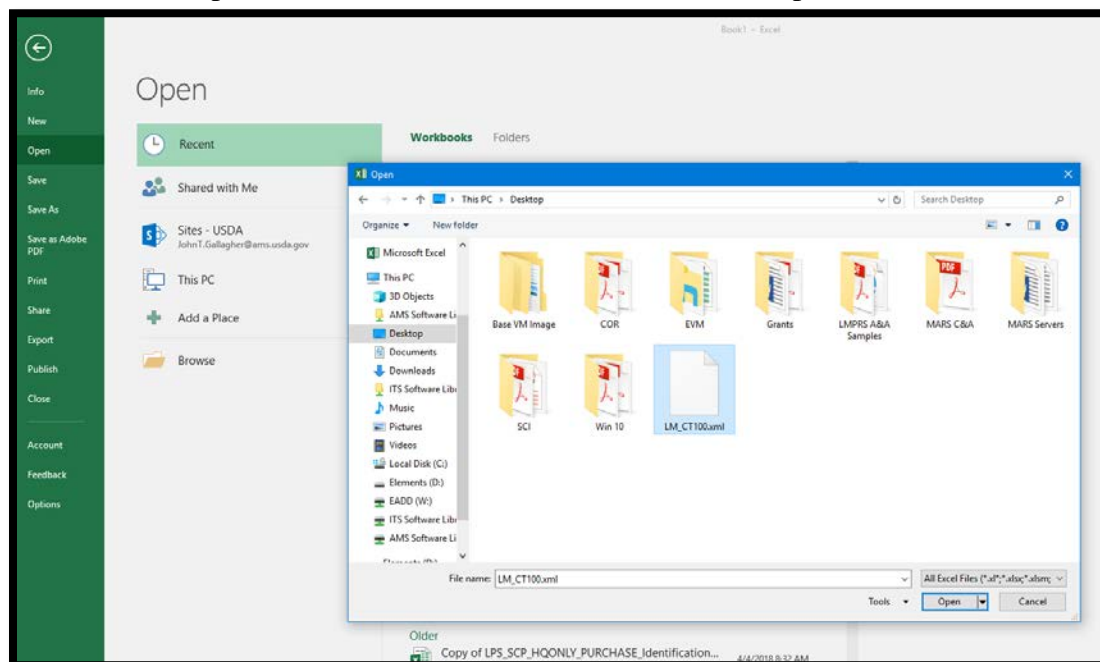


Figure 28 Select XML file

A menu will appear. Leave the default selection and select "OK".

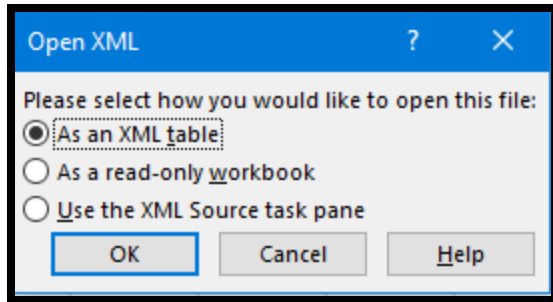


Figure 29 Leave default selection and select OK

Data will automatically import and display as below:

exportTime	label	slug	report_date	previous_day_head count	narrative	label2	class description	selling basis description	grade description	head count	weight range
2018-04-17 08:19:32 CDT	5 Area Daily Weighted Average Direct Slaughter Cattle - Negotiated	LM_CT100 01/12/2018	5,539	null	Detail	Steer	Dressed	Over 80% Choice	1,012	672	
2018-04-17 08:19:32 CDT	5 Area Daily Weighted Average Direct Slaughter Cattle - Negotiated	LM_CT100 01/12/2018	5,539	null	Detail	Steer	Dressed	65 - 80% Choice	215	859	
2018-04-17 08:19:32 CDT	5 Area Daily Weighted Average Direct Slaughter Cattle - Negotiated	LM_CT100 01/12/2018	5,539	null	Detail	Steer	Dressed	35 - 65% Choice	null	null	
2018-04-17 08:19:32 CDT	5 Area Daily Weighted Average Direct Slaughter Cattle - Negotiated	LM_CT100 01/12/2018	5,539	null	Detail	Steer	Dressed	0 - 35% Choice	null	null	
2018-04-17 08:19:32 CDT	5 Area Daily Weighted Average Direct Slaughter Cattle - Negotiated	LM_CT100 01/12/2018	5,539	null	Detail	Steer	Dressed	Total all grades	1,227	659	
2018-04-17 08:19:32 CDT	5 Area Daily Weighted Average Direct Slaughter Cattle - Negotiated	LM_CT100 01/12/2018	5,539	null	Detail	Steer	Live	Over 80% Choice	905	1,400	
2018-04-17 08:19:32 CDT	5 Area Daily Weighted Average Direct Slaughter Cattle - Negotiated	LM_CT100 01/12/2018	5,539	null	Detail	Steer	Live	65 - 80% Choice	108	1,450	
2018-04-17 08:19:32 CDT	5 Area Daily Weighted Average Direct Slaughter Cattle - Negotiated	LM_CT100 01/12/2018	5,539	null	Detail	Steer	Live	35 - 65% Choice	479	1,300	
2018-04-17 08:19:32 CDT	5 Area Daily Weighted Average Direct Slaughter Cattle - Negotiated	LM_CT100 01/12/2018	5,539	null	Detail	Steer	Live	0 - 35% Choice	null	null	
2018-04-17 08:19:32 CDT	5 Area Daily Weighted Average Direct Slaughter Cattle - Negotiated	LM_CT100 01/12/2018	5,539	null	Detail	Steer	Live	Total all grades	1,192	1,400	
2018-04-17 08:19:32 CDT	5 Area Daily Weighted Average Direct Slaughter Cattle - Negotiated	LM_CT100 01/12/2018	5,539	null	Detail	Heifer	Dressed	Over 80% Choice	515	788	
2018-04-17 08:19:32 CDT	5 Area Daily Weighted Average Direct Slaughter Cattle - Negotiated	LM_CT100 01/12/2018	5,539	null	Detail	Heifer	Dressed	65 - 80% Choice	155	832	
2018-04-17 08:19:32 CDT	5 Area Daily Weighted Average Direct Slaughter Cattle - Negotiated	LM_CT100 01/12/2018	5,539	null	Detail	Heifer	Dressed	35 - 65% Choice	null	null	
2018-04-17 08:19:32 CDT	5 Area Daily Weighted Average Direct Slaughter Cattle - Negotiated	LM_CT100 01/12/2018	5,539	null	Detail	Heifer	Dressed	0 - 35% Choice	null	null	
2018-04-17 08:19:32 CDT	5 Area Daily Weighted Average Direct Slaughter Cattle - Negotiated	LM_CT100 01/12/2018	5,539	null	Detail	Heifer	Dressed	Total all grades	470	788	
2018-04-17 08:19:32 CDT	5 Area Daily Weighted Average Direct Slaughter Cattle - Negotiated	LM_CT100 01/12/2018	5,539	null	Detail	Heifer	Live	Over 80% Choice	612	1,275	
2018-04-17 08:19:32 CDT	5 Area Daily Weighted Average Direct Slaughter Cattle - Negotiated	LM_CT100 01/12/2018	5,539	null	Detail	Heifer	Live	65 - 80% Choice	114	1,135	
2018-04-17 08:19:32 CDT	5 Area Daily Weighted Average Direct Slaughter Cattle - Negotiated	LM_CT100 01/12/2018	5,539	null	Detail	Heifer	Live	35 - 65% Choice	52	1,285	
2018-04-17 08:19:32 CDT	5 Area Daily Weighted Average Direct Slaughter Cattle - Negotiated	LM_CT100 01/12/2018	5,539	null	Detail	Heifer	Live	0 - 35% Choice	null	null	
2018-04-17 08:19:32 CDT	5 Area Daily Weighted Average Direct Slaughter Cattle - Negotiated	LM_CT100 01/12/2018	5,539	null	Detail	Heifer	Live	Total all grades	1,098	1,135	
2018-04-17 08:19:32 CDT	5 Area Daily Weighted Average Direct Slaughter Cattle - Negotiated	LM_CT100 01/12/2018	11,871	null	Detail	Steer	Dressed	Over 80% Choice	520	840	
2018-04-17 08:19:32 CDT	5 Area Daily Weighted Average Direct Slaughter Cattle - Negotiated	LM_CT100 01/11/2018	11,871	null	Detail	Steer	Dressed	65 - 80% Choice	518	895	
2018-04-17 08:19:32 CDT	5 Area Daily Weighted Average Direct Slaughter Cattle - Negotiated	LM_CT100 01/11/2018	11,871	null	Detail	Steer	Dressed	35 - 65% Choice	176	882	
2018-04-17 08:19:32 CDT	5 Area Daily Weighted Average Direct Slaughter Cattle - Negotiated	LM_CT100 01/11/2018	11,871	null	Detail	Steer	Dressed	0 - 35% Choice	null	null	
2018-04-17 08:19:32 CDT	5 Area Daily Weighted Average Direct Slaughter Cattle - Negotiated	LM_CT100 01/11/2018	11,871	null	Detail	Steer	Dressed	Total all grades	1,434	882	
2018-04-17 08:19:32 CDT	5 Area Daily Weighted Average Direct Slaughter Cattle - Negotiated	LM_CT100 01/11/2018	11,871	null	Detail	Steer	Live	Over 80% Choice	2,469	1,350	
2018-04-17 08:19:32 CDT	5 Area Daily Weighted Average Direct Slaughter Cattle - Negotiated	LM_CT100 01/11/2018	11,871	null	Detail	Steer	Live	65 - 80% Choice	796	1,300	
2018-04-17 08:19:32 CDT	5 Area Daily Weighted Average Direct Slaughter Cattle - Negotiated	LM_CT100 01/11/2018	11,871	null	Detail	Steer	Live	35 - 65% Choice	103	1,350	
2018-04-17 08:19:32 CDT	5 Area Daily Weighted Average Direct Slaughter Cattle - Negotiated	LM_CT100 01/11/2018	11,871	null	Detail	Steer	Live	0 - 35% Choice	null	null	
2018-04-17 08:19:32 CDT	5 Area Daily Weighted Average Direct Slaughter Cattle - Negotiated	LM_CT100 01/11/2018	11,871	null	Detail	Steer	Live	Total all grades	3,364	1,300	
2018-04-17 08:19:32 CDT	5 Area Daily Weighted Average Direct Slaughter Cattle - Negotiated	LM_CT100 01/11/2018	11,871	null	Detail	Heifer	Dressed	Over 80% Choice	389	772	
2018-04-17 08:19:32 CDT	5 Area Daily Weighted Average Direct Slaughter Cattle - Negotiated	LM_CT100 01/11/2018	11,871	null	Detail	Heifer	Dressed	65 - 80% Choice	null	null	
2018-04-17 08:19:32 CDT	5 Area Daily Weighted Average Direct Slaughter Cattle - Negotiated	LM_CT100 01/11/2018	11,871	null	Detail	Heifer	Dressed	35 - 65% Choice	null	null	
2018-04-17 08:19:32 CDT	5 Area Daily Weighted Average Direct Slaughter Cattle - Negotiated	LM_CT100 01/11/2018	11,871	null	Detail	Heifer	Dressed	0 - 35% Choice	null	null	
2018-04-17 08:19:32 CDT	5 Area Daily Weighted Average Direct Slaughter Cattle - Negotiated	LM_CT100 01/11/2018	11,871	null	Detail	Heifer	Dressed	Total all grades	589	772	
2018-04-17 08:19:32 CDT	5 Area Daily Weighted Average Direct Slaughter Cattle - Negotiated	LM_CT100 01/11/2018	11,871	null	Detail	Heifer	Live	Over 80% Choice	1,259	1,150	
2018-04-17 08:19:32 CDT	5 Area Daily Weighted Average Direct Slaughter Cattle - Negotiated	LM_CT100 01/11/2018	11,871	null	Detail	Heifer	Live	65 - 80% Choice	430	1,150	

Figure 30 Imported XML Data showing.

The import of LMPRS data into the spreadsheet is static. It is not dynamically connected to LMPRS, as is the MARS API is. The AMS team is working to incorporate LMPRS data into the MARS API so that in the future, users will be able to have both voluntary and mandatory in one location. This incorporation will be completed by the end of 2018.