

NEBRASKA WEEKLY SUMMARY

Recap For Week Ending

April 28, 2023

Receipts: This Week: 26,842 Week Ago: 10,267 Year Ago: 27,772

Compared to last week steers under 700 lbs sold 7.00 to 10.00 higher, 700 weight steers sold 5.00 lower and over 800 lbs sold 2.00 to 4.00 higher. Heifers under 600 lbs sold 4.00 to 8.00 higher, 600 to 800 lbs sold unevenly steady and over 800 lbs sold 1.00 higher. Demand was good at area auctions with active internet buying. Another very dry week with only spotty rain showers reported across the state. Last Thursday the US Drought monitor placed most of the state in the extreme category. Most of this area has a large supply of summer range that might not get used as fires and dryness will limit summer grazing. Some producers could be between a rock and hard spot as limited hay supplies prevail and might not get to turn out till late June that is if rain comes in May. Feedlot trade in Nebraska sold live sales 2.00 to 7.00 lower than last week at 178.00 and dressed sales sold 1.00 to 4.00 lower from 283.00 to 286.00.

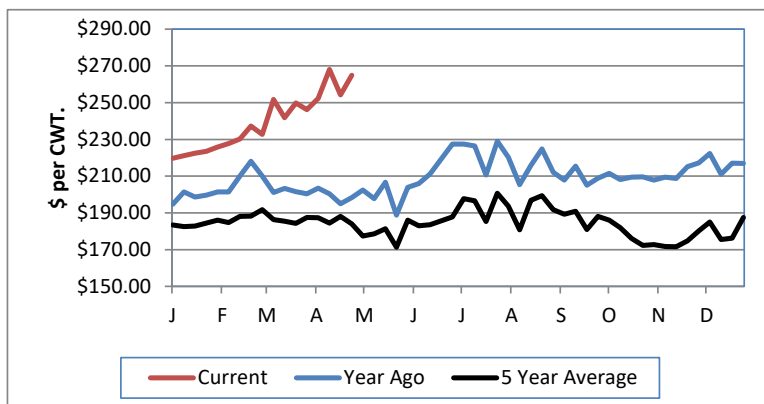
NEBRASKA WEEKLY FEEDER CATTLE AVERAGES

[Auction Summary](#)

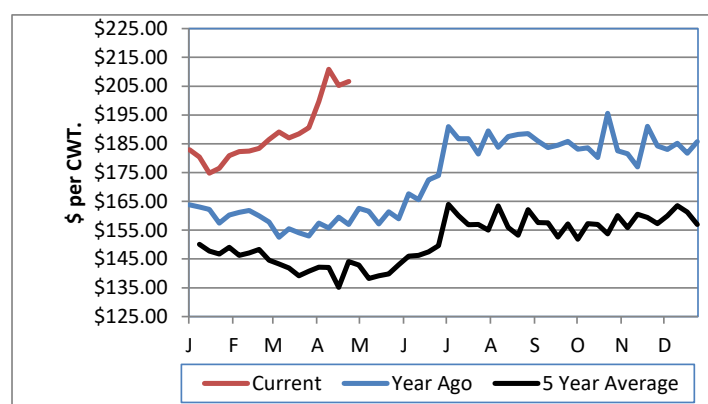
Feeder Steers:	This Week	Last Week	Year Ago
M&L 1			
400-500 lbs.	\$284.02	\$269.54	\$215.55
500-600 lbs.	\$264.89	\$254.20	\$198.27
600-700 lbs.	\$245.64	\$238.29	\$185.18
700-800 lbs.	\$219.19	\$224.31	\$166.00
800-900 lbs.	\$206.67	\$205.25	\$156.98
900-1000 lbs.	\$193.03	\$187.00	\$150.06

Feeder Heifers	This Week	Last Week	Year Ago
M&L 1			
400-500 lbs.	\$252.78	\$244.77	\$183.50
500-600 lbs.	\$235.41	\$239.03	\$172.57
600-700 lbs.	\$217.36	\$219.28	\$163.19
700-800 lbs.	\$198.42	\$200.20	\$150.31
800-900 lbs.	\$184.42	\$183.54	\$142.67
900-1000 lbs.	\$175.45	\$177.50	\$135.18

Weekly M&L 1 500-600 lb. Feeder Steer Price



Weekly M&L 1 800-900 lb. Feeder Steer Price



Nebraska Weekly Hay Prices

[Weekly Hay Report](#)

	Squares	Rounds
Alfalfa		
Supreme		
Premium Small	10.00 per bale	
Good		200.00-225.00
Fair		
Grass		
Premium Small	8.00-9.00 per bl	
Good		220.00-225.00
Fair		
Ground & Delivered Alfalfa		275.00-285.00
Ground & Delivered Cornstalks		155.00-160.00

Nebraska Weekly Weighted Average Cattle Report

[AMS 2485](#)

	This Week	Last Week	Last Year
Live Str	178.80	181.88	145.55
Live Hfr	178.03	181.91	145.72
Dressed Str	284.29	287.79	232.58
Dressed Hfr	283.12	286.98	233.20

Nebraska Weekly Grain Prices

[Omaha-Council Bluffs - Changed to IA -Terminal Elevator - Southwest](#)

US NO 2 YELLOW CORN	\$6.32 - \$6.61
US NO 1 SOYBEANS	\$14.39 - \$14.76

Nebraska Ethanol Co-Products

	Price
DDG	260.00-285.00
Modified Wet	125.00-142.00
Wet	100.00-114.00

USDA Livestock, Poultry and Grain Market News
 Nebraska

Thomas Walthers, OIC
 Phone: (308) 390-5399
 Email: Thomas.Walthers@usda.gov
www.ams.usda.gov/lpsmarketnewspage