

NEBRASKA WEEKLY SUMMARY

Recap For Week Ending

April 21, 2023

Receipts: This Week: 10,267 Week Ago: 27,088 Year Ago: 13,230

Compared to last week steers sold 5.00 to 7.00 lower and heifers sold mostly steady with 500 weight trading 5.00 higher. Demand was good for the light supply of calves and feeders on hand. Lower trading CME cattle futures might have had some effect on the lower trending auctions. Quite a few fires across the state will have a huge impact on cattle not getting sent to summer grass. Several thousand acres of Sandhills pastures have been destroyed in the last couple of weeks. Mother Nature needs to bring some all-day rains to help heal these regions. Hard to say how long these natural pastures will have to set ideal before they can be restocked to manageable numbers. Nebraska feedlot trade was unevenly steady on the week. Live sales ranged from 180.00 to 185.00 and dressed sales from 288.00 to 290.00.

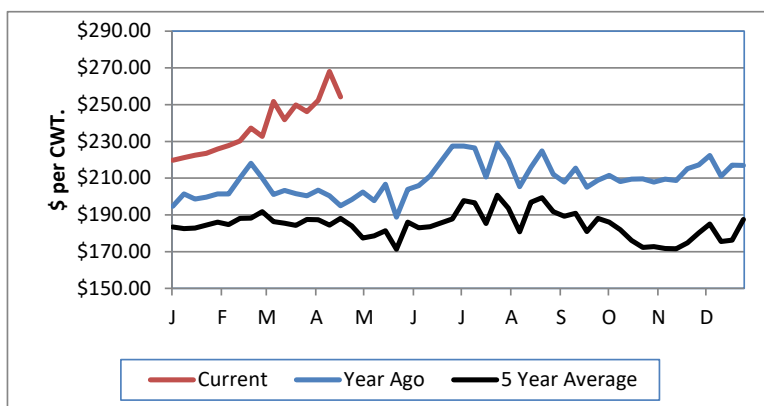
NEBRASKA WEEKLY FEEDER CATTLE AVERAGES

[Auction Summary](#)

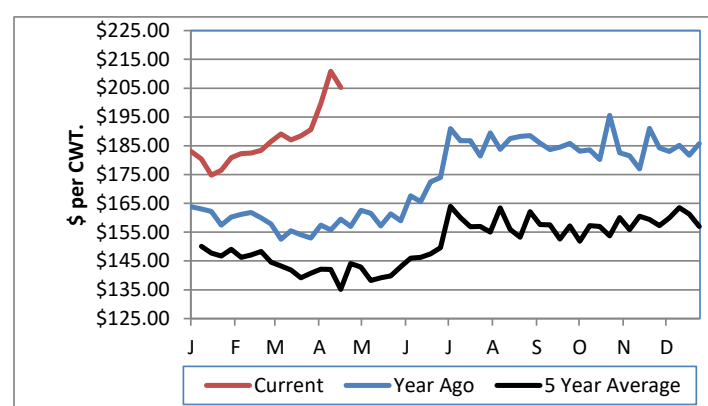
Feeder Steers:	This Week	Last Week	Year Ago
M&L 1			
400-500 lbs.	\$269.54	\$288.44	\$210.67
500-600 lbs.	\$254.20	\$268.06	\$195.02
600-700 lbs.	\$238.29	\$244.97	\$183.11
700-800 lbs.	\$224.31	\$230.47	\$170.93
800-900 lbs.	\$205.25	\$210.86	\$159.55
900-1000 lbs.	\$187.00	\$190.00	\$151.96

Feeder Heifers	This Week	Last Week	Year Ago
M&L 1			
400-500 lbs.	\$244.77	\$256.70	\$181.78
500-600 lbs.	\$239.03	\$234.52	\$173.91
600-700 lbs.	\$219.28	\$220.88	\$162.99
700-800 lbs.	\$200.20	\$200.27	\$152.44
800-900 lbs.	\$183.54	\$183.84	\$137.57
900-1000 lbs.	\$177.50	\$177.96	\$122.15

Weekly M&L 1 500-600 lb. Feeder Steer Price



Weekly M&L 1 800-900 lb. Feeder Steer Price



Nebraska Weekly Hay Prices

[Weekly Hay Report](#)

	Squares	Rounds
Alfalfa		
Supreme		
Premium		
Good		220.00
Fair		
Grass		
Premium small	8.00-9.00 per bl	
Good		200.00-225.00
Fair		
Ground & Delivered Alfalfa		275.00-285.00
Ground & Delivered Cornstalks		155.00-160.00

Nebraska Weekly Weighted Average Cattle Report

[AMS 2485](#)

	This Week	Last Week	Last Year
Live Str	181.88	183.37	145.11
Live Hfr	181.91	182.59	145.22
Dressed Str	287.79	289.83	232.80
Dressed Hfr	286.98	289.26	231.36

Nebraska Weekly Grain Prices

[Omaha-Council Bluffs - Changed to IA -Terminal Elevator - Southwest](#)

US NO 2 YELLOW CORN	\$6.63 - \$6.95
US NO 1 SOYBEANS	\$14.85 - \$15.31

Nebraska Ethanol Co-Products

	Price
DDG	265.00-285.00
Modified Wet	125.00-145.00
Wet	100.00-115.00

USDA Livestock, Poultry and Grain Market News
 Nebraska

Thomas Walthers, OIC
 Phone: (308) 390-5399
 Email: Thomas.Walthers@usda.gov
www.ams.usda.gov/lpsmarketnewspage