

## NEBRASKA WEEKLY SUMMARY

Recap For Week Ending

May 3, 2019

**Receipts:** This Week: 21,532 Week Ago: 15,569 Year Ago: 18,272

Compared to last week steers under 550 lbs sold 6.00 to 7.00 lower, 550 to 750 lbs sold 11.00 to 13.00 lower and over 750 lbs sold 4.00 to 8.00 lower. Heifers under 600 lbs sold steady to 4.00 lower, 600 to 800 lbs sold 4.00 to 8.00 lower and over 800 lbs steady to 1.00 lower. Demand was moderate on feeders going to the feedlot with good demand for cattle suited for summer grass. Feedlots managers were mostly willing sellers this week as Nebraska feedlots moved a hefty number of market ready cattle, with weekly head count a tick over 61,000 head. This is 29,500 head more than last week and 27,000 more than same week last year. The worst news of the week is the market traded lower with live sales 1.00 to 3.00 lower at 124.00 and dressed sales 5.00 lower at 200.00. Supply included: 96% Feeder Cattle (45% Steers, 55% Heifers, 0% Bulls). Feeder cattle supply over 600 lbs was 62%.

## NEBRASKA WEEKLY FEEDER CATTLE AVERAGES

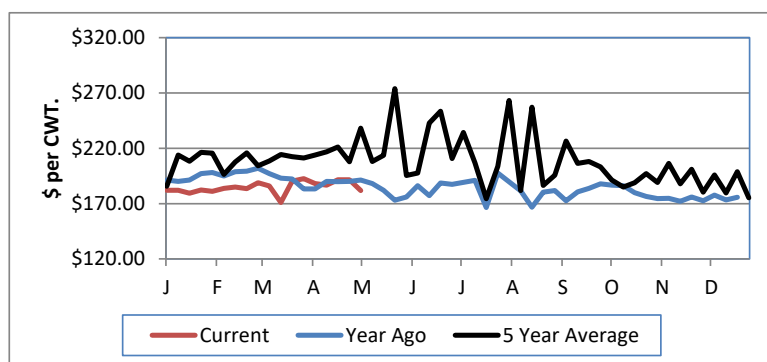
[Auction Summary](#)**Feeder****Steers:**  
**M&L 1****This**  
**Week****Year**  
**Ago**

400-500 lbs.	\$192.38	\$204.84
500-600 lbs.	\$182.68	\$191.69
600-700 lbs.	\$170.84	\$167.36
700-800 lbs.	\$151.51	\$151.44
800-900 lbs.	\$142.10	\$130.51
900-1000 lbs.	\$134.42	\$129.25

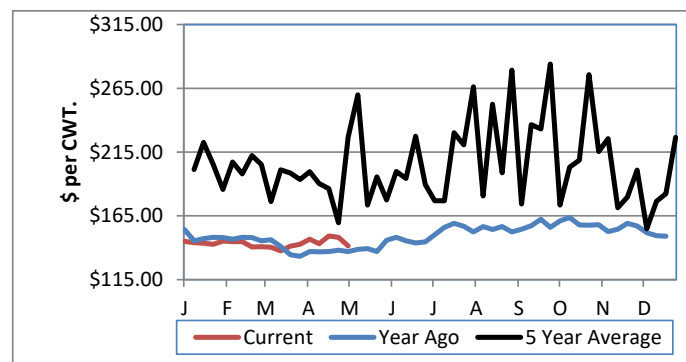
**Feeder****Heifers**  
**M&L 1****This**  
**Week****Year**  
**Ago**

400-500 lbs.	\$170.84	\$179.14
500-600 lbs.	\$160.02	\$161.62
600-700 lbs.	\$148.46	\$149.86
700-800 lbs.	\$138.72	\$135.45
800-900 lbs.	\$129.67	\$124.84
900-1000 lbs.	\$122.24	\$117.86

Weekly M&amp;L 1 500-600 lb. Feeder Steer Price



Weekly M&amp;L 1 800-900 lb. Feeder Steer Price



## Nebraska Weekly Hay Prices

[Weekly Hay Report](#)

Squares

Rounds

**Alfalfa**

Supreme	LG		
Premium	LG		
Good	LG	150.00-160.00	110.00-140.00
Fair	LG		

**Grass**

Premium	SM	160.00-170.00	100.00-110.00
Good	LG		90.00-95.00

Ground &amp; Delivered Alfalfa 140.00-160.00

Ground &amp; Delivered Alf/stover 135.00-140.00

## Nebraska Weekly Weighted Average Cattle Report

[lm ct158.txt](#)

	This Week	Last Week	Last Year
Live Str	123.78	126.18	124.68
Live Hfr	124.01	126.20	123.48
Dressed Str	198.39	204.47	192.63
Dressed Hfr	198.60	205.22	194.02

## Nebraska Weekly Grain Prices

**Omaha-Council Bluffs Grain Bids Bid**

US NO 2 YELLOW CORN	3.55-3.71
US NO 1 SOYBEANS	7.72-7.94

## Nebraska Ethanol Co-Products Weekly Prices

	Weekly
DDG	110.00-137.00
Modified Wet	55.00-66.00
Wet	35.00-55.00

**USDA Livestock, Poultry and Grain Market News**  
Nebraska

Thomas Walthers, OIC  
Phone: (308) 390-5399  
Email: [Kearney.LPGMN@ams.usda.gov](mailto:Kearney.LPGMN@ams.usda.gov)  
[www.ams.usda.gov/lpsmarketnewspage](http://www.ams.usda.gov/lpsmarketnewspage)