

NEBRASKA WEEKLY SUMMARY

Recap For Week Ending

April 27, 2019

Receipts: This Week: 15,569 Week Ago: 21,211 Year Ago: 18,609

Compared to last week, steers under 600 lbs sold mostly steady to 2.00 lower, over 600 lbs sold steady to 5.00 lower. Heifers sold 2.00 to 4.00 lower. Even though the market was lower this week demand was good at all reporting auctions. Quite a few of this weeks cattle would have been sold a couple weeks ago but the winter weather delayed the marketing. With auctions sales going to a biweekly sales routine farmer/feeders and order buyers chased the lots of cattle suited for summer turn out hoping to fill pastures with any weight of cattle that is in the flesh condition for summer turnout. Some of the light weight 700 lbs cattle are fitting that bill and will be heading to greener pastures instead of eating chopped grass from a bunk. Area feedlots traded harvest steers and heifers at lower money as the CME cattle boards fell out of bed and traded sharply lower Wednesday and Thursday. Live sales sold 3.00 to 5.00 lower from 125.00-127.00 and dressed sales sold mostly 3.00 lower at 205.00. Supply included: 100% Feeder Cattle (55% Steers, 45% Heifers, 0% Bulls). Feeder cattle supply over 600 lbs was 62%.

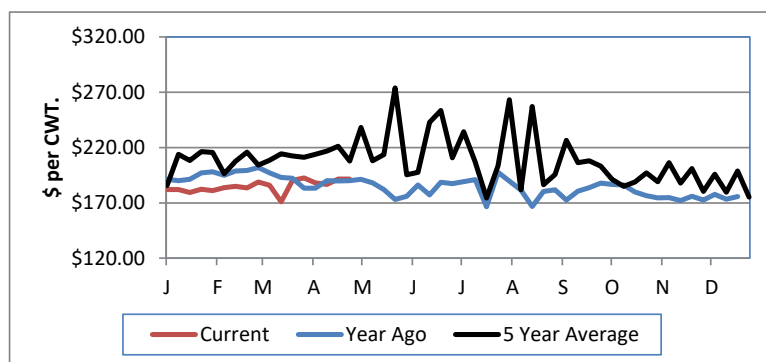
NEBRASKA WEEKLY FEEDER CATTLE AVERAGES

[Auction Summary](#)

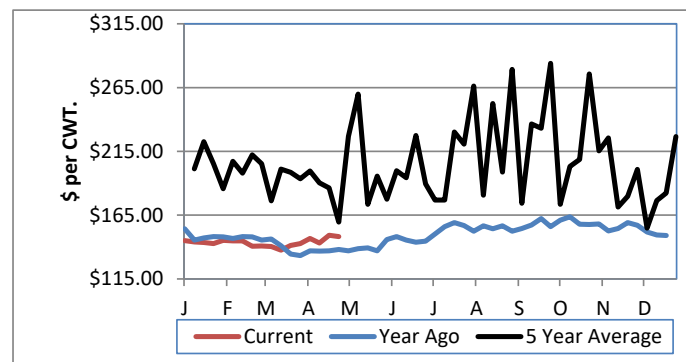
Feeder Steers: M&L 1	This Week	Year Ago
400-500 lbs.	\$200.22	\$204.84
500-600 lbs.	\$191.23	\$189.87
600-700 lbs.	\$177.95	\$172.91
700-800 lbs.	\$160.84	\$157.31
800-900 lbs.	\$148.42	\$137.98
900-1000 lbs.	\$139.76	\$130.29

Feeder Heifers M&L 1	This Week	Year Ago
400-500 lbs.	\$170.35	\$180.01
500-600 lbs.	\$161.76	\$164.96
600-700 lbs.	\$155.78	\$149.99
700-800 lbs.	\$142.79	\$137.70
800-900 lbs.	\$133.55	\$126.88
900-1000 lbs.	\$125.50	\$116.97

Weekly M&L 1 500-600 lb. Feeder Steer Price



Weekly M&L 1 800-900 lb. Feeder Steer Price



Nebraska Weekly Hay Prices

[Weekly Hay Report](#)

		Squares	Rounds
Alfalfa			
Supreme	LG		
Premium	LG		
Good	LG	150.00-160.00	110.00-140.00
Fair	LG		
Grass			
Premium	SM	160.00-170.00	100.00-110.00
Good	LG		90.00-95.00
Ground & Delivered Alfalfa		140.00-160.00	
Ground & Delivered Alf/stover		135.00-140.00	

Nebraska Weekly Weighted Average Cattle Report

[lm ct158.txt](#)

	This Week	Last Week	Last Year
Live Str	126.18	129.82	123.91
Live Hfr	126.20	129.19	124.39
Dressed Str	204.47	207.82	195.97
Dressed Hfr	205.22	208.01	194.12

Nebraska Weekly Grain Prices

Omaha-Council Bluffs Grain Bids Bid

US NO 2 YELLOW CORN	3.49-3.60
US NO 1 SOYBEANS	7.95-8.17

Nebraska Ethanol Co-Products Weekly Prices

	Weekly
DDG	115.00-147.00
Modified Wet	60.00-74.00
Wet	40.00-54.00

USDA Livestock, Poultry and Grain Market News
Nebraska

Thomas Walthers, OIC
Phone: (308) 390-5399
Email: Kearney.LPGMN@ams.usda.gov
www.ams.usda.gov/lpsmarketnewspage