

NEBRASKA WEEKLY SUMMARY

Recap For Week Ending

April 13, 2019

Receipts: This Week: 7,444 Week Ago: 23,126 Year Ago: 13,187

Compared to last week, steers under 500 lbs sold 5.00 higher with all other weights trading mostly steady. Heifers under 500 lbs sold 2.00 higher, 500 to 600 lbs sold 7.00 higher and over 600 lbs sold steady to 3.00 higher. Demand was good throughout the week at all reporting auctions. Several auctions were cancelled due to the bomb cyclone 2 that blew across the state Wednesday and Thursday. Nebraska feedlot trade occurred on Friday with live sales trading 1.00 to 2.00 higher from 127.00-128.00 and dressed sales steady from 205.00-206.00. LPGMN is going to a new report format and all auction reports will be released as a PDF report. On the LPGMN website (<https://www.ams.usda.gov/market-news/feeder-and-replacement-cattle-auctions#Nebraska>) please click on the PDF to view the sale. As mentioned above this weekly report will be released every Friday from data accumulated from Friday to Thursday each week. The weekly Nebraska PDF will still be released on Monday. The sales data this week comprised of 58 percent steers with near 64 percent of the run over 600 lbs.

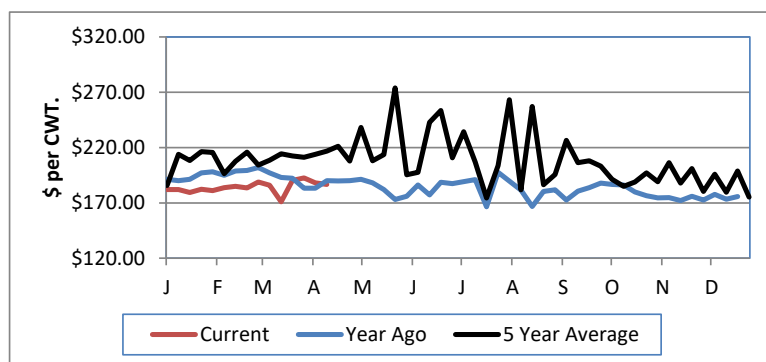
NEBRASKA WEEKLY FEEDER CATTLE AVERAGES

[Auction Summary](#)

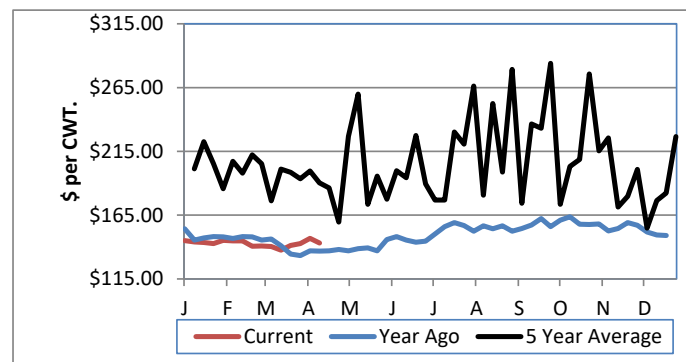
Feeder Steers: M&L 1	This Week	Year Ago
400-500 lbs.	\$201.63	\$196.51
500-600 lbs.	\$187.73	\$190.24
600-700 lbs.	\$168.80	\$173.12
700-800 lbs.	\$155.63	\$151.36
800-900 lbs.	\$143.43	\$136.82
900-1000 lbs.	\$138.44	\$128.05

Feeder Heifers M&L 1	This Week	Year Ago
400-500 lbs.	\$170.97	\$176.58
500-600 lbs.	\$169.53	\$160.35
600-700 lbs.	\$148.57	\$146.08
700-800 lbs.	\$135.43	\$133.43
800-900 lbs.	\$133.11	\$123.40
900-1000 lbs.	\$122.28	\$115.67

Weekly M&L 1 500-600 lb. Feeder Steer Price



Weekly M&L 1 800-900 lb. Feeder Steer Price



Nebraska Weekly Hay Prices

[Weekly Hay Report](#)

Squares			Rounds
Alfalfa			
Supreme	LG		
Premium	LG		125.00
Good	LG	150.00-160.00	110.00-140.00
Fair	LG		
Grass			
Premium	SM	160.00-170.00	100.00-110.00
Good	LG		90.00-95.00
Ground & Delivered Alfalfa			150.00-160.00
Ground & Delivered Alf/stover			135.00-140.00

Nebraska Weekly Weighted Average Cattle Report

[lm ct158.txt](#)

	This Week	Last Week	Last Year
Live Str	127.12	126.02	121.43
Live Hfr	127.35	126.06	120.60
Dressed Str	204.96	204.60	189.88
Dressed Hfr	205.00	205.07	190.03

Nebraska Weekly Grain Prices

Omaha-Council Bluffs Grain Bids Bid

US NO 2 YELLOW CORN	3.52-3.59
US NO 1 SOYBEANS	8.34-8.42

Nebraska Ethanol Co-Products Weekly Prices

	Weekly
DDG	135.00-172.00
Modified Wet	66.00-91.00
Wet	40.00-55.00

USDA Livestock, Poultry and Grain Market News
Nebraska

Thomas Walthers, OIC
Phone: (308) 390-5399
Email: Kearney.LPGMN@ams.usda.gov
www.ams.usda.gov/lpsmarketnewspage