

NEBRASKA WEEKLY SUMMARY

Recap For Week Ending

April 6, 2019

Receipts: This Week: 23,126 Week Ago: 15,146 Year Ago: 10,847

Compared to last week steers under 600 lbs sold 4.00 to 6.00 lower, 600-700 lbs sold steady and over 700 lbs sold 2.00 to 4.00 higher. Heifers under 500 lbs sold 2.00 lower, 500-600 lbs sold steady and over 600 lbs sold 2.00 to 4.00 higher. Demand was good at all reporting auctions with several loads of cattle going out of state. Live sales at area feedlots sold mostly steady on the week at 126.00 with a few at 126.50. Dressed sales sold steady to 2.00 lower from 204.00-206.00. This week's supply comprised of 58 percent steers with 71 percent of the run over 600 lbs.

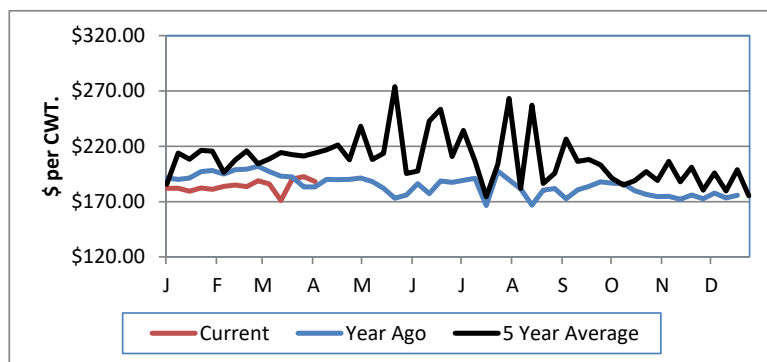
NEBRASKA WEEKLY FEEDER CATTLE AVERAGES

[Auction Summary](#)

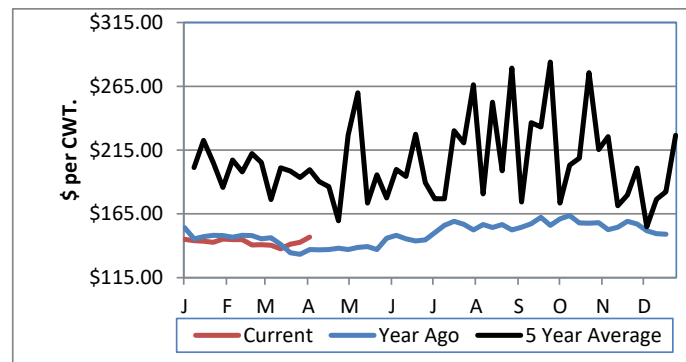
Feeder Steers: M&L 1	This Week	Year Ago
400-500 lbs.	\$196.34	\$188.19
500-600 lbs.	\$186.97	\$183.36
600-700 lbs.	\$172.44	\$171.76
700-800 lbs.	\$155.64	\$150.54
800-900 lbs.	\$147.17	\$136.98
900-1000 lbs.	\$137.26	\$131.50

Feeder Heifers M&L 1	This Week	Year Ago
400-500 lbs.	\$168.00	\$174.39
500-600 lbs.	\$162.27	\$158.34
600-700 lbs.	\$148.04	\$145.99
700-800 lbs.	\$138.73	\$137.01
800-900 lbs.	\$130.67	\$125.23
900-1000 lbs.	\$123.37	\$115.00

Weekly M&L 1 500-600 lb. Feeder Steer Price



Weekly M&L 1 800-900 lb. Feeder Steer Price



Nebraska Weekly Hay Prices

[Weekly Hay Report](#)

Squares

Rounds

Alfalfa			
Supreme	LG		
Premium	LG		
Good	LG	150.00-160.00	110.00-140.00
Fair	LG		

Grass			
Premium	SM	160.00-170.00	100.00-110.00
Good	LG		90.00-95.00

Ground & Delivered Alfalfa 150.00-160.00

Ground & Delivered Alf/stover 135.00-140.00

Nebraska Weekly Weighted Average Cattle Report

[lm_ct158.txt](#)

	This Week	Last Week	Last Year
Live Str	126.02	126.23	115.89
Live Hfr	126.06	126.12	117.24
Dressed Str	204.60	205.86	186.95
Dressed Hfr	205.07	205.98	186.21

Nebraska Weekly Grain Prices

Omaha-Council Bluffs Grain Bids Bid

US NO 2 YELLOW CORN	3.53-3.57
US NO 1 SOYBEANS	8.31-8.45

Nebraska Ethanol Co-Products Weekly Prices

	Weekly
DDG	135.00-188.00
Modified Wet	65.00-93.00
Wet	44.00-55.00

USDA Livestock, Poultry and Grain Market News
Nebraska

Thomas Walthers, OIC
Phone: (308) 390-5399
Email: Kearney.LPGMN@ams.usda.gov
www.ams.usda.gov/lpsmarketnewspage