

KANSAS WEEKLY MARKET RECAP

Recap For Week Ending

April 28, 2023

Receipts: This Week: 7,805 Week Ago: 16,014 Year Ago: 10,746

Compared to last week, feeder steers sold 6.00 to 10.00 higher. Heifers under 600 lbs sold 11.00 to 15.00 higher; over 600 lbs sold 2.00 to 4.00 higher. Slaughter cows sold uneven; breakers and boners steady to 1.00 lower and lean cows 3.00 higher. Slaughter bulls sold steady. Demand was reported as moderate to good throughout the state. Compared to last week, fed slaughter steers and heifers in the feed yards sold 2.00 lower at 173.00. In the hay market: compared to the last report demand remains good, prices remained steady, trade activity remains slow. Dry and windy is repeatedly reported throughout most of the state. New crop pricing is slow to come in, as most are unsure whether they will have much of a hay crop. Corn planting is taking place in the east and central regions while folks are backing off in the west due to the lack of rain.

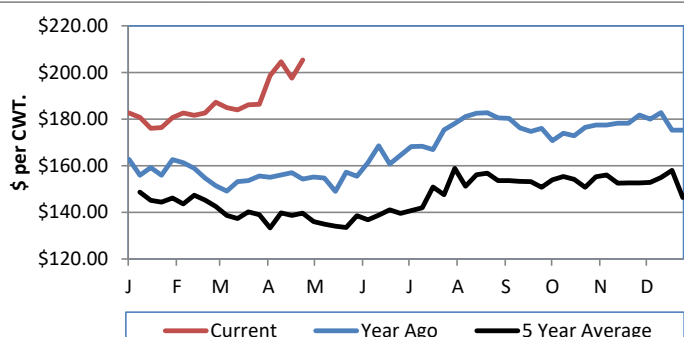
KANSAS WEEKLY FEEDER CATTLE AVERAGES

[Cattle Auction Summary](#)

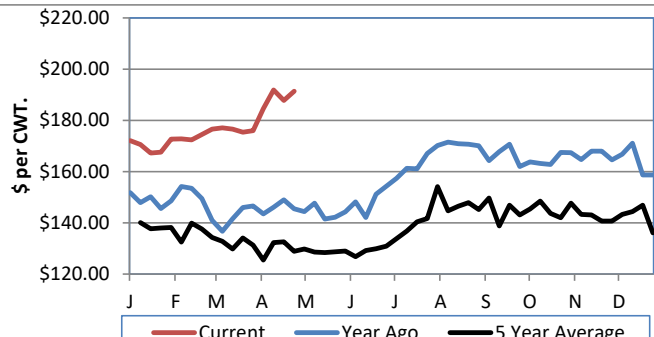
Feeder Steers:	This Week	Last Week	Year Ago
M&L 1			
400-500 lbs.	\$277.03	\$265.92	\$200.73
500-600 lbs.	\$263.08	\$249.04	\$193.34
600-700 lbs.	\$238.98	\$228.13	\$173.02
700-800 lbs.	\$214.62	\$205.91	\$159.99
800-900 lbs.	\$200.53	\$194.54	\$152.16
900-1000 lbs.	\$189.71	\$182.52	\$144.45

Feeder Heifers	This Week	Last Week	Year Ago
M&L 1			
400-500 lbs.	\$247.15	\$233.87	\$173.00
500-600 lbs.	\$231.44	\$220.68	\$162.26
600-700 lbs.	\$201.41	\$198.32	\$154.96
700-800 lbs.	\$191.34	\$187.77	\$145.48
800-900 lbs.	\$179.10	\$177.39	\$140.08
900-1000 lbs.	\$160.88	\$170.63	\$134.46

Weekly M&L 1 700-900 lb. Feeder Steer Price



Weekly M&L 1 700-800 lb. Feeder Heifer Price



KANSAS DIRECT FEEDER CATTLE

[Fdr Cattle Direct Summary](#)

Medium and Large 1 (Current FOB)

SteersHeifers

600-700 lbs.	NQ	NQ
700-800 lbs.	NQ	182.00-191.00
800-900 lbs.	197.00	175.92

KANSAS WEEKLY SLAUGHTER CATTLE

[Cattle Auction Summary](#)

Slaughter Cows

	<u>Average</u>	<u>High</u>	<u>Low</u>
Dressing			
Prem White	NQ	NQ	NQ
Breakers	94.14	105.69	NQ
Boners	85.79	NQ	NQ
Lean	77.16	NQ	NQ

Slaughter Bulls

	<u>Average</u>	<u>High</u>	<u>Low</u>
YG 1-2	113.32	120.14	100.67

KANSAS WEEKLY WTD AVG

[KS WEEKLY SLAUGHTER CATTLE](#)

SLAUGHTER CATTLE REPORT

	<u>This Week</u>	<u>Last Week</u>	<u>Last Year</u>
Live Str	\$172.89	\$174.64	\$140.00
Live Hfr	\$173.00	\$174.51	\$140.01
Dressed Str	\$282.42	\$276.00	\$231.37
Dressed Hfr	\$286.79	\$286.00	\$232.00

KANSAS WEEKLY GRAIN BIDS

[Kansas Grain Bids](#)

	<u>Terminal Elevators</u>	<u>Country Elevators</u>
US NO 1 HR Winter Wheat	7.2875-8.2800	7.2525-8.0300
US NO 2 Yellow Corn	6.2150-7.2425	6.4150-7.7625
US NO 2 Sorghum	6.0650-6.9125	6.0150-6.9125
US NO 2 Soybeans	13.7375-14.6525	13.2875-14.3525
Sunflower - Oilseeds (country elevators)		15.00
Cotton - West Texas		76.80

KANSAS WEEKLY ETHANOL BIDS

[Ethanol Summary](#)

DDG	255.00-295.00
Modified Wet	NQ
Wet	110.00-118.00

KANSAS WEEKLY HAY PRICES

[Kansas Hay](#)

	<u>Southwest KS</u>	<u>South Central KS</u>
Alfalfa (Dairy)		
Supreme	NQ	NQ
Premium	300.00-350.00	325.00
Ground & Delivered	330.00-350.00	295.00-340.00

USDA Livestock Poultry and Grain Market News

St Joseph, MO

Phone: (816) 676-7000

Email: stjoe.lpgmn@usda.gov

<http://www.ams.usda.gov/lpsmarketnewspage>