

KANSAS WEEKLY MARKET RECAP

Recap For Week Ending

April 7, 2023

Receipts: This Week: 9,495 Week Ago: 11,371 Year Ago: 11,390

Compared to last week, feeder steers overall sold 9.00 to 11.00 higher. Feeder heifers overall sold 6.00 to 8.00 higher. Slaughter cows sold steady to 2.00 lower. Slaughter bulls sold 4.00 to 5.00 higher. Demand was reported as good throughout the state. Compared to last week, fed slaughter steers and heifers in the feed yards sold 3.00 higher at 170.00. In the hay market, demand remains good, prices remained steady, trade activity remains slow. Drought continues to be the main topic on everyone's mind these days, especially for those in central and southwest Kansas. Winter wheat did not come up across much of that area and significant precipitation is needed over the next few weeks.

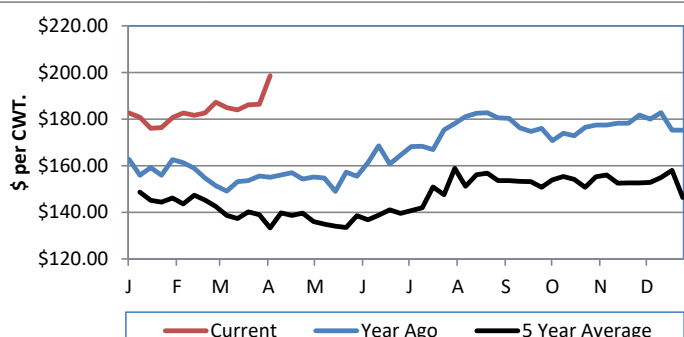
KANSAS WEEKLY FEEDER CATTLE AVERAGES

[Cattle Auction Summary](#)

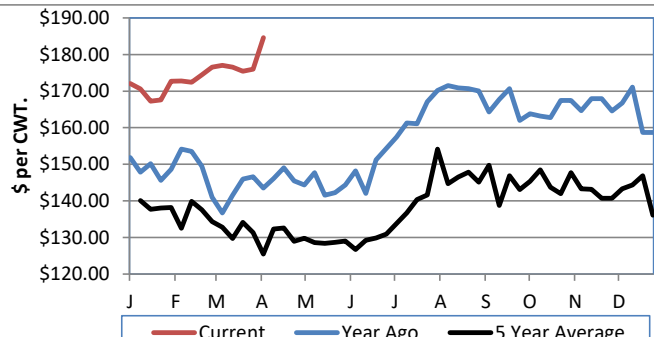
Feeder Steers:	This Week	Last Week	Year Ago
M&L 1			
400-500 lbs.	\$252.76	\$241.00	\$210.64
500-600 lbs.	\$242.03	\$239.21	\$192.93
600-700 lbs.	\$229.43	\$219.65	\$177.32
700-800 lbs.	\$206.55	\$191.53	\$159.98
800-900 lbs.	\$193.73	\$184.70	\$152.04
900-1000 lbs.	\$182.28	\$180.52	\$141.43

Feeder Heifers	This Week	Last Week	Year Ago
M&L 1			
400-500 lbs.	\$235.80	\$215.18	\$174.91
500-600 lbs.	\$221.59	\$205.61	\$167.16
600-700 lbs.	\$207.44	\$190.73	\$155.43
700-800 lbs.	\$184.60	\$175.98	\$143.49
800-900 lbs.	\$175.00	\$171.31	\$136.19
900-1000 lbs.	\$171.14	\$164.73	\$135.66

Weekly M&L 1 700-900 lb. Feeder Steer Price



Weekly M&L 1 700-800 lb. Feeder Heifer Price



KANSAS DIRECT FEEDER CATTLE

[Fdr Cattle Direct Summary](#)

Medium and Large 1 (Current FOB)

	Steers	Heifers
600-700 lbs.	NQ	NQ
700-800 lbs.	NQ	174.00-178.00
800-900 lbs.	189.00	170.00-172.00

KANSAS WEEKLY GRAIN BIDS

[Kansas Grain Bids](#)

	Terminal Elevators	Country Elevators
US NO 1 HR Winter Wheat	8.1150-8.7025	8.1150-8.4525
US NO 2 Yellow Corn	6.5975-7.3075	6.8350-7.9775
US NO 2 Sorghum	6.4850-6.9775	6.4350-7.0275
US NO 2 Soybeans	14.3250-15.3700	13.8750-14.9700
Sunflower - Oilseeds (country elevators)		NQ
Cotton - West Texas		79.70

KANSAS WEEKLY SLAUGHTER CATTLE

[Cattle Auction Summary](#)

Slaughter Cows

	Average	High	Low
Dressing			
Prem White	NQ	NQ	NQ
Breakers	95.73	102.51	NQ
Boners	86.19	NQ	92.18
Lean	73.65	NQ	NQ

Slaughter Bulls

	Average	High	Low
YG 1-2	113.88	122.81	100.83

KANSAS WEEKLY ETHANOL BIDS

[Ethanol Summary](#)

DDG	260.00-310.00
Modified Wet	NQ
Wet	100.00-120.00

KANSAS WEEKLY HAY PRICES

[Kansas Hay](#)

	Southwest KS	South Central KS
Alfalfa (Dairy)		
Supreme	NQ	NQ
Premium	300.00-350.00	NQ
Ground & Delivered	330.00-350.00	295.00-340.00

KANSAS WEEKLY WTD AVG

[KS WEEKLY SLAUGHTER CATTLE](#)

SLAUGHTER CATTLE REPORT

	This Week	Last Week	Last Year
Live Str	\$170.12	\$167.05	\$137.76
Live Hfr	\$170.57	\$167.31	\$137.78
Dressed Str	\$276.28	\$270.68	\$221.01
Dressed Hfr	\$275.39	NQ	NQ

USDA Livestock Poultry and Grain Market News

St Joseph, MO

Phone: (816) 676-7000

Email: stjoe.lpgmn@usda.gov

<http://www.ams.usda.gov/lpsmarketnewspage>