

KANSAS WEEKLY MARKET RECAP

Recap For Week Ending

March 31, 2023

Receipts: This Week: 11,371 Week Ago: 12,628 Year Ago: 12,552

Compared to last week, feeder steers under 700 lbs sold 9.00 to 10.00 higher; 700 to 800 lbs 1.00 to 2.00 lower; over 800 lbs 1.00 to 4.00 higher. Feeder heifers overall sold steady to 4.00 higher. Slaughter cows overall sold sharply lower. Slaughter bulls sold 3.00 to 5.00 lower. Demand was reported as good throughout the state. Compared to last week, fed slaughter steers and heifers in the feed yards sold mostly 4.00 higher at 167.00, with a few up to 171.00. In the hay market, demand remains good, prices remained steady, trade activity remains slow, although trades did pick up a bit last week. Overall, reports have come in that there has been more hay offered for sale by cattlemen, but they remain cautious, only turning loose of a few loads here and there. Southwest contributors state that they are in serious trouble as the drought stubbornly hangs on.

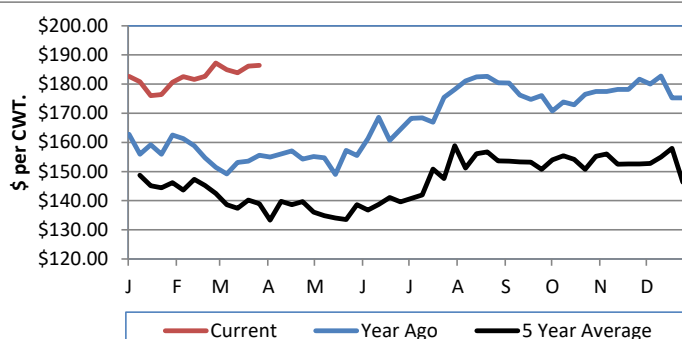
KANSAS WEEKLY FEEDER CATTLE AVERAGES

[Cattle Auction Summary](#)

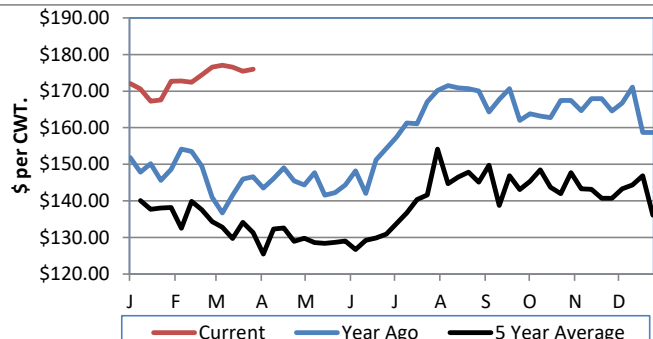
Feeder Steers:	This Week	Last Week	Year Ago
M&L 1			
400-500 lbs.	\$241.00	\$246.63	\$215.13
500-600 lbs.	\$239.21	\$229.65	\$201.67
600-700 lbs.	\$219.65	\$209.94	\$185.05
700-800 lbs.	\$191.53	\$192.99	\$161.23
800-900 lbs.	\$184.70	\$181.11	\$152.76
900-1000 lbs.	\$180.52	\$179.55	\$146.38

Feeder Heifers	This Week	Last Week	Year Ago
M&L 1			
400-500 lbs.	\$215.18	\$223.39	\$183.11
500-600 lbs.	\$205.61	\$205.43	\$176.27
600-700 lbs.	\$190.73	\$183.61	\$158.39
700-800 lbs.	\$175.98	\$175.40	\$146.60
800-900 lbs.	\$171.31	\$168.56	\$140.08
900-1000 lbs.	\$164.73	\$160.75	\$135.02

Weekly M&L 1 700-900 lb. Feeder Steer Price



Weekly M&L 1 700-800 lb. Feeder Heifer Price



KANSAS DIRECT FEEDER CATTLE

[Fdr Cattle Direct Summary](#)

Medium and Large 1 (Current FOB)

SteersHeifers

600-700 lbs.	NQ	NQ
700-800 lbs.	NQ	174.50
800-900 lbs.	177.50-182.67	NQ

KANSAS WEEKLY SLAUGHTER CATTLE

[Cattle Auction Summary](#)

Slaughter Cows

	<u>Average</u>	<u>High</u>	<u>Low</u>
Prem White	NQ	NQ	NQ
Breakers	94.98	102.70	NQ
Boners	87.98	NQ	92.18
Lean	76.03	NQ	NQ

Slaughter Bulls

	<u>Average</u>	<u>High</u>	<u>Low</u>
YG 1-2	109.37	117.22	98.37

KANSAS WEEKLY WTD AVG

[KS WEEKLY SLAUGHTER CATTLE](#)

SLAUGHTER CATTLE REPORT

	<u>This Week</u>	<u>Last Week</u>	<u>Last Year</u>
Live Str	\$167.05	\$162.99	\$137.99
Live Hfr	\$167.31	\$162.96	\$138.00
Dressed Str	\$270.68	\$265.00	\$222.00
Dressed Hfr	NQ	NQ	NQ

KANSAS WEEKLY GRAIN BIDS

[Kansas Grain Bids](#)

	<u>Terminal Elevators</u>	<u>Country Elevators</u>
US NO 1 HR Winter Wheat	8.1025-8.7275	8.1025-8.4775
US NO 2 Yellow Corn	6.6225-7.3350	6.8725-8.0050
US NO 2 Sorghum	6.5225-7.0050	6.4725-7.0550
US NO 2 Soybeans	14.0225-15.2550	13.6725-14.8050
Sunflower - Oilseeds (country elevators)		NQ
Cotton - West Texas		79.28

KANSAS WEEKLY ETHANOL BIDS

[Ethanol Summary](#)

DDG	258.00-280.00
Modified Wet	NQ
Wet	100.00-115.00

KANSAS WEEKLY HAY PRICES

[Kansas Hay](#)

	<u>Southwest KS</u>	<u>South Central KS</u>
Alfalfa (Dairy)		
Supreme	NQ	NQ
Premium	300.00-350.00	325.00
Ground & Delivered	330.00-350.00	295.00-340.00

USDA Livestock Poultry and Grain Market News

St Joseph, MO

Phone: (816) 676-7000

Email: stjoe.lpgmn@usda.gov

<http://www.ams.usda.gov/lpsmarketnewspage>