

KANSAS WEEKLY MARKET RECAP

Recap For Week Ending:

May 4, 2019

Receipts: This Week: 7,641 Week Ago: 12,432 Year Ago: 11,416

Compared to last week: Feeder steers uneven, 1.00 to 4.00 lower, instances 7.00 to 9.00 lower. Feeder heifers uneven, 5.00 lower to 2.00 higher. Steer and heifer calves not well tested, a lower undertone noted. Slaughter cows uneven, 1.00 lower to 2.00 higher. Slaughter bulls steady to 1.00 lower. Compared to last week, Direct Feeder steers and heifers too lightly tested last week for a trend. For the week in Kansas, the bulk of the live cash trades moved 3.00 to 4.00 lower from 122.00 to 123.00. For the week, a few dressed trades moved at 200.00.

KANSAS WEEKLY FEEDER CATTLE AVERAGES

[Cattle Auction Summary](#)

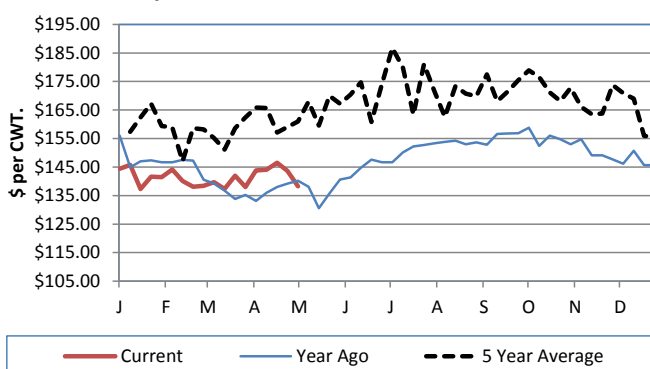
Feeder Steers (M&L 1)

	This Week	Last Week	Year Ago
400-500 lbs.	\$185.60	\$192.09	\$188.27
500-600 lbs.	\$170.05	\$179.88	\$177.56
600-700 lbs.	\$163.79	\$172.16	\$164.70
700-800 lbs.	\$144.63	\$150.29	\$147.23
800-900 lbs.	\$134.53	\$141.94	\$137.14
900-1000 lbs.	\$125.15	\$129.45	\$127.75

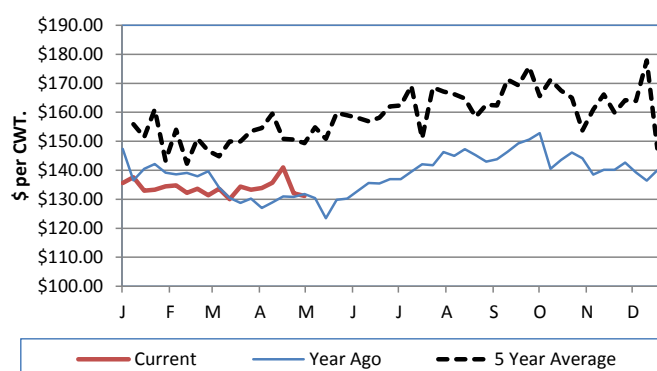
Feeder Heifers (M&L 1)

	This Week	Last Week	Year Ago
400-500 lbs.	\$152.79	\$167.44	\$175.53
500-600 lbs.	\$148.08	\$156.13	\$155.02
600-700 lbs.	\$143.19	\$144.34	\$145.30
700-800 lbs.	\$131.17	\$132.05	\$131.81
800-900 lbs.	\$125.32	\$128.82	\$123.13
900-1000 lbs.	NQ	\$123.54	\$120.15

Weekly M&L 1 700-900 lb. Feeder Steer Price



Weekly M&L 1 700-800 lb. Feeder Heifer Price



KANSAS DIRECT FEEDER CATTLE

[DC LS165](#)

(Current FOB)

	Steers	Heifers
600-700 lbs.	NQ	NQ
700-800 lbs.	NQ	130.65-139.00
800-900 lbs.	NQ	NQ

KANSAS WEEKLY GRAIN BIDS

	Central KS	Western KS
US NO 1 HR Winter Wheat	3.6125-4.00	3.40-3.76
US NO 2 Yellow Corn	3.19-3.8075	3.12-3.61
US NO 2 Sorghum	5.09-6.44	4.86-5.46
US NO 2 Soybeans	3.8625-3.97	6.87-7.24
Sunflower - Oilseeds (Goodland)	16.50	
Cotton - West Texas	69.18	

KANSAS WEEKLY SLAUGHTER CATTLE

[Cattle Auction Summary](#)

Slaughter Cows

	Average	High	Low
Prem White	0.00	0.00	0.00
Breakers	64.64	0.00	57.00
Boners	58.28	63.13	52.78
Lean	46.65	54.09	35.61

Slaughter Bulls

	Average	High	Low
YG 1-2	78.30	86.95	68.00

KANSAS WEEKLY WTD AVG CATTLE REPORT

[LM CT157](#)

	This Week	Last Week	Last Year
Live Str	\$122.36	\$125.63	\$125.68
Live Hfr	\$122.26	\$125.57	\$125.53
Dressed Str	\$198.40	\$205.00	\$199.11
Dressed Hfr	\$199.30	NQ	\$195.00

KANSAS WEEKLY ETHANOL BIDS

[NW GR115](#)

DDG	125.00-155.00
Modified Wet	NQ
Wet	50.00-64.00

KANSAS WEEKLY HAY PRICES

[DC GR310](#)

	Southwest KS	South Central KS
Alfalfa (Dairy)		
Supreme	185.00-210.00	195.00-215.00
Premium	170.00-195.00	175.00-200.00
Ground & Delivered	195.00-205.00	175.00-185.00

USDA Livestock Poultry and Grain Market News

Dodge City, KS

Phone: (620) 227-8881

Email: dodgecity.lpgmn@ams.usda.gov

<http://www.ams.usda.gov/lpsmarketnewspage>