

KANSAS WEEKLY MARKET RECAP

*** Correction to Heifers ***

Recap For Week Ending:

April 27, 2019

Receipts: This Week: 12,432 Week Ago: 10,278 Year Ago: 14,679

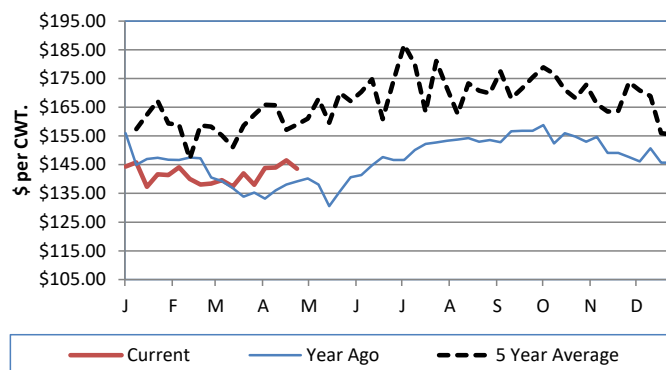
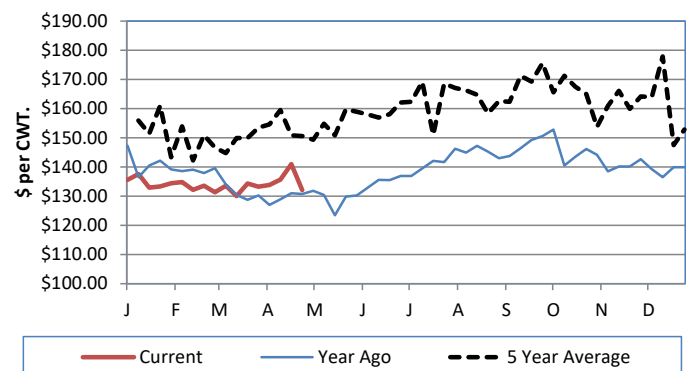
Compared to last week: Feeder steers and heifers over 500 lbs mostly 3.00 to 6.00 lower. Steer and heifer calves under 500 lbs mostly steady. Slaughter cows steady to 2.00 higher. Slaughter bulls steady to 3.00 higher. Compared to last week, Direct Feeder steers and heifers too lightly tested for a trend. For the week in Kansas, negotiated cash live trades were steady at 126.00.

KANSAS WEEKLY FEEDER CATTLE AVERAGES
[Cattle Auction Summary](#)
Feeder Steers (M&L 1)

	<u>This Week</u>	<u>Last Week</u>	<u>Year Ago</u>
400-500 lbs.	\$192.09	\$194.82	\$188.71
500-600 lbs.	\$179.88	\$184.88	\$176.10
600-700 lbs.	\$172.16	\$172.74	\$163.27
700-800 lbs.	\$150.29	\$153.70	\$146.60
800-900 lbs.	\$141.94	\$143.08	\$136.21
900-1000 lbs.	\$129.45	\$136.59	\$129.90

Feeder Heifers (M&L 1)

	<u>This Week</u>	<u>Last Week</u>	<u>Year Ago</u>
400-500 lbs.	\$167.44	\$169.38	\$167.85
500-600 lbs.	\$156.13	\$158.31	\$154.73
600-700 lbs.	\$144.34	\$145.20	\$143.29
700-800 lbs.	\$132.05	\$140.99	\$130.78
800-900 lbs.	\$128.82	\$131.95	\$123.16
900-1000 lbs.	\$123.54	\$126.97	\$117.53

Weekly M&L 1 700-900 lb. Feeder Steer Price

Weekly M&L 1 700-800 lb. Feeder Heifer Price

KANSAS DIRECT FEEDER CATTLE
[DC LS165](#)

(Current FOB)

	<u>Steers</u>	<u>Heifers</u>
600-700 lbs.	NQ	NQ
700-800 lbs.	NQ	136.00-137.00
800-900 lbs.	141.13	128.90

KANSAS WEEKLY GRAIN BIDS

	<u>Central KS</u>	<u>Western KS</u>
US NO 1 HR Winter Wheat	3.7475-4.245	3.50-3.93
US NO 2 Yellow Corn	3.0875-3.6975	3.07-3.51
US NO 2 Sorghum	5.00-6.25	4.76-5.35
US NO 2 Soybeans	7.4375-8.17	7.04-7.47
Sunflower - Oilseeds (Goodland)	16.55	
Cotton - West Texas	71.45	

KANSAS WEEKLY SLAUGHTER CATTLE
[Cattle Auction Summary](#)
Slaughter Cows

	<u>Average</u>	<u>High</u>	<u>Low</u>
Prem White	NQ	NQ	NQ
Breakers	67.01	NQ	NQ
Boners	57.57	65.04	52.69
Lean	53.05	56.45	48.00

Slaughter Bulls

	<u>Average</u>	<u>High</u>	<u>Low</u>
YG 1-2	78.43	87.98	66.00

KANSAS WEEKLY ETHANOL BIDS
[NW GR115](#)

DDG	130.00-185.00
Modified Wet	NQ
Wet	55.00-71.00

KANSAS WEEKLY HAY PRICES
[DC GR310](#)

	<u>Southwest KS</u>	<u>South Central KS</u>
Alfalfa (Dairy)		
Supreme	185.00-210.00	195.00-215.00
Premium	170.00-195.00	175.00-200.00
Ground & Delivered	195.00-205.00	175.00-185.00

KANSAS WEEKLY WTD AVG CATTLE REPORT
[LM CT157](#)

	<u>This Week</u>	<u>Last Week</u>	<u>Last Year</u>
Live Str	\$125.63	\$126.01	\$123.15
Live Hfr	\$125.57	\$126.10	\$122.72
Dressed Str	\$205.00	\$201.00	\$197.00
Dressed Hfr	NQ	\$205.00	NQ

USDA Livestock Poultry and Grain Market News

Dodge City, KS

Phone: (620) 227-8881

 Email: dodgecity.lpgmn@ams.usda.gov
<http://www.ams.usda.gov/lpsmarketnewspage>