

KANSAS WEEKLY SUMMARY

Recap For Week Ending:

April 20, 2019

Receipts: This Week: 10,278 Week Ago: 12,844 Year Ago: 11,574

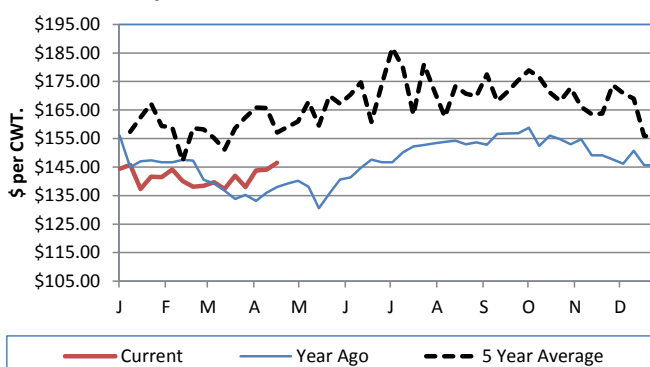
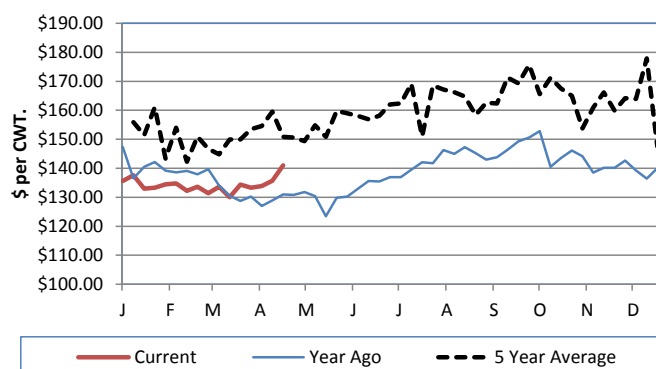
Compared to last week: Feeder steers unevenly steady to 4.00 higher, instances up to 6.00 higher. Feeder heifers uneven, 2.00 lower to 5.00 higher. Steer calves uneven, 2.00 to 10.00 higher. Heifer calves uneven, steady to 10.00 higher. Slaughter cows steady to 1.00 higher. Slaughter bulls firm to 2.00 lower. Compared to last week, Direct Feeder steers traded 1.00 to 4.00 higher, heifers last week were to lightly tested for a trend. For the week in Kansas, negotiated cash live trades were 2.00 higher at 126.00.

KANSAS WEEKLY FEEDER CATTLE AVERAGES[Auction Summary](#)**Feeder Steers (M&L 1)**

	<u>This Week</u>	<u>Last Week</u>	<u>Year Ago</u>
400-500 lbs.	\$194.82	\$192.26	\$189.49
500-600 lbs.	\$184.88	\$177.91	\$173.87
600-700 lbs.	\$172.74	\$163.55	\$159.81
700-800 lbs.	\$153.70	\$152.34	\$142.95
800-900 lbs.	\$143.08	\$139.62	\$136.37
900-1000 lbs.	\$136.59	\$132.55	\$126.31

Feeder Heifers (M&L 1)

	<u>This Week</u>	<u>Last Week</u>	<u>Year Ago</u>
400-500 lbs.	\$169.38	\$169.60	\$163.43
500-600 lbs.	\$158.31	\$158.64	\$149.56
600-700 lbs.	\$145.20	\$142.55	\$145.00
700-800 lbs.	\$140.99	\$135.69	\$130.99
800-900 lbs.	\$131.95	\$129.46	\$124.66
900-1000 lbs.	\$126.97	\$121.72	\$117.53

Weekly M&L 1 700-900 lb. Feeder Steer Price**Weekly M&L 1 700-800 lb. Feeder Heifer Price****KANSAS DIRECT FEEDER CATTLE**[DC LS165](#)

(Current FOB)

	<u>Steers</u>	<u>Heifers</u>
600-700 lbs.	NQ	NQ
700-800 lbs.	145.00	132.00
800-900 lbs.	140.50-143.00	132.00

KANSAS WEEKLY GRAIN BIDS

	<u>Central KS</u>	<u>Western KS</u>
US NO 1 HR Winter Wheat	3.95-4.3725	3.67-4.05
US NO 2 Yellow Corn	3.2025-3.6975	3.18-3.58
US NO 2 Sorghum	5.20-6.39	4.97-5.50
US NO 2 Soybeans	7.69-8.3875	7.28-7.74
Sunflower - Oilseeds (Goodland)	16.65	
Cotton - West Texas	72.22	

WINTER LIVESTOCK AUCTION[DC LS750](#)**Slaughter Cows**

	<u>Average</u>	<u>High</u>	<u>Low</u>
Prem White	NQ	NQ	NQ
Breakers	63.50-69.00	NQ	NQ
Boners	52.00-57.50	56.50-60.00	52.00
Lean	41.00-44.00	49.00-51.00	27.00-32.00

Slaughter Bulls

	<u>Average</u>	<u>High</u>	<u>Low</u>
YG 1-2	72.50-79.00	80.00-82.50	NQ

KANSAS WEEKLY WTD AVG CATTLE REPORT[LM CT157](#)

	<u>This Week</u>	<u>Last Week</u>	<u>Last Year</u>
Live Str	\$126.01	\$124.10	\$121.82
Live Hfr	\$126.10	\$123.97	\$121.04
Dressed Str	\$201.00	NQ	\$192.92
Dressed Hfr	\$205.00	NQ	\$195.00

KANSAS WEEKLY ETHANOL BIDS[NW GR115](#)

DDG	135.00-185.00
Modified Wet	NQ
Wet	55.00-71.00

KANSAS WEEKLY HAY PRICES[DC GR310](#)

	<u>Southwest KS</u>	<u>South Central KS</u>
Alfalfa (Dairy)		
Supreme	185.00-210.00	195.00-215.00
Premium	170.00-195.00	175.00-200.00
Ground & Delivered	195.00-205.00	175.00-185.00

USDA Livestock Poultry and Grain Market News

Dodge City, KS

Phone: (620) 227-8881

Email: dodgecity.lpgmn@ams.usda.gov<http://www.ams.usda.gov/lpsmarketnewspage>