

# KANSAS WEEKLY SUMMARY

Recap For Week Ending:

April 13, 2019

Receipts: This Week: 12,844 Week Ago: 11,906 Year Ago: 12,312

Compared to last week: Feeder steers uneven, bulk of the trade 2.00 to 5.00 higher, instances 7.00 to 8.00 higher. Feeder heifers unevenly steady to 5.00 higher. Steer calves unevenly steady to 4.00 higher, instances 1.00 lower. Heifer calves unevenly steady to 3.00 higher. Slaughter cows steady to 3.00 higher. Slaughter bulls steady to 2.00 higher. Compared to last week, Direct Feeder steers and heifers traded steady on a limited test this week on a Current FOB Basis. For the week in Kansas, negotiated cash live trades were steady at 124.00.

## KANSAS WEEKLY FEEDER CATTLE AVERAGES

[Auction Summary](#)

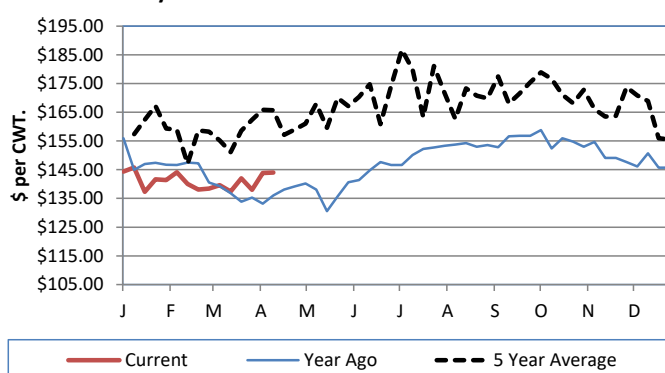
### Feeder Steers (M&L 1)

	This Week	Last Week	Year Ago
400-500 lbs.	\$192.26	\$182.20	\$187.50
500-600 lbs.	\$177.91	\$178.60	\$173.30
600-700 lbs.	\$163.55	\$166.57	\$162.35
700-800 lbs.	\$152.34	\$150.59	\$145.54
800-900 lbs.	\$139.62	\$139.26	\$134.27
900-1000 lbs.	\$132.55	\$135.98	\$125.06

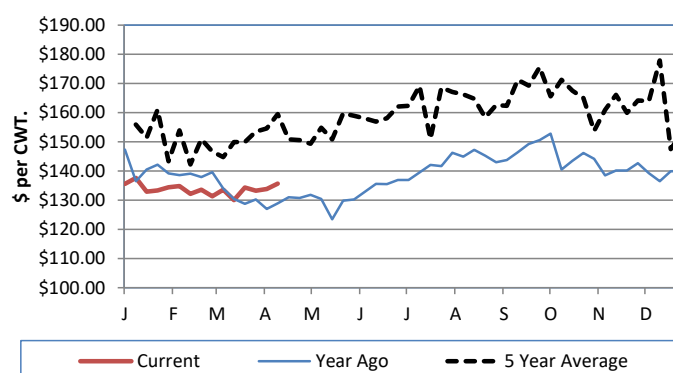
### Feeder Heifers (M&L 1)

	This Week	Last Week	Year Ago
400-500 lbs.	\$169.60	\$161.63	\$166.63
500-600 lbs.	\$158.64	\$156.36	\$162.34
600-700 lbs.	\$142.55	\$139.24	\$140.47
700-800 lbs.	\$135.69	\$133.87	\$128.88
800-900 lbs.	\$129.46	\$128.22	\$120.93
900-1000 lbs.	\$121.72	\$122.71	\$117.14

Weekly M&L 1 700-900 lb. Feeder Steer Price



Weekly M&L 1 700-800 lb. Feeder Heifer Price



## KANSAS DIRECT FEEDER CATTLE

[DC LS165](#)

(Current FOB)

	Steers	Heifers
600-700 lbs.	NQ	NQ
700-800 lbs.	NQ	131.50-135.00
800-900 lbs.	136.00-141.00	NQ

## KANSAS WEEKLY GRAIN BIDS

	Central KS	Western KS
US NO 1 HR Winter Wheat	4.0525-4.4425	3.76-4.12
US NO 2 Yellow Corn	3.17-3.68	3.20-3.57
US NO 2 Sorghum	5.18-6.37	5.00-5.48
US NO 2 Soybeans	7.8525-8.42	7.44-7.77
Sunflower - Oilseeds (Goodland)	16.65	
Cotton - West Texas	71.86	

## WINTER LIVESTOCK AUCTION

[DC LS750](#)

Slaughter Cows

	Average	High	Low
Prem White	NQ	NQ	NQ
Breakers	62.00-68.00	NQ	NQ
Boners	51.50-57.00	56.50-61.50	49.00-51.50
Lean	44.00-47.00	51.00	37.00

Slaughter Bulls

	Average	High	Low
YG 1-2	72.50-78.50	78.00	58.00-66.50

## KANSAS WEEKLY ETHANOL BIDS

[NW GR115](#)

DDG	145.00-185.00
Modified Wet	NQ
Wet	55.00-71.00

## KANSAS WEEKLY HAY PRICES

[DC GR310](#)

	Southwest KS	South Central KS
Alfalfa (Dairy)		
Supreme	185.00-210.00	195.00-215.00
Premium	170.00-195.00	175.00-200.00
Ground & Delivered	195.00-205.00	175.00-185.00

## KANSAS WEEKLY WTD AVG CATTLE REPORT

[LM CT157](#)

	This Week	Last Week	Last Year
Live Str	\$124.10	\$123.91	\$118.33
Live Hfr	\$123.97	\$123.90	\$117.79
Dressed Str	NQ	\$200.55	\$190.00
Dressed Hfr	NQ	\$204.00	\$190.00

## USDA Livestock Poultry and Grain Market News

Dodge City, KS

Phone: (620) 227-8881

Email: [dodgecity.lpgmn@ams.usda.gov](mailto:dodgecity.lpgmn@ams.usda.gov)

<http://www.ams.usda.gov/lpsmarketnewspage>