

KANSAS WEEKLY SUMMARY

Recap For Week Ending:

April 6, 2019

Receipts: This Week: 11,906 Week Ago: 13,519 Year Ago: 8,677

Compared to last week: Feeder steers uneven, bulk of the trade 2.00 to 5.00 higher, instances 6.00 to 12.00 higher. Feeder heifers uneven, bulk of the trade steady to 2.00 lower, instances 3.00 to 4.00 higher. Steer calves unevenly steady to 3.00 higher. Heifer calves 2.00 to 4.00 lower, one sale a higher undertone. Slaughter cows firm to 5.00 lower. Slaughter bulls 2.00 to 3.00 higher. Compared to last week, Direct Feeder steers and heifers sold 1.00-2.00 higher on a limited test this week on a Current FOB Basis. For the week in Kansas, live purchases moved 1.00 to 2.00 lower at 124.00.

KANSAS WEEKLY FEEDER CATTLE AVERAGES

[Auction Summary](#)

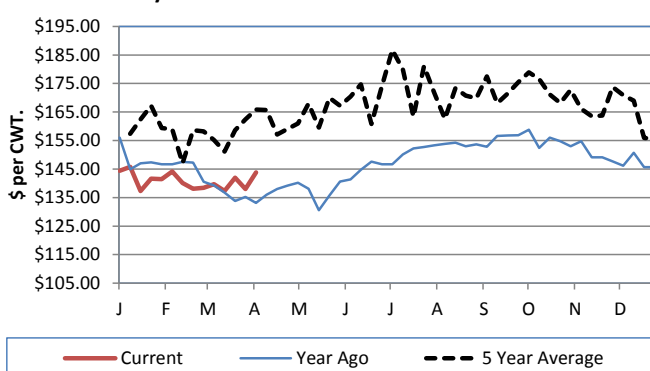
Feeder Steers (M&L 1)

	This Week	Last Week	Year Ago
400-500 lbs.	\$182.20	\$184.66	\$181.12
500-600 lbs.	\$178.60	\$179.32	\$171.07
600-700 lbs.	\$166.57	\$164.07	\$159.65
700-800 lbs.	\$150.59	\$144.28	\$144.22
800-900 lbs.	\$139.26	\$135.68	\$130.65
900-1000 lbs.	\$135.98	\$127.85	\$125.01

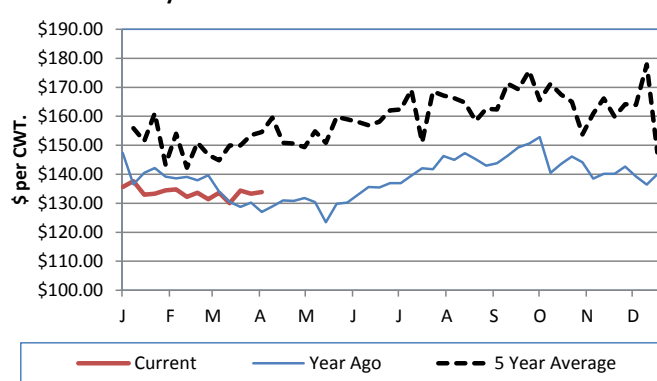
Feeder Heifers (M&L 1)

	This Week	Last Week	Year Ago
400-500 lbs.	\$161.63	\$160.97	\$157.05
500-600 lbs.	\$156.36	\$154.54	\$157.61
600-700 lbs.	\$139.24	\$141.36	\$145.03
700-800 lbs.	\$133.87	\$133.27	\$127.02
800-900 lbs.	\$128.22	\$127.93	\$118.94
900-1000 lbs.	\$122.71	\$117.24	\$115.72

Weekly M&L 1 700-900 lb. Feeder Steer Price



Weekly M&L 1 700-800 lb. Feeder Heifer Price



KANSAS DIRECT FEEDER CATTLE

[DC LS165](#)

(Current FOB)

	Steers	Heifers
600-700 lbs.	NQ	144.00
700-800 lbs.	NQ	130.00-131.00
800-900 lbs.	133.05-141.50	125.08

KANSAS WEEKLY GRAIN BIDS

	Central KS	Western KS
US NO 1 HR Winter Wheat	4.0525-4.495	3.76-4.18
US NO 2 Yellow Corn	3.185-3.7025	3.22-3.60
US NO 2 Sorghum	5.21-6.43	5.03-5.54
US NO 2 Soybeans	7.855-8.465	7.45-7.82
Sunflower - Oilseeds (Goodland)	16.65	
Cotton - West Texas	72.00	

WINTER LIVESTOCK AUCTION

[DC LS750](#)

Slaughter Cows

	Average	High	Low
Prem White	NQ	NQ	NQ
Breakers	63.50-66.50	NQ	NQ
Boners	50.50-56.00	56.00-62.00	48.00-50.00
Lean	45.00-49.00	46.00-47.50	NQ

Slaughter Bulls

	Average	High	Low
YG 1-2	71.00-76.50	NQ	61.50-66.50

KANSAS WEEKLY WTD AVG CATTLE REPORT

[LM CT157](#)

	This Week	Last Week	Last Year
Live Str	\$123.91	\$125.35	\$117.35
Live Hfr	\$123.90	\$125.55	\$117.51
Dressed Str	\$200.55	\$206.00	\$186.31
Dressed Hfr	\$204.00	NQ	\$186.00

KANSAS WEEKLY ETHANOL BIDS

[NW GR115](#)

DDG	145.00-185.00
Modified Wet	NQ
Wet	55.00-65.00

KANSAS WEEKLY HAY PRICES

[DC GR310](#)

	Southwest KS	South Central KS
Alfalfa (Dairy)		
Supreme	185.00-210.00	195.00-215.00
Premium	170.00-195.00	175.00-200.00
Ground & Delivered	195.00-205.00	175.00-185.00

USDA Livestock Poultry and Grain Market News

Dodge City, KS

Phone: (620) 227-8881

Email: dodgecity.lpgmn@ams.usda.gov

<http://www.ams.usda.gov/lpsmarketnewspage>