



National Weekly Cow and Boneless Beef Summary

Agricultural Marketing Service
Livestock, Poultry, and Grain Market News

May 3, 2019

Boneless Processing Beef and Beef Trimmings					100% Lean Items			
National			Central		LM XB 461	Loads	Wtd Avg	Change
LM XB 460	Loads	Wtd Avg	Loads	Wtd Avg				
Fresh 92-94%	4.9	230.20	4.3	230.03	Cutter Cow Carcass Cutout		171.88	0.92
Fresh 90%	60.4	222.53	49.9	222.17	Inside Rounds - Boxed	3.9	287.91	6.65
Fresh 85%	53.3	199.75	40.1	199.46	Outside Rounds	0.0	0.00	0.00
Fresh 81%	6.8	184.26	6.8	184.26	Eye of Rounds	1.8	261.18	4.59
Fresh 65%	17.8	116.10	9.0	116.08	Flats and Eyes - Combos	4.4	237.39	0.51
Fresh 50%	78.0	86.49			Striploins	4.7	348.31	1.14
					S.P.B. - Combo	4.1	231.50	(1.11)

Ground Beef			
LM XB 459		Loads	Wtd Avg
Fresh 73%		15.2	178.44
Fresh 81%		33.7	187.95
Fresh 93%		3.7	302.45
Ground Chuck		11.1	204.8
Ground Round		1.3	249.5
Ground Sirloin		0.2	301.0
Steer/Heifer/Cow Ground Beef			
Fresh 81%		24.1	200.8
Fresh 93%		0.0	307.9
Ground Chuck		1.9	216.7

Cow By-Product Drop Estimate	
NW LS 444	
CWT Live	7.45
CWT Dressed	15.85

Canadian Live Cow Prices	
WA LS 718	Prices in US Dollars
Ontario	53.04
Alberta	69.29

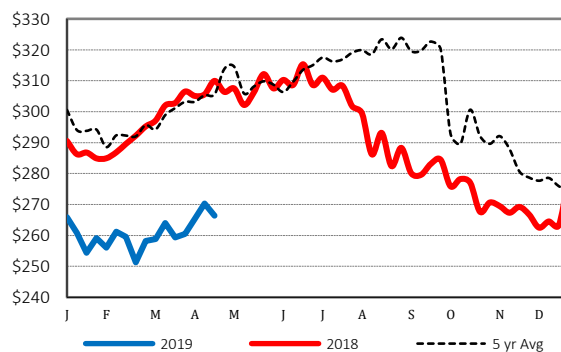
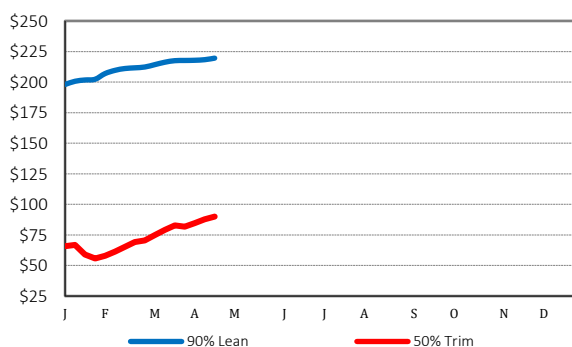
Weekly Canadian Imports	
WA LS 637	Week ending: 4/20/19
Slaughter St/Hf/Cow	10,478
Slaughter Bulls	1,032
YTD St/Hf/Cow	155,795
YTD Bulls	10,763

Estimated Cattle Slaughter	
SJ LS 710	
Week to Date (est)	604,000
Same Period Last Week (est)	592,000
Same Period Last Year (act)	593,000
Cow and Bull Total Through Thursday	101,000
Previous Week Total Cow & Bull Est	98,000

Weekly Cow Prices - Dressed Basis				
LM CT168	Breaker	Boning	Lean	Bull
National	14.87	117.49	119.79	146.58
Northwest	127.94	121.55	119.80	154.37
Southwest	114.97	120.22	125.03	146.13
Eastern	109.96	110.74	113.74	142.20

Beef Production			
SJ LS 711	4/20/2019	4/13/2019	4/21/2018
Cow and Bull Slaughter	131,104	134,294	131,440
Year to Date Totals	2,142,439	2,011,335	2,064,444

2019 90% Lean vs 50% Lean 100% Lean Inside Rounds

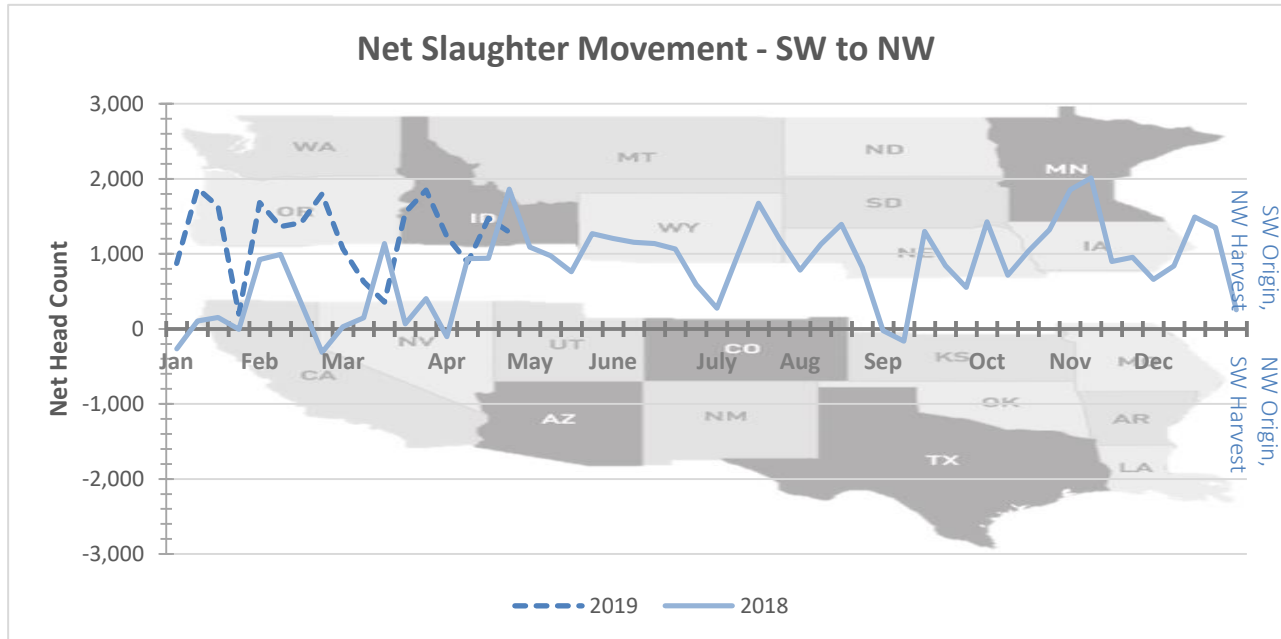


Net Slaughter Movement of Cows and Bulls

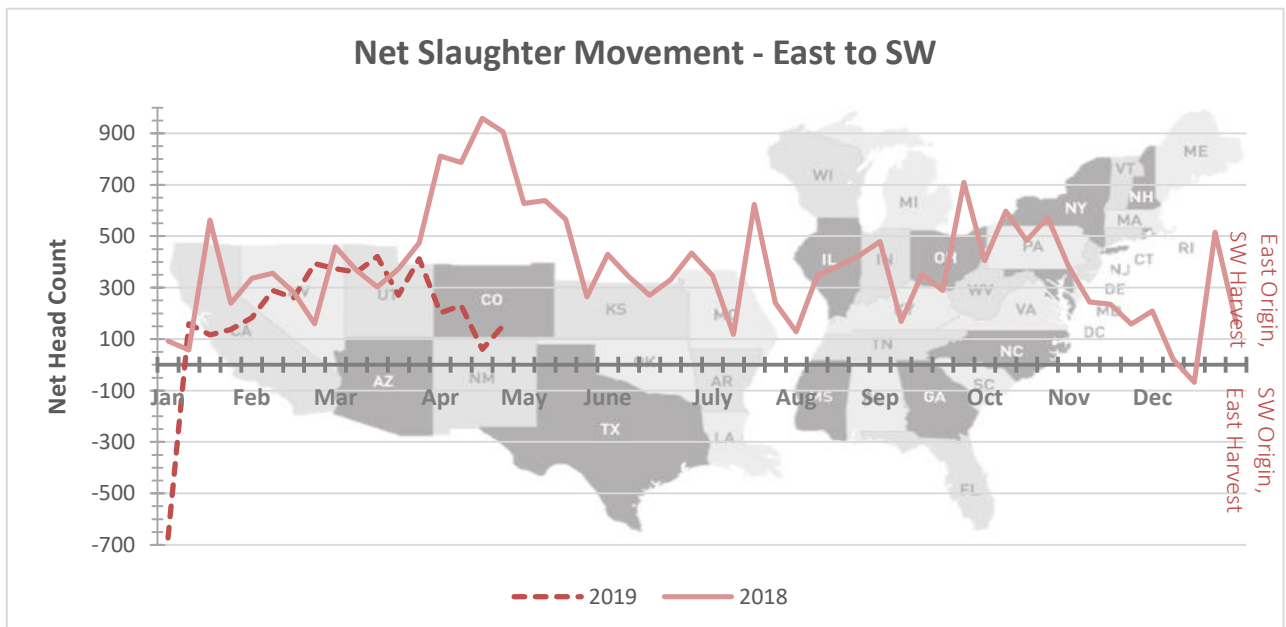
Data shown in the graphs below is derived from Livestock Mandatory Price Reporting -

[LM CT168](#) National Weekly Direct Cow and Bull Report

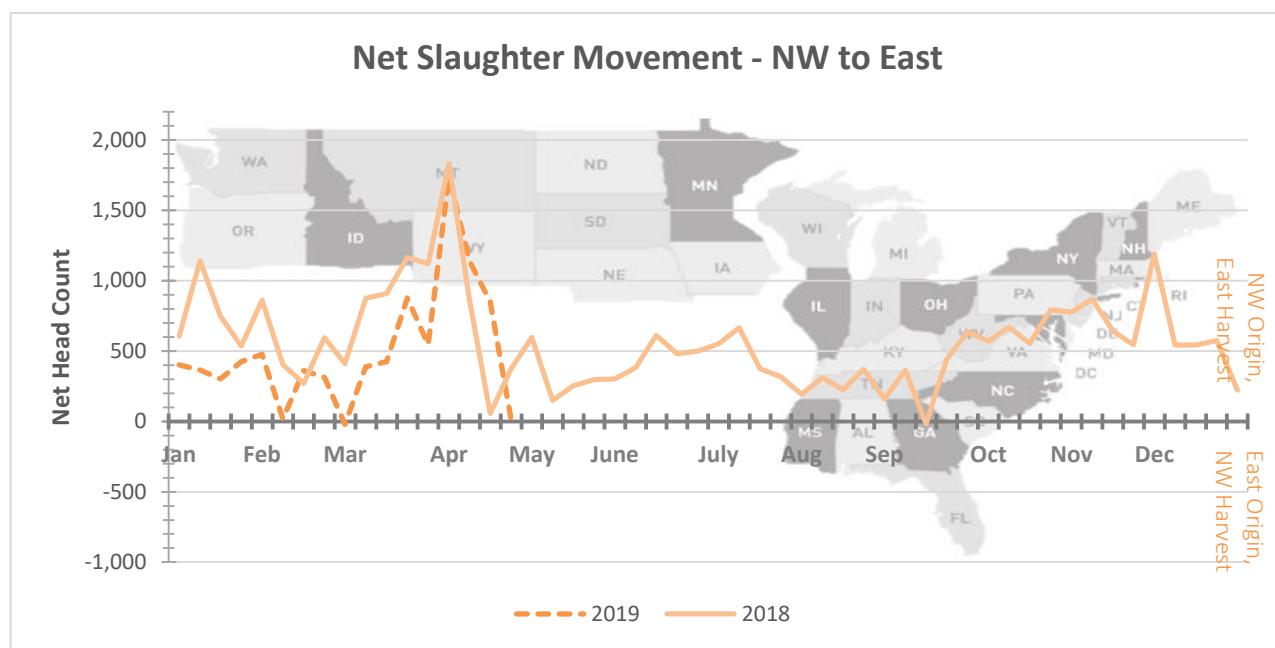
Graph Overview: <https://www.ams.usda.gov/sites/default/files/media/CowandBullMovementGraphOverview.pdf>



This graph illustrates the net slaughter movement from area to area. For example, when the line is in positive territory, there are more cows and bulls originating in the SW area and being transferred to the NW area for harvest. When the line is in negative territory, there are more cows and bulls originating in the NW area and being transferred to the SW area for harvest.



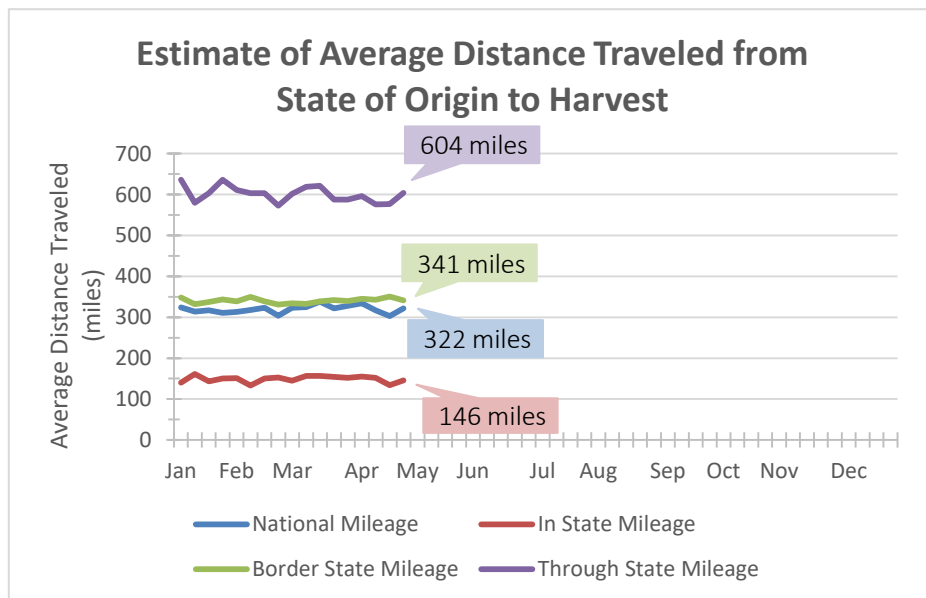
This graph illustrates the net slaughter movement from area to area. For example, when the line is in positive territory, there are more cows and bulls originating in the East area and being transferred to the SW area for harvest. When the line is in negative territory, there are more cows and bulls originating in the SW area and being transferred to the East area for harvest.



This graph illustrates the net slaughter movement from area to area. For example, when the line is in positive territory, there are more cows and bulls originating in the NW area and being transferred to the East area for harvest. When the line is in negative territory, there are more cows and bulls originating in the East area and being transferred to the NW area for harvest.

Estimated Average Distance Traveled from State of Origin to Harvest of Domestic Cows and Bulls

Data shown in the graph and distribution below is derived from Livestock Mandatory Price Reporting



This data is for Week-Ending 4-26-2019

Distance Distribution

	Head Count	Estimated Mileage
Within State	16,989	146
Bordering States	11,033	341
Through States	9,850	604
Total Movement	37,872	322

Through States	Head Count
<400 miles	2,826
400-800 miles	4,996
≥800 miles	2,028

Note: To calculate the distance traveled for each lot, the distance is found from the geographical center of the originating state to the location of the harvesting plant. This information is used to calculate the weighted average distance traveled from state of origin to harvest.

Source: USDA Livestock, Poultry, and Grain Market News
Des Moines, Iowa | 515-284-4460 | dsm.lpgmn@ams.usda.gov
www.ams.usda.gov/LPSMarketNewsPage