



# National Weekly Cow and Boneless Beef Summary

Agricultural Marketing Service

Livestock, Poultry, and Grain Market News

April 26, 2019

Boneless Processing Beef and Beef Trimmings					100% Lean Items			
	National		Central			Loads	Wtd Avg	Change
<a href="#">LM XB 460</a>	<b>Loads</b>	<b>Wtd Avg</b>	<b>Loads</b>	<b>Wtd Avg</b>	<a href="#">LM XB 461</a>			
Fresh 92-94%	6.0	229.30	4.4	229.03	Cutter Cow Carcass Cutout		170.96	1.24
Fresh 90%	51.2	221.07	43.9	220.80	Inside Rounds - Boxed	2.0	281.26	(3.22)
Fresh 85%	63.2	197.52	43.1	197.32	Outside Rounds	0.0	0.00	0.00
Fresh 81%	6.1	187.05	5.8	187.00	Eye of Rounds	1.3	256.59	1.08
Fresh 65%	15.2	118.12	6.9	116.30	Flats and Eyes - Combos	7.1	236.88	2.40
Fresh 50%	54.3	90.31			Striploins	6.9	347.17	12.22
					S.P.B. - Combo	6.3	232.61	3.47

Ground Beef			
<a href="#">LM XB 459</a>		<b>Loads</b>	<b>Wtd Avg</b>
Fresh 73%		8.4	182.33
Fresh 81%		23.3	196.66
Fresh 93%		3.4	305.06
Ground Chuck		7.0	208.9
Ground Round		1.2	256.2
Ground Sirloin		0.2	306.0
Steer/Heifer/Cow Ground Beef			
Fresh 81%		23.0	199.3
Fresh 93%		0.5	294.7
Ground Chuck		0.4	198.8

Cow By-Product Drop Estimate			
<a href="#">NW LS 444</a>			7.66
CWT Live			
CWT Dressed			16.30

Canadian Live Cow Prices			
<a href="#">WA LS 718</a>		Prices in US Dollars	
Ontario			53.29
Alberta			67.85

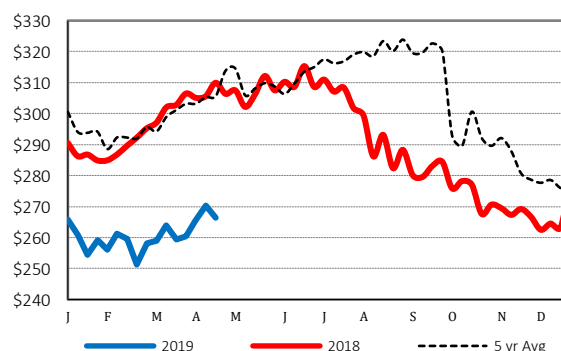
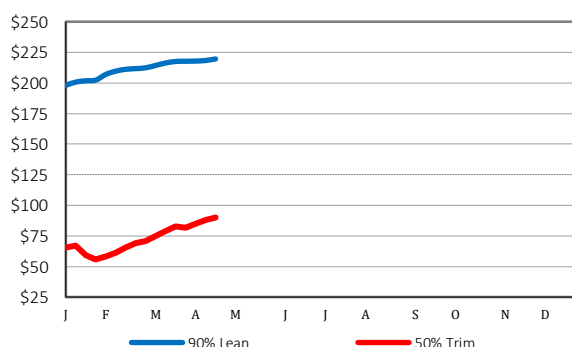
Weekly Canadian Imports			
<a href="#">WA LS 637</a>	Week ending:		4/13/19
Slaughter St/Hf/Cow			9,188
Slaughter Bulls			818
YTD St/Hf/Cow			145,317
YTD Bulls			9,731

Estimated Cattle Slaughter			
<a href="#">SJ LS 710</a>			
Week to Date (est)			643,000
Same Period Last Week (est)			641,000
Same Period Last Year (act)			628,000
Cow and Bull Total Through Thursday			98,000
Previous Week Total Cow & Bull Est			138,000

Weekly Cow Prices - Dressed Basis				
<a href="#">LM CT168</a>	<b>Breaker</b>	<b>Boning</b>	<b>Lean</b>	<b>Bull</b>
National	114.40	112.01	113.27	136.98
Northwest	126.77	119.64	116.81	153.29
Southwest	111.69	111.80	115.62	133.90
Eastern	104.88	103.01	106.65	138.06

Beef Production			
<a href="#">SJ LS 711</a>	4/13/2019	4/6/2019	4/14/2018
Cow and Bull Slaughter	134,294	140,255	126,528
Year to Date Totals	2,011,335	1,877,041	1,933,004

## 2019 90% Lean vs 50% Lean 100% Lean Inside Rounds

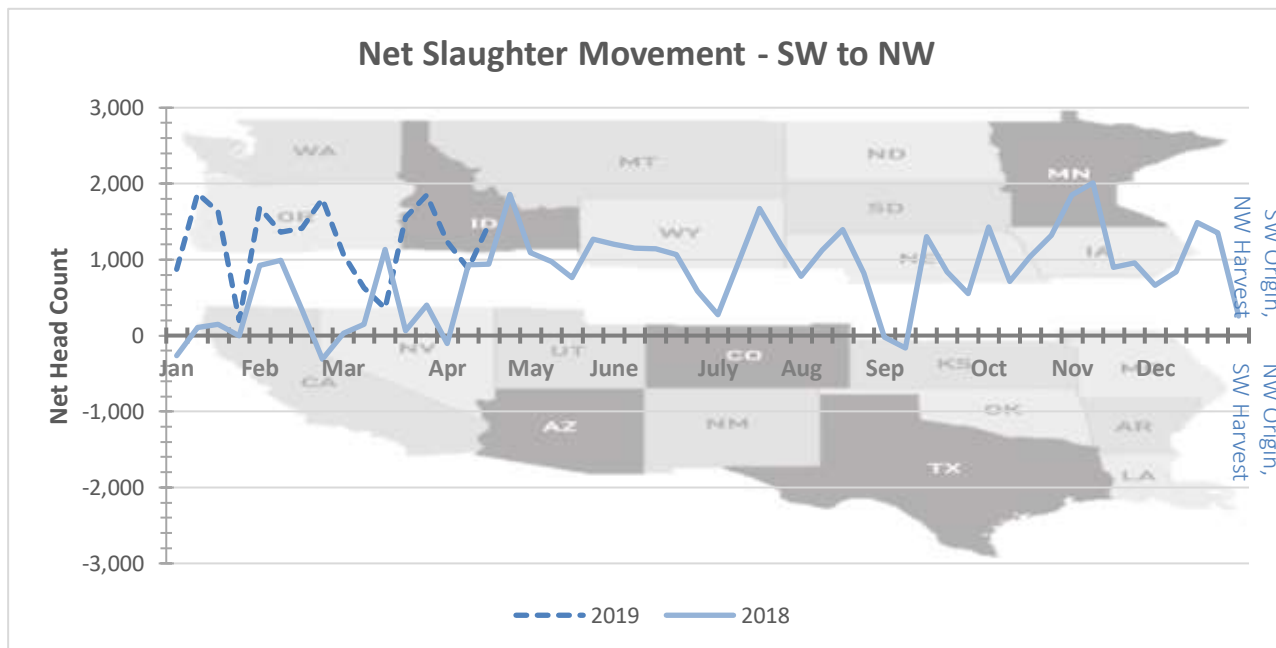


## Net Slaughter Movement of Cows and Bulls

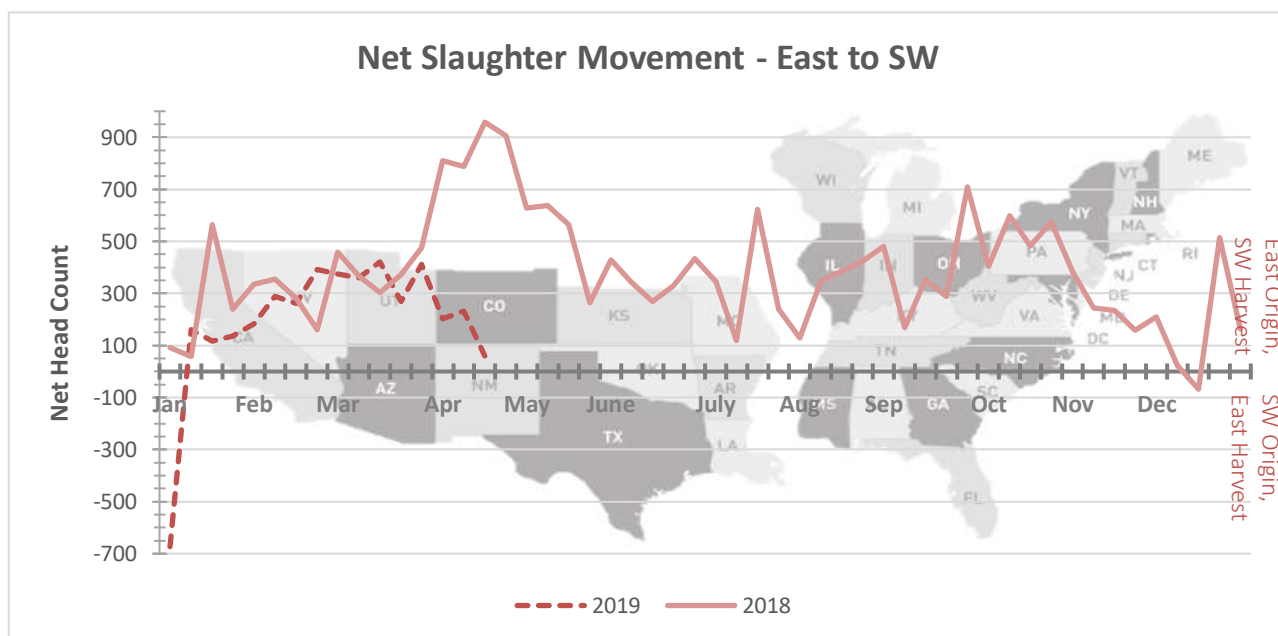
Data shown in the graphs below is derived from Livestock Mandatory Price Reporting -

[LM CT168](#) National Weekly Direct Cow and Bull Report

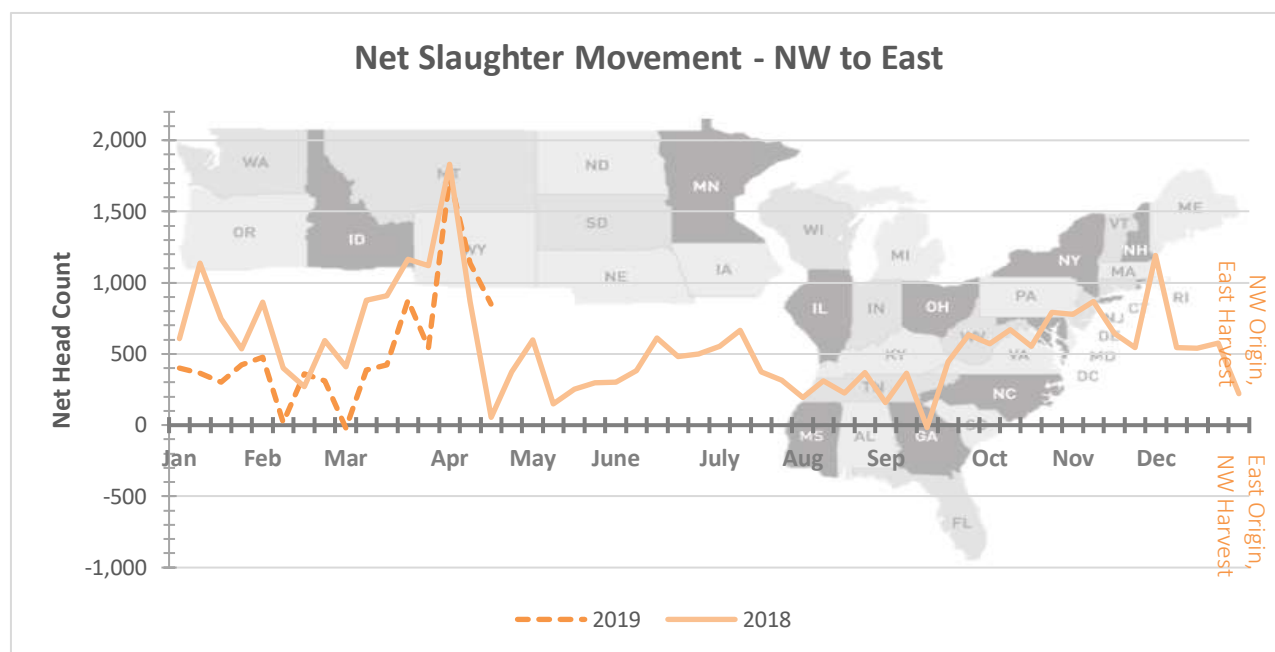
Graph Overview: <https://www.ams.usda.gov/sites/default/files/media/CowandBullMovementGraphOverview.pdf>



This graph illustrates the net slaughter movement from area to area. For example, when the line is in positive territory, there are more cows and bulls originating in the SW area and being transferred to the NW area for harvest. When the line is in negative territory, there are more cows and bulls originating in the NW area and being transferred to the SW area for harvest.



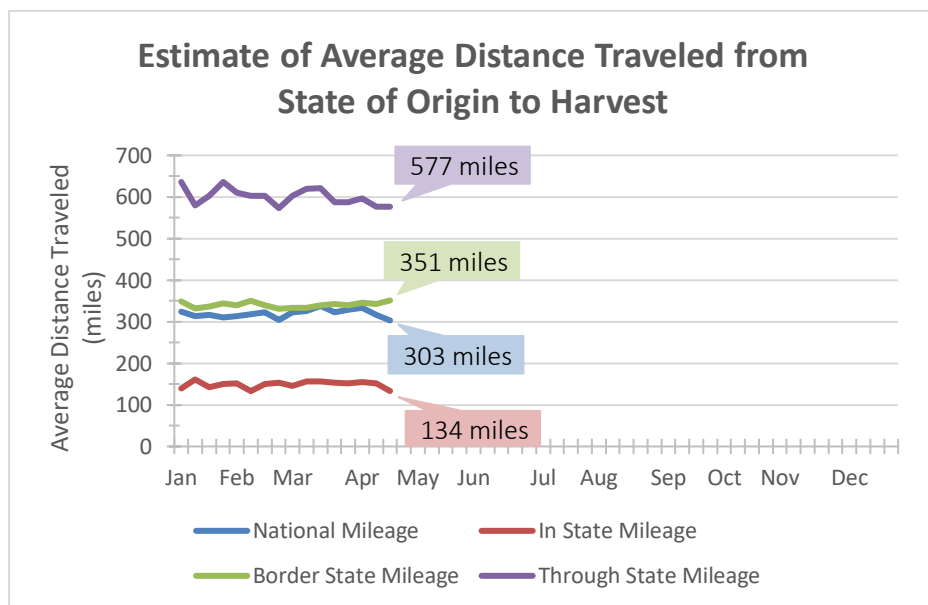
This graph illustrates the net slaughter movement from area to area. For example, when the line is in positive territory, there are more cows and bulls originating in the East area and being transferred to the SW area for harvest. When the line is in negative territory, there are more cows and bulls originating in the SW area and being transferred to the East area for harvest.



This graph illustrates the net slaughter movement from area to area. For example, when the line is in positive territory, there are more cows and bulls originating in the NW area and being transferred to the East area for harvest. When the line is in negative territory, there are more cows and bulls originating in the East area and being transferred to the NW area for harvest.

### Estimated Average Distance Traveled from State of Origin to Harvest of Domestic Cows and Bulls

Data shown in the graph and distribution below is derived from Livestock Mandatory Price Reporting



This data is for Week-Ending 4-19-2019

#### Distance Distribution

	Head Count	Estimated Mileage
Within State	23,009	134
Bordering States	14,698	351
Through States	11,593	577
<b>Total Movement</b>	<b>49,300</b>	<b>303</b>

Through States	Head Count
<400 miles	4,121
400-800 miles	5,761
≥800 miles	1,711

Note: To calculate the distance traveled for each lot, the distance is found from the geographical center of the originating state to the location of the harvesting plant. This information is used to calculate the weighted average distance traveled from state of origin to harvest.

**Source:** USDA Livestock, Poultry, and Grain Market News  
Des Moines, Iowa | 515-284-4460 | dsm.lpgmn@ams.usda.gov  
[www.ams.usda.gov/LPSMarketNewsPage](http://www.ams.usda.gov/LPSMarketNewsPage)