



# National Weekly Cow and Boneless Beef Summary

Agricultural Marketing Service

Livestock, Poultry, and Grain Market News

April 19, 2019

Boneless Processing Beef and Beef Trimmings					100% Lean Items			
	National		Central			Loads	Wtd Avg	Change
<a href="#">LM XB 460</a>	<b>Loads</b>	<b>Wtd Avg</b>	<b>Loads</b>	<b>Wtd Avg</b>	<a href="#">LM XB 461</a>			
Fresh 92-94%	4.4	228.03	4.4	228.03	Cutter Cow Carcass Cutout		169.71	0.38
Fresh 90%	58.3	219.58	49.5	219.32	Inside Rounds - Boxed	1.7	284.48	9.46
Fresh 85%	63.9	197.28	45.4	197.63	Outside Rounds	0.0	0.00	0.00
Fresh 81%	6.9	186.09	6.3	186.00	Eye of Rounds	1.4	255.51	1.65
Fresh 65%	11.8	118.15	4.4	117.13	Flats and Eyes - Combos	4.1	234.48	0.37
Fresh 50%	43.0	89.99			Striploins	6.6	334.95	(3.00)
					S.P.B. - Combo	3.7	229.14	(1.62)

Ground Beef			
<a href="#">LM XB 459</a>		<b>Loads</b>	<b>Wtd Avg</b>
Fresh 73%		10.4	185.67
Fresh 81%		20.3	203.28
Fresh 93%		3.2	301.48
Ground Chuck		12.8	209.9
Ground Round		0.8	255.4
Ground Sirloin		0.2	311.0
Steer/Heifer/Cow Ground Beef			
Fresh 81%		28.3	197.8
Fresh 93%		1.8	305.8
Ground Chuck		0.4	198.9

Cow By-Product Drop Estimate			
<a href="#">NW LS 444</a>			
CWT Live			7.82
CWT Dressed			16.64

Canadian Live Cow Prices			
<a href="#">WA LS 718</a>		Prices in US Dollars	
Ontario			50.83
Alberta			66.61

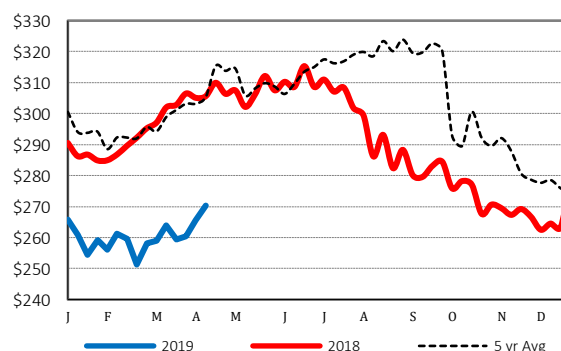
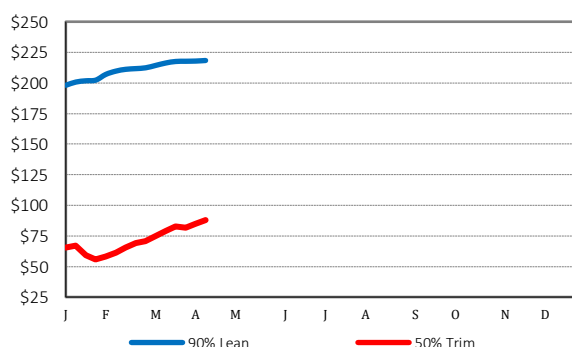
Weekly Canadian Imports			
<a href="#">WA LS 637</a>	Week ending:		4/6/19
Slaughter St/Hf/Cow			11,758
Slaughter Bulls			937
YTD St/Hf/Cow			136,129
YTD Bulls			8,913

Estimated Cattle Slaughter			
<a href="#">SJ LS 710</a>			
Week to Date (est)			638,000
Same Period Last Week (est)			638,000
Same Period Last Year (act)			627,000
Cow and Bull Total Through Thursday			103,000
Previous Week Total Cow & Bull Est			136,000

Weekly Cow Prices - Dressed Basis				
<a href="#">LM CT168</a>	<b>Breaker</b>	<b>Boning</b>	<b>Lean</b>	<b>Bull</b>
National	114.40	112.01	113.27	136.98
Northwest	126.77	119.64	116.81	153.29
Southwest	111.69	111.80	115.62	133.90
Eastern	104.88	103.01	106.65	138.06

Beef Production			
<a href="#">SJ LS 711</a>	4/6/2019	3/30/2019	4/7/2018
Cow and Bull Slaughter	140,255	137,794	127,254
Year to Date Totals	1,877,041	1,736,786	1,806,476

## 2019 90% Lean vs 50% Lean 100% Lean Inside Rounds

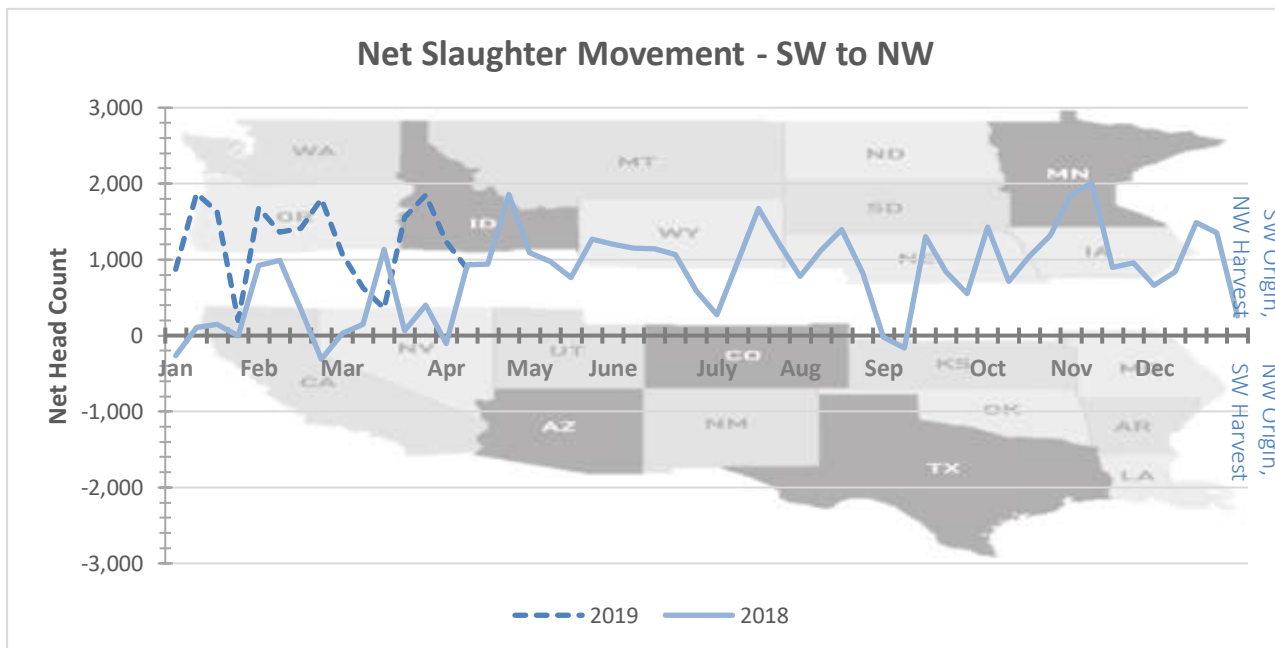


## Net Slaughter Movement of Cows and Bulls

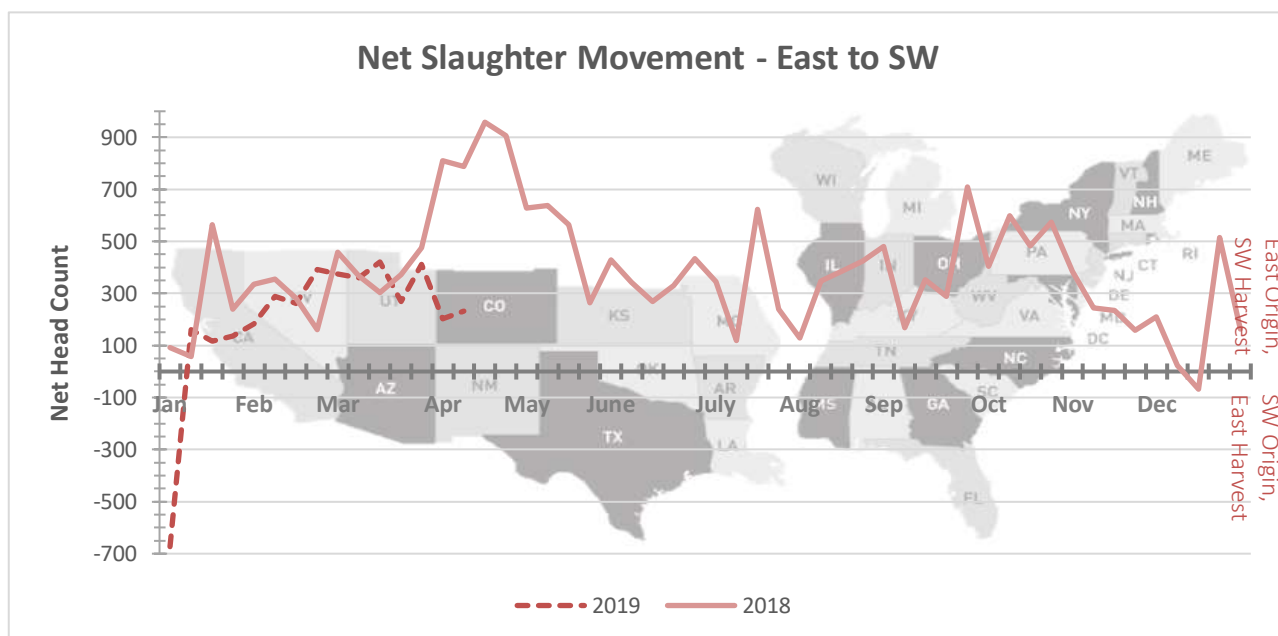
Data shown in the graphs below is derived from Livestock Mandatory Price Reporting -

[LM CT168](#) National Weekly Direct Cow and Bull Report

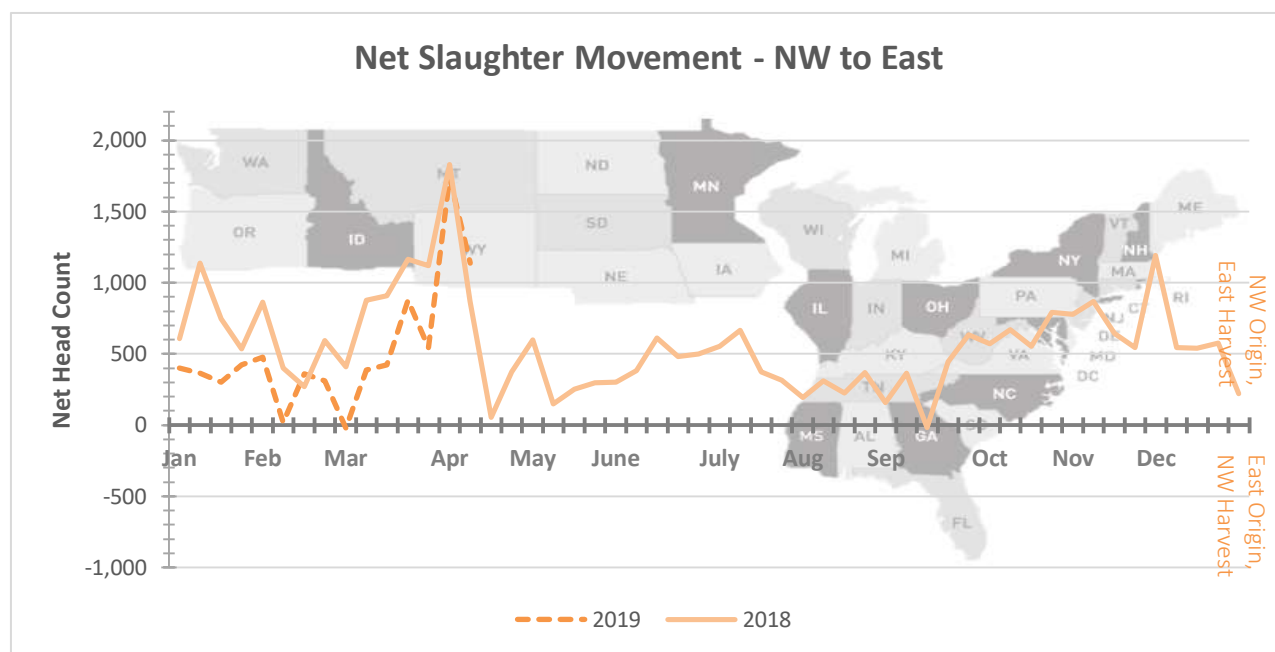
Graph Overview: <https://www.ams.usda.gov/sites/default/files/media/CowandBullMovementGraphOverview.pdf>



This graph illustrates the net slaughter movement from area to area. For example, when the line is in positive territory, there are more cows and bulls originating in the SW area and being transferred to the NW area for harvest. When the line is in negative territory, there are more cows and bulls originating in the NW area and being transferred to the SW area for harvest.



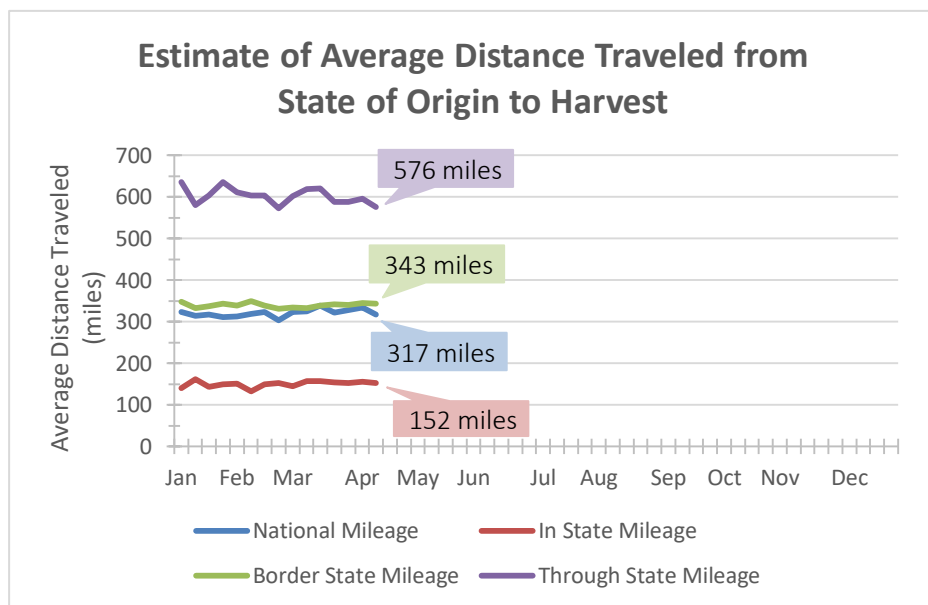
This graph illustrates the net slaughter movement from area to area. For example, when the line is in positive territory, there are more cows and bulls originating in the East area and being transferred to the SW area for harvest. When the line is in negative territory, there are more cows and bulls originating in the SW area and being transferred to the East area for harvest.



This graph illustrates the net slaughter movement from area to area. For example, when the line is in positive territory, there are more cows and bulls originating in the NW area and being transferred to the East area for harvest. When the line is in negative territory, there are more cows and bulls originating in the East area and being transferred to the NW area for harvest.

#### Estimated Average Distance Traveled from State of Origin to Harvest of Domestic Cows and Bulls

Data shown in the graph and distribution below is derived from Livestock Mandatory Price Reporting



This data is for Week-Ending 4-12-2019

#### Distance Distribution

	Head Count	Estimated Mileage
Within State	18,399	152
Bordering States	14,229	343
Through States	10,348	576
<b>Total Movement</b>	<b>42,976</b>	<b>317</b>

Through States	Head Count
<400 miles	3,933
400-800 miles	4,509
≥800 miles	1,906

Note: To calculate the distance traveled for each lot, the distance is found from the geographical center of the originating state to the location of the harvesting plant. This information is used to calculate the weighted average distance traveled from state of origin to harvest.

**Source:** USDA Livestock, Poultry, and Grain Market News  
 Des Moines, Iowa | 515-284-4460 | dsm.lpgmn@ams.usda.gov  
[www.ams.usda.gov/LPSMarketNewsPage](http://www.ams.usda.gov/LPSMarketNewsPage)