



National Weekly Cow and Boneless Beef Summary

Agricultural Marketing Service

Livestock, Poultry, and Grain Market News

April 5, 2019

Boneless Processing Beef and Beef Trimmings					100% Lean Items			
	National		Central			Loads	Wtd Avg	Change
LM XB 460	Loads	Wtd Avg	Loads	Wtd Avg	LM XB 461			
Fresh 92-94%	4.6	227.80	4.1	228.08	Cutter Cow Carcass Cutout		168.86	0.17
Fresh 90%	55.9	217.85	47.1	217.38	Inside Rounds - Boxed	2.8	274.80	(3.49)
Fresh 85%	66.2	196.14	40.8	196.44	Outside Rounds	0.0	0.00	0.00
Fresh 81%	7.4	184.92	7.0	184.79	Eye of Rounds	1.6	259.75	3.43
Fresh 65%	13.5	112.75	4.0	112.47	Flats and Eyes - Combos	4.6	236.93	0.91
Fresh 50%	34.3	84.60			Striploins	8.5	324.93	(5.20)
					S.P.B. - Combo	4.6	230.66	1.64

Ground Beef			
LM XB 459		Loads	Wtd Avg
Fresh 73%		7.9	178.53
Fresh 81%		22.3	197.58
Fresh 93%		3.2	304.55
Ground Chuck		8.7	199.0
Ground Round		0.4	255.9
Ground Sirloin		0.3	305.3
Steer/Heifer/Cow Ground Beef			
Fresh 81%		23.3	196.9
Fresh 93%		1.7	307.3
Ground Chuck		0.7	198.3

Cow By-Product Drop Estimate	
NW LS 444	
CWT Live	8.08
CWT Dressed	17.19

Canadian Live Cow Prices	
	Prices in US Dollars
WA LS 718	
Ontario	49.83
Alberta	66.29

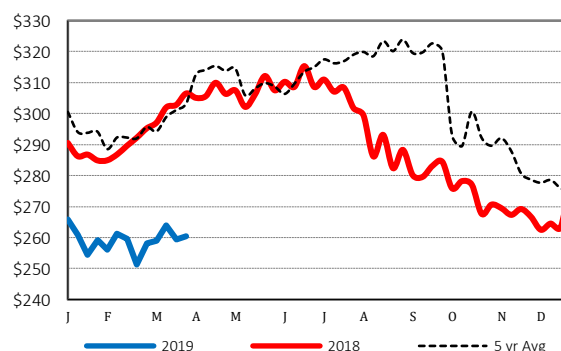
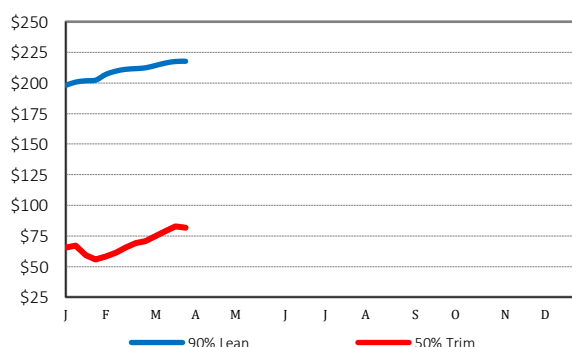
Weekly Canadian Imports		
WA LS 637	Week ending:	3/23/19
Slaughter St/Hf/Cow		12,052
Slaughter Bulls		912
YTD St/Hf/Cow		113,873
YTD Bulls		6,967

Estimated Cattle Slaughter	
SJ LS 710	
Week to Date (est)	621,000
Same Period Last Week (est)	614,000
Same Period Last Year (act)	615,000
Cow and Bull Total Through Thursday	105,000
Previous Week Total Cow & Bull Est	135,000

Weekly Cow Prices - Dressed Basis				
LM CT168	Breaker	Boning	Lean	Bull
National	108.65	104.99	108.28	135.63
Northwest	119.60	109.56	107.32	146.22
Southwest	109.89	106.29	112.50	131.74
Eastern	102.57	98.48	102.18	138.51

Beef Production			
SJ LS 711	3/23/2019	3/16/2019	3/24/2018
Cow and Bull Slaughter	143,692	133,378	130,514
Year to Date Totals	1,598,992	1,455,300	1,553,678

2019 90% Lean vs 50% Lean 100% Lean Inside Rounds

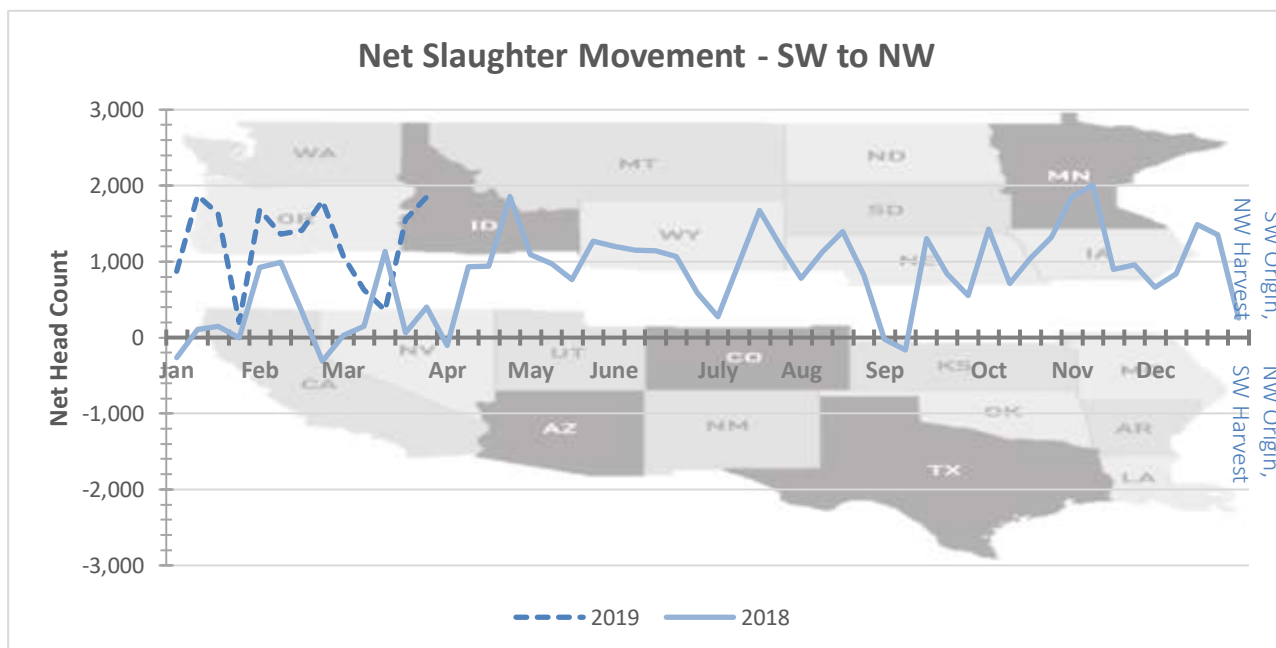


Net Slaughter Movement of Cows and Bulls

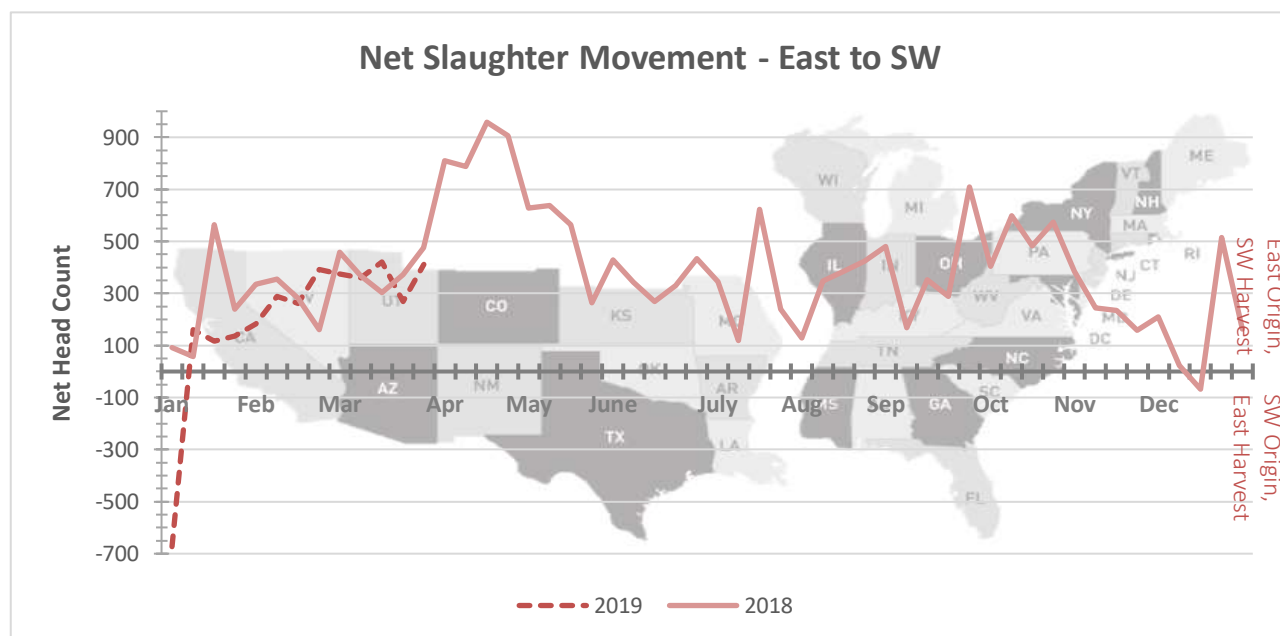
Data shown in the graphs below is derived from Livestock Mandatory Price Reporting -

[LM CT168](#) National Weekly Direct Cow and Bull Report

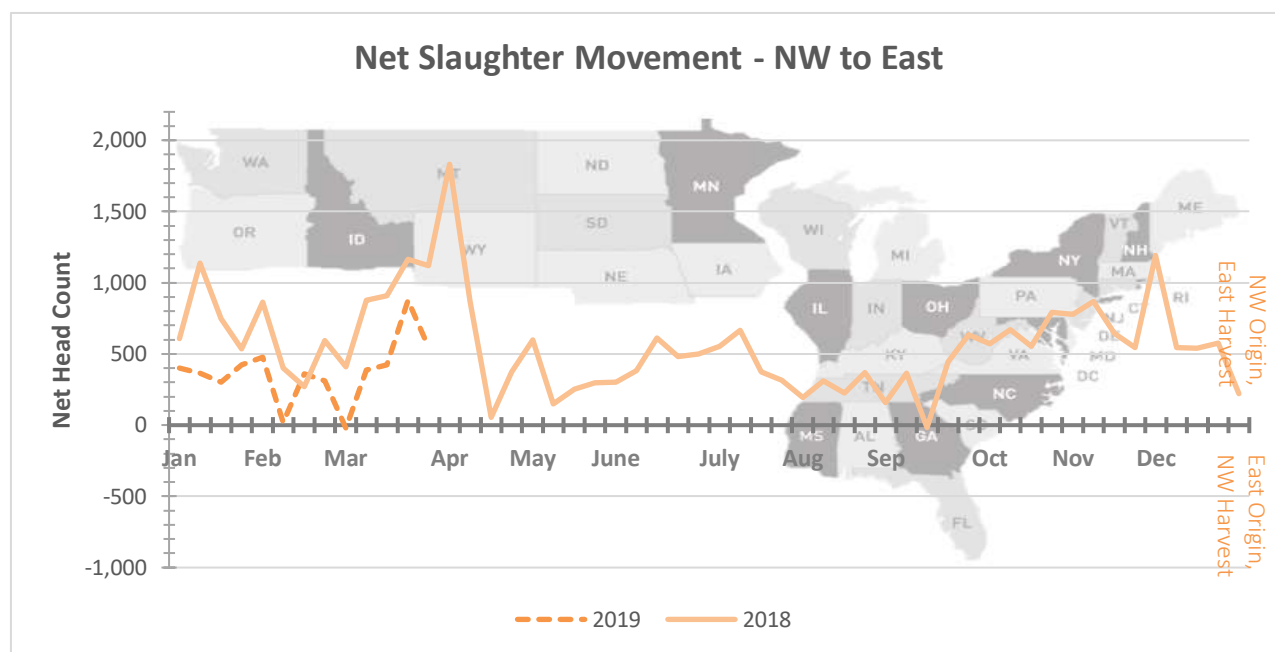
Graph Overview: <https://www.ams.usda.gov/sites/default/files/media/CowandBullMovementGraphOverview.pdf>



This graph illustrates the net slaughter movement from area to area. For example, when the line is in positive territory, there are more cows and bulls originating in the SW area and being transferred to the NW area for harvest. When the line is in negative territory, there are more cows and bulls originating in the NW area and being transferred to the SW area for harvest.



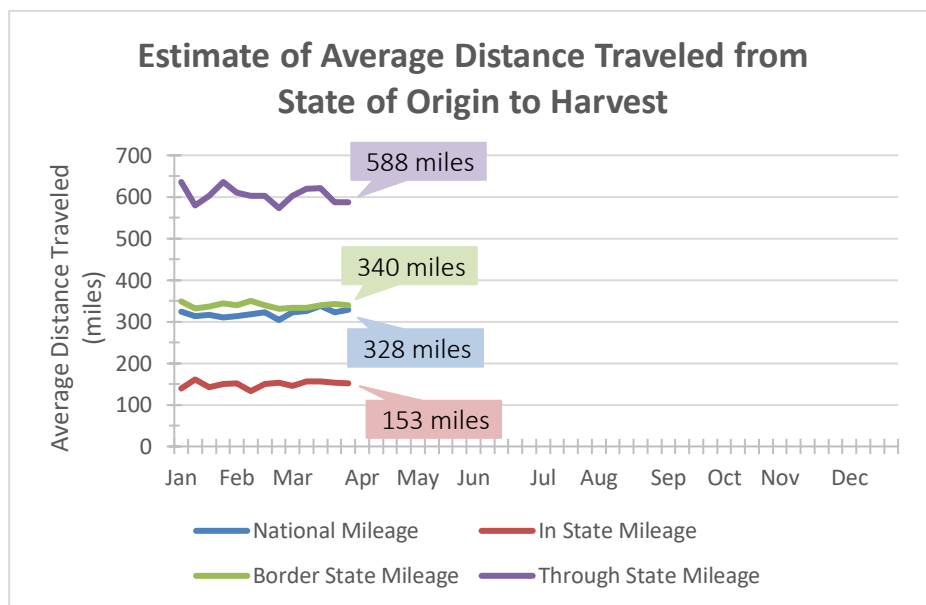
This graph illustrates the net slaughter movement from area to area. For example, when the line is in positive territory, there are more cows and bulls originating in the East area and being transferred to the SW area for harvest. When the line is in negative territory, there are more cows and bulls originating in the SW area and being transferred to the East area for harvest.



This graph illustrates the net slaughter movement from area to area. For example, when the line is in positive territory, there are more cows and bulls originating in the NW area and being transferred to the East area for harvest. When the line is in negative territory, there are more cows and bulls originating in the East area and being transferred to the NW area for harvest.

Estimated Average Distance Traveled from State of Origin to Harvest of Domestic Cows and Bulls

Data shown in the graph and distribution below is derived from Livestock Mandatory Price Reporting



This data is for Week-Ending 3-29-2019

Distance Distribution

	Head Count	Estimated Mileage
Within State	18,862	153
Bordering States	13,694	340
Through States	12,155	588
Total Movement	44,711	328

Through States	Head Count
<400 miles	4,076
400-800 miles	6,002
≥800 miles	2,077

Note: To calculate the distance traveled for each lot, the distance is found from the geographical center of the originating state to the location of the harvesting plant. This information is used to calculate the weighted average distance traveled from state of origin to harvest.

Source: USDA Livestock, Poultry, and Grain Market News
Des Moines, Iowa | 515-284-4460 | dsm.lpgmn@ams.usda.gov
www.ams.usda.gov/LPSMarketNewsPage