

DAILY DIRECT HOGS PLANT DELIVERED as of 1:30 PM

Negotiated Barrow and Gilt:

Carcass Base Price

Live Price

NATIONAL - AMS 2675/LM_HG203:

Range:	\$84.00	\$93.00	\$57.50	\$70.95
Weighted Average:	\$90.02		\$66.79	
Change from Prior Day:	0.53		(-\$3.35)	
Head Count:	4,142		804	

IOWA/MINNESOTA - AMS 2675/LM_HG206:

Weighted Average:	\$89.16	*
Change from Prior Day:	(-\$0.28)	*

WESTERN CORNBELT - AMS 2675/LM_HG212:

Weighted Average:	\$89.52	*
Change from Prior Day:	0.45	*

EASTERN CORNBELT - AMS 2675/LM_HG210:

Weighted Average:	*	\$66.79
Change from Prior Day:	*	*

*Price not reported due to confidentiality

NATIONAL DAILY PORK REPORT FOB PLANT- AMS 2498/LM_PK602:

Carcass Cutout Values	98.42	Change:	(-\$2.54)
Primal Loin	89.75		3.50
Primal Butt	108.54		(-\$0.57)
Primal Picnic	70.82		1.03
Primal Rib	150.30		1.36
Primal Ham	82.71		0.51
Primal Belly	156.20		(-\$22.88)
Total Loads	349.33		
Pork Cuts	327.76	lds.	
Trim/Process Pork	21.56	lds.	

Weekly USDA By-Product Drop Value (Hog): 4.26 0.01

DAILY HOG SLAUGHTER UNDER FIS - AMS 3208/SJ_LS710

Today (est)	480,000	Saturday:	100,000
Week Ago (est)	467,000		125,000
Year Ago (act)	481,744		112,823
Week to Date (est)	2,438,000		2,538,000
Same Period Last Week (est)	2,397,000		2,522,000
Same Period Last Year (act)	2,437,644		2,550,467

National Daily Direct Hog Prior Day Report - Slaughtered Swine/LM_HG201

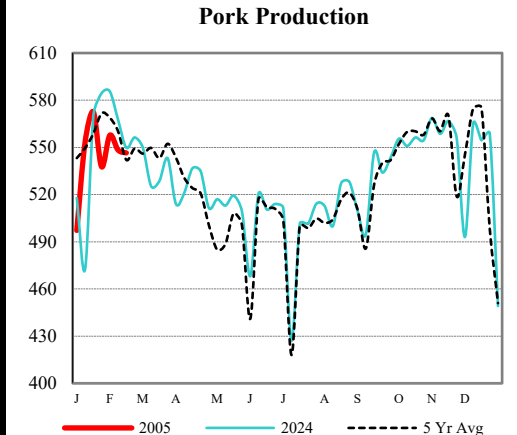
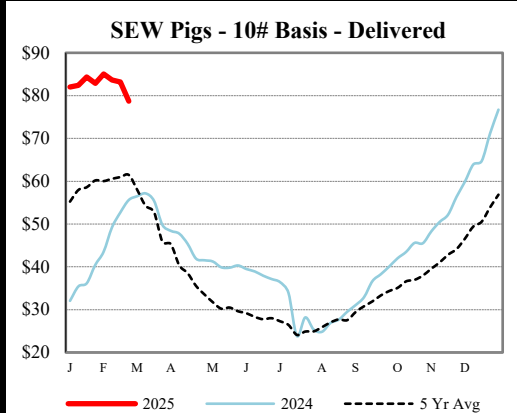
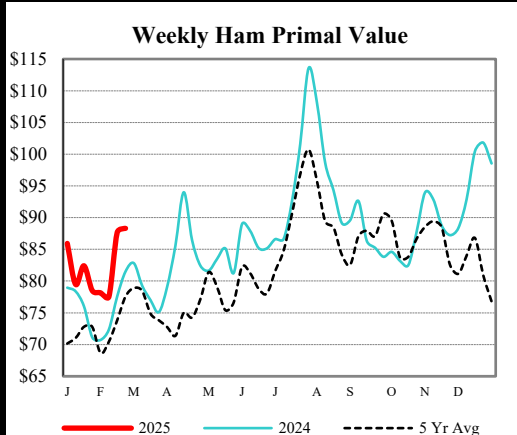
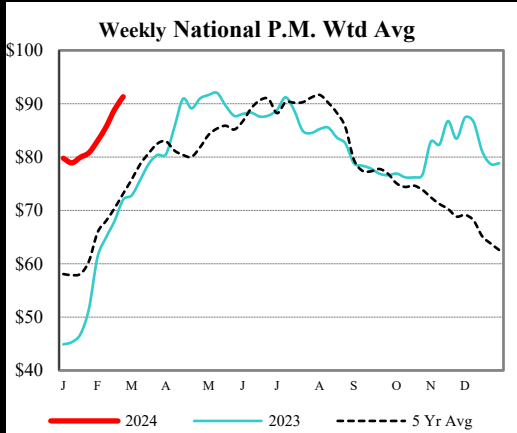
Producer Sold:	NEG	OMF	SPMF	OPA	Total
Head Count	5,610	31570	125254	76,686	239,194
Carcass Base Price	91.82	82.11	87.83	86.64	86.81
Average Net Price	91.89	84.78	89.39	88.12	88.46

Negotiated Formula included in total *Price not reported due to confidentiality.

US Direct Delivered Feeder Pig Summary for Weekending - AMS 2810

Formula, Cash, & Composite Wtd Avg Prices

		<u>Formula</u>	<u>Cash</u>	<u>Composite</u>
SEW	10-12 lb Basis	70.28	70.16	70.19
Feeder Pigs	40 lb Basis		109.15	109.15



USDA Livestock, Poultry & Grain Market News

Des Moines, Iowa | PH 515-284-4460

Email: Desm.LPGMN@usda.gov

<https://mymarketnews.ams.usda.gov/viewReport/2872>

[USDA AMS Livestock, Poultry & Grain Market News](#)