

DAILY DIRECT HOGS PLANT DELIVERED as of 1:30 PM

Negotiated Barrow and Gilt:

Carcass Base Price

Live Price

NATIONAL - AMS 2675/LM HG203:

Range:	\$68.00	\$76.00	*
Weighted Average:	\$71.90		*
Change from Prior Day:	(-4.05)		*
Head Count:	718		800

IOWA/MINNESOTA - AMS 2675/LM HG206:

Weighted Average:	*		*
Change from Prior Day:	*		*

WESTERN CORNBELT - AMS 2675/LM HG212:

Weighted Average:	\$74.34		*
Change from Prior Day:	*		*

EASTERN CORNBELT - AMS 2675/LM HG210:

Weighted Average:	*		*
Change from Prior Day:	*		*

*Price not reported due to confidentiality

NATIONAL DAILY PORK REPORT FOB PLANT- AMS 2498/LM PK602:

Carcass Cutout Values	77.28	Change:	(-1.51)
Primal Loin	79.03		0.00
Primal Butt	102.73		0.87
Primal Picnic	66.01		0.09
Primal Rib	117.35		(-3.09)
Primal Ham	70.81		0.97
Primal Belly	78.76		(-9.64)
Total Loads	336.60		
Pork Cuts	310.37	lds.	
Trim/Process Pork	26.22	lds.	

Weekly USDA By-Product Drop Value (Hog):

5.38

UNCH

DAILY HOG SLAUGHTER UNDER FIS - AMS 3208/SJ LS710

Today (est)	472,000	Saturday:	104,000
Week Ago (est)	482,000		63,000
Year Ago (act)	459,000		59,000
Week to Date (est)	2,393,000		2,497,000
Same Period Last Week (est)	2,394,000		2,457,000
Same Period Last Year (act)	2,380,000		2,439,000

CME Lean Hog Close

	<u>High</u>	<u>Low</u>	<u>Change</u>	<u>Settle</u>
APR	76.40	75.00	(-1.20)	75.25
MAY	85.00	83.65	(-0.13)	84.63
JUN	92.38	90.63	0.03	91.63
JLY	94.55	92.73	0.45	94.03

CME Lean Hog Delayed Futures

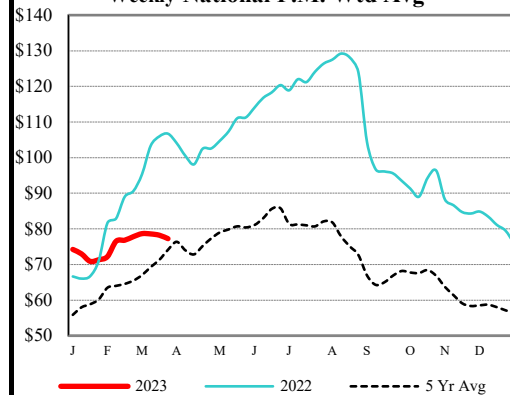
US Direct Delivered Feeder Pig Summary for Weekending - AMS 2810

31-Mar-23

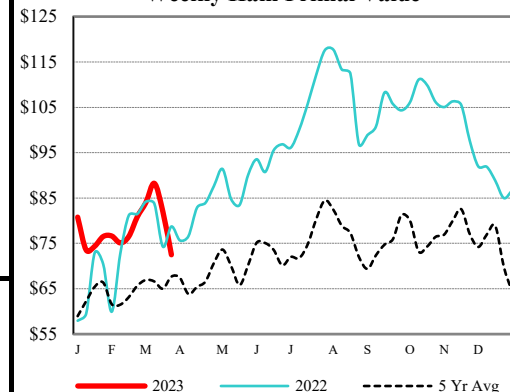
Formula, Cash, & Composite Wtd Avg Prices

		<u>Formula</u>	<u>Cash</u>	<u>Composite</u>
SEW	10-12 lb Basis	45.18	34.29	40.33
Feeder Pigs	40 lb Basis		80.97	80.97

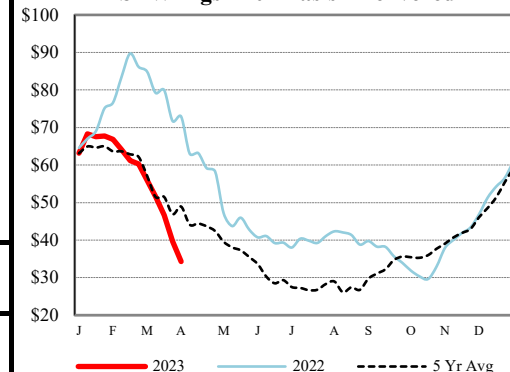
Weekly National P.M. Wtd Avg



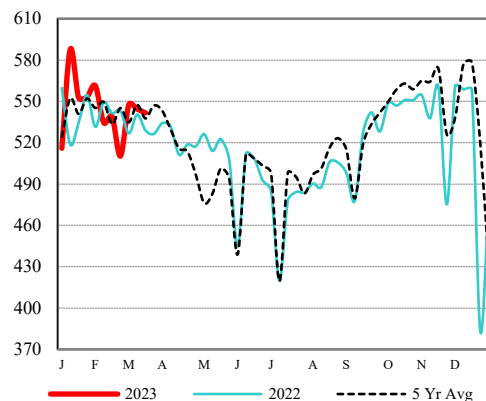
Weekly Ham Primal Value



SEW Pigs - 10# Basis - Delivered



Pork Production



USDA Livestock, Poultry & Grain Market News

Des Moines, Iowa | PH 515-284-4460

Email: Desm.LPGMN@usda.gov

<https://mymarketnews.ams.usda.gov/viewReport/2872>

USDA AMS Livestock, Poultry & Grain Market News