

**DAILY DIRECT HOGS PLANT DELIVERED as of 1:30 PM**

Negotiated Barrow and Gilt:	Carcass Base Price		Live Price
<u>NATIONAL - AMS 2675/LM HG203:</u>			
Range:	\$114.00	\$136.00	*
Weighted Average:	\$123.69		*
Change from Prior Day:	2.32		*
Head Count:	6,089		267

IOWA/MINNESOTA - AMS 2675/LM HG206:

Weighted Average:	\$129.18	*
Change from Prior Day:	(-2.36)	*

WESTERN CORNBELT - AMS 2675/LM HG212:

Weighted Average:	\$129.16	*
Change from Prior Day:	(-2.17)	*

EASTERN CORNBELT - AMS 2675/LM HG210:

Weighted Average:	\$123.23	*
Change from Prior Day:	*	*

\*Price not reported due to confidentiality

NATIONAL DAILY PORK REPORT FOB PLANT- AMS 2498/LM PK602:

Carcass Cutout Values		Change:	
Primal Loin	121.83	(-1.48)	0.79
Primal Butt	109.19		3.43
Primal Picnic	122.94	(-5.54)	
Primal Rib	89.32		4.44
Primal Ham	139.69	(-1.01)	
Primal Belly	112.84	(-9.40)	
Total Loads	204.25		
Pork Cuts	315.67		
Trim/Process Pork	296.87	lds.	
	18.8	lds.	

<u>Weekly USDA By-Product Drop Value (Hog):</u>	5.98	unchanged
Last Week	5.98	

DAILY HOG SLAUGHTER UNDER FIS - AMS 3208/SJ LS710

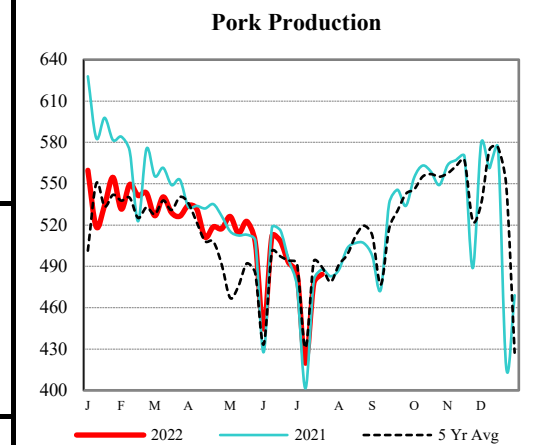
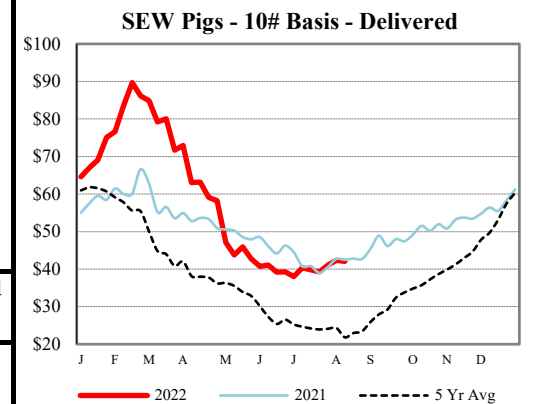
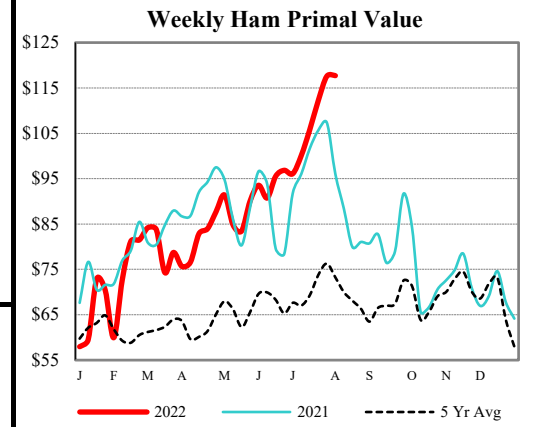
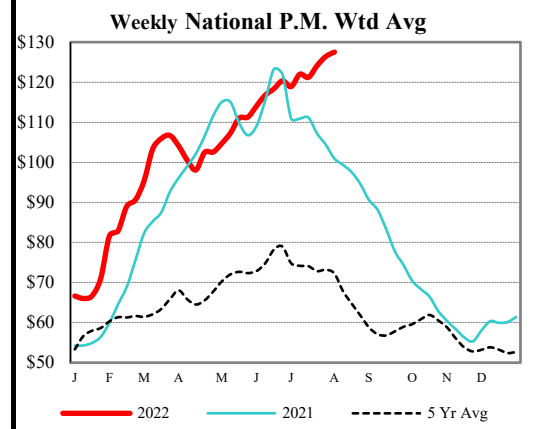
Today (est)	440,000	<b>Saturday:</b>	29,000
Week Ago (est)	452,000		61,000
Year Ago (act)	464,000		78,000
Week to Date (est)	2,309,000		2,338,000
Same Period Last Week (est)	2,271,000		2,332,000
Same Period Last Year (act)	2,330,000		2,408,000

CME Lean Hog Close	High	Low	Change	Settle
AUG	122.35	121.68	(-0.68)	121.73
OCT	100.88	99.58	(-1.05)	100.03
DEC	90.75	89.98	(-0.25)	90.38
FEB	92.90	92.40	0.03	92.75

CME Lean Hog Delayed Futures

US Direct Delivered Feeder Pig Summary for Weekending - AMS 2810 12-Aug-22

Formula, Cash, & Composite Wtd Avg Prices				
		Formula	Cash	Composite
SEW	10-12 lb Basis	44.42	42.04	43.29
Feeder Pigs	40 lb Basis		69.61	69.61



USDA Livestock, Poultry & Grain Market News  
Des Moines, Iowa | PH 515-284-4460  
Email: Desm.LPGMN@usda.gov

<https://mymarketnews.ams.usda.gov/viewReport/2872>