



National Daily Cow and Boneless Beef Summary

Agricultural Marketing Service

Livestock, Poultry, and Grain Market News

January 25, 2024

Boneless Processing Beef and Beef Trimmings

100% Lean Items

[LM_XB 401](#)

National

Central

	Loads	Wtd Avg	Loads	Wtd Avg
Fresh 92-94%				
Fresh 90%	5.1	269.72		
Fresh 85%	5.5	273.00	3.4	286.08
Fresh 81%				
Fresh 65%	2.9	133.66		
Fresh 50%	9.6	95.24		

[LM_XB 405](#)

	Loads	Wtd Avg	Change
Cutter Cow Carcass Cutout		215.54	(10.70)
Inside Rounds - Boxed	2.6	338.29	-1.01
Outside Rounds	1.3	321.69	.00
Eye of Rounds	0.8	346.46	-3.36
Flats and Eyes - Combc	1.8	327.97	.16
Striploins	7.1	448.80	-4.64
S.P.B. - Combo	1.7	325.83	-2.21

Ground Beef

[LM_XB 403](#)

	Loads	Wtd Avg
Fresh 73%	0.8	254.22
Fresh 81%	2.9	292.88
Fresh 93%		
Ground Chuck		0.00
Ground Round	0.3	333.40
Ground Sirloin		

Steer/Heifer/Cow Ground Beef

	Loads	Wtd Avg
Fresh 81%	0.0	0.00
Fresh 93%		
Ground Chuck		

Daily Estimated Slaughter

[SJ_LS 710](#)

Today (est)	126,000
Week Ago (est)	121,000
Year Ago (act)	124,398
Week to Date (est)	492,000
Same Period Last Week (est)	462,000
Same Period Last Year (act)	499,571
Previous Day Est	
Steer and Heifer	99,000
Cow and Bull	27,000

Daily Cow and Bull Bids

[LM_CT 138](#)

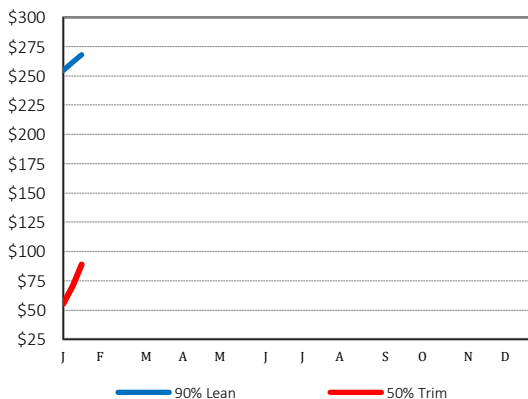
National

	Low	High
Breaker	155.00	215.00
Boner	146.00	219.00
Lean	146.00	219.00
Bulls	160.00	223.00

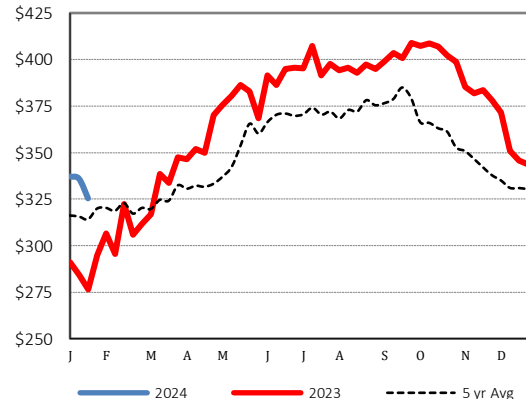
Northwest

	Low	High
Breaker	160.00	190.00
Boner	146.00	197.00
Lean	156.00	207.00
Bulls	174.00	225.00

2024 90% Lean vs 50% Lean



100% Lean Inside Rounds



Source: USDA Livestock, Poultry, and Grain Market News

Des Moines, Iowa | 515-284-4460 | dsm.lpgmn@ams.usda.gov

www.ams.usda.gov/LPSMarketNewsPage