



National Daily Cow and Boneless Beef Summary

Agricultural Marketing Service

Livestock, Poultry, and Grain Market News

April 27, 2023

Boneless Processing Beef and Beef Trimmings

[LM_XB 401](#)

	National		Central	
	Loads	Wtd Avg	Loads	Wtd Avg
Fresh 92-94%				
Fresh 90%	13.0	272.04	9.5	269.55
Fresh 85%	8.7	255.40	5.4	255.31
Fresh 81%				
Fresh 65%				
Fresh 50%	5.5	196.60		

100% Lean Items

[LM_XB 405](#)

	Loads	Wtd Avg	Change
Cutter Cow Carcass Cutout		216.37	(3.74)
Inside Rounds - Boxed	1.8	377.01	-1.05
Outside Rounds	0.0	0.00	0.00
Eye of Rounds	0.6	347.52	-1.64
Flats and Eyes - Combc	3.7	318.44	.00
Striploins	4.1	405.97	-2.25
S.P.B. - Combo	1.3	317.79	.00

Ground Beef

[LM_XB 403](#)

	Loads	Wtd Avg
Fresh 73%	0.7	255.85
Fresh 81%	3.3	283.86
Fresh 93%	1.0	364.55
Ground Chuck		.00
Ground Round	0.2	339.29
Ground Sirloin	0.1	389.94

Steer/Heifer/Cow Ground Beef

	Loads	Wtd Avg
Fresh 81%	0.0	0.00
Fresh 93%		
Ground Chuck		

Daily Estimated Slaughter

[SJ_LS 710](#)

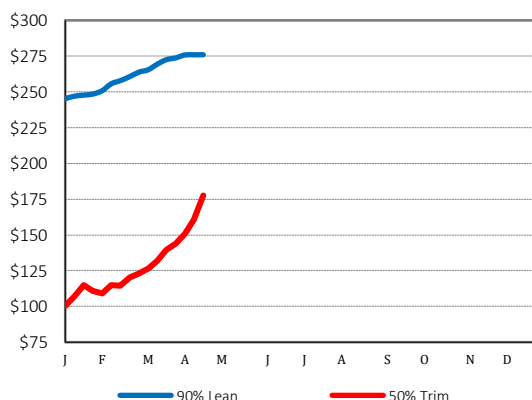
Today (est)	122,000
Week Ago (est)	128,000
Year Ago (act)	123,000
Week to Date (est)	496,000
Same Period Last Week (est)	502,000
Same Period Last Year (act)	497,000
Previous Day Est	Steer and Heifer 96,000
	Cow and Bull 26,000

Daily Cow and Bull Bids

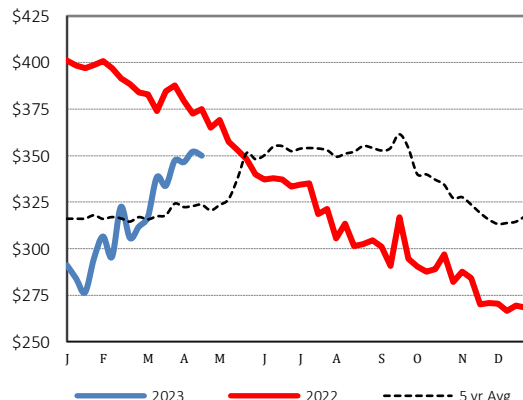
[LM_CT 138](#)

National	Low	High
Breaker	149.00	197.00
Boner	153.00	205.00
Lean	154.00	209.00
Bulls	160.00	233.00
<hr/>		
Northwest	Low	High
Breaker	180.00	190.00
Boner	170.00	200.00
Lean	170.00	204.00
Bulls	177.00	233.00

2022 90% Lean vs 50% Lean



100% Lean Inside Rounds



Source: USDA Livestock, Poultry, and Grain Market News

Des Moines, Iowa | 515-284-4460 | dsm.lpgmn@ams.usda.gov

www.ams.usda.gov/LPSMarketNewsPage