



National Daily Cow and Boneless Beef Summary

Agricultural Marketing Service

Livestock, Poultry, and Grain Market News

April 24, 2023

Boneless Processing Beef and Beef Trimmings

[LM_XB 401](#)

	National		Central	
	Loads	Wtd Avg	Loads	Wtd Avg
Fresh 92-94%	4.8	289.89	4.8	289.89
Fresh 90%	17.7	273.88		
Fresh 85%	14.6	257.12	6.0	254.66
Fresh 81%	3.2	236.83		
Fresh 65%	3.6	197.07		
Fresh 50%	8.3	178.28		

100% Lean Items

[LM_XB 405](#)

	Loads	Wtd Avg	Change
Cutter Cow Carcass Cutout		217.77	.11
Inside Rounds - Boxed	1.7	374.76	-1.90
Outside Rounds	0.0	0.00	0.00
Eye of Rounds	1.0	366.78	4.09
Flats and Eyes - Combc	0.0	0.00	0.00
Striploins	7.2	386.83	2.76
S.P.B. - Combo	0.0	0.00	0.00

Ground Beef

[LM_XB 403](#)

	Loads	Wtd Avg
Fresh 73%	0.6	248.26
Fresh 81%	1.6	278.81
Fresh 93%	0.4	364.08
Ground Chuck	0.3	292.01
Ground Round		
Ground Sirloin		

Steer/Heifer/Cow Ground Beef

	Loads	Wtd Avg
Fresh 81%	0.0	0.00
Fresh 93%		
Ground Chuck		

Daily Estimated Slaughter

[SJ_LS 710](#)

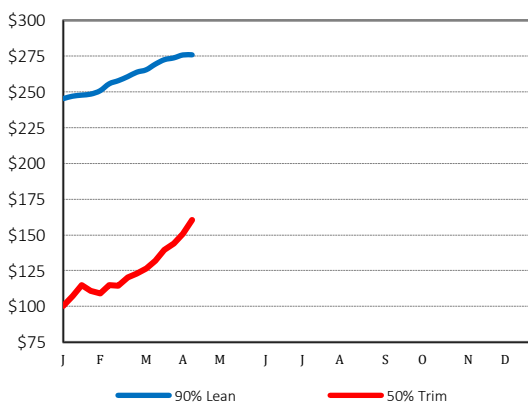
Today (est)	124,000
Week Ago (est)	121,000
Year Ago (act)	124,000
Week to Date (est)	0
Same Period Last Week (est)	0
Same Period Last Year (act)	0
Previous Day Est	Steer and Heifer 80,000
	Cow and Bull 28,000

Daily Cow and Bull Bids

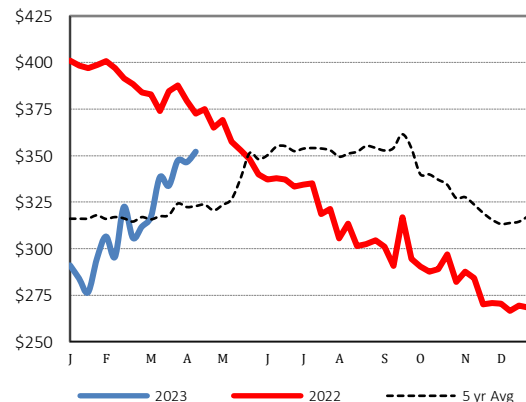
[LM_CT 138](#)

National	Low	High
Breaker	146.00	192.00
Boner	147.00	210.00
Lean	155.00	204.00
Bulls	160.00	233.00
<hr/>		
Northwest	Low	High
Breaker	180.00	190.00
Boner	170.00	200.00
Lean	170.00	204.00
Bulls	177.00	233.00

2022 90% Lean vs 50% Lean



100% Lean Inside Rounds



Source: USDA Livestock, Poultry, and Grain Market News

Des Moines, Iowa | 515-284-4460 | dsm.lpgmn@ams.usda.gov

www.ams.usda.gov/LPSMarketNewsPage