



## National Daily Cow and Boneless Beef Summary

Agricultural Marketing Service

Livestock, Poultry, and Grain Market News

April 10, 2023

### Boneless Processing Beef and Beef Trimmings

[LM\\_XB 401](#)

	National		Central	
	Loads	Wtd Avg	Loads	Wtd Avg
Fresh 92-94%	4.9	289.10	4.9	289.10
Fresh 90%	9.6	274.55		
Fresh 85%	13.9	257.42	4.2	259.94
Fresh 81%				
Fresh 65%	3.6	171.16		
Fresh 50%				

### 100% Lean Items

[LM\\_XB 405](#)

	Loads	Wtd Avg	Change
Cutter Cow Carcass Cutout		215.52	(2.07)
Inside Rounds - Boxed	1.4	367.98	8.60
Outside Rounds	0.0	0.00	0.00
Eye of Rounds	0.9	327.27	1.11
Flats and Eyes - Combc	1.3	316.85	-.75
Striploins	8.2	385.14	-3.47
S.P.B. - Combo	1.1	308.38	-.36

### Ground Beef

[LM\\_XB 403](#)

	Loads	Wtd Avg
Fresh 73%	5.0	213.59
Fresh 81%	4.0	255.87
Fresh 93%	1.1	347.86
Ground Chuck	0.5	264.35
Ground Round		
Ground Sirloin		

### Steer/Heifer/Cow Ground Beef

	Loads	Wtd Avg
Fresh 81%	0.0	0.00
Fresh 93%		
Ground Chuck		

### Daily Estimated Slaughter

[SJ\\_LS 710](#)

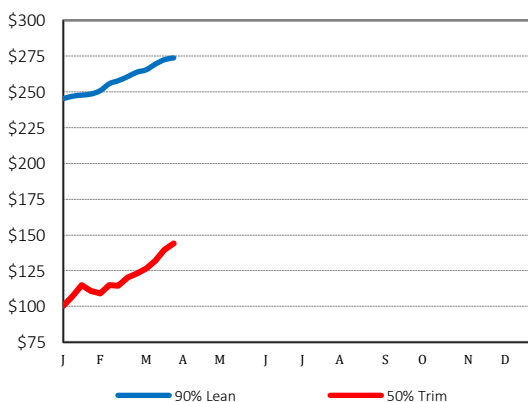
Today (est)	113,000
Week Ago (est)	117,000
Year Ago (act)	123,000
Week to Date (est)	0
Same Period Last Week (est)	0
Same Period Last Year (act)	0
Previous Day Est	Steer and Heifer 80,000
	Cow and Bull 25,000

### Daily Cow and Bull Bids

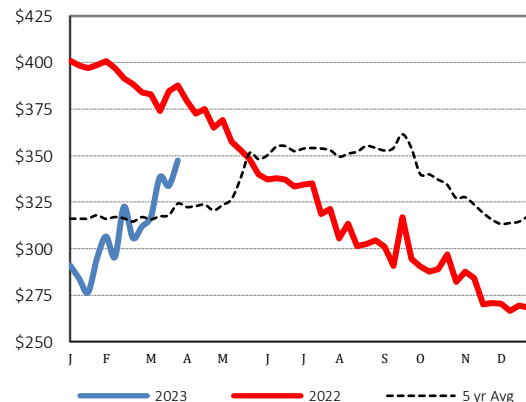
[LM\\_CT 138](#)

National	Low	High
Breaker	144.00	210.00
Boner	155.00	196.00
Lean	155.00	202.00
Bulls	160.00	230.00
<hr/>		
Northwest	Low	High
Breaker	178.00	210.00
Boner	175.00	188.00
Lean	175.00	202.00
Bulls	174.00	230.00

### 2022 90% Lean vs 50% Lean



### 100% Lean Inside Rounds



Source: USDA Livestock, Poultry, and Grain Market News

Des Moines, Iowa | 515-284-4460 | [dsm.lpgmn@ams.usda.gov](mailto:dsm.lpgmn@ams.usda.gov)

[www.ams.usda.gov/LPSMarketNewsPage](http://www.ams.usda.gov/LPSMarketNewsPage)