



## National Daily Cow and Boneless Beef Summary

Agricultural Marketing Service

Livestock, Poultry, and Grain Market News

March 27, 2023

### Boneless Processing Beef and Beef Trimmings

[LM\\_XB 401](#)

	National		Central	
	Loads	Wtd Avg	Loads	Wtd Avg
Fresh 92-94%	4.2	283.92	4.2	283.92
Fresh 90%	7.6	273.16		
Fresh 85%	10.8	251.81	5.8	255.28
Fresh 81%	5.6	230.64		
Fresh 65%	4.7	166.59		
Fresh 50%	4.6	145.52		

### 100% Lean Items

[LM\\_XB 405](#)

	Loads	Wtd Avg	Change
Cutter Cow Carcass Cutout		214.37	(1.13)
Inside Rounds - Boxed	3.3	351.33	-7.54
Outside Rounds	0.0	0.00	0.00
Eye of Rounds	0.8	327.51	-2.93
Flats and Eyes - Combc	4.8	311.65	3.55
Striploins	5.9	414.62	3.08
S.P.B. - Combo	3.7	310.64	2.66

### Ground Beef

[LM\\_XB 403](#)

	Loads	Wtd Avg
Fresh 73%	2.6	211.73
Fresh 81%	6.5	214.28
Fresh 93%	0.7	359.14
Ground Chuck	1.7	247.52
Ground Round		
Ground Sirloin		

### Steer/Heifer/Cow Ground Beef

	Loads	Wtd Avg
Fresh 81%	0.0	0.00
Fresh 93%		
Ground Chuck		

### Daily Estimated Slaughter

[SJ\\_LS 710](#)

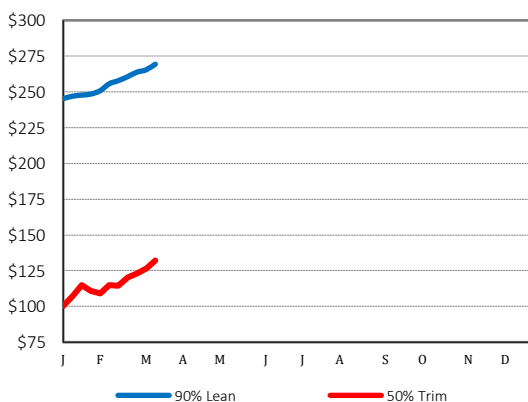
Today (est)	125,000
Week Ago (est)	125,000
Year Ago (act)	120,000
Week to Date (est)	0
Same Period Last Week (est)	0
Same Period Last Year (act)	0
Previous Day Est	Steer and Heifer 82,000
	Cow and Bull 26,000

### Daily Cow and Bull Bids

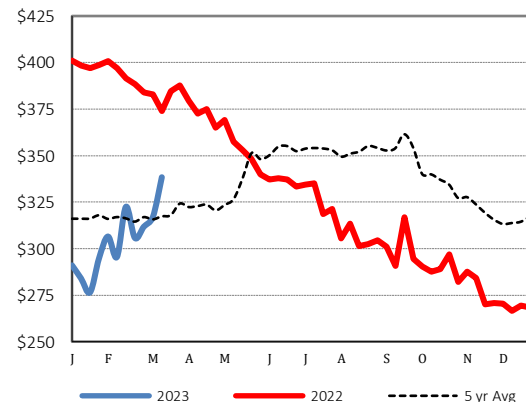
[LM\\_CT 138](#)

National	Low	High
Breaker	144.00	207.00
Boner	155.00	196.00
Lean	155.00	200.00
Bulls	160.00	228.00
<hr/>		
Northwest	Low	High
Breaker	176.00	205.00
Boner	170.00	196.00
Lean	170.00	200.00
Bulls	172.00	228.00

### 2022 90% Lean vs 50% Lean



### 100% Lean Inside Rounds



Source: USDA Livestock, Poultry, and Grain Market News

Des Moines, Iowa | 515-284-4460 | [dsm.lpgmn@ams.usda.gov](mailto:dsm.lpgmn@ams.usda.gov)

[www.ams.usda.gov/LPSMarketNewsPage](http://www.ams.usda.gov/LPSMarketNewsPage)