

[AMS 2453/LM_XB403](#)

DAILY ESTIMATED CUTOUT VALUES

	Choice 600-900#	Select 600-900#	Choice/Select Spread
Current Cutout Values:	268.05	242.93	25.12
Change from prior day:	3.39	3.06	
Primal Rib	383.45	315.32	
Primal Chuck	221.03	216.79	
Primal Round	214.18	210.50	
Primal Loin	378.20	311.15	
Primal Brisket	229.75	213.59	
Primal Short Plate	195.25	195.25	
Primal Flank	161.77	155.18	
			Load Count:
			Total 121
			Choice 66
			Select 33
			Trimming 8
			Grinds 15

Fresh 50% Trimmings 8 Loads @ 112.38

[AMS 2829/NW_LS441](#)

USDA BY-PRODUCT DROP VALUE (STEER) - DAILY

13.77 Change: (-0.18)

[AMS 2466/LM_CT100](#)

5 AREA WEEKLY ACCUMULATED WEIGHTED AVG CATTLE PRICE

As of 10:00 am	Head Count	Avg Weight	Avg Price
Live Steer	0	0	0.00
Live Heifer	0	0	0.00
Dressed Steer	42	829	235.00
Dressed Heifer	0	0	0.00

[AMS 3208/SJ_LS710](#)

DAILY CATTLE SLAUGHTER

	Steer and Heifer Cow and Bull	Saturday
Today	126,000	
Week Ago	124,000	
Year Ago (act)	121,000	
Week to Date	254,000	
Same Period Last Week	375,000	
Same Period Last Year	253,000	
Previous Day	100,000	

[AMS 3209/SJ_LS712](#)

BEEF PRODUCTION

	7/2/2022 (Estimate)	Last Week (Estimate)	Last Year (Actual)
Slaughter	636,000	666,000	628,000
Live Weights	1343	1344	1347
Dressed Weights	810	811	816
Beef Production (millions of pounds)	514.5	539.1	512.0

[AMS 2825/NW_LS410](#)

USDA BEEF CARCASS PRICE EQUIVALENT INDEX VALUE

	Choice 600-900#	Select 600-900#	Dressing percent:	
			Steer	Heifer
Change	1.87	1.71	63.94	63.72

[AMS 2455/LM_XB405](#)

USDA NATIONAL CUTTER COW CARCASS CUTOUT

220.33 0.33 90% lean: 278.10

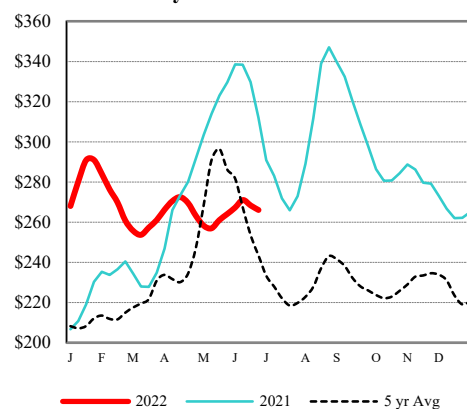
[CME LIVE CATTLE](#)

	High	Low	Change	Settle
AUG	134.98	133.05	1.58	134.50
OCT	140.48	138.80	1.48	139.95
DEC	145.73	144.20	1.30	145.35

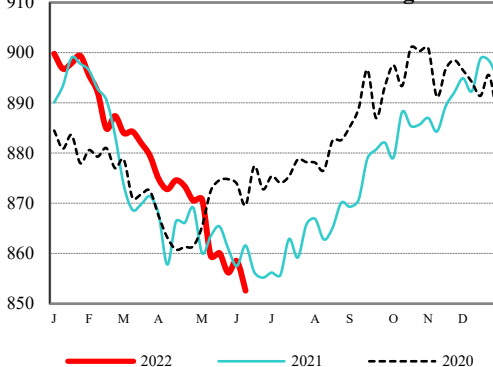
[CME FEEDER CATTLE](#)

	High	Low	Change	Settle
AUG	173.90	172.08	0.60	173.30
SEP	177.43	175.53	0.98	177.08
OCT	180.60	178.58	1.40	180.38

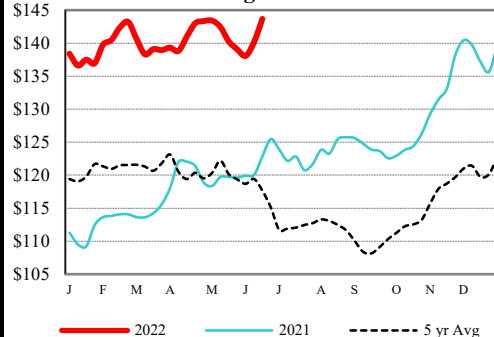
Weekly Choice Cutout



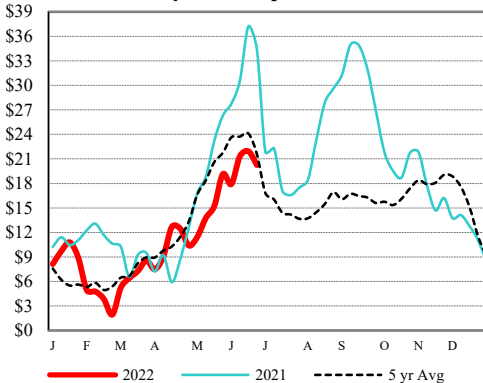
LMR Steer/Heifer Dressed Weights



5 Area Weekly Wtd Avg Steer Price



Weekly Ch/Se Spread



USDA Livestock, Poultry & Grain Market News

Des Moines, Iowa | PH 515-284-4460

Email: Desm.LPGMN@usda.gov

<https://mymarketnews.ams.usda.gov/viewReport/2870>

[USDA AMS Livestock, Poultry & Grain Market News](#)