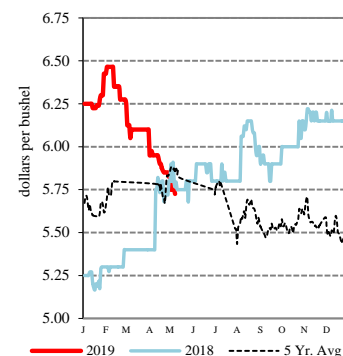


EXPORT	PRICE (\$/bu)	CHANGE (¢/bu)	BASIS (¢)	CHANGE
Atlantic - JO_GR850				
Soybeans	7.8750	-6.75	-15.00 N	UNCH
SRW	4.3200	+12.25	-5.00 N	UNCH
Chicago - GX_GR110				
Corn	3.1650 - 3.3750	+4.75	-40.00 N to -19.00 N	UNCH
Soybeans	7.4750 - 7.6250	-6.75	-55.00 N to -40.00 N	UNCH
SRW	4.2000 - 4.3700	+12.25	-17.00 N to Opt N	UNCH
Gulf - JO_GR112				
Corn	3.9350 - 4.0850	+5.00	+46.00 K to +61.00 K	UNCH
Soybeans	8.2750 - 8.4250	-5.75 to -6.75	+25.00 N to +40.00 N	+1.00 to UNCH
SRW	5.1200 - 5.1900	+12.25	+75.00 N to +82.00 N	UNCH
12 HRW	NQ	NQ	NQ	NQ
PNW - JO_GR110				
SRW	5.70 - 5.80	-5.00 to UNCH	+133.00 N to +143.00 N	-17.25 to -12.25
Ord HRW	5.46 - 5.56	+20.00 to +10.00	+149.00 N to +159.00 N	+10.00 to UNCH
Toledo - GX_GR111				
Corn	3.4850 - 3.5250	+4.75	-8.00 N to -4.00 N	UNCH
Soybeans	7.5250 - 7.5750	-6.75	-50.00 N to -45.00 N	UNCH
SRW	4.2500	+12.25	-12.00 N	UNCH

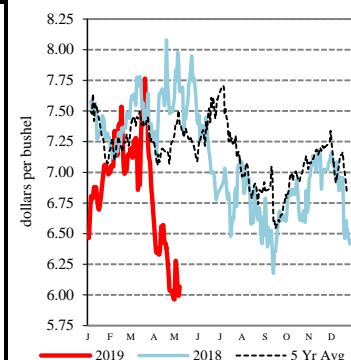
All prices are reported in dollars/bushel, except soybean and corn oil is in cents/lb. and soybean meal is in dollars/ton.

SWW - Portland, OR



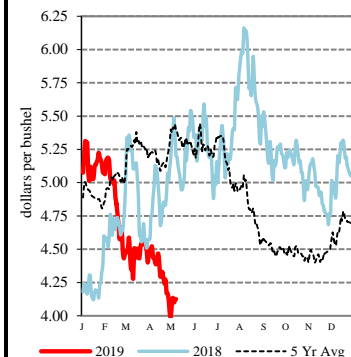
TERMINAL	PRICE (\$/bu)	CHANGE (¢/bu)	BASIS (¢)	CHANGE
Kansas City - SJ_GR112				
Corn	3.47 - 3.66	+5.00	-10.00 N to +9.00 N	UNCH
Soybeans	7.53 - 7.78	-6.00	-50.00 N to -25.00 N	UNCH
Ord HRW	3.87 - 4.24	+10.00	-10.00 N to +27.00 N	UNCH
Minneapolis - MS_GR110				
14 DNS/NS Del Chicag	5.9800	+1.00	+80.00 N	UNCH
Oats	2.9625 - 3.4325	-7.00 to -3.00	+13.00 N to +60.00 N	-4.00 to UNCH
Omaha - WH_GR110				
Corn	3.52 - 3.57	+5.00 to +7.00	-4.50 N to +0.50 N	+0.25 to +2.25
Soybeans	7.43 - 7.45	-6.00	-59.50 N to -57.50 N	+0.75
Portland - JO_GR111				
11.5 HRW	5.67 - 5.77	+20.00 to +10.00	+170.00 N to +180.00 N	+10.00 to UNCH
14 DNS	6.08 - 6.18	-9.00 to -4.00	+90.00 N to +100.00 N	-10.00 to -5.00

14% DNS - Minneapolis, MN



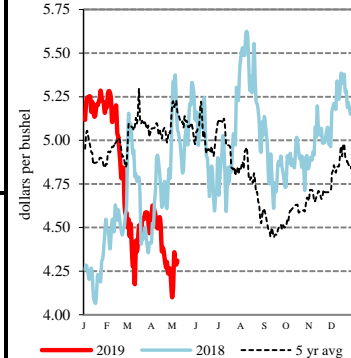
RIVER	PRICE (\$/bu)	CHANGE (¢/bu)	BASIS (¢)	CHANGE
So. Iowa, Mississippi River - MS_GR114				
Corn	3.2150 - 3.3050	+2.75 to +4.75	-35.00 N to -26.00 N	-2.00 to UNCH
Soybeans	7.4450 - 7.5450	-8.75 to -6.75	-58.00 N to -48.00 N	-2.00 to UNCH
St. Louis, Mississippi River - JC_GR110				
Corn	3.6600	+1.00	+9.50 N	-3.75
Soybeans	7.9800	-7.00	-4.50 N	-0.25
SRW	4.6700	+13.00	+30.00 N	+0.75
Memphis, Mississippi River - LR_GR110				
Corn	3.6450 - 3.6650	+4.75 to -15.25	+8.00 N to +10.00 N	UNCH to -20.00
Soybeans	7.9250 - 8.0550	-6.75	-10.00 N to +3.00 N	UNCH
SRW	NQ	NQ	NQ	NQ
Cincinnati, Ohio River - GX_GR114				
Corn	3.4450 - 3.5650	-5.25 to -7.25	-12.00 N to Opt N	-10.00 to -12.00
Soybeans	7.8150 - 7.8550	-6.75 to -9.75	-21.00 N to -17.00 N	UNCH to -3.00
SRW	NQ	NQ	NQ	NQ
Mt. Vernon, Indiana, Ohio River - GX_GR114				
Corn	3.5650 - 3.6150	-0.25 to -2.25	Opt N to +5.00 N	-5.00 to -7.00
Soybeans	7.8750 - 7.8850	-6.75	-15.00 N to -14.00 N	UNCH
SRW	NQ	NQ	NQ	NQ
No. Peoria, Illinois River - GX_GR112				
Corn	3.3450 - 3.3750	+3.75	-22.00 N to -19.00 N	-1.00
Soybeans	7.6050 - 7.6750	-6.75 to -4.75	-42.00 N to -35.00 N	UNCH to +2.00

Ordinary HRW - Kansas City, KS



PROCESSOR	PRICE	CHANGE	BASIS	CHANGE
Central IL				
Corn	3.3650 - 3.5650	+4.75	-20.00 N to Opt N	UNCH
Soybeans	7.6850 - 7.7750	-6.75	-34.00 N to -25.00 N	UNCH
Crude SB Oil	26.01 - 26.21	-0.18	-60.00 N to -40.00 N	UNCH
48 SB Meal	282.30 - 286.30	UNCH	-5.00 N to -1.00 N	UNCH
Crude Corn Oil - Rail	27.00	UNCH	N/A	N/A

SRW - Chicago, IL



FUTURES		PRICE	CHANGE	PRICE	CHANGE
CME Group	Corn	K May 19 3.4750	+5.00 N Jul 19 3.5650	+4.75	
	Soybeans	K May 19 7.9100	-6.00 N Jul 19 8.0250	-6.75	
	Wheat (SRW)	K May 19 4.3125	+12.25 N Jul 19 4.3700	+12.25	
	Oats	K May 19 2.9975	-3.00 N Jul 19 2.8325	-3.00	
MGEX	HRS Wheat (DNS)	K May 19 5.0775	-1.00 N Jul 19 5.1800	+1.00	
KCBOT	HRW Wheat	K May 19 3.9700	+17.75 N Jul 19 3.9700	+10.00	

USDA Livestock, Poultry & Grain Market News
 210 Walnut Street, Room 767
 Des Moines, Iowa 50309
 Phone: 515-284-4460
 Email: Desm.LPGMN@ams.usda.gov
www.ams.usda.gov/LPSMarketNewsPage