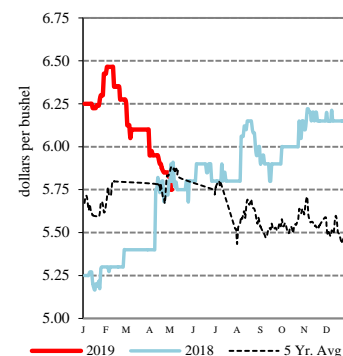


EXPORT	PRICE (\$/bu)	CHANGE (¢/bu)	BASIS (¢)	CHANGE
Atlantic - JO_GR850				
Soybeans	8.1525	-12.00	-15.00 N	UNCH
SRW	NQ	NQ	NQ	NQ
Chicago - GX_GR110				
Corn	3.2425 - 3.4225	-6.50	-40.00 N to -22.00 N	UNCH
Soybeans	7.7225 - 7.8025	-12.00	-58.00 N to -50.00 N	UNCH
SRW	4.2025 - 4.3725	-0.75	-17.00 N to Opt N	UNCH
Gulf - JO_GR112				
Corn	4.0175 - 4.1575	-7.25 to -3.25	+46.00 K to +60.00 K	UNCH to +4.00
Soybeans	8.5325 - 8.7025	-12.25 to -4.25	+23.00 N to +40.00 N	No Comp
SRW	5.1125 - 5.1225	+1.25 to -2.75	+74.00 N to +75.00 N	No Comp
12 HRW	NQ	NQ	NQ	NQ
PNW - JO_GR110				
SWW	5.60 - 5.90	UNCH	+122.75 N to +152.75 N	+0.75
Ord HRW	5.42 - 5.67	+1.00	+139.00 N to +164.00 N	UNCH
Toledo - GX_GR111				
Corn	3.4575 - 3.5625	-13.25 to -6.50	-10.00 K to -8.00 N	-6.00 to UNCH
Soybeans	7.6750 - 7.8525	-19.00 to -12.00	-50.00 K to -45.00 N	-7.00 to UNCH
SRW	4.1300 - 4.1600	-5.00 to -7.00	-15.00 K to -12.00 K	-5.00 to -7.00

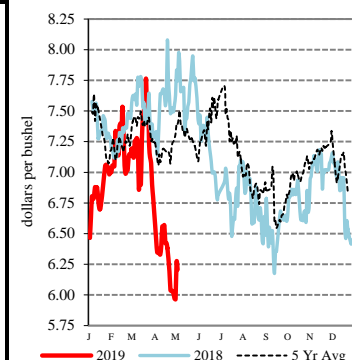
All prices are reported in dollars/bushel, except soybean and corn oil is in cents/lb. and soybean meal is in dollars/ton.

SWW - Portland, OR



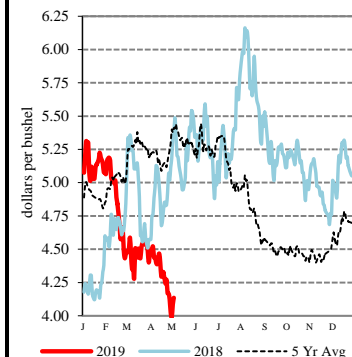
TERMINAL	PRICE (\$/bu)	CHANGE (¢/bu)	BASIS (¢)	CHANGE
Kansas City - SJ_GR112				
Corn	3.54 - 3.73	-7.00	-10.00 N to +9.00 N	UNCH
Soybeans	7.80 - 8.05	-12.00 to -7.00	-50.00 N to -25.00 N	UNCH to +5.00
Ord HRW	3.93 - 4.30	+1.00	-10.00 N to +27.00 N	UNCH
Minneapolis - MS_GR110				
14 DNS/NS Del Chicag	5.9925	-5.75	+85.00 N	-5.00
Oats	2.9350 - 3.3750	-9.00 to -6.00	+16.00 N to +60.00 N	-2.00 to UNCH
Omaha - WH_GR110				
Corn	3.57 - 3.63	-7.00	-7.25 N to -1.25 N	-0.50
Soybeans	7.60 - 7.70	-12.00	-70.25 N to -60.25 N	UNCH
Portland - JO_GR111				
11.5 HRW	5.63 - 5.88	+1.00	+160.00 N to +185.00 N	UNCH
14 DNS	6.14 - 6.19	-1.00	+100.00 N to +105.00 N	UNCH

14% DNS - Minneapolis, MN



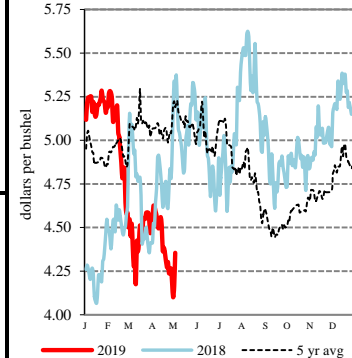
RIVER	PRICE (\$/bu)	CHANGE (¢/bu)	BASIS (¢)	CHANGE
So. Iowa, Mississippi River - MS_GR114				
Corn	3.3525 - 3.4225	-8.50 to -6.50	-29.00 N to -22.00 N	-2.00 to UNCH
Soybeans	7.7825 - 7.8525	-12.00	-52.00 N to -45.00 N	UNCH
St. Louis, Mississippi River - JC_GR110				
Corn	3.7600 - 3.7800	-6.00 to -7.00	+11.75 N to +13.75 N	+0.50 to -0.50
Soybeans	8.2200 - 8.2500	-11.00 to -12.00	-8.25 N to -5.25 N	+1.00 to UNCH
SRW	4.5800 - 4.6700	-1.00	+20.75 N to +29.75 N	-0.25
Memphis, Mississippi River - LR_GR110				
Corn	3.7425 - 3.8425	-6.50 to -11.50	+10.00 N to +20.00 N	UNCH to -5.00
Soybeans	8.2025 - 8.2325	-12.00	-10.00 N to -7.00 N	UNCH
SRW	NQ	NQ	NQ	NQ
Cincinnati, Ohio River - GX_GR114				
Corn	3.6425 - 3.6825	-6.50	Opt N to +4.00 N	UNCH
Soybeans	8.0925 - 8.1925	-12.00 to -6.00	-21.00 N to -11.00 N	UNCH to +6.00
SRW	NQ	NQ	NQ	NQ
Mt. Vernon, Indiana, Ohio River - GX_GR114				
Corn	3.5425 - 3.7225	-21.50 to -11.50	-10.00 N to +8.00 N	-15.00 to -5.00
Soybeans	8.1325 - 8.1625	-14.00 to -12.00	-17.00 N to -14.00 N	-2.00 to UNCH
SRW	NQ	NQ	NQ	NQ
No. Peoria, Illinois River - GX_GR112				
Corn	3.4525 - 3.5325	-9.50 to -7.50	-19.00 N to -11.00 N	-3.00 to -1.00
Soybeans	7.8925 - 8.0025	-15.00 to -9.00	-41.00 N to -30.00 N	-3.00 to +3.00

Ordinary HRW - Kansas City, KS



PROCESSOR	PRICE	CHANGE	BASIS	CHANGE
Central IL				
Corn	3.4425 - 3.6425	-6.50	-20.00 N to Opt N	UNCH
Soybeans	7.9525 - 8.1025	-12.00 to -10.00	-35.00 N to -20.00 N	UNCH to +2.00
Crude SB Oil	25.84 - 26.09	-0.23	-100.00 K to -75.00 K	UNCH
48 SB Meal	291.60 - 295.60	-1.60	-5.00 N to -1.00 N	UNCH
Crude Corn Oil - Rail	28.35	UNCH	N/A	N/A

SRW - Chicago, IL



FUTURES	PRICE	CHANGE	PRICE	CHANGE
CME Group				
Corn	K May 19 3.5575	-7.25 N Jul 19 3.6425	-6.50	
Soybeans	K May 19 8.1750	-12.00 N Jul 19 8.3025	-12.00	
Wheat (SRW)	K May 19 4.2800	UNCH N Jul 19 4.3725	-0.75	
Oats	K May 19 2.9550	-5.75 N Jul 19 2.7750	-6.50	
MGEX	HRS Wheat (DNS)	K May 19 4.9900	-0.50 N Jul 19 5.1425	-0.75
KCBOT	HRW Wheat	K May 19 3.9425	+1.25 N Jul 19 4.0300	+1.50

USDA Livestock, Poultry & Grain Market News

210 Walnut Street, Room 767

Des Moines, Iowa 50309

Phone: 515-284-4460

Email: Desm.LPGMN@ams.usda.gov

www.ams.usda.gov/LPSMarketNewsPage