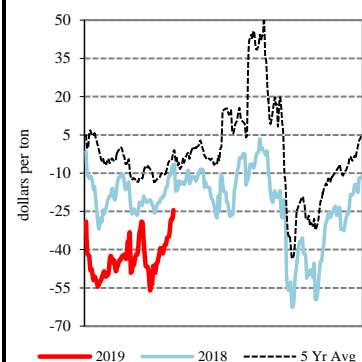


EXPORT	PRICE (\$/bu)	CHANGE (¢/bu)	BASIS (¢)	CHANGE
Atlantic - JO_GR850				
Soybeans	8.3900	-8.50	-15.00 N	No Comp
SRW	NQ	NQ	NQ	NQ
Chicago - GX_GR110				
Corn	3.1825 - 3.4025	+1.25	-35.00 K to -13.00 K	UNCH
Soybeans	7.9625 - 8.0125	-6.25	-45.00 K to -40.00 K	UNCH
SRW	4.0150 - 4.1850	-8.25	-17.00 K to Opt K	UNCH
Gulf - JO_GR112				
Corn	3.9925 - 4.1225	+1.25	+46.00 K to +59.00 K	UNCH
Soybeans	8.6925 - 8.8125	-6.25	+28.00 K to +40.00 K	UNCH
SRW	5.0550 - 5.1350	-6.25 to -8.25	+87.00 K to +95.00 K	+2.00 to UNCH
12 HRW	NQ	NQ	NQ	NQ
PNW - JO_GR110				
SWW	5.75 - 5.90	UNCH	+156.50 K to +171.50 K	+8.25
Ord HRW	5.35 - 5.60	-4.00	+149.00 K to +174.00 K	UNCH
Toledo - GX_GR111				
Corn	3.4925 - 3.5250	+1.25 to +2.50	-4.00 K to -10.00 N	UNCH to No Comp
Soybeans	7.9825 - 8.0900	-6.25 to -0.50	-43.00 K to -45.00 N	UNCH to No Comp
SRW	4.0850 - 4.1350	-8.25	-10.00 K to -5.00 K	UNCH

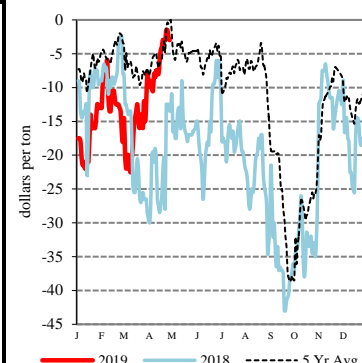
All prices are reported in dollars/bushel, except soybean and corn oil is in cents/lb. and soybean meal is in dollars/ton.

IL River So. of Peoria Bean Basis



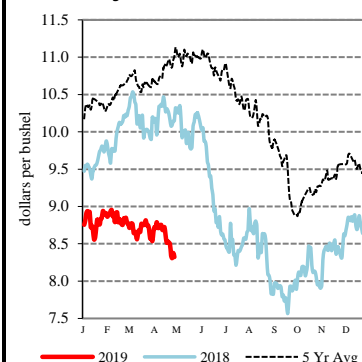
TERMINAL	PRICE (\$/bu)	CHANGE (¢/bu)	BASIS (¢)	CHANGE
Kansas City - SJ_GR112				
Corn	3.49 - 3.71	+1.00	-4.00 K to +18.00 K	UNCH
Soybeans	7.96 - 8.11	-7.00	-45.00 K to -30.00 K	UNCH
Ord HRW	3.76 - 4.21	-4.00	-10.00 K to +35.00 K	UNCH
Minneapolis - MS_GR110				
14 DNS/NS Del Chicago	5.9400 - 5.9900	-0.50	+87.00 N to +92.00 N	UNCH
Oats	2.8125 - 3.4825	-11.00 to -9.00	-7.00 N to +60.00 N	-2.00 to UNCH
Omaha - WH_GR110				
Corn	3.56 - 3.65	+1.00 to +4.00	+2.75 K to +2.50 N	-0.25 to No Comp
Soybeans	7.81 - 7.94	-7.00 to +6.00	-60.25 K to -60.00 N	-0.75 to No Comp
Portland - JO_GR111				
11.5 HRW	5.56 - 5.81	-4.00	+170.00 K to +195.00 K	UNCH
14 DNS	5.95 - 6.05	-1.00	+105.00 K to +115.00 K	UNCH

IL River So. of Peoria Corn Basis

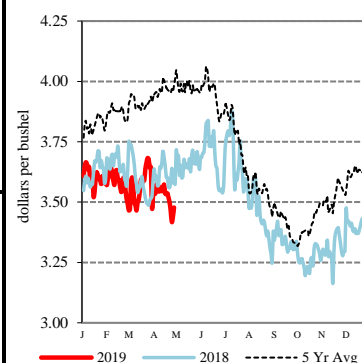


RIVER	PRICE (\$/bu)	CHANGE (¢/bu)	BASIS (¢)	CHANGE
So. Iowa, Mississippi River - MS_GR114				
Corn	3.3650 - 3.4025	+0.75 to +3.25	-26.00 N to -13.00 K	No Comp to +2.00
Soybeans	8.0125 - 8.0800	-6.25 to -6.75	-40.00 K to -46.00 N	UNCH to No Comp
St. Louis, Mississippi River - JC_GR110				
Corn	3.7200 - 3.7500	+3.00 to +5.00	+18.75 K to +21.75 K	+1.75 to +3.75
Soybeans	8.4200 - 8.4500	-3.00	+0.75 K to +3.75 K	+3.25
SRW	4.5500 - 4.5900	-8.00 to -4.00	+36.50 K to +40.50 K	+0.25 to +4.25
Memphis, Mississippi River - LR_GR110				
Corn	3.5825 - 3.7325	-9.75 to +1.25	+5.00 K to +20.00 K	-11.00 to UNCH
Soybeans	8.3125 - 8.4125	-6.25 to +1.75	-10.00 K to Opt K	UNCH to +8.00
SRW	NQ	NQ	NQ	NQ
Cincinnati, Ohio River - GX_GR114				
Corn	3.5950 - 3.6225	+4.50 to +2.25	-3.00 N to +9.00 K	No Comp to +1.00
Soybeans	8.2900 - 8.3325	-5.50 to -5.25	-25.00 N to -8.00 K	No Comp to +1.00
SRW	NQ	NQ	NQ	NQ
Mt. Vernon, Indiana, Ohio River - GX_GR114				
Corn	3.6325 - 3.6925	+2.25 to +7.25	+10.00 K to +16.00 K	+1.00 to +6.00
Soybeans	8.3300 - 8.3525	+3.50 to -2.50	-21.00 N to -6.00 K	No Comp
SRW	NQ	NQ	NQ	NQ
No. Peoria, Illinois River - GX_GR112				
Corn	3.4625 - 3.5225	+2.25 to +4.25	-7.00 K to -1.00 K	+1.00 to +3.00
Soybeans	8.1225 - 8.1925	-5.25 to -4.25	-29.00 K to -22.00 K	+1.00 to +2.00

Soybeans - Central IL



Corn - Central IL



PROCESSOR	PRICE	CHANGE	BASIS	CHANGE
Central IL				
Corn	3.4250 - 3.6250	+2.50	-20.00 N to Opt N	No Comp
Soybeans	8.1625 - 8.2925	-6.25 to -3.25	-25.00 K to -12.00 K	UNCH to +3.00
Crude SB Oil	26.58 - 26.83	-0.30	-100.00 K to -75.00 K	UNCH
48 SB Meal	295.00 - 296.00	-1.20	-1.00 K to Opt K	UNCH
Crude Corn Oil - Rail	26.50	UNCH	N/A	N/A

FUTURES				PRICE	CHANGE			PRICE	CHANGE
CME Group	Corn	K	May 19	3.5325	+1.25	N	Jul 19	3.6250	+0.75
	Soybeans	K	May 19	8.4125	-6.25	N	Jul 19	8.5400	-6.75
	Wheat (SRW)	K	May 19	4.1850	-8.25	N	Jul 19	4.2875	-6.50
	Oats	K	May 19	3.0500	-12.25	N	Jul 19	2.8825	-9.25
MGEX	HRS Wheat (DNS)	K	May 19	4.9025	-0.50	N	Jul 19	5.0700	-0.50
KCBOT	HRW Wheat	K	May 19	3.8625	-3.50	N	Jul 19	3.9400	-3.00

USDA Livestock, Poultry & Grain Market News

210 Walnut Street, Room 767

Des Moines, Iowa 50309

Phone: 515-284-4460

Email: Desm.LPGMN@ams.usda.gov

www.ams.usda.gov/LPSMarketNewsPage