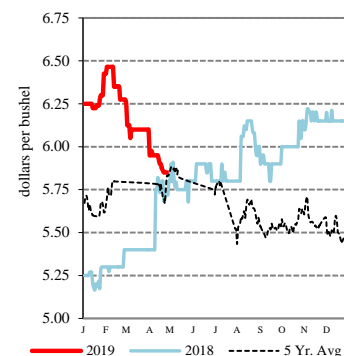


EXPORT	PRICE (\$/bu)	CHANGE (¢/bu)	BASIS (¢)	CHANGE
<a href="#">Atlantic - JO_GR850</a>				
Soybeans	8.4750	-6.25	Opt K	UNCH
SRW	NQ	NQ	NQ	NQ
<a href="#">Chicago - GX_GR110</a>				
Corn	3.1700 - 3.3900	+0.75 to +2.75	-35.00 K to -13.00 K	UNCH to +2.00
Soybeans	8.0250 - 8.0750	-6.25	-45.00 K to -40.00 K	UNCH
SRW	4.0975 - 4.2675	-8.25	-17.00 K to Opt K	UNCH
<a href="#">Gulf - JO_GR112</a>				
Corn	3.9800 - 4.1100	+0.75	+46.00 K to +59.00 K	UNCH
Soybeans	8.7550 - 8.8750	-6.25 to -3.25	+28.00 K to +40.00 K	UNCH to +3.00
SRW	5.1175 - 5.2175	-8.25	+85.00 K to +95.00 K	UNCH
12 HRW	5.0175 - 5.1975	-10.00	+112.00 K to +130.00 K	UNCH
<a href="#">PNW - JO_GR110</a>				
SRW	5.75 - 5.90	-5.00 to UNCH	+148.25 K to +163.25 K	+3.25 to +8.25
Ord HRW	5.39 - 5.64	-10.00	+149.00 K to +174.00 K	UNCH
<a href="#">Toledo - GX_GR111</a>				
Corn	3.4800 - 3.5000	+0.75 to +2.75	-4.00 K to -2.00 K	UNCH to +2.00
Soybeans	8.0450 - 8.0950	-6.25	-43.00 K to -38.00 K	UNCH
SRW	4.1675 - 4.2175	-8.25	-10.00 K to -5.00 K	UNCH

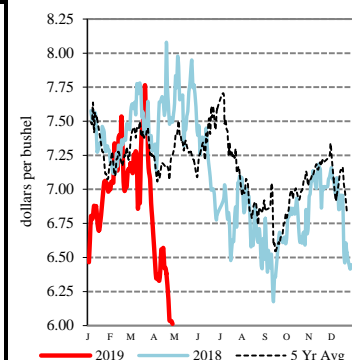
All prices are reported in dollars/bushel, except soybean and corn oil is in cents/lb. and soybean meal is in dollars/ton.

SWW - Portland, OR



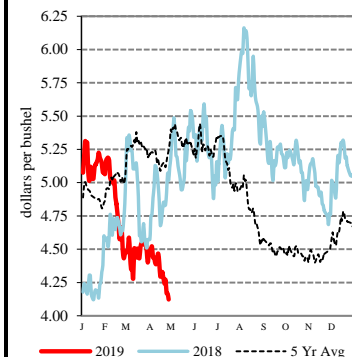
TERMINAL	PRICE (\$/bu)	CHANGE (¢/bu)	BASIS (¢)	CHANGE
<a href="#">Kansas City - SJ_GR112</a>				
Corn	3.48 - 3.70	+1.00	-4.00 K to +18.00 K	UNCH
Soybeans	8.03 - 8.18	-6.00	-45.00 K to -30.00 K	UNCH
Ord HRW	3.80 - 4.25	-10.00	-10.00 K to +35.00 K	UNCH
<a href="#">Minneapolis - MS_GR110</a>				
14 DNS/NS Del Chicag	5.9450 - 5.9950	-4.25	+87.00 N to +92.00 N	UNCH
Oats	2.9250 - 3.5750	-4.00 to -11.00	-5.00 N to +60.00 N	+7.00 to UNCH
<a href="#">Omaha - WH_GR110</a>				
Corn	3.55 - 3.61	+1.00	+3.00 K to +9.00 K	+0.25
Soybeans	7.88	-6.00	-59.50 K	+0.25
<a href="#">Portland - JO_GR111</a>				
11.5 HRW	5.60 - 5.85	-10.00	+170.00 K to +195.00 K	UNCH
14 DNS	5.96 - 6.06	-7.00	+105.00 K to +115.00 K	UNCH

14% DNS - Minneapolis, MN

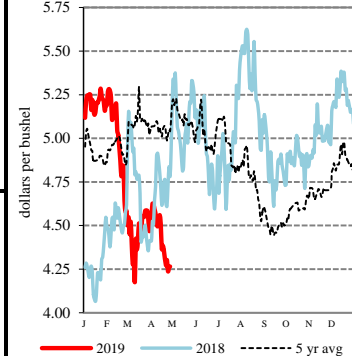


RIVER	PRICE (\$/bu)	CHANGE (¢/bu)	BASIS (¢)	CHANGE
<a href="#">So. Iowa, Mississippi River - MS_GR114</a>				
Corn	3.3575 - 3.3700	+0.50 to +0.75	-26.00 N to -15.00 K	UNCH
Soybeans	8.0750 - 8.1475	-6.25	-40.00 K to -46.00 N	UNCH
<a href="#">St. Louis, Mississippi River - JC_GR110</a>				
Corn	3.6900 - 3.7000	UNCH	+17.00 K to +18.00 K	-0.75
Soybeans	8.4500 - 8.4800	-4.00	-2.50 K to +0.50 K	+2.25
SRW	4.6300	-4.00 to -10.00	+36.25 K	+4.25 to -1.75
<a href="#">Memphis, Mississippi River - LR_GR110</a>				
Corn	3.6800 - 3.7200	+0.75	+16.00 K to +20.00 K	UNCH
Soybeans	8.3750 - 8.3950	-6.25	-10.00 K to -8.00 K	UNCH
SRW	NQ	NQ	NQ	NQ
<a href="#">Cincinnati, Ohio River - GX_GR114</a>				
Corn	3.5500 - 3.6000	-0.25 to +0.75	+3.00 K to +8.00 K	-1.00 to UNCH
Soybeans	8.3450 - 8.3850	-5.25 to -3.25	-13.00 K to -9.00 K	+1.00 to +3.00
SRW	NQ	NQ	NQ	NQ
<a href="#">Mt. Vernon, Indiana, Ohio River - GX_GR114</a>				
Corn	3.6100 - 3.6200	+0.75	+9.00 K to +10.00 K	UNCH
Soybeans	8.2950 - 8.3775	-6.25 to -6.00	-18.00 K to -23.00 N	UNCH to No Comp
SRW	NQ	NQ	NQ	NQ
<a href="#">No. Peoria, Illinois River - GX_GR112</a>				
Corn	3.4400 - 3.4800	+0.75	-8.00 K to -4.00 K	UNCH
Soybeans	8.1750 - 8.2350	-6.25 to -4.25	-30.00 K to -24.00 K	UNCH to +2.00

Ordinary HRW - Kansas City, KS



SRW - Chicago, IL



PROCESSOR	PRICE	CHANGE	BASIS	CHANGE
<b>Central IL</b>				
<a href="#">Corn</a>	3.4000 - 3.6000	+3.75 to +0.75	-12.00 K to +8.00 K	+3.00 to UNCH
<a href="#">Soybeans</a>	8.2250 - 8.3250	-6.25 to -3.25	-25.00 K to -15.00 K	UNCH to +3.00
Crude SB Oil	26.88 - 27.13	+0.36	-100.00 K to -75.00 K	UNCH
48 SB Meal	296.20 - 297.20	+1.30 to -2.70	-1.00 K to Opt K	+4.00 to UNCH
Crude Corn Oil - Rail	26.50	UNCH	N/A	N/A

FUTURES				PRICE	CHANGE			PRICE	CHANGE
CME Group	Corn	K	May 19	3.5200	+0.75	N	Jul 19	3.6175	+0.75
	Soybeans	K	May 19	8.4750	-6.25	N	Jul 19	8.6075	-6.25
	Wheat (SRW)	K	May 19	4.2675	-8.25	N	Jul 19	4.3525	-7.25
	Oats	K	May 19	3.1725	+8.50	N	Jul 19	2.9750	+2.75
MGEX	HRS Wheat (DNS)	K	May 19	4.9075	-7.25	N	Jul 19	5.0750	-4.25
KCBOT	HRW Wheat	K	May 19	3.8975	-10.00	N	Jul 19	3.9700	-10.00

USDA Livestock, Poultry & Grain Market News  
 210 Walnut Street, Room 767  
 Des Moines, Iowa 50309  
 Phone: 515-284-4460  
 Email: Desm.LPGMN@ams.usda.gov  
[www.ams.usda.gov/LPSMarketNewsPage](http://www.ams.usda.gov/LPSMarketNewsPage)