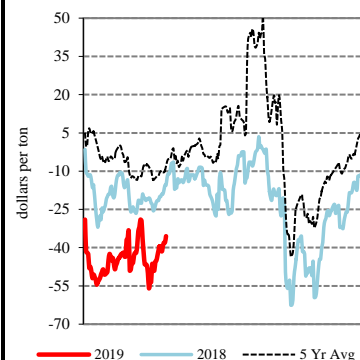


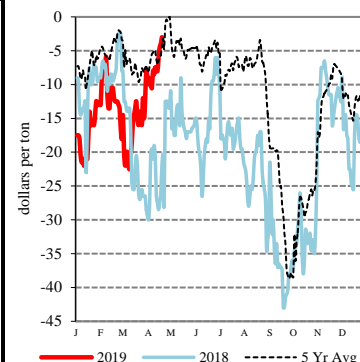
EXPORT	PRICE (\$/bu)	CHANGE (¢/bu)	BASIS (¢)	CHANGE
<a href="#">Atlantic - JO_GR850</a>				
Soybeans	8.6200	-15.00	Opt K	UNCH
SRW	NQ	NQ	NQ	NQ
<a href="#">Chicago - GX_GR110</a>				
Corn	3.1625 - 3.3625	-3.50 to -1.50	-35.00 K to -15.00 K	UNCH to +2.00
Soybeans	8.1700 - 8.2200	-15.00	-45.00 K to -40.00 K	UNCH
SRW	4.2175 - 4.3875	+3.00	-17.00 K to Opt K	UNCH
<a href="#">Gulf - JO_GR112</a>				
Corn	3.9725 - 4.1025	-3.50	+46.00 K to +59.00 K	UNCH
Soybeans	8.8900 - 8.9000	-16.00 to -17.00	+27.00 K to +28.00 K	-1.00 to -2.00
SRW	5.2275 - 5.2575	+3.00	+84.00 K to +87.00 K	UNCH
12 HRW	5.2650 - 5.4450	+2.75	+112.00 K to +130.00 K	UNCH
<a href="#">PNW - JO_GR110</a>				
SWW	5.80 - 5.90	UNCH	+141.25 K to +151.25 K	-3.00
Ord HRW	5.64 - 5.89	+3.00	+149.00 K to +174.00 K	UNCH
<a href="#">Toledo - GX_GR111</a>				
Corn	3.4525 - 3.4725	-3.50 to -1.50	-6.00 K to -4.00 K	UNCH to +2.00
Soybeans	8.1900 - 8.2400	-15.00	-43.00 K to -38.00 K	UNCH
SRW	4.2875 - 4.3375	+3.00	-10.00 K to -5.00 K	UNCH

All prices are reported in dollars/bushel, except soybean and corn oil is in cents/lb. and soybean meal is in dollars/ton.

IL River So. of Peoria Bean Basis



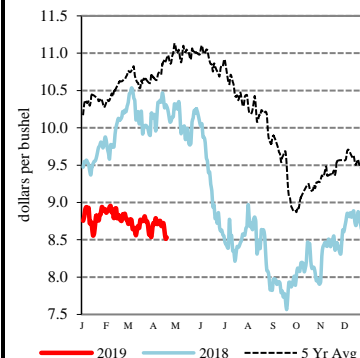
IL River So. of Peoria Corn Basis



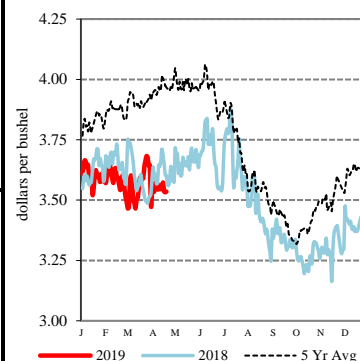
TERMINAL	PRICE (\$/bu)	CHANGE (¢/bu)	BASIS (¢)	CHANGE
<a href="#">Kansas City - SJ_GR112</a>				
Corn	3.47 - 3.65	-4.00	-4.00 K to +14.00 K	UNCH
Soybeans	8.07 - 8.32	-15.00	-55.00 K to -30.00 K	UNCH
Ord HRW	4.05 - 4.50	+3.00	-10.00 K to +35.00 K	UNCH
<a href="#">Minneapolis - MS_GR110</a>				
14 DNS/NS Del Chicag	5.9625 - 6.1125	-23.00 to -8.00	+85.00 K to +100.00 K	-25.00 to -10.00
Oats	3.0650 - 3.5450	+1.00	+12.00 K to +60.00 K	UNCH
<a href="#">Omaha - WH_GR110</a>				
Corn	3.49 - 3.60	-4.00 to UNCH	-2.25 K to +8.75 K	-0.50 to +3.50
Soybeans	8.02	-15.00	-60.00 K	UNCH
<a href="#">Portland - JO_GR111</a>				
11.5 HRW	5.85 - 6.10	+3.00	+170.00 K to +195.00 K	UNCH
14 DNS	6.16 - 6.26	+2.00	+105.00 K to +115.00 K	UNCH

RIVER	PRICE (\$/bu)	CHANGE (¢/bu)	BASIS (¢)	CHANGE
<a href="#">So. Iowa, Mississippi River - MS_GR114</a>				
Corn	3.3325 - 3.3525	-3.50	-18.00 K to -16.00 K	UNCH
Soybeans	8.0700 - 8.1900	-15.00	-55.00 K to -43.00 K	UNCH
<a href="#">St. Louis, Mississippi River - JC_GR110</a>				
Corn	3.6700 - 3.7000	-3.00 to -2.00	+15.75 K to +18.75 K	+0.50 to +1.50
Soybeans	8.4900 - 8.5300	-12.00 to -13.00	-13.00 K to -9.00 K	+3.00 to +2.00
SRW	4.7000 - 4.7600	+3.00	+31.25 K to +37.25 K	UNCH
<a href="#">Memphis, Mississippi River - LR_GR110</a>				
Corn	3.6525 - 3.6925	-3.50	+14.00 K to +18.00 K	UNCH
Soybeans	8.4800 - 8.5200	-15.00	-14.00 K to -10.00 K	UNCH
SRW	NQ	NQ	NQ	NQ
<a href="#">Cincinnati, Ohio River - GX_GR114</a>				
Corn	3.5625 - 3.6025	-1.50 to +0.50	+5.00 K to +9.00 K	+2.00 to +4.00
Soybeans	8.4100 - 8.4400	-9.00 to -11.00	-21.00 K to -18.00 K	+6.00 to +4.00
SRW	NQ	NQ	NQ	NQ
<a href="#">Mt. Vernon, Indiana, Ohio River - GX_GR114</a>				
Corn	3.5925 - 3.6125	-3.50	+8.00 K to +10.00 K	UNCH
Soybeans	8.4200 - 8.4800	-13.00 to -12.00	-20.00 K to -14.00 K	+2.00 to +3.00
SRW	NQ	NQ	NQ	NQ
<a href="#">No. Peoria, Illinois River - GX_GR112</a>				
Corn	3.4325 - 3.4825	-1.50 to -2.50	-8.00 K to -3.00 K	+2.00 to +1.00
Soybeans	8.2300 - 8.3300	-11.00 to -10.00	-39.00 K to -29.00 K	+4.00 to +5.00

Soybeans - Central IL



Corn - Central IL



PROCESSOR	PRICE	CHANGE	BASIS	CHANGE
<b>Central IL</b>				
<a href="#">Corn</a>	3.3625 - 3.5625	-3.50	-15.00 K to +5.00 K	UNCH
<a href="#">Soybeans</a>	8.2700 - 8.4200	-15.00	-35.00 K to -20.00 K	UNCH
Crude SB Oil	27.06 - 27.31	-0.89	-100.00 K to -75.00 K	-25.00
48 SB Meal	296.00 - 303.00	-1.50	-5.00 K to +2.00 K	UNCH
Crude Corn Oil - Rail	27.90	UNCH	N/A	N/A

FUTURES		PRICE	CHANGE	PRICE	CHANGE
CME Group	Corn	K May 19 3.5125	-3.50	N Jul 19 3.6025	-3.25
	Soybeans	K May 19 8.6200	-15.00	N Jul 19 8.7550	-15.25
	Wheat (SRW)	K May 19 4.3875	+3.00	N Jul 19 4.4500	+3.25
	Oats	K May 19 2.9450	+1.50	N Jul 19 2.8275	+2.25
MGEX	HRS Wheat (DNS)	K May 19 5.1125	+2.00	N Jul 19 5.1950	+1.50
KCBOT	HRW Wheat	K May 19 4.1450	+2.75	N Jul 19 4.2100	+2.75

USDA Livestock, Poultry & Grain Market News  
 210 Walnut Street, Room 767  
 Des Moines, Iowa 50309  
 Phone: 515-284-4460  
 Email: [Desm.LPGMN@ams.usda.gov](mailto:Desm.LPGMN@ams.usda.gov)  
[www.ams.usda.gov/LPSMarketNewsPage](http://www.ams.usda.gov/LPSMarketNewsPage)