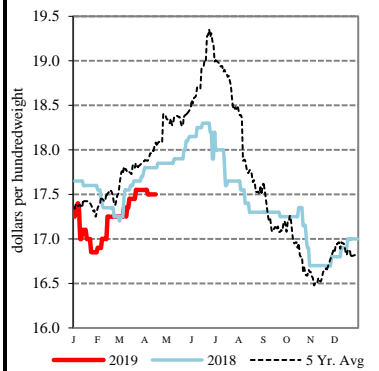


EXPORT	PRICE (\$/bu)	CHANGE (¢/bu)	BASIS (¢)		CHANGE
Atlantic - JO_GR850					
Soybeans	8.8050	+1.50		Opt K	UNCH
SRW	NQ	NQ		NQ	NQ
Chicago - GX_GR110					
Corn	3.2350 - 3.4150	+0.25	-35.00 K to	-17.00 K	UNCH
Soybeans	8.3550 - 8.4050	+1.50	-45.00 K to	-40.00 K	UNCH
SRW	4.2725 - 4.4425	-2.75	-17.00 K to	Opt K	UNCH
Gulf - JO_GR112					
Corn	4.0450 - 4.1750	+0.25	+46.00 K to	+59.00 K	UNCH
Soybeans	9.0850 - 9.0950	+2.50	+28.00 K to	+29.00 K	+1.00
SRW	5.2825 - 5.3125	-1.75 to -2.75	+84.00 K to	+87.00 K	+1.00 to UNCH
12 HRW	5.3200 - 5.5000	-0.50	+112.00 K to	+130.00 K	UNCH
PNW - JO_GR110					
SWW	5.85 - 5.90	-5.00 to UNCH	+140.75 K to	+145.75 K	-2.25 to +2.75
Ord HRW	5.69 - 5.94	-1.00	+149.00 K to	+174.00 K	UNCH
Toledo - GX_GR111					
Corn	3.5250	+0.25		-6.00 K	UNCH
Soybeans	8.3750 - 8.4250	+1.50	-43.00 K to	-38.00 K	UNCH
SRW	4.3425 - 4.3925	-2.75	-10.00 K to	-5.00 K	UNCH

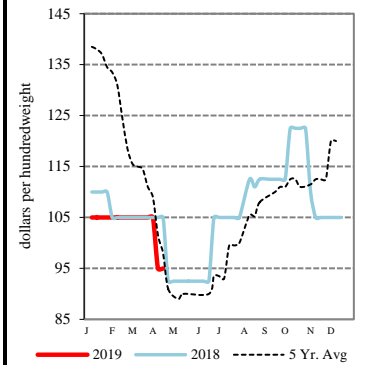
All prices are reported in dollars/bushel, except soybean and corn oil is in cents/lb. and soybean meal is in dollars/ton.

Sunflower Seeds - Fargo, ND



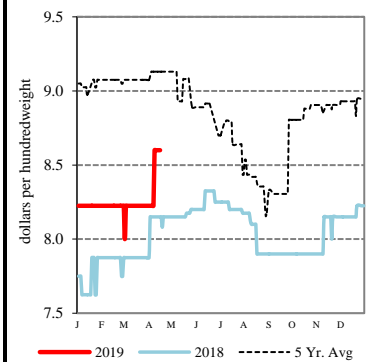
TERMINAL	PRICE (\$/bu)	CHANGE (¢/bu)	BASIS (¢)		CHANGE
Kansas City - SJ_GR112					
Corn	3.54 - 3.73	+1.00	-5.00 K to	+14.00 K	UNCH
Soybeans	8.26 - 8.51	+2.00	-55.00 K to	-30.00 K	UNCH
Ord HRW	4.10 - 4.55	-1.00	-10.00 K to	+35.00 K	UNCH
Minneapolis - MS_GR110					
14 DNS/NS Del Chicago	6.3825	-4.25		+115.00 K	UNCH
Oats	2.9200 - 3.5200	-8.00	Opt K to	+60.00 K	UNCH
Omaha - WH_GR110					
Corn	3.55 - 3.61	+1.00 to +3.00	-3.50 K to	+2.50 K	+0.75 to +2.75
Soybeans	8.21	+2.00		-59.50 K	+0.50
Portland - JO_GR111					
11.5 HRW	5.90 - 6.15	-1.00	+170.00 K to	+195.00 K	UNCH
14 DNS	6.28 - 6.38	-5.00	+105.00 K to	+115.00 K	UNCH

Rice Bran - Arkansas



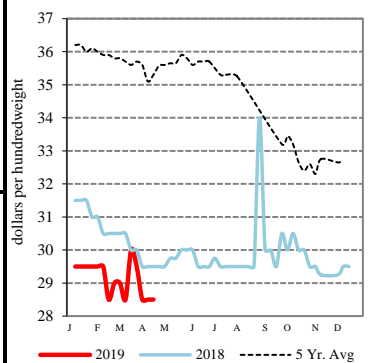
RIVER	PRICE (\$/bu)	CHANGE (¢/bu)	BASIS (¢)		CHANGE
So. Iowa, Mississippi River - MS_GR114					
Corn	3.3850 - 3.4250	+0.25 to +1.25	-20.00 K to	-16.00 K	UNCH to +1.00
Soybeans	8.2050 - 8.3450	+1.50 to +0.50	-60.00 K to	-46.00 K	UNCH to -1.00
St. Louis, Mississippi River - JC_GR110					
Corn	3.7500 - 3.7600	+3.00	+16.50 K to	+17.50 K	+2.75
Soybeans	8.6400 - 8.6900	+1.00 to +3.00	-16.50 K to	-11.50 K	-0.50 to +1.50
SRW	4.7600 - 4.8100	-3.00	+31.75 K to	+36.75 K	-0.25
Memphis, Mississippi River - LR_GR110					
Corn	NQ	NQ		NQ	NQ
Soybeans	NQ	NQ		NQ	NQ
SRW	NQ	NQ		NQ	NQ
Cincinnati, Ohio River - GX_GR114					
Corn	3.5950 - 3.6250	+2.25	+1.00 K to	+4.00 K	+2.00
Soybeans	8.5250 - 8.5550	+2.50 to +3.50	-28.00 K to	-25.00 K	+1.00 to +2.00
SRW	NQ	NQ		NQ	NQ
Mt. Vernon, Indiana, Ohio River - GX_GR114					
Corn	3.6350 - 3.6850	+0.25 to +2.25	+5.00 K to	+10.00 K	UNCH to +2.00
Soybeans	8.5650 - 8.6350	+5.50 to +1.50	-24.00 K to	-17.00 K	+4.00 to UNCH
SRW	NQ	NQ		NQ	NQ
No. Peoria, Illinois River - GX_GR112					
Corn	3.4850 - 3.5350	+0.25	-10.00 K to	-5.00 K	UNCH
Soybeans	8.3750 - 8.4450	+1.50 to +3.50	-43.00 K to	-36.00 K	UNCH to +2.00

Malting Barley - Great Falls, MT



PROCESSOR	PRICE	CHANGE	BASIS		CHANGE
Central IL					
Corn	3.4350 - 3.6350	+0.25	-15.00 K to	+5.00 K	UNCH
Soybeans	8.4550 - 8.6050	+1.50	-35.00 K to	-20.00 K	UNCH
Crude SB Oil	28.05 - 28.30	+0.34	-75.00 K to	-50.00 K	UNCH
48 SB Meal	298.20 - 305.20	-0.70	-5.00 K to	+2.00 K	UNCH
Crude Corn Oil - Rail	27.90	-1.28	N/A		N/A

Pinto Beans - Northeast CO



FUTURES				PRICE	CHANGE			PRICE	CHANGE
CME Group	Corn	K	May 19	3.5850	+0.25	N	Jul 19	3.6725	+0.25
	Soybeans	K	May 19	8.8050	+1.50	N	Jul 19	8.9425	+1.50
	Wheat (SRW)	K	May 19	4.4425	-2.75	N	Jul 19	4.4825	-2.75
	Oats	K	May 19	2.9200	-7.75	N	Jul 19	2.7825	-1.25
MGEX	HRS Wheat (DNS)	K	May 19	5.2325	-4.25	N	Jul 19	5.2950	-1.25
KCBOT	HRW Wheat	K	May 19	4.2000	-0.50	N	Jul 19	4.2575	-0.50

USDA Livestock, Poultry & Grain Market News
 210 Walnut Street, Room 767
 Des Moines, Iowa 50309
 Phone: 515-284-4460
 Email: Desm.LPGMN@ams.usda.gov
www.ams.usda.gov/LPSMarketNewsPage