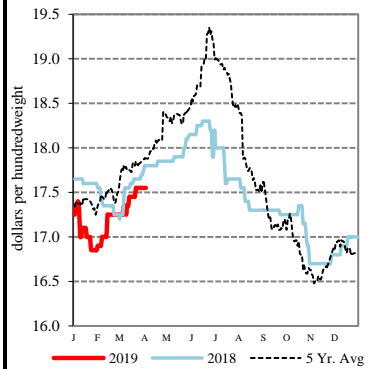


EXPORT	PRICE (\$/bu)	CHANGE (¢/bu)	BASIS (¢)		CHANGE
Atlantic - JO_GR850					
Soybeans	9.0650	+7.75		Opt K	UNCH
SRW	NQ	NQ		NQ	NQ
Chicago - GX_GR110					
Corn	3.3025 - 3.4825	+2.50	-35.00 K to	-17.00 K	UNCH
Soybeans	8.6150 - 8.6650	+7.75	-45.00 K to	-40.00 K	UNCH
SRW	4.5375 - 4.7075	-0.25	-17.00 K to	Opt K	UNCH
Gulf - JO_GR112					
Corn	4.1125 - 4.2425	+2.50	+46.00 K to	+59.00 K	UNCH
Soybeans	9.2950 - 9.3450	+8.75 to +7.75	+23.00 K to	+28.00 K	+1.00 to UNCH
SRW	5.5575 - 5.5775	-0.25 to -1.25	+85.00 K to	+87.00 K	UNCH to -1.00
12 HRW	5.5150 - 5.6950	+2.75	+112.00 K to	+130.00 K	UNCH
PNW - JO_GR110					
SWW	5.90 - 6.05	UNCH to +5.00	+119.25 K to	+134.25 K	+0.25 to +5.25
Ord HRW	5.89 - 6.19	+3.00	+149.00 K to	+179.00 K	UNCH
Toledo - GX_GR111					
Corn	3.5825 - 3.5925	+2.50 to +3.50	-7.00 K to	-6.00 K	UNCH to +1.00
Soybeans	8.5650 - 8.6850	+7.75	-50.00 K to	-38.00 K	UNCH
SRW	4.6075 - 4.6575	-0.25	-10.00 K to	-5.00 K	UNCH

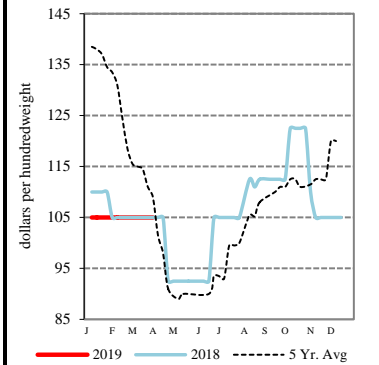
All prices are reported in dollars/bushel, except soybean and corn oil is in cents/lb. and soybean meal is in dollars/ton.

Sunflower Seeds - Fargo, ND



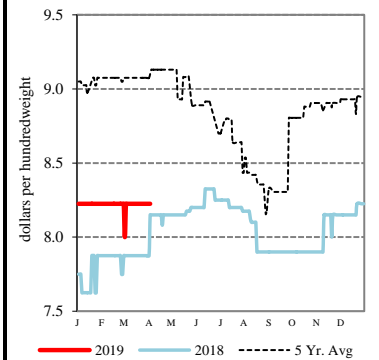
TERMINAL	PRICE (\$/bu)	CHANGE (¢/bu)	BASIS (¢)		CHANGE
Kansas City - SJ_GR112					
Corn	3.60 - 3.73	+2.00	-5.00 K to	+8.00 K	UNCH
Soybeans	8.57 - 8.82	+8.00	-50.00 K to	-25.00 K	UNCH
Ord HRW	4.30 - 4.75	+3.00	-10.00 K to	+35.00 K	UNCH
Minneapolis - MS_GR110					
14 DNS/NS Del Chicago	6.3225	-7.50 to -17.50		+105.00 K	UNCH to -10.00
Oats	2.9750 - 3.5350	-10.00 to +3.00	+9.00 K to	+65.00 K	-13.00 to UNCH
Omaha - WH_GR110					
Corn	3.57	+2.00		-8.25 K	-0.50
Soybeans	8.42 - 8.45	+8.00	-64.50 K to	-61.50 K	+0.25
Portland - JO_GR111					
11.5 HRW	6.10 - 6.40	+3.00	+170.00 K to	+200.00 K	UNCH
14 DNS	6.32 - 6.47	-8.00	+105.00 K to	+120.00 K	UNCH

Rice Bran - Arkansas



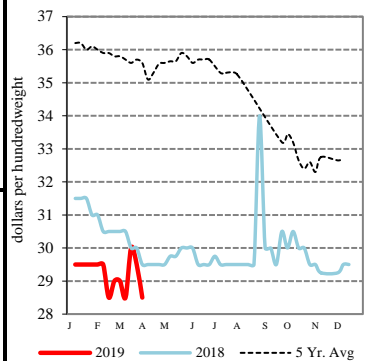
RIVER	PRICE (\$/bu)	CHANGE (¢/bu)	BASIS (¢)		CHANGE
So. Iowa, Mississippi River - MS_GR114					
Corn	3.3625 - 3.4325	+1.50 to +2.50	-29.00 K to	-22.00 K	-1.00 to UNCH
Soybeans	8.4150 - 8.4750	+8.75 to +7.75	-65.00 K to	-59.00 K	+1.00 to UNCH
St. Louis, Mississippi River - JC_GR110					
Corn	3.7300	UNCH		+7.75 K	-2.50
Soybeans	8.7900 - 8.8200	+9.00 to +7.00	-27.50 K to	-24.50 K	+1.25 to -0.75
SRW	5.0200 - 5.0300	-1.00 to UNCH	+31.25 K to	+32.25 K	-0.75 to +0.25
Memphis, Mississippi River - LR_GR110					
Corn	3.8025	+2.50		+15.00 K	UNCH
Soybeans	8.8650 - 8.8850	+7.75	-20.00 K to	-18.00 K	UNCH
SRW	NQ	NQ		NQ	NQ
Cincinnati, Ohio River - GX_GR114					
Corn	3.5425 - 3.5925	+2.50 to +3.50	-11.00 K to	-6.00 K	UNCH to +1.00
Soybeans	8.6150 - 8.6450	+7.75 to +8.75	-45.00 K to	-42.00 K	UNCH to +1.00
SRW	NQ	NQ		NQ	NQ
Mt. Vernon, Indiana, Ohio River - GX_GR114					
Corn	3.6025 - 3.6525	+2.50	-5.00 K to	Opt K	UNCH
Soybeans	8.7150 - 8.8450	+12.75 to +5.75	-35.00 K to	-22.00 K	+5.00 to -2.00
SRW	NQ	NQ		NQ	NQ
No. Peoria, Illinois River - GX_GR112					
Corn	3.4825 - 3.5825	+1.50 to +7.50	-17.00 K to	-7.00 K	-1.00 to +5.00
Soybeans	8.5550 - 8.5850	+9.75	-51.00 K to	-48.00 K	+2.00

Malting Barley - Great Falls, MT



PROCESSOR	PRICE	CHANGE	BASIS		CHANGE
Central IL					
Corn	3.5025 - 3.6425	+2.50	-15.00 K to	-1.00 K	UNCH
Soybeans	8.7150 - 8.8650	+7.75	-35.00 K to	-20.00 K	UNCH
Crude SB Oil	28.45 - 28.70	+0.40	-75.00 K to	-50.00 K	UNCH
48 SB Meal	306.90 - 313.90	+0.90	-5.00 K to	+2.00 K	UNCH
Crude Corn Oil - Rail	28.50	UNCH	N/A		N/A

Pinto Beans - Northeast CO



FUTURES		PRICE	CHANGE		PRICE	CHANGE
CME Group	Corn	K May 19	3.6525	+2.50	N Jul 19	3.7425 +2.25
	Soybeans	K May 19	9.0650	+7.75	N Jul 19	9.1950 +7.25
	Wheat (SRW)	K May 19	4.7075	-0.25	N Jul 19	4.7375 -0.75
	Oats	K May 19	2.8850	+3.25	N Jul 19	2.7875 +1.50
MGEX	HRS Wheat (DNS)	K May 19	5.2725	-7.50	N Jul 19	5.3650 -5.75
KCBOT	HRW Wheat	K May 19	4.3950	+2.75	N Jul 19	4.4525 +1.75

USDA Livestock, Poultry & Grain Market News
 210 Walnut Street, Room 767
 Des Moines, Iowa 50309
 Phone: 515-284-4460
 Email: Desm.LPGMN@ams.usda.gov
www.ams.usda.gov/LPSMarketNewsPage