



# National Weekly Fed Cattle Comprehensive

Agricultural Marketing Service

Livestock, Poultry, and Grain Market News

May 02, 2023

## Weighted Average Prices

(Weekly Information from 2pm Previous Monday to 10am Current Monday; Includes Negotiated, Formula Nets, Contract Nets, & Grid Nets)"

### All Steers & Heifers (Beef Type Cattle)

Purchasing Basis	% Choice	Head	Avg Price	Week Ago Change	Year Ago Change
Dressed	> 65% Choice	253,856	\$285.48	\$4.13 ↑	\$56.45 ↑
	< 65% Choice	26,356	\$276.29	\$1.67 ↑	\$56.28 ↑
	Total all Grades	280,212	\$284.62	\$3.94 ↑	\$56.85 ↑
Live	> 65% Choice	100,703	\$177.61	(\$0.29) ↓	\$33.92 ↑
	< 65% Choice	5,626	\$175.11	\$2.01 ↑	\$34.47 ↑
	Total all Grades	106,329	\$177.48	\$0.00 ↓	\$33.96 ↑

### Dairy Bred

Purchasing Basis	% Choice	Head	Avg Price	Week Ago Change	Year Ago Change
Dressed	> 65% Choice	24,762	\$256.93	(\$2.64) ↓	\$43.07 ↑
	< 65% Choice	2,966	\$238.69	(\$1.81) ↓	\$36.21 ↑
	Total all Grades	27,728	\$254.98	(\$2.44) ↓	\$41.77 ↑
Live	> 65% Choice	906	\$165.73	(\$4.42) ↓	\$31.93 ↑
	< 65% Choice			\$0.00 ↓	(\$136.79) ↓
	Total all Grades	906	\$165.73	(\$4.42) ↓	\$31.40 ↑

## Spread Comparison Values

### Beef Type minus Dairy Type

(Weekly Information from 2pm Previous Monday to 10am Current Monday; Includes Negotiated, Formula Nets, Contract Nets, & Grid Nets)

Purchasing Basis	Current	Week Ago Change	Year Ago Change
Dressed	\$29.64 ↑	\$23.26 ↑	\$14.56 ↑
Live	\$11.75 ↑	\$7.33 ↑	\$9.19 ↑

### Formula Net minus Negotiated

(Beef Type Cattle; All live transactions converted to a dressed price)

### 52 Week Rolling Average

\$1.41





# National Weekly Fed Cattle Comprehensive

Agricultural Marketing Service  
Livestock, Poultry, and Grain Market News

May 02, 2023

## Formula Base minus Negotiated

(Beef Type Cattle; All live transactions converted to a dressed price)

52 Week Rolling Average

(\$2.59)



## Formula Net minus Formula Base

(Beef Type Cattle; All live transactions converted to a dressed price)

52 Week Rolling Average

\$4.00



## Grading % and Carcass Weights

(Beef Type Cattle; Includes Formula Net, Contract Net, and Grid Net; Grading % includes Choice & higher; Carcass Weight includes all grades; All live transactions converted to a dressed basis)

Grading %

83.4

Week Ago

83.0



Dressed Weight

860.8

Week Ago

857.1



## Daily Formula Base Voume

Tue Apr 25

26,559

Wed Apr 26

28,811

Thu Apr 27

39,442

Fri Apr 28

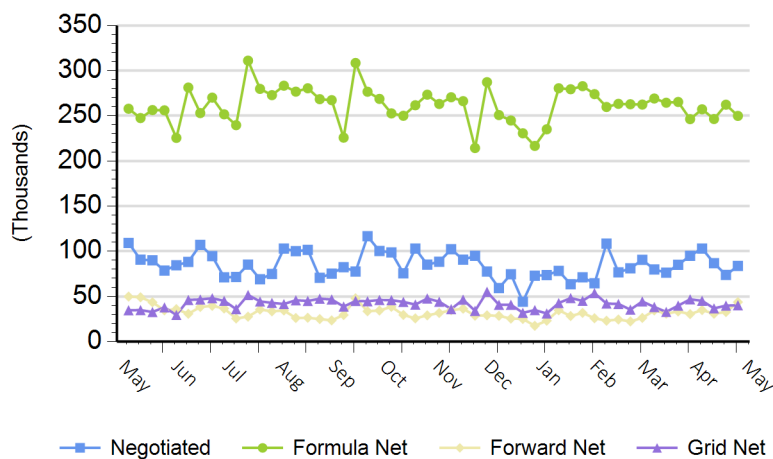
25,853

Mon May 01

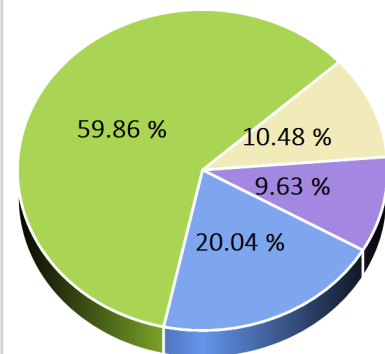
136,655

## Purchasing Basis Volume

### Weekly Purchasing Basis



### Previous Week





# National Weekly Fed Cattle Comprehensive

Agricultural Marketing Service  
Livestock, Poultry, and Grain Market News

May 02, 2023

## Weekly Negotiated Avg. Price by Delivery Period

(Beef Type Cattle: All live transactions converted to dressed price)

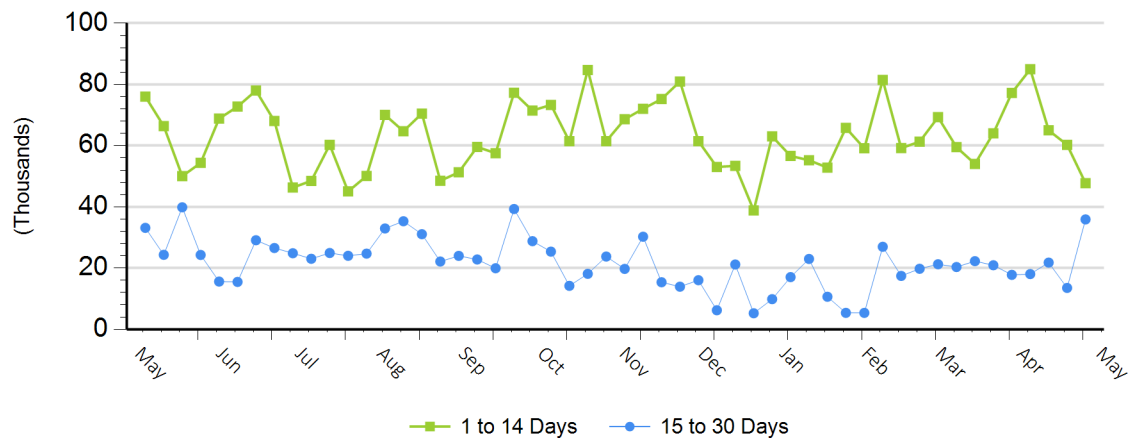
Avg Price (1 to 14 Days)

\$280.21

Avg Price (15 to 30 Days)

\$282.81

## Weekly Negotiated Head Count by Delivery Period



For more Information about this report, please visit this link: [National Weekly Fed Cattle Comprehensive Overview](#)