



National Weekly Fed Cattle Comprehensive

Agricultural Marketing Service

Livestock, Poultry, and Grain Market News

March 28, 2023

Weighted Average Prices

(Weekly Information from 2pm Previous Monday to 10am Current Monday; Includes Negotiated, Formula Nets, Contract Nets, & Grid Nets)"

All Steers & Heifers (Beef Type Cattle)

Purchasing Basis	% Choice	Head	Avg Price	Week Ago Change	Year Ago Change
Dressed	> 65% Choice	264,280	\$266.82	(\$0.15) ↓	\$43.39 ↑
	< 65% Choice	21,937	\$258.86	(\$1.12) ↓	\$40.51 ↑
	Total all Grades	286,217	\$266.21	(\$0.08) ↓	\$43.14 ↑
Live	> 65% Choice	109,118	\$165.78	\$0.04 ↑	\$25.67 ↑
	< 65% Choice	4,415	\$164.23	(\$1.00) ↓	\$24.89 ↑
	Total all Grades	113,533	\$165.72	\$0.01 ↑	\$25.65 ↑

Dairy Bred

Purchasing Basis	% Choice	Head	Avg Price	Week Ago Change	Year Ago Change
Dressed	> 65% Choice	18,559	\$250.25	\$0.60 ↑	\$38.43 ↑
	< 65% Choice	2,015	\$234.74	(\$2.86) ↓	\$32.39 ↑
	Total all Grades	20,574	\$248.73	\$0.34 ↑	\$37.69 ↑
Live	> 65% Choice	723	\$154.53	\$0.12 ↑	\$25.80 ↑
	< 65% Choice			(\$149.40) ↓	(\$131.30) ↓
	Total all Grades	723	\$154.53	\$0.73 ↑	\$25.56 ↑

Spread Comparison Values

Beef Type minus Dairy Type

(Weekly Information from 2pm Previous Monday to 10am Current Monday; Includes Negotiated, Formula Nets, Contract Nets, & Grid Nets)

Purchasing Basis	Current	Week Ago Change	Year Ago Change
Dressed	\$17.48 ↑	\$17.90 ↑	\$12.03 ↑
Live	\$11.19 ↑	\$11.91 ↑	\$11.10 ↑

Formula Net minus Negotiated

(Beef Type Cattle; All live transactions converted to a dressed price)

52 Week Rolling Average

\$2.37





National Weekly Fed Cattle Comprehensive

Agricultural Marketing Service
Livestock, Poultry, and Grain Market News

March 28, 2023

Formula Base minus Negotiated

(Beef Type Cattle; All live transactions converted to a dressed price)

52 Week Rolling Average

(\$1.62)



Formula Net minus Formula Base

(Beef Type Cattle; All live transactions converted to a dressed price)

52 Week Rolling Average

\$3.99



Grading % and Carcass Weights

(Beef Type Cattle; Includes Formula Net, Contract Net, and Grid Net; Grading % includes Choice & higher; Carcass Weight includes all grades; All live transactions converted to a dressed basis)

Grading %

85.2

Week Ago

84.3



Dressed Weight

862.0

Week Ago

863.7



Daily Formula Base Volume

Tue Mar 21

30,384

Wed Mar 22

32,086

Thu Mar 23

41,620

Fri Mar 24

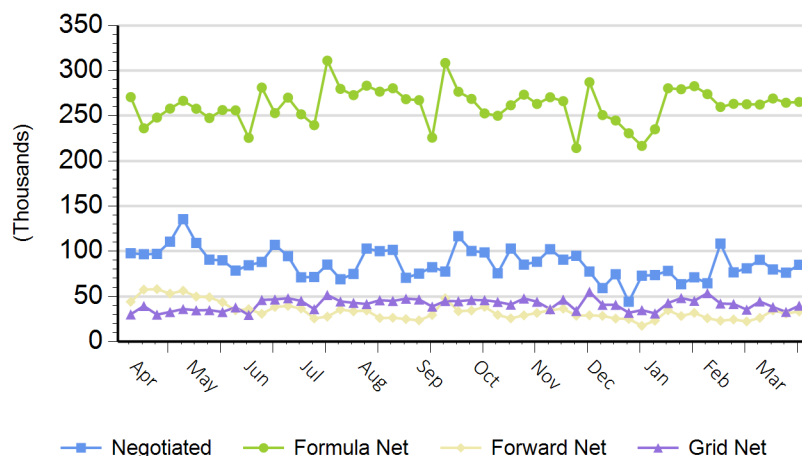
24,599

Mon Mar 27

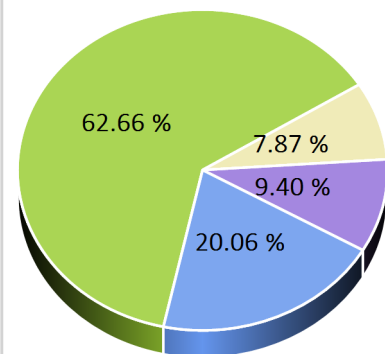
131,912

Purchasing Basis Volume

Weekly Purchasing Basis



Previous Week





National Weekly Fed Cattle Comprehensive

Agricultural Marketing Service
Livestock, Poultry, and Grain Market News

March 28, 2023

Weekly Negotiated Avg. Price by Delivery Period

(Beef Type Cattle: All live transactions converted to dressed price)

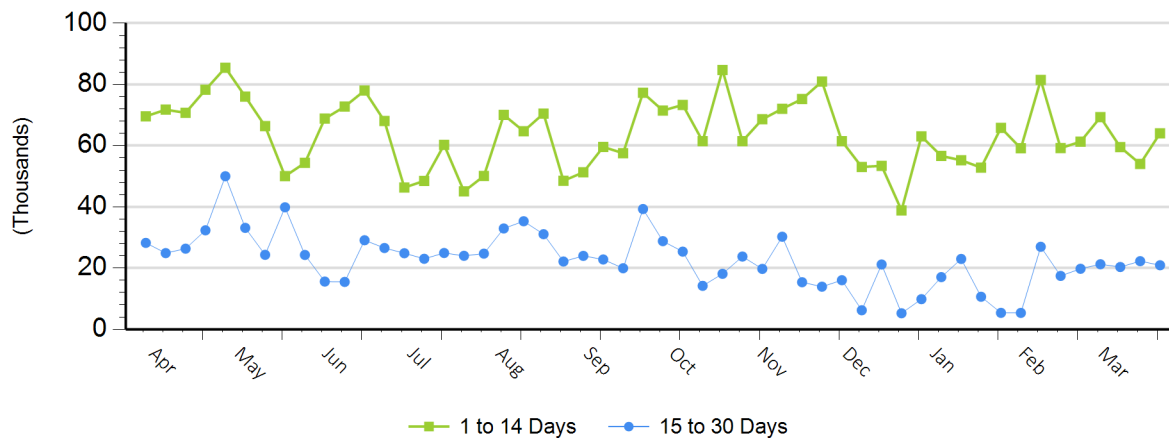
Avg Price (1 to 14 Days)

\$261.71

Avg Price (15 to 30 Days)

\$263.73

Weekly Negotiated Head Count by Delivery Period



For more Information about this report, please visit this link: [National Weekly Fed Cattle Comprehensive Overview](#)