



National Weekly Fed Cattle Comprehensive

Agricultural Marketing Service

Livestock, Poultry, and Grain Market News

March 14, 2023

Weighted Average Prices

(Weekly Information from 2pm Previous Monday to 10am Current Monday; Includes Negotiated, Formula Nets, Contract Nets, & Grid Nets)"

All Steers & Heifers (Beef Type Cattle)

Purchasing Basis	% Choice	Head	Avg Price	Week Ago Change	Year Ago Change
Dressed	> 65% Choice	276,819	\$266.03	\$3.21 ↑	\$39.57 ↑
	< 65% Choice	20,788	\$259.65	\$3.12 ↑	\$36.83 ↑
	Total all Grades	297,607	\$265.59	\$3.31 ↑	\$39.46 ↑
Live	> 65% Choice	96,436	\$166.29	\$0.71 ↑	\$24.85 ↑
	< 65% Choice	3,742	\$165.33	\$1.21 ↑	\$25.26 ↑
	Total all Grades	100,178	\$166.25	\$0.74 ↑	\$24.94 ↑

Dairy Bred

Purchasing Basis	% Choice	Head	Avg Price	Week Ago Change	Year Ago Change
Dressed	> 65% Choice	18,818	\$248.77	\$2.62 ↑	\$35.33 ↑
	< 65% Choice	3,203	\$237.06	\$3.38 ↑	\$35.78 ↑
	Total all Grades	22,021	\$247.06	\$2.26 ↑	\$34.20 ↑
Live	> 65% Choice	576	\$154.26	\$2.28 ↑	\$23.97 ↑
	< 65% Choice			\$0.00 ↓	(\$134.36) ↓
	Total all Grades	576	\$154.26	\$2.28 ↑	\$23.07 ↑

Spread Comparison Values

Beef Type minus Dairy Type

(Weekly Information from 2pm Previous Monday to 10am Current Monday; Includes Negotiated, Formula Nets, Contract Nets, & Grid Nets)

Purchasing Basis	Current	Week Ago Change	Year Ago Change
Dressed	\$18.53 ↑	\$17.48 ↑	\$13.27 ↑
Live	\$11.99 ↑	\$13.53 ↑	\$10.12 ↑

Formula Net minus Negotiated

(Beef Type Cattle; All live transactions converted to a dressed price)

52 Week Rolling Average

\$2.23





National Weekly Fed Cattle Comprehensive

Agricultural Marketing Service
Livestock, Poultry, and Grain Market News

March 14, 2023

Formula Base minus Negotiated

(Beef Type Cattle; All live transactions converted to a dressed price)

52 Week Rolling Average

(\$1.75)



Formula Net minus Formula Base

(Beef Type Cattle; All live transactions converted to a dressed price)

52 Week Rolling Average

\$3.98



Grading % and Carcass Weights

(Beef Type Cattle; Includes Formula Net, Contract Net, and Grid Net; Grading % includes Choice & higher; Carcass Weight includes all grades; All live transactions converted to a dressed basis)

Grading %

85.1

Week Ago

84.9



Dressed Weight

865.5

Week Ago

870.3



Daily Formula Base Voume

Tue Mar 07

30,637

Wed Mar 08

31,724

Thu Mar 09

36,297

Fri Mar 10

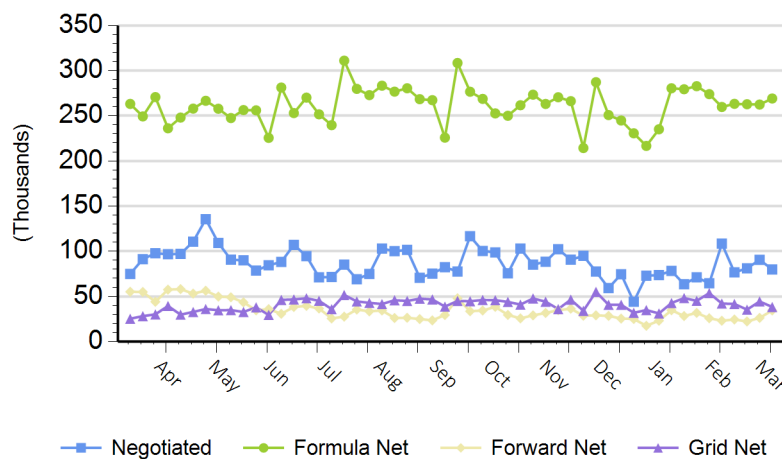
31,009

Mon Mar 13

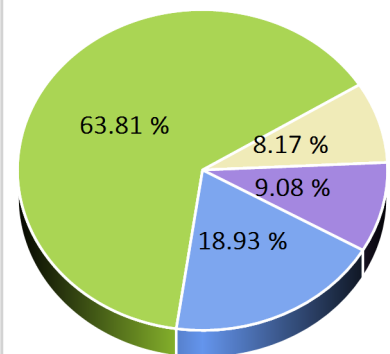
102,604

Purchasing Basis Volume

Weekly Purchasing Basis



Previous Week





National Weekly Fed Cattle Comprehensive

Agricultural Marketing Service

Livestock, Poultry, and Grain Market News

March 14, 2023

Weekly Negotiated Avg. Price by Delivery Period

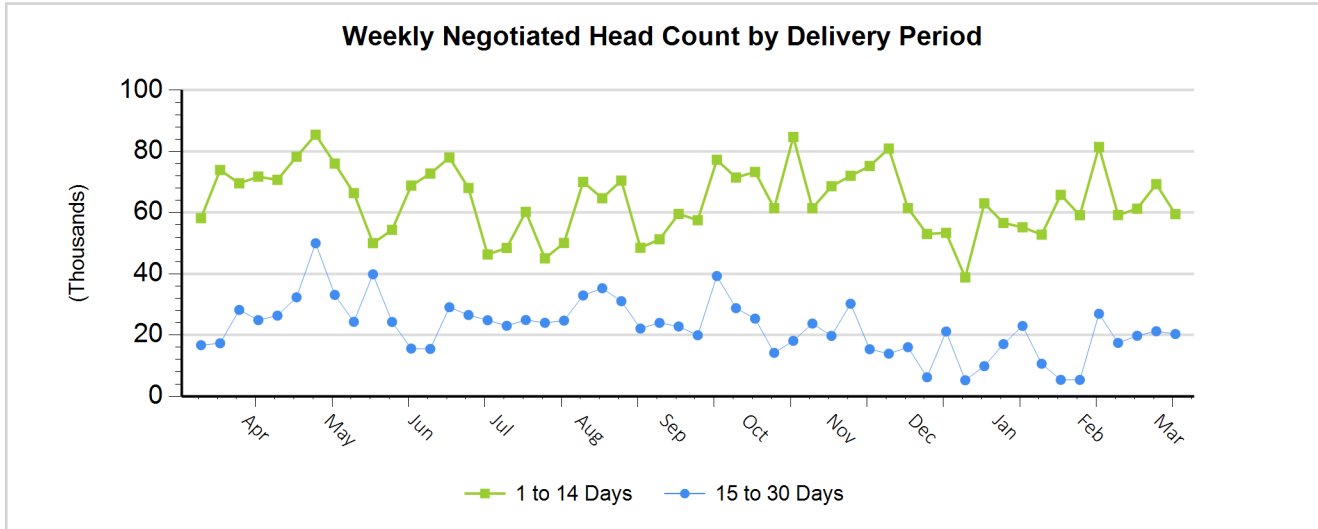
(Beef Type Cattle: All live transactions converted to dressed price)

Avg Price (1 to 14 Days)

\$263.04

Avg Price (15 to 30 Days)

\$265.04



For more Information about this report, please visit this link: [National Weekly Fed Cattle Comprehensive Overview](#)