



National Weekly Fed Cattle Comprehensive

Agricultural Marketing Service

Livestock, Poultry, and Grain Market News

January 17, 2023

Weighted Average Prices

(Weekly Information from 2pm Previous Monday to 10am Current Monday; Includes Negotiated, Formula Nets, Contract Nets, & Grid Nets)"

All Steers & Heifers (Beef Type Cattle)

Purchasing Basis	% Choice	Head	Avg Price	Week Ago Change	Year Ago Change
Dressed	> 65% Choice	286,255	\$255.77	\$1.44 ↑	\$33.75 ↑
	< 65% Choice	23,412	\$246.20	\$1.04 ↑	\$29.27 ↑
	Total all Grades	309,667	\$255.05	\$1.34 ↑	\$33.44 ↑
Live	> 65% Choice	93,880	\$158.83	(\$0.14) ↓	\$19.51 ↑
	< 65% Choice	4,088	\$157.66	\$0.36 ↑	\$19.64 ↑
	Total all Grades	97,968	\$158.78	(\$0.14) ↓	\$19.55 ↑

Dairy Bred

Purchasing Basis	% Choice	Head	Avg Price	Week Ago Change	Year Ago Change
Dressed	> 65% Choice	22,618	\$242.21	\$3.03 ↑	\$36.02 ↑
	< 65% Choice	1,628	\$222.50	\$1.52 ↑	\$28.23 ↑
	Total all Grades	24,246	\$240.88	\$3.82 ↑	\$35.51 ↑
Live	> 65% Choice	1,154	\$148.94	\$2.27 ↑	\$18.68 ↑
	< 65% Choice	69	\$151.29	\$151.29 ↑	\$19.38 ↑
	Total all Grades	1,223	\$149.07	\$2.40 ↑	\$18.63 ↑

Spread Comparison Values

Beef Type minus Dairy Type

(Weekly Information from 2pm Previous Monday to 10am Current Monday; Includes Negotiated, Formula Nets, Contract Nets, & Grid Nets)

Purchasing Basis	Current	Week Ago Change	Year Ago Change
Dressed	\$14.17 ↑	\$16.65 ↑	\$16.24 ↑
Live	\$9.71 ↑	\$12.25 ↑	\$8.79 ↑

Formula Net minus Negotiated

(Beef Type Cattle; All live transactions converted to a dressed price)

52 Week Rolling Average

\$1.77





National Weekly Fed Cattle Comprehensive

Agricultural Marketing Service
Livestock, Poultry, and Grain Market News

January 17, 2023

Formula Base minus Negotiated

(Beef Type Cattle; All live transactions converted to a dressed price)

52 Week Rolling Average

(\$1.98)



Formula Net minus Formula Base

(Beef Type Cattle; All live transactions converted to a dressed price)

52 Week Rolling Average

\$3.75



Grading % and Carcass Weights

(Beef Type Cattle; Includes Formula Net, Contract Net, and Grid Net; Grading % includes Choice & higher; Carcass Weight includes all grades; All live transactions converted to a dressed basis)

Grading %

84.1

Week Ago

84.1



Dressed Weight

884.0

Week Ago

882.7



Daily Formula Base Volume

Tue Jan 10

32,510

Wed Jan 11

30,030

Thu Jan 12

37,769

Fri Jan 13

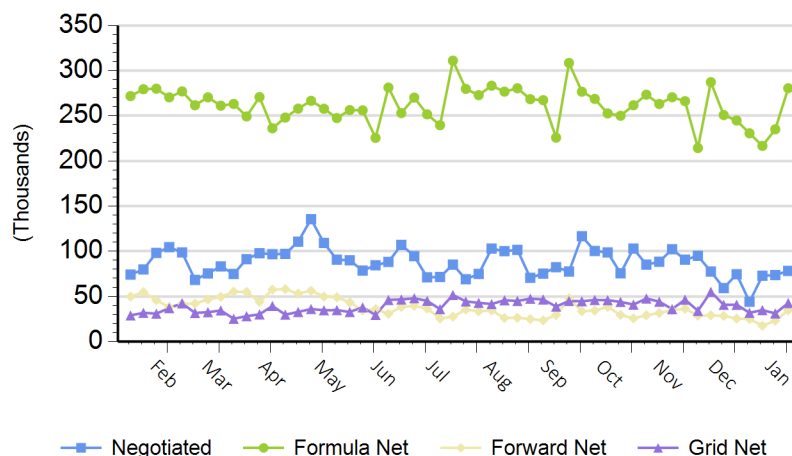
25,445

Mon Jan 16

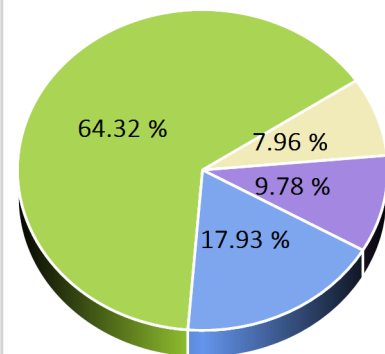
117,841

Purchasing Basis Volume

Weekly Purchasing Basis



Previous Week





National Weekly Fed Cattle Comprehensive

Agricultural Marketing Service
Livestock, Poultry, and Grain Market News

January 17, 2023

Weekly Negotiated Avg. Price by Delivery Period

(Beef Type Cattle: All live transactions converted to dressed price)

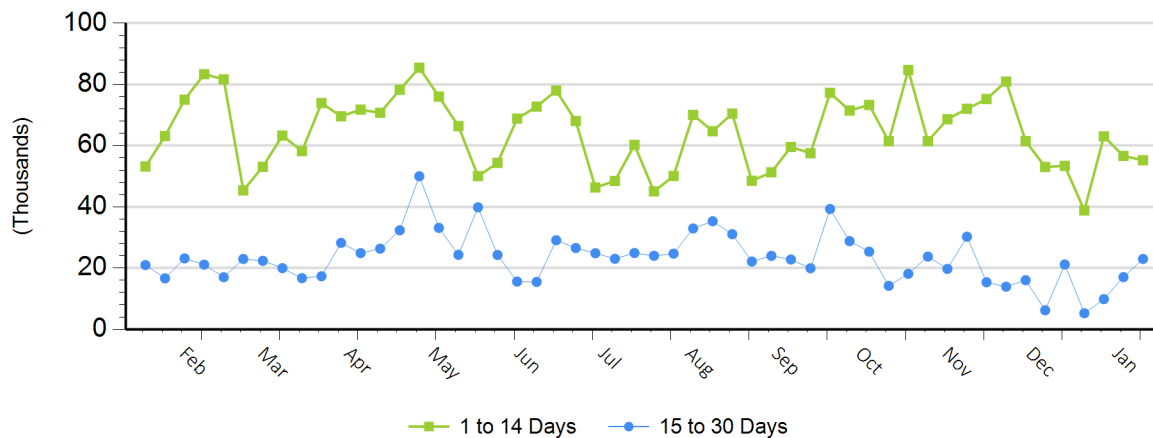
Avg Price (1 to 14 Days)

\$250.09

Avg Price (15 to 30 Days)

\$251.28

Weekly Negotiated Head Count by Delivery Period



For more Information about this report, please visit this link: [National Weekly Fed Cattle Comprehensive Overview](#)