



National Weekly Fed Cattle Comprehensive

Agricultural Marketing Service

Livestock, Poultry, and Grain Market News

January 04, 2023

Weighted Average Prices

(Weekly Information from 2pm Previous Monday to 10am Current Monday; Includes Negotiated, Formula Nets, Contract Nets, & Grid Nets)"

All Steers & Heifers (Beef Type Cattle)

Purchasing Basis	% Choice	Head	Avg Price	Week Ago Change	Year Ago Change
Dressed	> 65% Choice	211,679	\$253.25	\$0.91	\$32.53
	< 65% Choice	21,862	\$243.10	(\$0.21)	\$29.41
	Total all Grades	233,541	\$252.30	\$0.88	\$32.26
Live	> 65% Choice	86,979	\$158.55	\$0.95	\$19.10
	< 65% Choice	3,860	\$156.54	\$0.80	\$18.88
	Total all Grades	90,839	\$158.47	\$0.96	\$19.12

Dairy Bred

Purchasing Basis	% Choice	Head	Avg Price	Week Ago Change	Year Ago Change
Dressed	> 65% Choice	12,852	\$233.73	(\$3.53)	\$31.12
	< 65% Choice	1,307	\$220.26	\$2.68	\$26.43
	Total all Grades	14,159	\$232.48	(\$2.96)	\$30.39
Live	> 65% Choice	643	\$146.19	(\$5.01)	\$19.15
	< 65% Choice			(\$150.69)	(\$129.77)
	Total all Grades	643	\$146.19	(\$4.92)	\$18.81

Spread Comparison Values

Beef Type minus Dairy Type

(Weekly Information from 2pm Previous Monday to 10am Current Monday; Includes Negotiated, Formula Nets, Contract Nets, & Grid Nets)

Purchasing Basis	Current	Week Ago Change	Year Ago Change
Dressed	\$19.82	\$15.98	\$17.95
Live	\$12.28	\$6.40	\$11.97

Formula Net minus Negotiated

(Beef Type Cattle; All live transactions converted to a dressed price)

52 Week Rolling Average

\$1.52





National Weekly Fed Cattle Comprehensive

Agricultural Marketing Service
Livestock, Poultry, and Grain Market News

January 04, 2023

Formula Base minus Negotiated

(Beef Type Cattle; All live transactions converted to a dressed price)

52 Week Rolling Average

(\$2.18)



Formula Net minus Formula Base

(Beef Type Cattle; All live transactions converted to a dressed price)

52 Week Rolling Average

\$3.70



Grading % and Carcass Weights

(Beef Type Cattle; Includes Formula Net, Contract Net, and Grid Net; Grading % includes Choice & higher; Carcass Weight includes all grades; All live transactions converted to a dressed basis)

Grading %

83.6

Week Ago

83.0



Dressed Weight

887.2

Week Ago

892.3



Daily Formula Base Voume

Tue Dec 27

36,274

Wed Dec 28

105,923

Thu Dec 29

30,057

Fri Dec 30

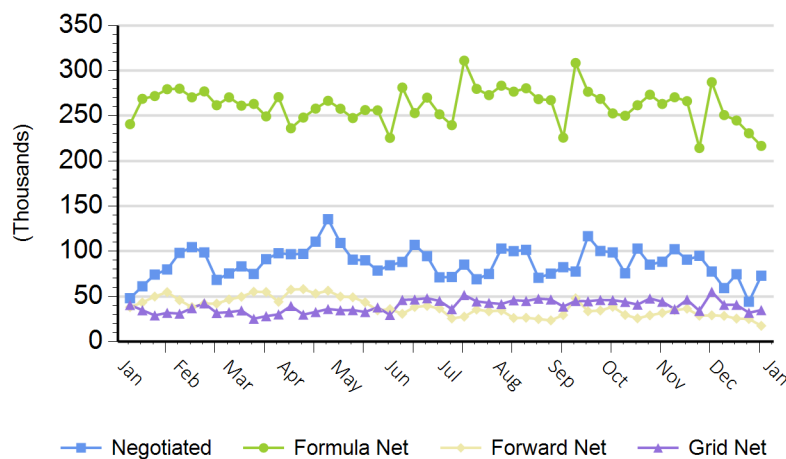
41,527

Mon Jan 02

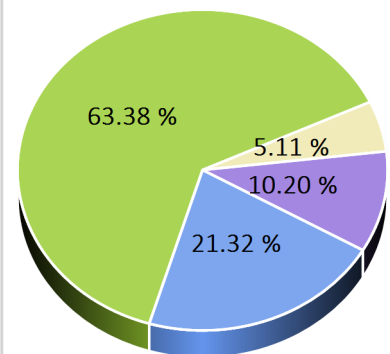
8,864

Purchasing Basis Volume

Weekly Purchasing Basis



Previous Week





National Weekly Fed Cattle Comprehensive

Agricultural Marketing Service
Livestock, Poultry, and Grain Market News

January 04, 2023

Weekly Negotiated Avg. Price by Delivery Period

(Beef Type Cattle: All live transactions converted to dressed price)

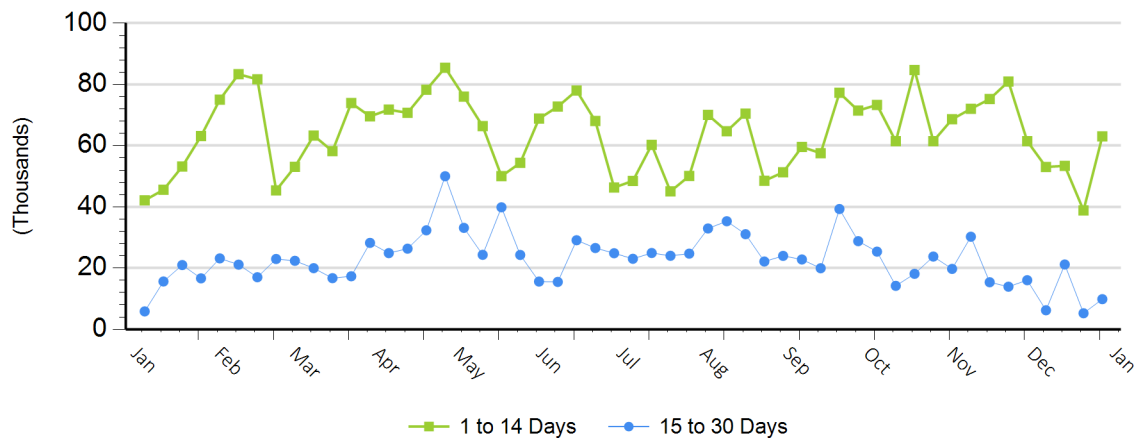
Avg Price (1 to 14 Days)

\$251.26

Avg Price (15 to 30 Days)

\$250.89

Weekly Negotiated Head Count by Delivery Period



For more Information about this report, please visit this link: [National Weekly Fed Cattle Comprehensive Overview](#)