



National Weekly Fed Cattle Comprehensive

Agricultural Marketing Service

Livestock, Poultry, and Grain Market News

December 13, 2022

Weighted Average Prices

(Weekly Information from 2pm Previous Monday to 10am Current Monday; Includes Negotiated, Formula Nets, Contract Nets, & Grid Nets)"

All Steers & Heifers (Beef Type Cattle)

Purchasing Basis	% Choice	Head	Avg Price	Week Ago Change	Year Ago Change
Dressed	> 65% Choice	240,098	\$251.84	\$3.25 ↑	\$28.03 ↑
	< 65% Choice	31,559	\$242.50	\$2.81 ↑	\$22.77 ↑
	Total all Grades	271,657	\$250.76	\$3.04 ↑	\$27.35 ↑
Live	> 65% Choice	77,219	\$156.91	\$0.39 ↑	\$16.43 ↑
	< 65% Choice	6,231	\$154.88	\$1.96 ↑	\$16.21 ↑
	Total all Grades	83,450	\$156.76	\$0.54 ↑	\$16.49 ↑

Dairy Bred

Purchasing Basis	% Choice	Head	Avg Price	Week Ago Change	Year Ago Change
Dressed	> 65% Choice	17,494	\$238.14	\$3.00 ↑	\$35.59 ↑
	< 65% Choice	1,697	\$220.59	\$1.23 ↑	\$29.85 ↑
	Total all Grades	19,191	\$236.59	\$3.31 ↑	\$34.62 ↑
Live	> 65% Choice	2,170	\$141.38	(\$5.47) ↓	\$11.44 ↑
	< 65% Choice	139	\$151.42	\$3.53 ↑	\$17.42 ↑
	Total all Grades	2,309	\$141.99	(\$4.88) ↓	\$10.69 ↑

Spread Comparison Values

Beef Type minus Dairy Type

(Weekly Information from 2pm Previous Monday to 10am Current Monday; Includes Negotiated, Formula Nets, Contract Nets, & Grid Nets)

Purchasing Basis	Current	Week Ago Change	Year Ago Change
Dressed	\$14.17 ↑	\$14.44 ↑	\$21.44 ↑
Live	\$14.77 ↑	\$9.35 ↑	\$8.97 ↑

Formula Net minus Negotiated

(Beef Type Cattle; All live transactions converted to a dressed price)

52 Week Rolling Average

\$1.27





National Weekly Fed Cattle Comprehensive

Agricultural Marketing Service
Livestock, Poultry, and Grain Market News

December 13, 2022

Formula Base minus Negotiated

(Beef Type Cattle; All live transactions converted to a dressed price)

52 Week Rolling Average

(\$2.46)



Formula Net minus Formula Base

(Beef Type Cattle; All live transactions converted to a dressed price)

52 Week Rolling Average

\$3.73



Grading % and Carcass Weights

(Beef Type Cattle; Includes Formula Net, Contract Net, and Grid Net; Grading % includes Choice & higher; Carcass Weight includes all grades; All live transactions converted to a dressed basis)

Grading %

81.5

Week Ago

81.6



Dressed Weight

893.6

Week Ago

888.7



Daily Formula Base Volume

Tue Dec 06

34,774

Wed Dec 07

36,876

Thu Dec 08

35,054

Fri Dec 09

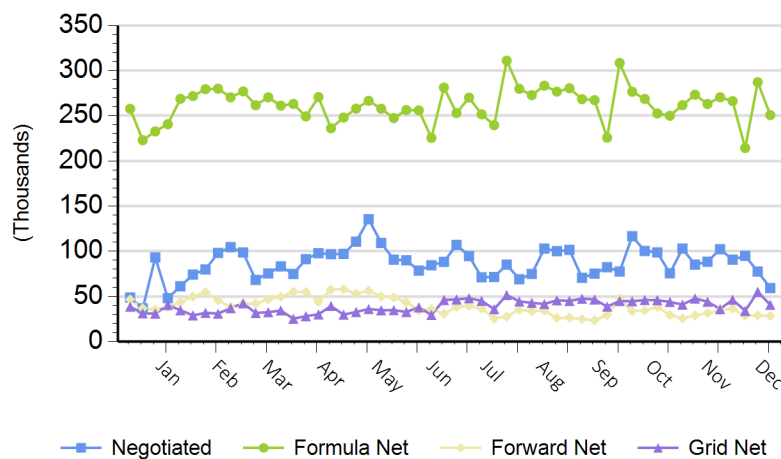
28,607

Mon Dec 12

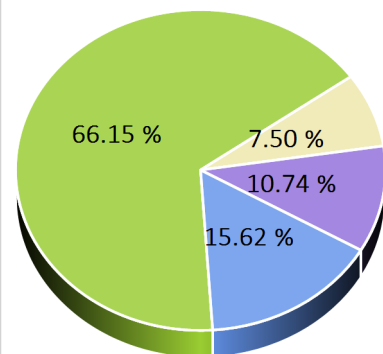
128,273

Purchasing Basis Volume

Weekly Purchasing Basis



Previous Week





National Weekly Fed Cattle Comprehensive

Agricultural Marketing Service
Livestock, Poultry, and Grain Market News

December 13, 2022

Weekly Negotiated Avg. Price by Delivery Period

(Beef Type Cattle: All live transactions converted to dressed price)

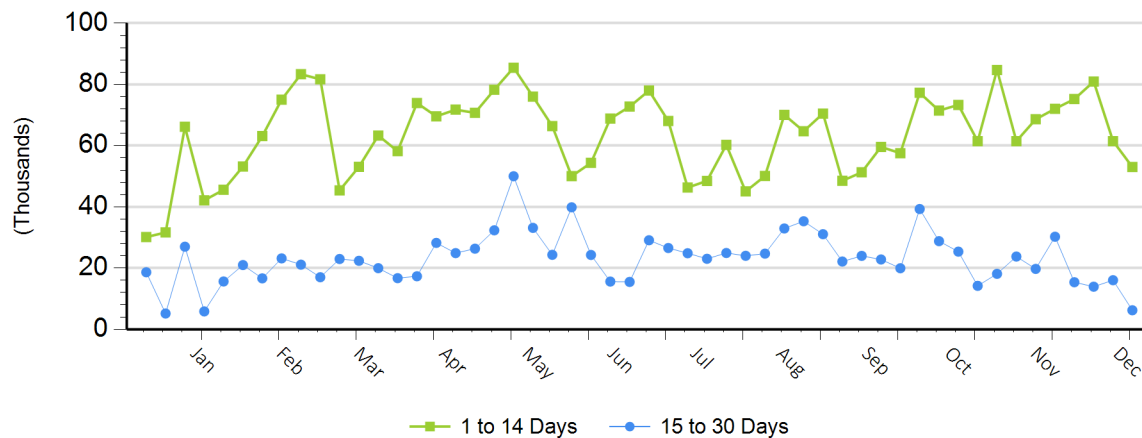
Avg Price (1 to 14 Days)

\$246.89

Avg Price (15 to 30 Days)

\$246.96

Weekly Negotiated Head Count by Delivery Period



For more Information about this report, please visit this link: [National Weekly Fed Cattle Comprehensive Overview](#)