



National Weekly Fed Cattle Comprehensive

Agricultural Marketing Service

Livestock, Poultry, and Grain Market News

November 01, 2022

Weighted Average Prices

(Weekly Information from 2pm Previous Monday to 10am Current Monday; Includes Negotiated, Formula Nets, Contract Nets, & Grid Nets)"

All Steers & Heifers (Beef Type Cattle)

Purchasing Basis	% Choice	Head	Avg Price	Week Ago Change	Year Ago Change
Dressed	> 65% Choice	257,358	\$238.95	\$2.43 ↑	\$37.18 ↑
	< 65% Choice	45,351	\$229.05	\$2.75 ↑	\$34.49 ↑
	Total all Grades	302,709	\$237.47	\$2.67 ↑	\$36.73 ↑
Live	> 65% Choice	100,560	\$151.34	\$1.46 ↑	\$24.55 ↑
	< 65% Choice	8,599	\$148.18	\$1.54 ↑	\$23.46 ↑
	Total all Grades	109,159	\$151.10	\$1.44 ↑	\$24.50 ↑

Dairy Bred

Purchasing Basis	% Choice	Head	Avg Price	Week Ago Change	Year Ago Change
Dressed	> 65% Choice	16,277	\$228.20	\$2.33 ↑	\$35.83 ↑
	< 65% Choice	2,309	\$211.99	\$0.89 ↑	\$31.08 ↑
	Total all Grades	18,586	\$226.18	\$2.61 ↑	\$35.38 ↑
Live	> 65% Choice	1,291	\$139.55	(\$0.39) ↓	\$24.30 ↑
	< 65% Choice	373	\$141.22	(\$0.98) ↓	\$141.22 ↑
	Total all Grades	1,664	\$139.93	(\$0.22) ↓	\$24.68 ↑

Spread Comparison Values

Beef Type minus Dairy Type

(Weekly Information from 2pm Previous Monday to 10am Current Monday; Includes Negotiated, Formula Nets, Contract Nets, & Grid Nets)

Purchasing Basis	Current	Week Ago Change	Year Ago Change
Dressed	\$11.29 ↑	\$11.23 ↑	\$9.94 ↑
Live	\$11.17 ↑	\$9.51 ↑	\$11.35 ↑

Formula Net minus Negotiated

(Beef Type Cattle; All live transactions converted to a dressed price)

52 Week Rolling Average

\$1.36





National Weekly Fed Cattle Comprehensive

Agricultural Marketing Service
Livestock, Poultry, and Grain Market News

November 01, 2022

Formula Base minus Negotiated

(Beef Type Cattle; All live transactions converted to a dressed price)

52 Week Rolling Average

(\$2.23)



Formula Net minus Formula Base

(Beef Type Cattle; All live transactions converted to a dressed price)

52 Week Rolling Average

\$3.59



Grading % and Carcass Weights

(Beef Type Cattle; Includes Formula Net, Contract Net, and Grid Net; Grading % includes Choice & higher; Carcass Weight includes all grades; All live transactions converted to a dressed basis)

Grading %

79.5

Week Ago

79.1



Dressed Weight

890.5

Week Ago

889.5



Daily Formula Base Volume

Tue Oct 25

31,828

Wed Oct 26

32,756

Thu Oct 27

39,285

Fri Oct 28

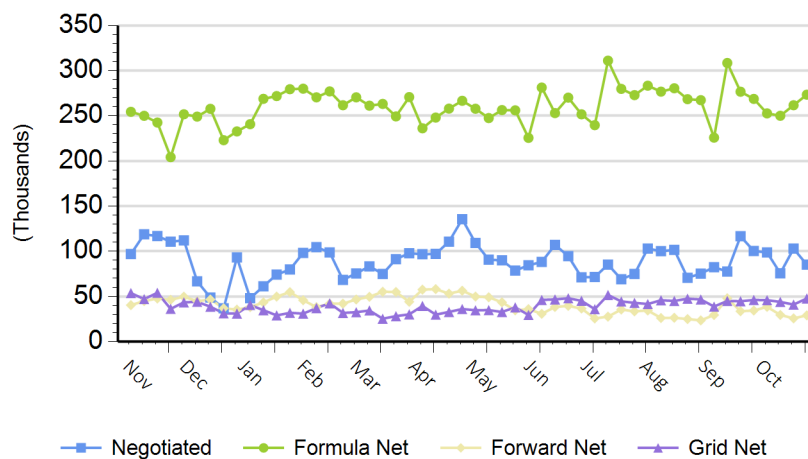
29,373

Mon Oct 31

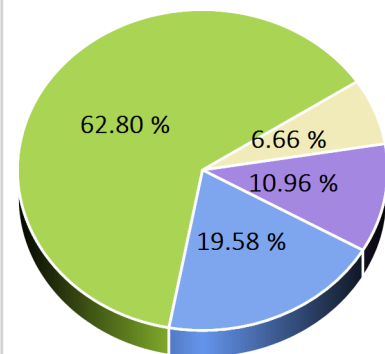
126,842

Purchasing Basis Volume

Weekly Purchasing Basis



Previous Week





National Weekly Fed Cattle Comprehensive

Agricultural Marketing Service
Livestock, Poultry, and Grain Market News

November 01, 2022

Weekly Negotiated Avg. Price by Delivery Period

(Beef Type Cattle: All live transactions converted to dressed price)

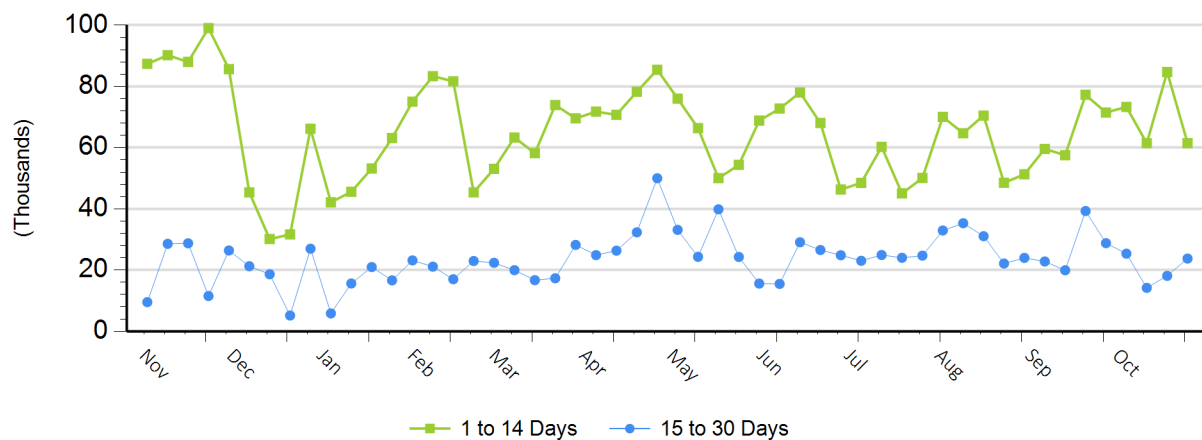
Avg Price (1 to 14 Days)

\$240.57

Avg Price (15 to 30 Days)

\$240.85

Weekly Negotiated Head Count by Delivery Period



For more Information about this report, please visit this link: [National Weekly Fed Cattle Comprehensive Overview](#)