



# National Weekly Fed Cattle Comprehensive

Agricultural Marketing Service

Livestock, Poultry, and Grain Market News

October 25, 2022

## Weighted Average Prices

(Weekly Information from 2pm Previous Monday to 10am Current Monday; Includes Negotiated, Formula Nets, Contract Nets, & Grid Nets)"

### All Steers & Heifers (Beef Type Cattle)

Purchasing Basis	% Choice	Head	Avg Price	Week Ago Change	Year Ago Change
Dressed	> 65% Choice	235,215	\$236.52	\$1.77 ↑	\$35.69 ↑
	< 65% Choice	47,460	\$226.30	\$0.92 ↑	\$31.85 ↑
	Total all Grades	282,675	\$234.80	\$1.30 ↑	\$35.03 ↑
Live	> 65% Choice	119,912	\$149.88	\$2.74 ↑	\$24.09 ↑
	< 65% Choice	8,776	\$146.64	\$1.73 ↑	\$22.88 ↑
	Total all Grades	128,688	\$149.66	\$2.71 ↑	\$24.03 ↑

### Dairy Bred

Purchasing Basis	% Choice	Head	Avg Price	Week Ago Change	Year Ago Change
Dressed	> 65% Choice	12,077	\$225.87	\$1.53 ↑	\$37.30 ↑
	< 65% Choice	2,232	\$211.10	\$0.25 ↑	\$33.62 ↑
	Total all Grades	14,309	\$223.57	\$0.83 ↑	\$36.89 ↑
Live	> 65% Choice	1,654	\$139.94	\$3.00 ↑	\$27.31 ↑
	< 65% Choice	172	\$142.20	\$3.22 ↑	\$142.20 ↑
	Total all Grades	1,826	\$140.15	\$2.89 ↑	\$27.52 ↑

## Spread Comparison Values

### Beef Type minus Dairy Type

(Weekly Information from 2pm Previous Monday to 10am Current Monday; Includes Negotiated, Formula Nets, Contract Nets, & Grid Nets)

Purchasing Basis	Current	Week Ago Change	Year Ago Change
Dressed	\$11.23 ↑	\$10.76 ↑	\$13.09 ↑
Live	\$9.51 ↑	\$9.69 ↑	\$13.00 ↑

### Formula Net minus Negotiated

(Beef Type Cattle; All live transactions converted to a dressed price)

### 52 Week Rolling Average

\$1.48





# National Weekly Fed Cattle Comprehensive

Agricultural Marketing Service

Livestock, Poultry, and Grain Market News

October 25, 2022

## Formula Base minus Negotiated

(Beef Type Cattle; All live transactions converted to a dressed price)

52 Week Rolling Average

(\$2.09)



## Formula Net minus Formula Base

(Beef Type Cattle; All live transactions converted to a dressed price)

52 Week Rolling Average

\$3.57



## Grading % and Carcass Weights

(Beef Type Cattle; Includes Formula Net, Contract Net, and Grid Net; Grading % includes Choice & higher; Carcass Weight includes all grades; All live transactions converted to a dressed basis)

Grading %

79.1

Week Ago

79.8



Dressed Weight

889.5

Week Ago

888.2



## Daily Formula Base Volume

Tue Oct 18

76,699

Wed Oct 19

37,474

Thu Oct 20

30,270

Fri Oct 21

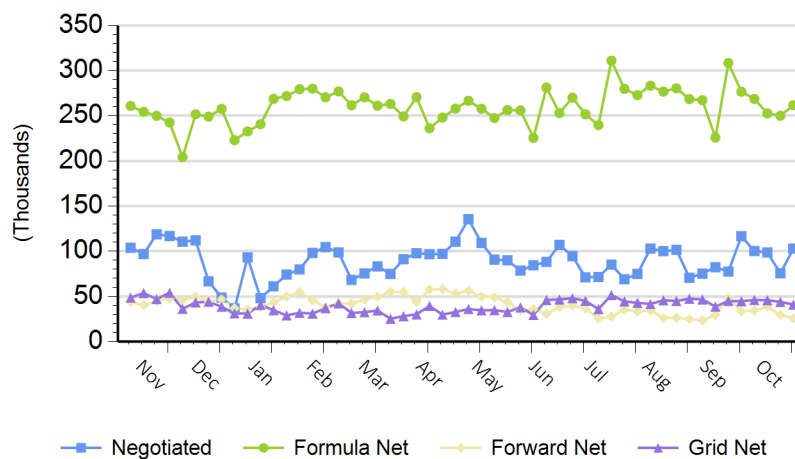
30,221

Mon Oct 24

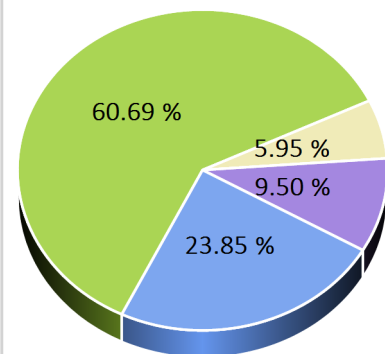
146,054

## Purchasing Basis Volume

### Weekly Purchasing Basis



### Previous Week





# National Weekly Fed Cattle Comprehensive

Agricultural Marketing Service  
Livestock, Poultry, and Grain Market News

October 25, 2022

## Weekly Negotiated Avg. Price by Delivery Period

(Beef Type Cattle: All live transactions converted to dressed price)

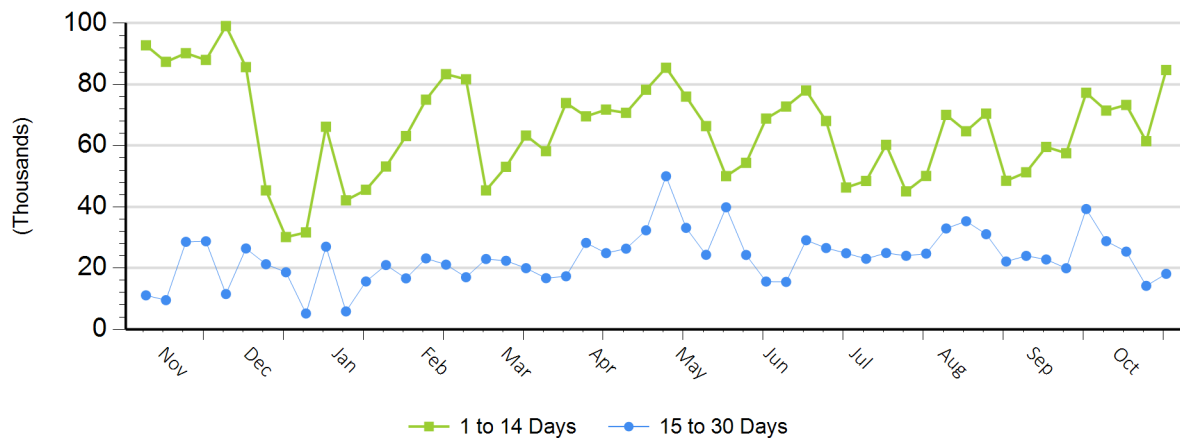
**Avg Price (1 to 14 Days)**

\$237.48

**Avg Price (15 to 30 Days)**

\$235.45

## Weekly Negotiated Head Count by Delivery Period



For more Information about this report, please visit this link: [National Weekly Fed Cattle Comprehensive Overview](#)