



# National Weekly Fed Cattle Comprehensive

Agricultural Marketing Service

Livestock, Poultry, and Grain Market News

October 04, 2022

## Weighted Average Prices

(Weekly Information from 2pm Previous Monday to 10am Current Monday; Includes Negotiated, Formula Nets, Contract Nets, & Grid Nets)"

### All Steers & Heifers (Beef Type Cattle)

Purchasing Basis	% Choice	Head	Avg Price	Week Ago Change	Year Ago Change
Dressed	> 65% Choice	252,045	\$232.59	\$1.74 ↑	\$30.59 ↑
	< 65% Choice	47,518	\$223.44	\$1.36 ↑	\$30.49 ↑
	Total all Grades	299,563	\$231.14	\$1.91 ↑	\$30.19 ↑
Live	> 65% Choice	120,837	\$145.68	\$0.43 ↑	\$20.40 ↑
	< 65% Choice	7,806	\$143.56	\$0.78 ↑	\$19.93 ↑
	Total all Grades	128,643	\$145.55	\$0.51 ↑	\$20.43 ↑

### Dairy Bred

Purchasing Basis	% Choice	Head	Avg Price	Week Ago Change	Year Ago Change
Dressed	> 65% Choice	15,936	\$223.22	\$2.50 ↑	\$32.44 ↑
	< 65% Choice	1,377	\$210.50	\$0.27 ↑	\$33.43 ↑
	Total all Grades	17,313	\$222.21	\$3.08 ↑	\$33.15 ↑
Live	> 65% Choice	2,026	\$134.92	(\$2.93) ↓	\$19.47 ↑
	< 65% Choice	548	\$129.31	(\$2.68) ↓	\$19.62 ↑
	Total all Grades	2,574	\$133.72	(\$3.70) ↓	\$18.42 ↑

## Spread Comparison Values

### Beef Type minus Dairy Type

(Weekly Information from 2pm Previous Monday to 10am Current Monday; Includes Negotiated, Formula Nets, Contract Nets, & Grid Nets)

Purchasing Basis	Current	Week Ago Change	Year Ago Change
Dressed	\$8.93 ↑	\$10.10 ↑	\$11.89 ↑
Live	\$11.83 ↑	\$7.62 ↑	\$9.82 ↑

### Formula Net minus Negotiated

(Beef Type Cattle; All live transactions converted to a dressed price)

#### 52 Week Rolling Average

\$1.73





# National Weekly Fed Cattle Comprehensive

Agricultural Marketing Service  
Livestock, Poultry, and Grain Market News

October 04, 2022

## Formula Base minus Negotiated

(Beef Type Cattle; All live transactions converted to a dressed price)

52 Week Rolling Average

(\$1.82)



## Formula Net minus Formula Base

(Beef Type Cattle; All live transactions converted to a dressed price)

52 Week Rolling Average

\$3.55



## Grading % and Carcass Weights

(Beef Type Cattle; Includes Formula Net, Contract Net, and Grid Net; Grading % includes Choice & higher; Carcass Weight includes all grades; All live transactions converted to a dressed basis)

Grading %

78.8

Week Ago

78.0



Dressed Weight

885.0

Week Ago

882.7



## Daily Formula Base Volume

Tue Sep 27

25,406

Wed Sep 28

34,583

Thu Sep 29

40,074

Fri Sep 30

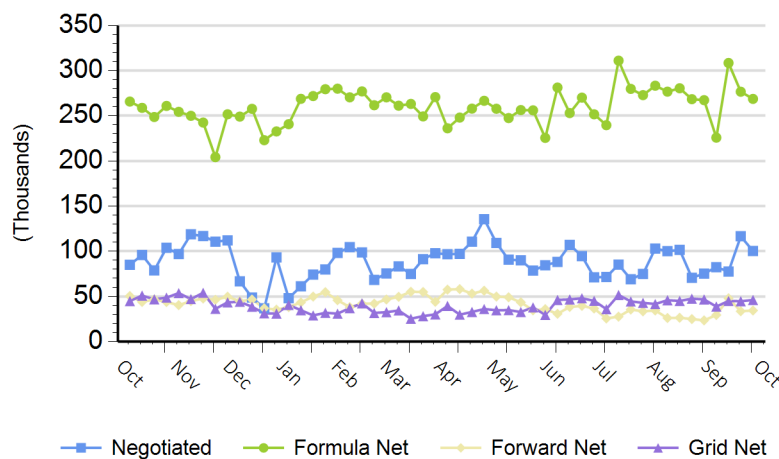
27,571

Mon Oct 03

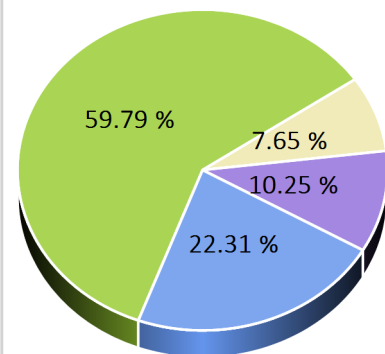
135,333

## Purchasing Basis Volume

### Weekly Purchasing Basis



### Previous Week





# National Weekly Fed Cattle Comprehensive

Agricultural Marketing Service  
Livestock, Poultry, and Grain Market News

October 04, 2022

## Weekly Negotiated Avg. Price by Delivery Period

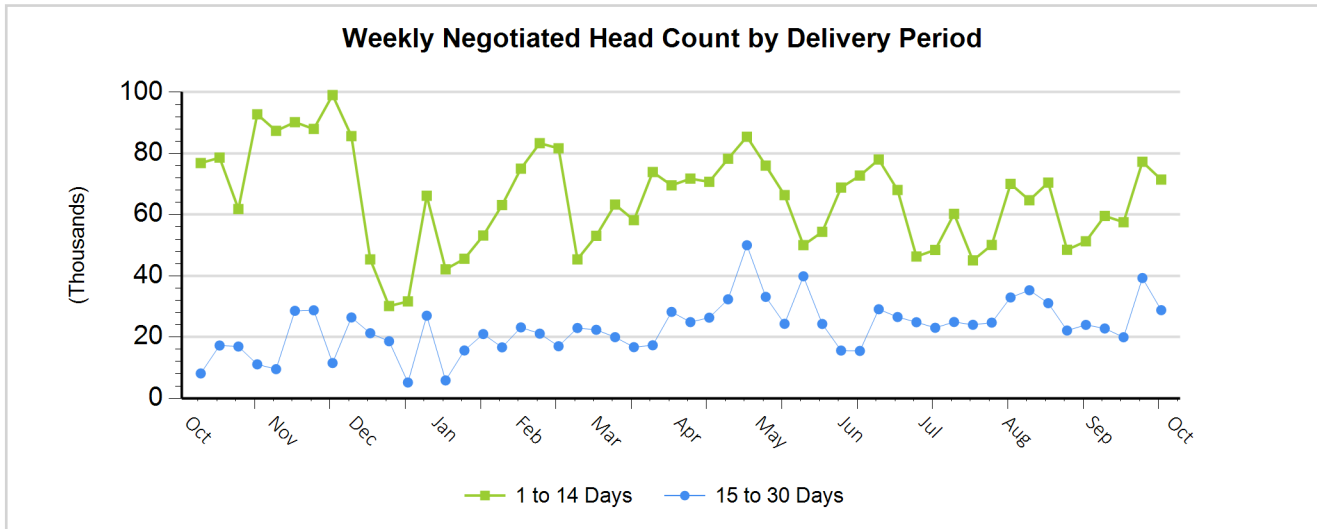
(Beef Type Cattle: All live transactions converted to dressed price)

Avg Price (1 to 14 Days)

\$228.89

Avg Price (15 to 30 Days)

\$230.45



For more Information about this report, please visit this link: [National Weekly Fed Cattle Comprehensive Overview](#)