



# National Weekly Fed Cattle Comprehensive

Agricultural Marketing Service

Livestock, Poultry, and Grain Market News

September 13, 2022

## Weighted Average Prices

(Weekly Information from 2pm Previous Monday to 10am Current Monday; Includes Negotiated, Formula Nets, Contract Nets, & Grid Nets)"

### All Steers & Heifers (Beef Type Cattle)

Purchasing Basis	% Choice	Head	Avg Price	Week Ago Change	Year Ago Change
Dressed	> 65% Choice	216,298	\$232.12	(\$1.05) ↓	\$28.53 ↑
	< 65% Choice	33,770	\$223.66	\$1.31 ↑	\$29.53 ↑
	Total all Grades	250,068	\$230.98	(\$0.53) ↓	\$28.34 ↑
Live	> 65% Choice	94,580	\$144.43	(\$1.01) ↓	\$17.91 ↑
	< 65% Choice	11,128	\$141.74	\$0.44 ↑	\$17.15 ↑
	Total all Grades	105,708	\$144.15	(\$0.85) ↓	\$17.79 ↑

### Dairy Bred

Purchasing Basis	% Choice	Head	Avg Price	Week Ago Change	Year Ago Change
Dressed	> 65% Choice	14,690	\$220.22	(\$3.57) ↓	\$29.29 ↑
	< 65% Choice	2,403	\$208.41	(\$2.15) ↓	\$31.68 ↑
	Total all Grades	17,093	\$218.56	(\$3.38) ↓	\$28.62 ↑
Live	> 65% Choice	1,304	\$134.75	\$0.78 ↑	\$18.64 ↑
	< 65% Choice	175	\$135.58	\$0.48 ↑	\$28.48 ↑
	Total all Grades	1,479	\$134.85	\$0.80 ↑	\$19.02 ↑

## Spread Comparison Values

### Beef Type minus Dairy Type

(Weekly Information from 2pm Previous Monday to 10am Current Monday; Includes Negotiated, Formula Nets, Contract Nets, & Grid Nets)

Purchasing Basis	Current	Week Ago Change	Year Ago Change
Dressed	\$12.42 ↑	\$9.57 ↑	\$12.70 ↑
Live	\$9.30 ↑	\$10.95 ↑	\$10.53 ↑

### Formula Net minus Negotiated

(Beef Type Cattle; All live transactions converted to a dressed price)

#### 52 Week Rolling Average

\$1.75





# National Weekly Fed Cattle Comprehensive

Agricultural Marketing Service  
Livestock, Poultry, and Grain Market News

September 13, 2022

## Formula Base minus Negotiated

(Beef Type Cattle; All live transactions converted to a dressed price)

52 Week Rolling Average

(\$1.80)



## Formula Net minus Formula Base

(Beef Type Cattle; All live transactions converted to a dressed price)

52 Week Rolling Average

\$3.55



## Grading % and Carcass Weights

(Beef Type Cattle; Includes Formula Net, Contract Net, and Grid Net; Grading % includes Choice & higher; Carcass Weight includes all grades; All live transactions converted to a dressed basis)

Grading %

79.7

Week Ago

78.6



Dressed Weight

880.3

Week Ago

875.6



## Daily Formula Base Volume

Tue Sep 06

89,691

Wed Sep 07

56,899

Thu Sep 08

32,387

Fri Sep 09

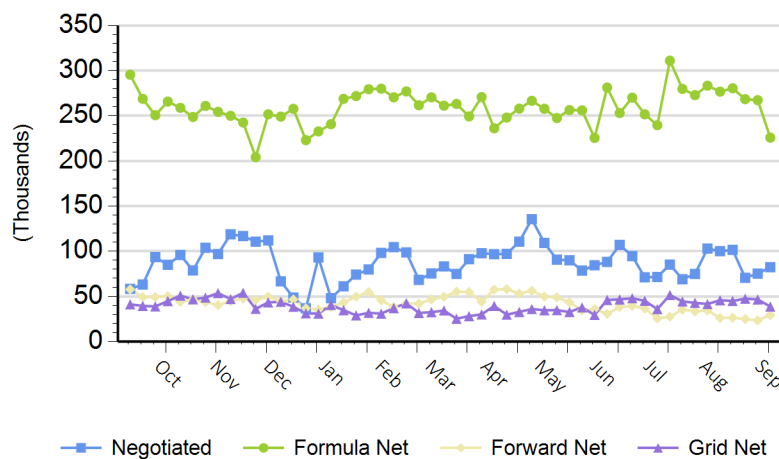
43,924

Mon Sep 12

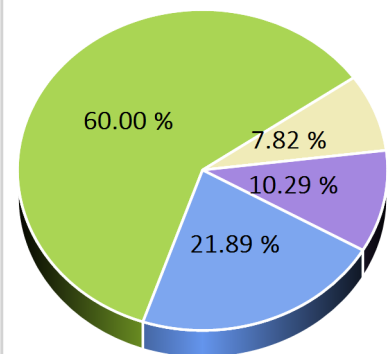
152,723

## Purchasing Basis Volume

### Weekly Purchasing Basis



### Previous Week





# National Weekly Fed Cattle Comprehensive

Agricultural Marketing Service  
Livestock, Poultry, and Grain Market News

September 13, 2022

## Weekly Negotiated Avg. Price by Delivery Period

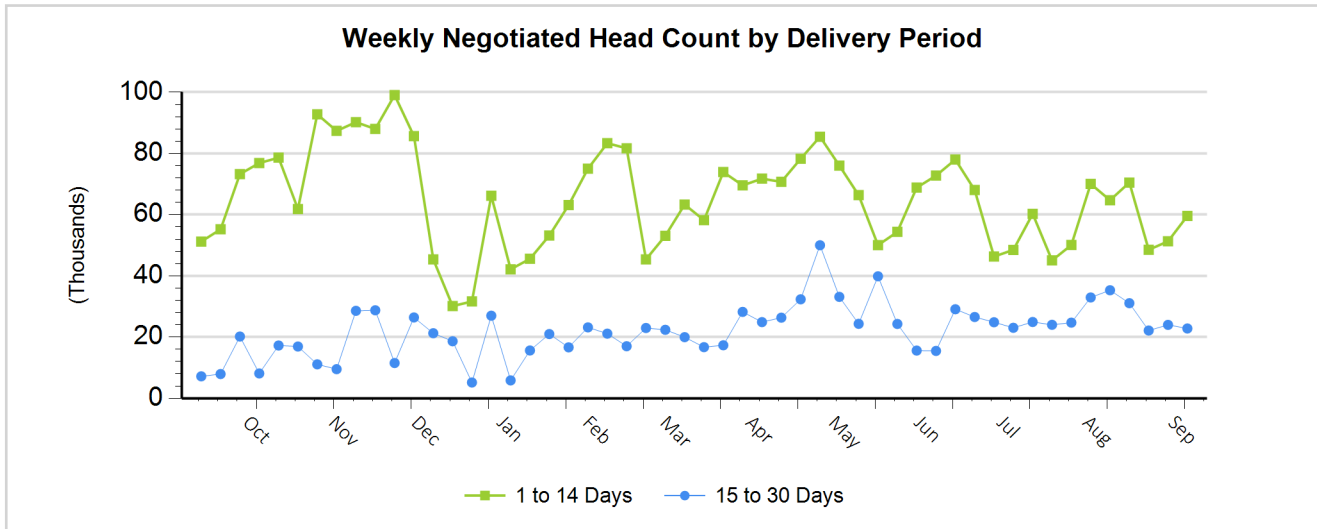
(Beef Type Cattle: All live transactions converted to dressed price)

Avg Price (1 to 14 Days)

\$225.79

Avg Price (15 to 30 Days)

\$227.11



For more Information about this report, please visit this link: [National Weekly Fed Cattle Comprehensive Overview](#)