



National Weekly Fed Cattle Comprehensive

Agricultural Marketing Service

Livestock, Poultry, and Grain Market News

September 06, 2022

Weighted Average Prices

(Weekly Information from 2pm Previous Monday to 10am Current Monday; Includes Negotiated, Formula Nets, Contract Nets, & Grid Nets)"

All Steers & Heifers (Beef Type Cattle)

Purchasing Basis	% Choice	Head	Avg Price	Week Ago Change	Year Ago Change
Dressed	> 65% Choice	243,341	\$233.17	\$1.09 ↑	\$31.01 ↑
	< 65% Choice	44,057	\$222.35	\$1.83 ↑	\$29.57 ↑
	Total all Grades	287,398	\$231.51	\$1.20 ↑	\$30.51 ↑
Live	> 65% Choice	91,836	\$145.44	\$0.05 ↑	\$18.61 ↑
	< 65% Choice	10,706	\$141.30	(\$0.06) ↓	\$17.76 ↑
	Total all Grades	102,542	\$145.00	(\$0.07) ↓	\$18.53 ↑

Dairy Bred

Purchasing Basis	% Choice	Head	Avg Price	Week Ago Change	Year Ago Change
Dressed	> 65% Choice	14,391	\$223.79	\$0.42 ↑	\$32.57 ↑
	< 65% Choice	2,349	\$210.56	(\$0.34) ↓	\$35.08 ↑
	Total all Grades	16,740	\$221.94	\$0.02 ↑	\$32.88 ↑
Live	> 65% Choice	2,762	\$133.97	(\$0.32) ↓	\$18.18 ↑
	< 65% Choice	202	\$135.10	\$2.16 ↑	\$26.56 ↑
	Total all Grades	2,964	\$134.05	(\$0.01) ↓	\$20.47 ↑

Spread Comparison Values

Beef Type minus Dairy Type

(Weekly Information from 2pm Previous Monday to 10am Current Monday; Includes Negotiated, Formula Nets, Contract Nets, & Grid Nets)

Purchasing Basis	Current	Week Ago Change	Year Ago Change
Dressed	\$9.57 ↑	\$8.39 ↑	\$11.94 ↑
Live	\$10.95 ↑	\$11.01 ↑	\$12.89 ↑

Formula Net minus Negotiated

(Beef Type Cattle; All live transactions converted to a dressed price)

52 Week Rolling Average

\$1.72





National Weekly Fed Cattle Comprehensive

Agricultural Marketing Service
Livestock, Poultry, and Grain Market News

September 06, 2022

Formula Base minus Negotiated

(Beef Type Cattle; All live transactions converted to a dressed price)

52 Week Rolling Average

(\$1.83)



Formula Net minus Formula Base

(Beef Type Cattle; All live transactions converted to a dressed price)

52 Week Rolling Average

\$3.55



Grading % and Carcass Weights

(Beef Type Cattle; Includes Formula Net, Contract Net, and Grid Net; Grading % includes Choice & higher; Carcass Weight includes all grades; All live transactions converted to a dressed basis)

Grading %

78.6

Week Ago

79.1



Dressed Weight

875.6

Week Ago

872.4



Daily Formula Base Voume

Tue Aug 30

37,228

Wed Aug 31

29,171

Thu Sep 01

43,388

Fri Sep 02

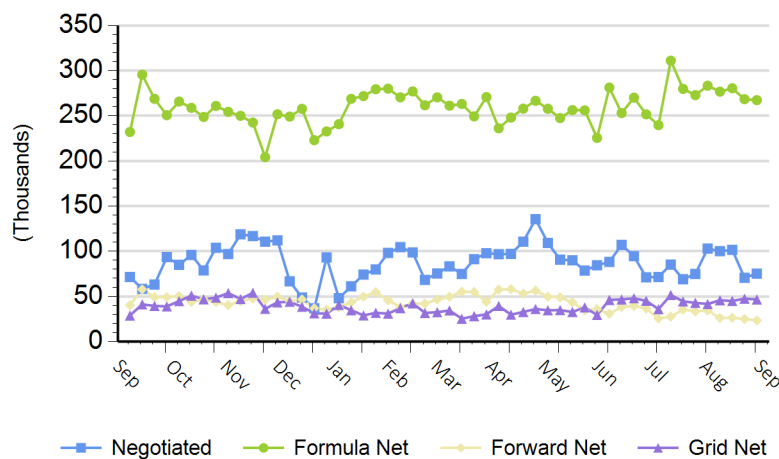
26,450

Mon Sep 05

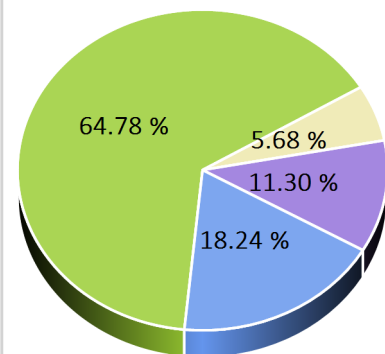
17,037

Purchasing Basis Volume

Weekly Purchasing Basis



Previous Week





National Weekly Fed Cattle Comprehensive

Agricultural Marketing Service
Livestock, Poultry, and Grain Market News

September 06, 2022

Weekly Negotiated Avg. Price by Delivery Period

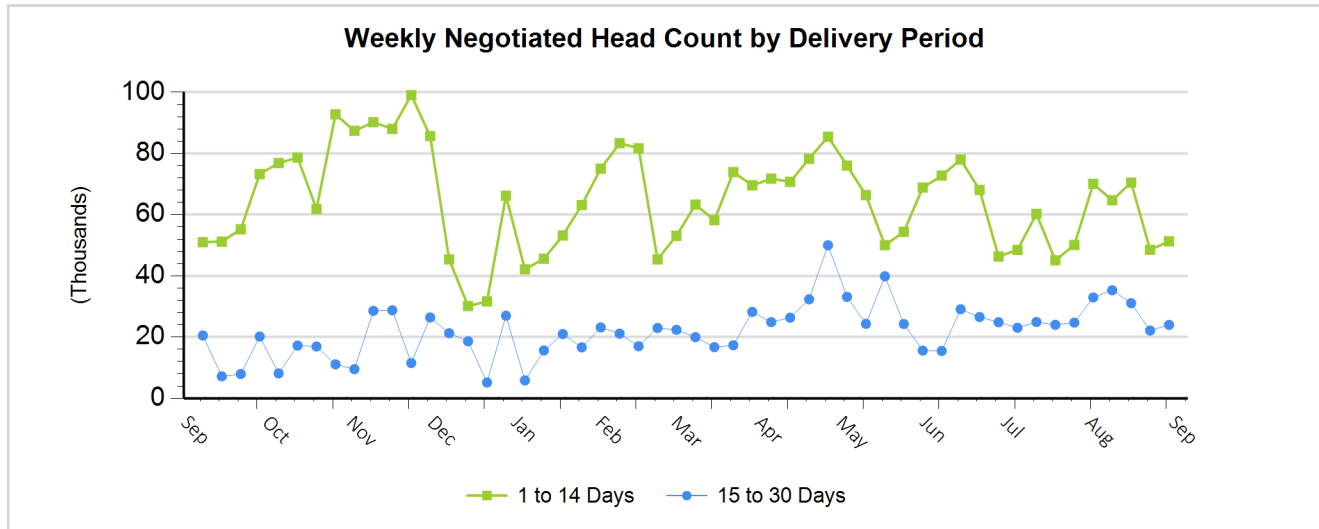
(Beef Type Cattle: All live transactions converted to dressed price)

Avg Price (1 to 14 Days)

\$226.74

Avg Price (15 to 30 Days)

\$228.96



For more Information about this report, please visit this link: [National Weekly Fed Cattle Comprehensive Overview](#)