



National Weekly Fed Cattle Comprehensive

Agricultural Marketing Service

Livestock, Poultry, and Grain Market News

August 30, 2022

Weighted Average Prices

(Weekly Information from 2pm Previous Monday to 10am Current Monday; Includes Negotiated, Formula Nets, Contract Nets, & Grid Nets)"

All Steers & Heifers (Beef Type Cattle)

Purchasing Basis	% Choice	Head	Avg Price	Week Ago Change	Year Ago Change
Dressed	> 65% Choice	240,522	\$232.08	\$3.83 ↑	\$31.34 ↑
	< 65% Choice	43,500	\$220.52	\$3.39 ↑	\$29.91 ↑
	Total all Grades	284,022	\$230.31	\$3.45 ↑	\$30.87 ↑
Live	> 65% Choice	96,407	\$145.39	(\$0.49) ↓	\$19.63 ↑
	< 65% Choice	8,350	\$141.36	\$1.62 ↑	\$18.76 ↑
	Total all Grades	104,757	\$145.07	(\$0.43) ↓	\$19.76 ↑

Dairy Bred

Purchasing Basis	% Choice	Head	Avg Price	Week Ago Change	Year Ago Change
Dressed	> 65% Choice	14,294	\$223.37	\$3.13 ↑	\$34.06 ↑
	< 65% Choice	1,887	\$210.90	\$4.87 ↑	\$30.68 ↑
	Total all Grades	16,181	\$221.92	\$2.79 ↑	\$33.59 ↑
Live	> 65% Choice	2,959	\$134.29	(\$2.36) ↓	\$18.82 ↑
	< 65% Choice	590	\$132.94	\$0.10 ↑	\$29.24 ↑
	Total all Grades	3,549	\$134.06	(\$2.30) ↓	\$20.99 ↑

Spread Comparison Values

Beef Type minus Dairy Type

(Weekly Information from 2pm Previous Monday to 10am Current Monday; Includes Negotiated, Formula Nets, Contract Nets, & Grid Nets)

Purchasing Basis	Current	Week Ago Change	Year Ago Change
Dressed	\$8.39 ↑	\$7.73 ↑	\$11.11 ↑
Live	\$11.01 ↑	\$9.14 ↑	\$12.24 ↑

Formula Net minus Negotiated

(Beef Type Cattle; All live transactions converted to a dressed price)

52 Week Rolling Average

\$1.51





National Weekly Fed Cattle Comprehensive

Agricultural Marketing Service
Livestock, Poultry, and Grain Market News

August 30, 2022

Formula Base minus Negotiated

(Beef Type Cattle; All live transactions converted to a dressed price)

52 Week Rolling Average

(\$2.05)



Formula Net minus Formula Base

(Beef Type Cattle; All live transactions converted to a dressed price)

52 Week Rolling Average

\$3.56



Grading % and Carcass Weights

(Beef Type Cattle; Includes Formula Net, Contract Net, and Grid Net; Grading % includes Choice & higher; Carcass Weight includes all grades; All live transactions converted to a dressed basis)

Grading %

79.1

Week Ago

79.9



Dressed Weight

872.4

Week Ago

874.6



Daily Formula Base Voume

Tue Aug 23

25,968

Wed Aug 24

33,817

Thu Aug 25

33,029

Fri Aug 26

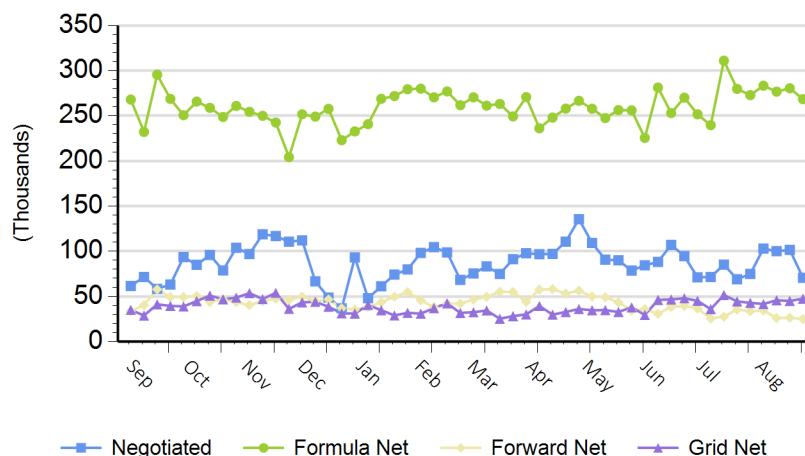
23,516

Mon Aug 29

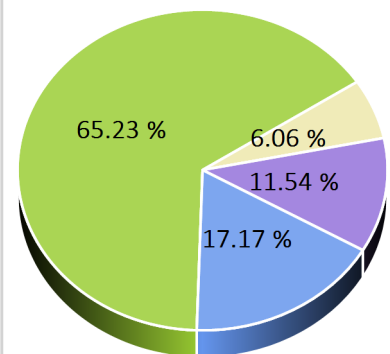
141,436

Purchasing Basis Volume

Weekly Purchasing Basis



Previous Week





National Weekly Fed Cattle Comprehensive

Agricultural Marketing Service
Livestock, Poultry, and Grain Market News

August 30, 2022

Weekly Negotiated Avg. Price by Delivery Period

(Beef Type Cattle: All live transactions converted to dressed price)

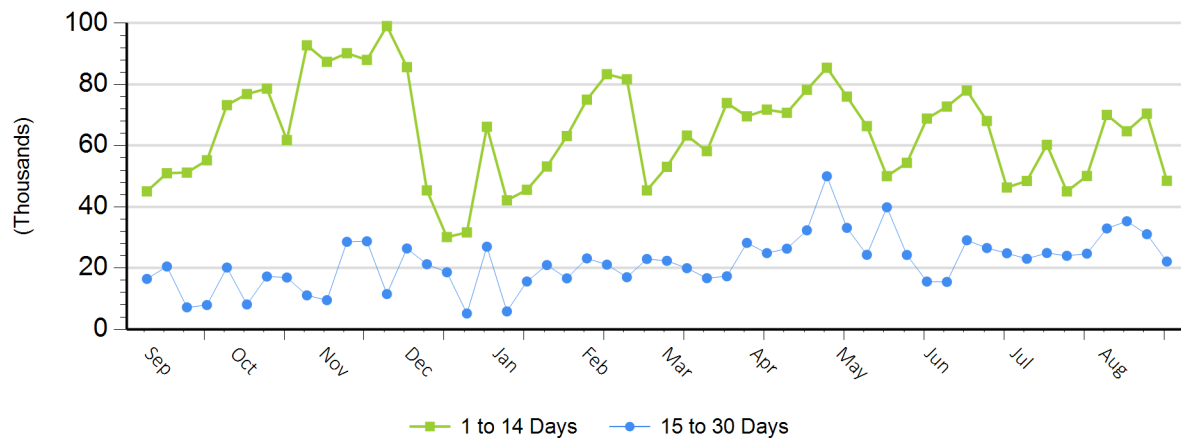
Avg Price (1 to 14 Days)

\$228.88

Avg Price (15 to 30 Days)

\$232.26

Weekly Negotiated Head Count by Delivery Period



For more Information about this report, please visit this link: [National Weekly Fed Cattle Comprehensive Overview](#)