



National Weekly Fed Cattle Comprehensive

Agricultural Marketing Service

Livestock, Poultry, and Grain Market News

August 23, 2022

Weighted Average Prices

(Weekly Information from 2pm Previous Monday to 10am Current Monday; Includes Negotiated, Formula Nets, Contract Nets, & Grid Nets)"

All Steers & Heifers (Beef Type Cattle)

Purchasing Basis	% Choice	Head	Avg Price	Week Ago Change	Year Ago Change
Dressed	> 65% Choice	266,041	\$228.25	\$2.65 ↑	\$28.90 ↑
	< 65% Choice	37,872	\$217.13	\$1.83 ↑	\$25.99 ↑
	Total all Grades	303,913	\$226.86	\$2.61 ↑	\$28.28 ↑
Live	> 65% Choice	120,123	\$145.88	\$2.19 ↑	\$20.22 ↑
	< 65% Choice	8,025	\$139.74	\$1.38 ↑	\$17.78 ↑
	Total all Grades	128,148	\$145.50	\$2.20 ↑	\$20.17 ↑

Dairy Bred

Purchasing Basis	% Choice	Head	Avg Price	Week Ago Change	Year Ago Change
Dressed	> 65% Choice	15,272	\$220.24	\$4.08 ↑	\$33.25 ↑
	< 65% Choice	1,294	\$206.03	\$2.73 ↑	\$28.56 ↑
	Total all Grades	16,566	\$219.13	\$3.89 ↑	\$32.88 ↑
Live	> 65% Choice	1,999	\$136.65	\$2.13 ↑	\$23.30 ↑
	< 65% Choice	164	\$132.84	\$1.93 ↑	\$29.72 ↑
	Total all Grades	2,163	\$136.36	\$2.17 ↑	\$23.91 ↑

Spread Comparison Values

Beef Type minus Dairy Type

(Weekly Information from 2pm Previous Monday to 10am Current Monday; Includes Negotiated, Formula Nets, Contract Nets, & Grid Nets)

Purchasing Basis	Current	Week Ago Change	Year Ago Change
Dressed	\$7.73 ↑	\$9.01 ↑	\$12.33 ↑
Live	\$9.14 ↑	\$9.11 ↑	\$12.88 ↑

Formula Net minus Negotiated

(Beef Type Cattle; All live transactions converted to a dressed price)

52 Week Rolling Average

\$1.27





National Weekly Fed Cattle Comprehensive

Agricultural Marketing Service
Livestock, Poultry, and Grain Market News

August 23, 2022

Formula Base minus Negotiated

(Beef Type Cattle; All live transactions converted to a dressed price)

52 Week Rolling Average

(\$2.34)



Formula Net minus Formula Base

(Beef Type Cattle; All live transactions converted to a dressed price)

52 Week Rolling Average

\$3.61



Grading % and Carcass Weights

(Beef Type Cattle; Includes Formula Net, Contract Net, and Grid Net; Grading % includes Choice & higher; Carcass Weight includes all grades; All live transactions converted to a dressed basis)

Grading %

79.9

Week Ago

80.3



Dressed Weight

874.6

Week Ago

866.0



Daily Formula Base Volume

Tue Aug 16

56,573

Wed Aug 17

30,878

Thu Aug 18

34,698

Fri Aug 19

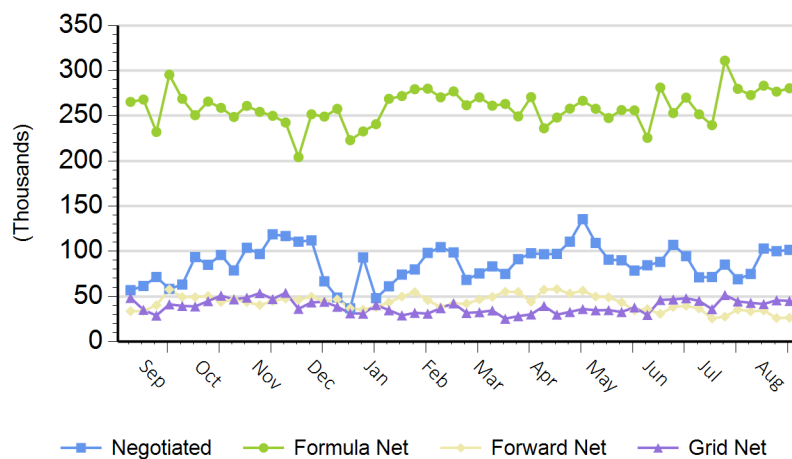
27,982

Mon Aug 22

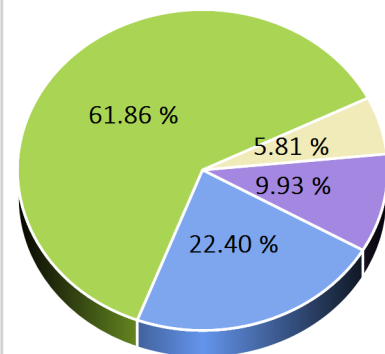
154,989

Purchasing Basis Volume

Weekly Purchasing Basis



Previous Week





National Weekly Fed Cattle Comprehensive

Agricultural Marketing Service
Livestock, Poultry, and Grain Market News

August 23, 2022

Weekly Negotiated Avg. Price by Delivery Period

(Beef Type Cattle: All live transactions converted to dressed price)

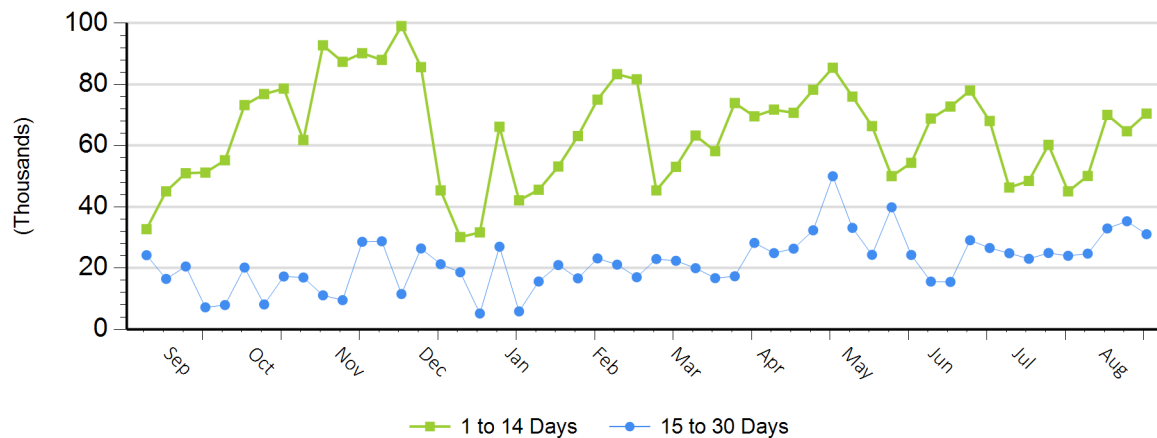
Avg Price (1 to 14 Days)

\$231.60

Avg Price (15 to 30 Days)

\$234.60

Weekly Negotiated Head Count by Delivery Period



For more Information about this report, please visit this link: [National Weekly Fed Cattle Comprehensive Overview](#)