



National Weekly Fed Cattle Comprehensive

Agricultural Marketing Service

Livestock, Poultry, and Grain Market News

August 09, 2022

Weighted Average Prices

(Weekly Information from 2pm Previous Monday to 10am Current Monday; Includes Negotiated, Formula Nets, Contract Nets, & Grid Nets)"

All Steers & Heifers (Beef Type Cattle)

Purchasing Basis	% Choice	Head	Avg Price	Week Ago Change	Year Ago Change
Dressed	> 65% Choice	264,233	\$225.60	(\$1.42) ↓	\$28.83 ↑
	< 65% Choice	43,298	\$213.27	(\$2.38) ↓	\$25.00 ↑
	Total all Grades	307,531	\$223.86	(\$1.73) ↓	\$27.87 ↑
Live	> 65% Choice	123,561	\$141.59	(\$0.19) ↓	\$17.50 ↑
	< 65% Choice	7,774	\$138.09	(\$1.39) ↓	\$17.42 ↑
	Total all Grades	131,335	\$141.38	(\$0.21) ↓	\$17.68 ↑

Dairy Bred

Purchasing Basis	% Choice	Head	Avg Price	Week Ago Change	Year Ago Change
Dressed	> 65% Choice	17,155	\$217.17	(\$0.28) ↓	\$31.69 ↑
	< 65% Choice	1,236	\$204.19	\$0.95 ↑	\$26.77 ↑
	Total all Grades	18,391	\$216.30	(\$0.50) ↓	\$31.69 ↑
Live	> 65% Choice	1,582	\$131.82	(\$0.76) ↓	\$20.70 ↑
	< 65% Choice	102	\$126.58	(\$7.22) ↓	\$24.41 ↑
	Total all Grades	1,684	\$131.50	(\$1.27) ↓	\$21.37 ↑

Spread Comparison Values

Beef Type minus Dairy Type

(Weekly Information from 2pm Previous Monday to 10am Current Monday; Includes Negotiated, Formula Nets, Contract Nets, & Grid Nets)

Purchasing Basis	Current	Week Ago Change	Year Ago Change
Dressed	\$7.56 ↑	\$8.79 ↑	\$11.38 ↑
Live	\$9.88 ↑	\$8.82 ↑	\$13.57 ↑

Formula Net minus Negotiated

(Beef Type Cattle; All live transactions converted to a dressed price)

52 Week Rolling Average

\$1.49





National Weekly Fed Cattle Comprehensive

Agricultural Marketing Service
Livestock, Poultry, and Grain Market News

August 09, 2022

Formula Base minus Negotiated

(Beef Type Cattle; All live transactions converted to a dressed price)

52 Week Rolling Average

(\$2.15)



Formula Net minus Formula Base

(Beef Type Cattle; All live transactions converted to a dressed price)

52 Week Rolling Average

\$3.64



Grading % and Carcass Weights

(Beef Type Cattle; Includes Formula Net, Contract Net, and Grid Net; Grading % includes Choice & higher; Carcass Weight includes all grades; All live transactions converted to a dressed basis)

Grading %

79.6

Week Ago

80.1



Dressed Weight

869.3

Week Ago

867.1



Daily Formula Base Volume

Tue Aug 02

30,354

Wed Aug 03

27,924

Thu Aug 04

36,111

Fri Aug 05

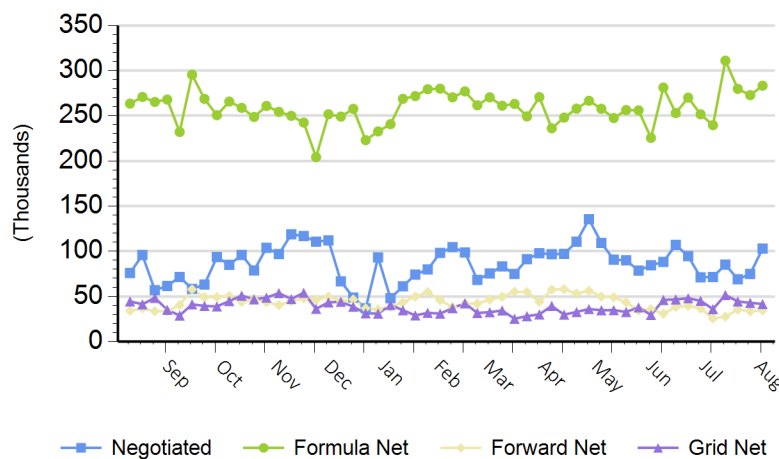
29,613

Mon Aug 08

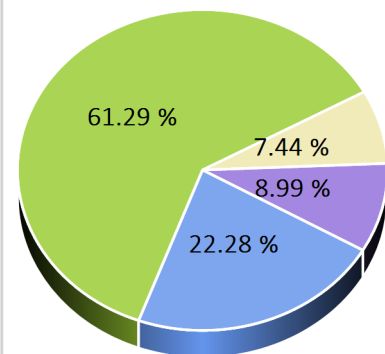
152,541

Purchasing Basis Volume

Weekly Purchasing Basis



Previous Week





National Weekly Fed Cattle Comprehensive

Agricultural Marketing Service
Livestock, Poultry, and Grain Market News

August 09, 2022

Weekly Negotiated Avg. Price by Delivery Period

(Beef Type Cattle: All live transactions converted to dressed price)

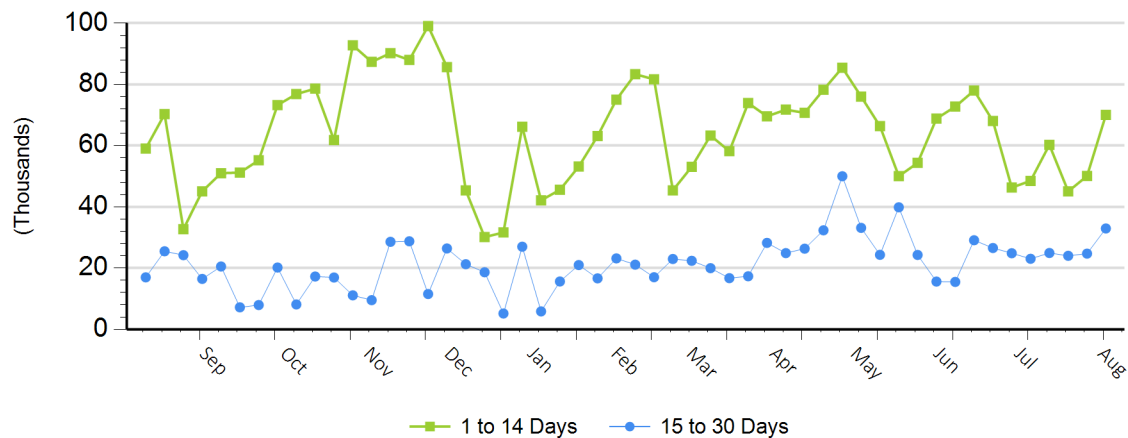
Avg Price (1 to 14 Days)

\$223.12

Avg Price (15 to 30 Days)

\$228.18

Weekly Negotiated Head Count by Delivery Period



For more Information about this report, please visit this link: [National Weekly Fed Cattle Comprehensive Overview](#)