



National Weekly Fed Cattle Comprehensive

Agricultural Marketing Service

Livestock, Poultry, and Grain Market News

July 26, 2022

Weighted Average Prices

(Weekly Information from 2pm Previous Monday to 10am Current Monday; Includes Negotiated, Formula Nets, Contract Nets, & Grid Nets)"

All Steers & Heifers (Beef Type Cattle)

Purchasing Basis	% Choice	Head	Avg Price	Week Ago Change	Year Ago Change
Dressed	> 65% Choice	267,635	\$229.20	(\$0.77) ↓	\$30.67 ↑
	< 65% Choice	34,565	\$217.16	\$0.24 ↑	\$28.32 ↑
	Total all Grades	302,200	\$227.83	(\$0.57) ↓	\$30.35 ↑
Live	> 65% Choice	93,737	\$142.63	(\$0.66) ↓	\$19.78 ↑
	< 65% Choice	8,306	\$137.93	(\$2.27) ↓	\$17.48 ↑
	Total all Grades	102,043	\$142.25	(\$0.80) ↓	\$19.68 ↑

Dairy Bred

Purchasing Basis	% Choice	Head	Avg Price	Week Ago Change	Year Ago Change
Dressed	> 65% Choice	17,590	\$220.14	(\$0.24) ↓	\$34.42 ↑
	< 65% Choice	987	\$202.24	(\$5.35) ↓	\$29.35 ↑
	Total all Grades	18,577	\$219.19	\$0.10 ↑	\$34.17 ↑
Live	> 65% Choice	2,977	\$131.42	(\$2.39) ↓	\$18.82 ↑
	< 65% Choice	172	\$130.80	(\$0.16) ↓	\$7.80 ↑
	Total all Grades	3,149	\$131.39	(\$2.12) ↓	\$18.13 ↑

Spread Comparison Values

Beef Type minus Dairy Type

(Weekly Information from 2pm Previous Monday to 10am Current Monday; Includes Negotiated, Formula Nets, Contract Nets, & Grid Nets)

Purchasing Basis	Current	Week Ago Change	Year Ago Change
Dressed	\$8.64 ↑	\$9.31 ↑	\$12.46 ↑
Live	\$10.86 ↑	\$9.54 ↑	\$9.31 ↑

Formula Net minus Negotiated

(Beef Type Cattle; All live transactions converted to a dressed price)

52 Week Rolling Average

\$1.46





National Weekly Fed Cattle Comprehensive

Agricultural Marketing Service
Livestock, Poultry, and Grain Market News

July 26, 2022

Formula Base minus Negotiated

(Beef Type Cattle; All live transactions converted to a dressed price)

52 Week Rolling Average

(\$2.11)



Formula Net minus Formula Base

(Beef Type Cattle; All live transactions converted to a dressed price)

52 Week Rolling Average

\$3.57



Grading % and Carcass Weights

(Beef Type Cattle; Includes Formula Net, Contract Net, and Grid Net; Grading % includes Choice & higher; Carcass Weight includes all grades; All live transactions converted to a dressed basis)

Grading %

81.0

Week Ago

80.7



Dressed Weight

864.6

Week Ago

863.1



Daily Formula Base Volume

Tue Jul 19

51,647

Wed Jul 20

25,012

Thu Jul 21

38,795

Fri Jul 22

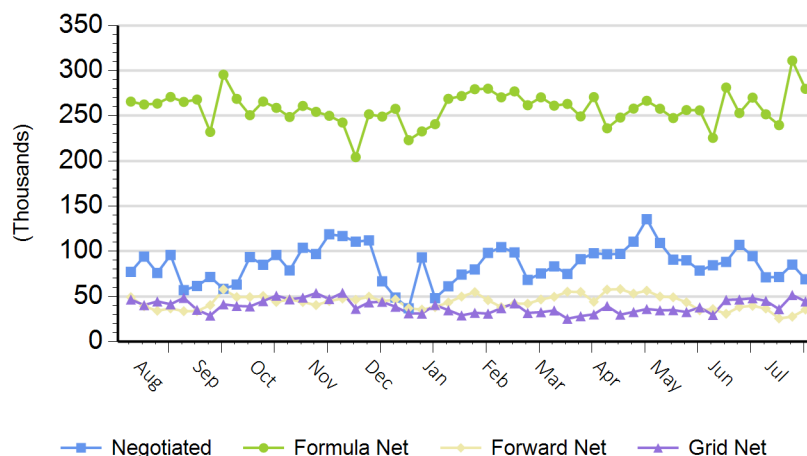
26,157

Mon Jul 25

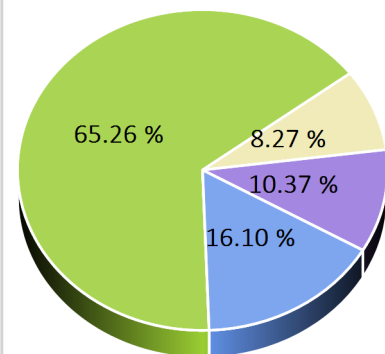
152,192

Purchasing Basis Volume

Weekly Purchasing Basis



Previous Week





National Weekly Fed Cattle Comprehensive

Agricultural Marketing Service
Livestock, Poultry, and Grain Market News

July 26, 2022

Weekly Negotiated Avg. Price by Delivery Period

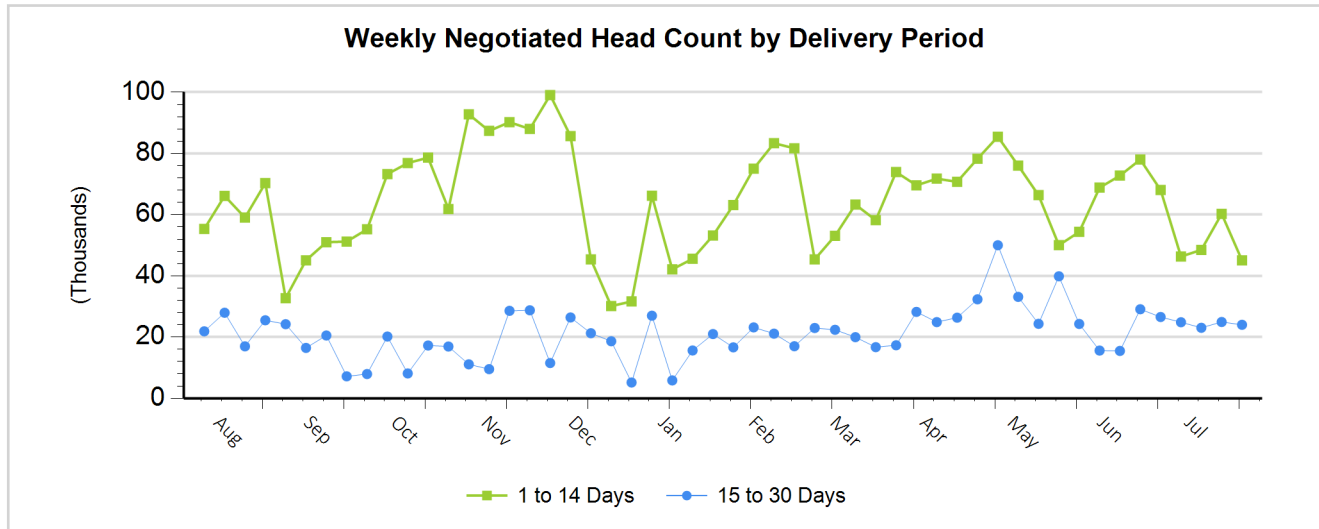
(Beef Type Cattle: All live transactions converted to dressed price)

Avg Price (1 to 14 Days)

\$222.33

Avg Price (15 to 30 Days)

\$225.73



For more Information about this report, please visit this link: [National Weekly Fed Cattle Comprehensive Overview](#)